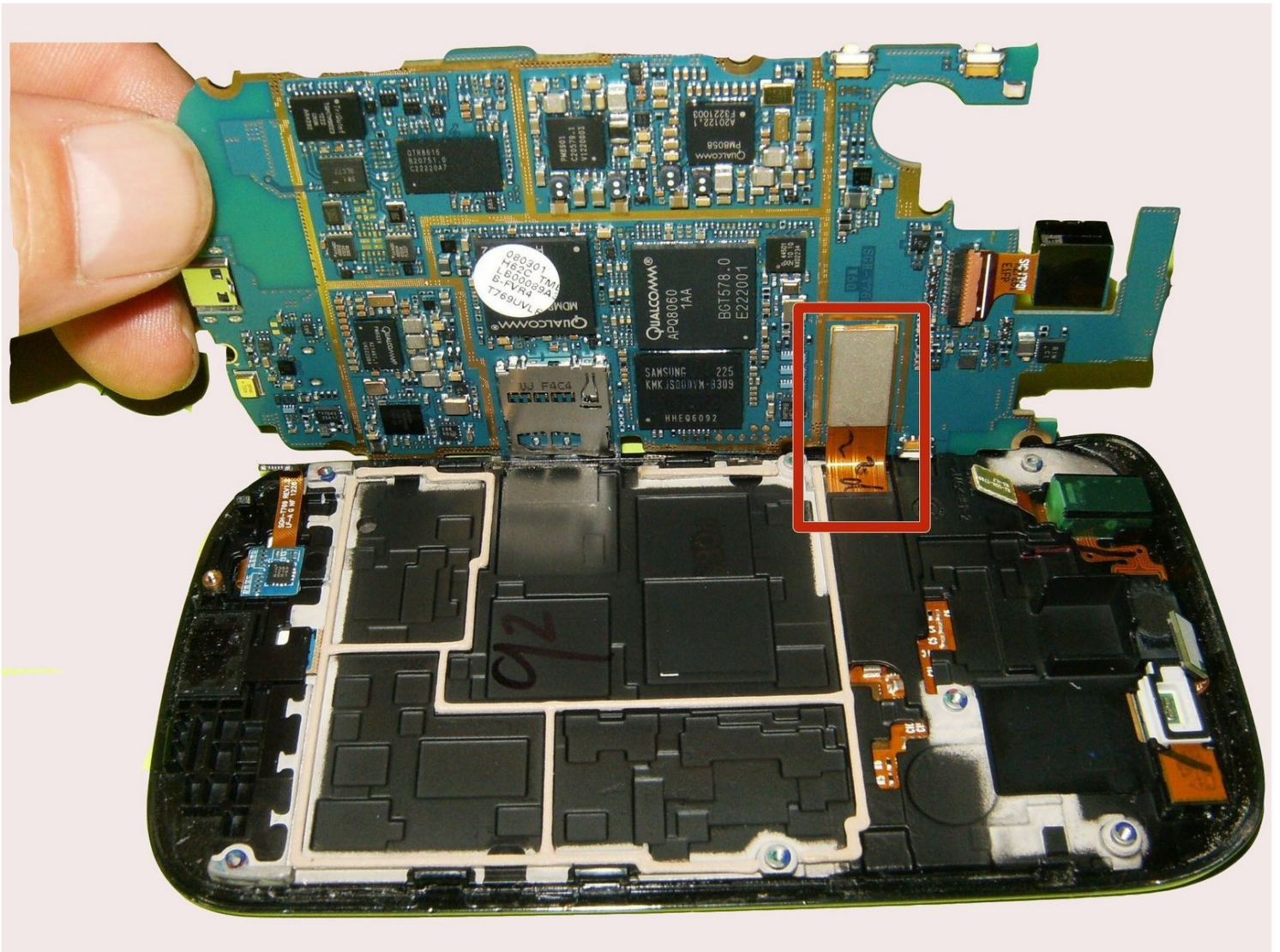




Samsung Galaxy S Blaze Display Assembly Replacement

Is the screen on your Samsung Galaxy S Blaze...

Written By: Dustin



INTRODUCTION

Is the screen on your Samsung Galaxy S Blaze not responding to your touch? First things first, have you checked if the phone is charged? If so and it still does not turn on then it could be the charger, port or battery. After determining that it is none of those then the next place to look at is the display assembly itself. This guide will take you through step-by-step how to replace the display assembly on your Samsung Galaxy S Blaze.

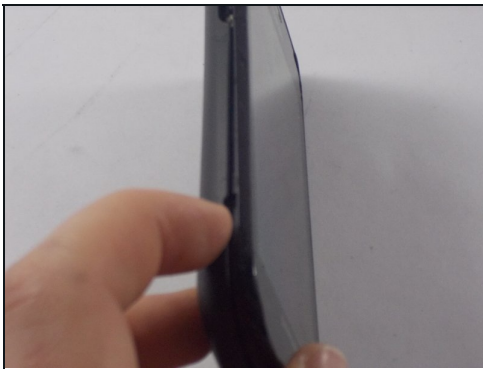
TOOLS:

[Phillips #00 Screwdriver](#) (1)

PARTS:

[Samsung Galaxy S Blaze Screen Housing](#) (1)

Step 1 — Power Button



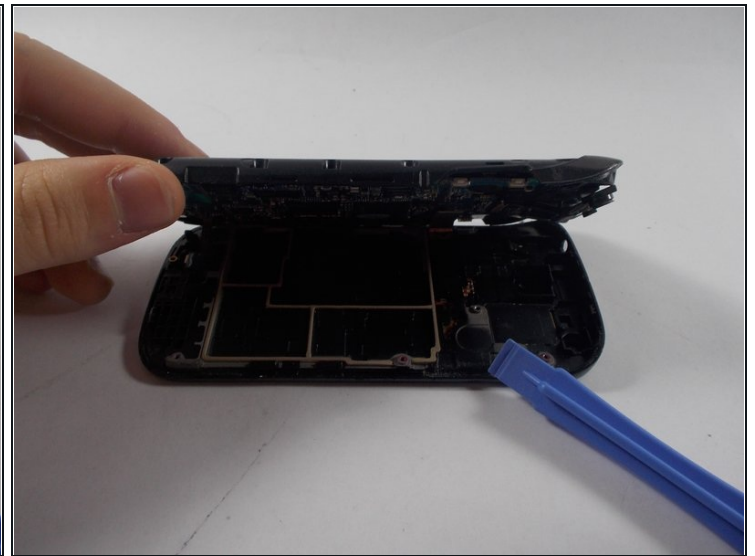
- Start by removing the back plastic cover by lifting it up from the notch on the left side of the phone

Step 2



- Remove the battery and use a small Phillips head screwdriver to remove the marked up screws

Step 3



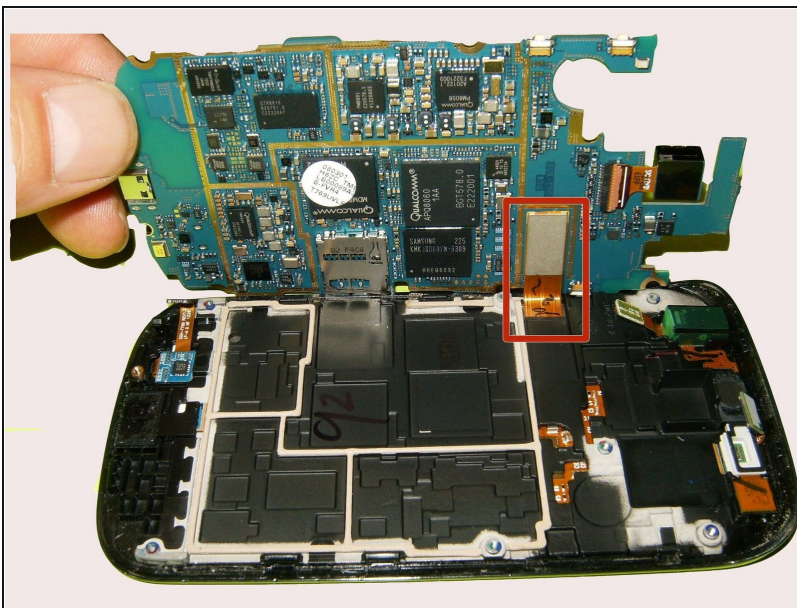
- Use a flat tool to pry the two plastic cases apart
- The latches are very strong, so don't be afraid to use force

Step 4



- Locate the missing button slot
- Place in replacement button, and close the plastic housing around it
- The button should be fully functional now, repeat past steps to reassemble the phone

Step 5 — Display Assembly



- Gently remove the 2 ribbon cables as shown.
- Connect the new screen to the main motherboard just the same way it was connected before.

⚠ Be careful not to crimp or bend the ribbon cables, as this will ruin the replacement.

To reassemble your device, follow these instructions in reverse order.