



# Kurio 7 Back Panel Replacement

This guide will show you how to replace a broken back panel on your Kurio 7.

Written By: Eric Rice



## INTRODUCTION

If the back panel of your Kurio 7 is broken, this is an easy process to replace it. This also serves as a guide to opening the device for other repairs and replacements.



### TOOLS:

- [Phillips #00 Screwdriver](#) (1)
- [iFixit Opening Tools](#) (1)



### PARTS:

- [Kurio 7 Replacement Back Panel](#) (1)

## Step 1 — Back Panel



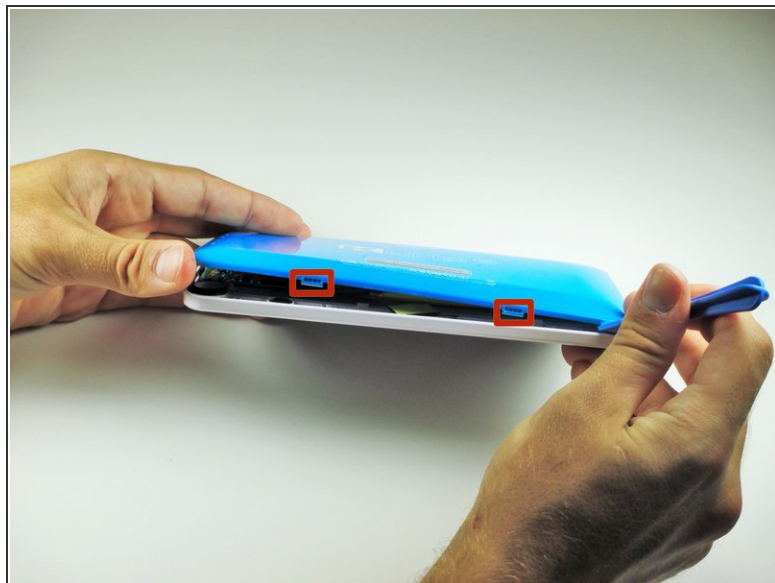
- Begin by removing the rubber cover from the Kurio 7.

## Step 2



- Remove the four 30 mm Phillips #00 screws from the outer case.

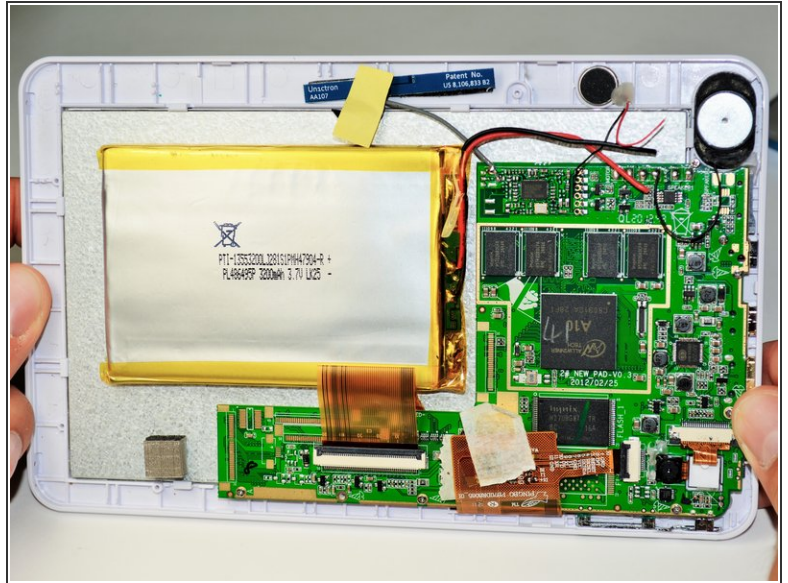
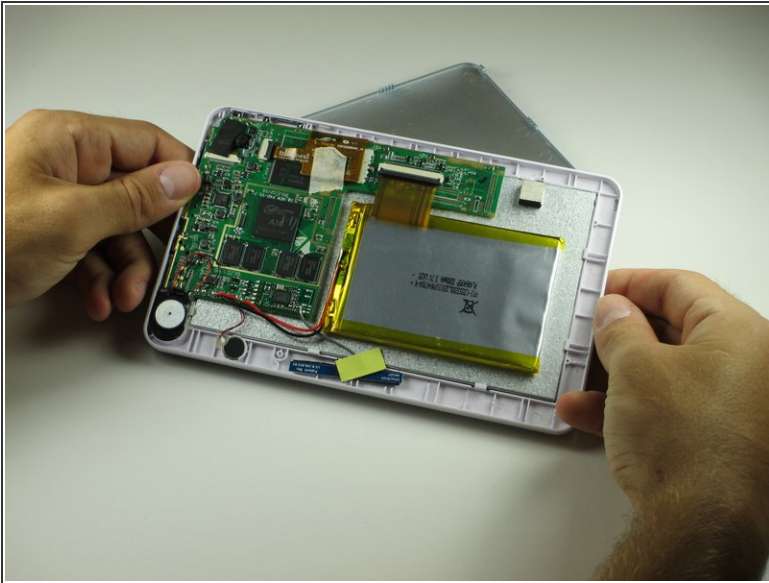
### Step 3



- Insert the plastic opening tool in the gap between the front cover and the back cover of the device.
  - Slide the plastic opening tool around the edge of the device. Gently pry apart the tabs that hold the front cover and the back cover together.
- ⚠ Be careful not to break off the tabs that hold the front cover and the back cover together.



## Step 4



- Once all of the tabs are removed, the back cover should come off easily.
- ⚠ Gently remove the back cover. There are wires inside that may get caught on the cover while removing it. These wires are soldered to their components and are difficult to reattach.

Replace with a new back panel. To reassemble your device, follow these instructions in reverse order.