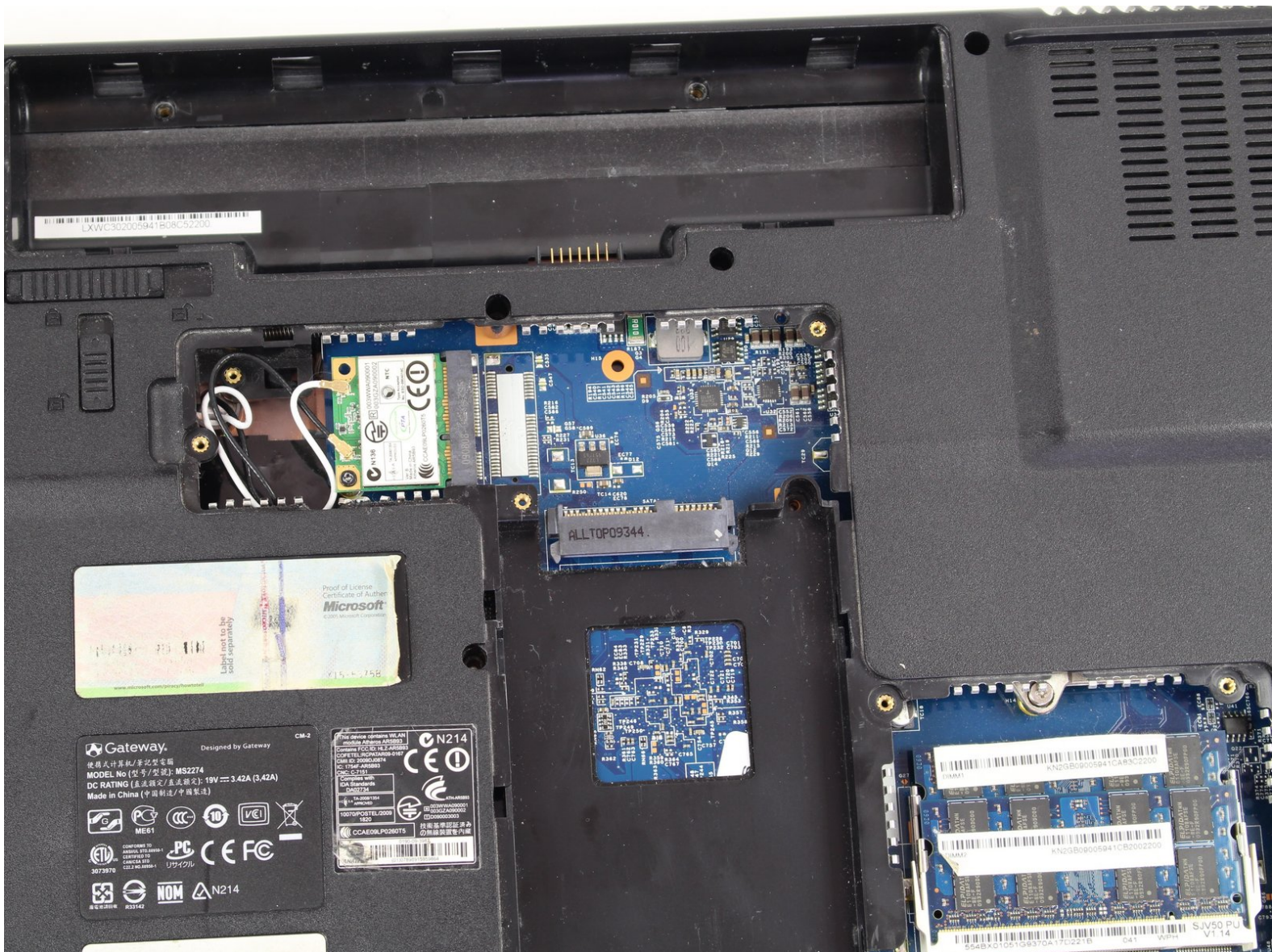




# Gateway NV52 WiFi Card Replacement

Use this guide to replace a WiFi card on a Gateway NV52.

Written By: Ruben



---

## INTRODUCTION

The only prerequisite for the WiFi card is the Base Cover.



### TOOLS:

- [Phillips #0 Screwdriver](#) (1)
-

## Step 1 — Base Cover



- Remove the five identical 3/16" Phillips screws that secures the hard drive and memory cover using a Phillips #0 Screwdriver.

## Step 2



- Lift up the base cover from the the top with your hands to a 90 degree angle.
- Remove the base cover and place it in a safe and dry place.



## Step 3 — WiFi Card



- Remove the 3/16" screw located at the bottom left corner of the WiFi card using a Phillips #0 Screwdriver.

## Step 4



- Locate the black and white cables attached to the WiFi card.
- Gently wiggle the black cable until it detaches from the WiFi card.
- Repeat the previous step for the white cable.

## Step 5



- Gently, remove the Wifi card from its slot, and place it in a dry and safe place.

To reassemble your device, follow these instructions in reverse order.