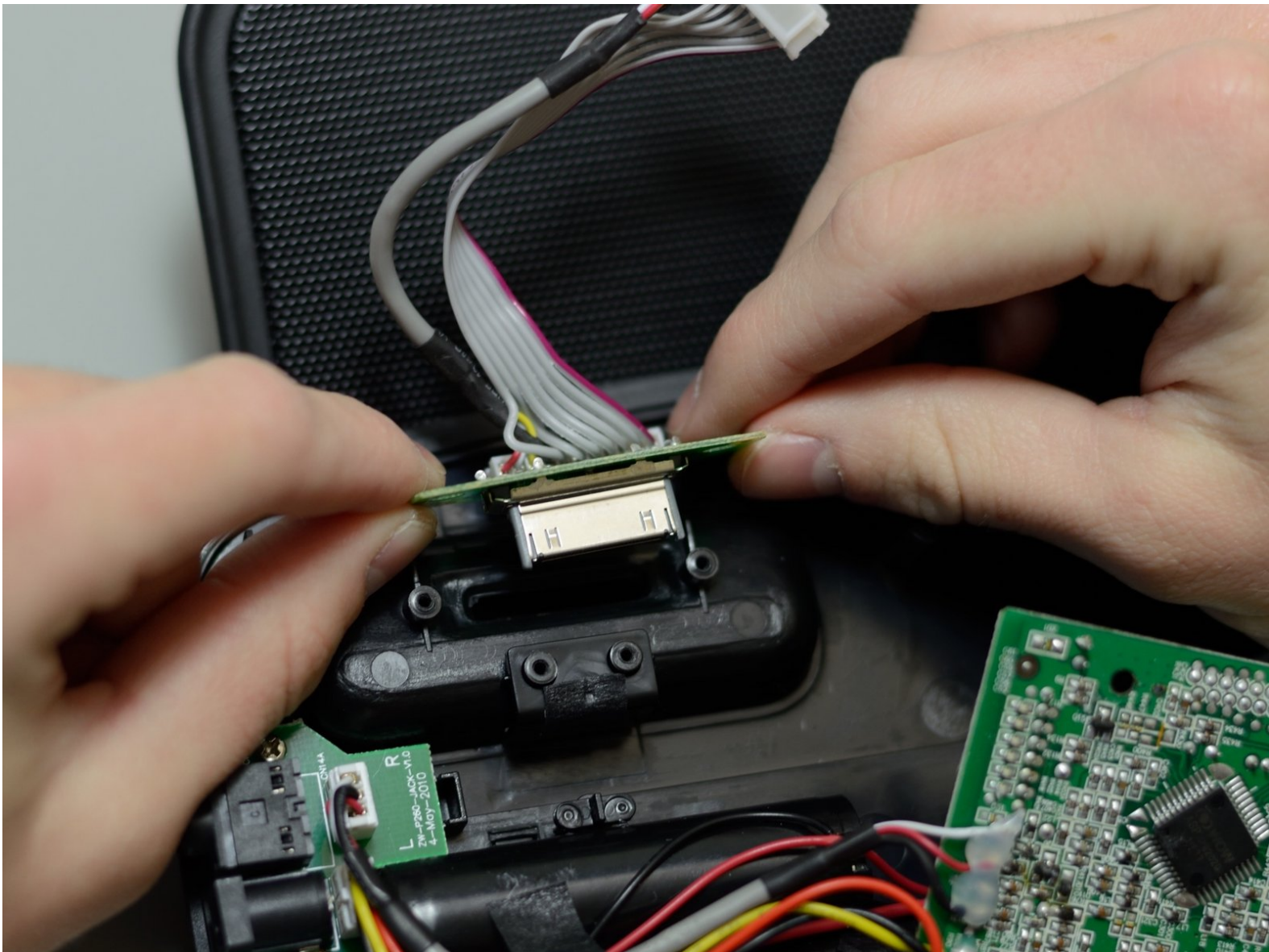




# Internal Audio Adapter Jack Replacement

This guide shows you how to replace the internal audio adapter jack of the iHome iP37.

Written By: Jerrell



## INTRODUCTION

This guide details how to replace iHome iP37's internal audio adapter jack, which connects your music device to the iHome. Replacing the part doesn't take long.

---

### TOOLS:

- [Phillips #2 Screwdriver](#) (1)
  - [Phillips #1 Screwdriver](#) (1)
-

## Step 1 — Exterior Housing



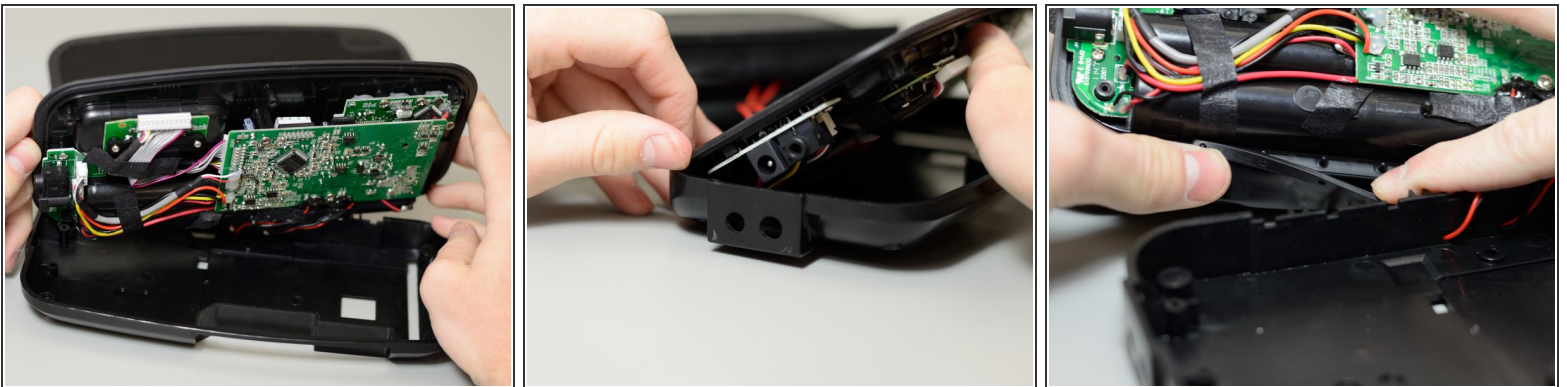
- Pry the exterior housing off the iHome iP37. You may need extra leverage to do this.
- ⓘ Note: This step is the most difficult due to the way it is attached. The glue holding the exterior housing to the internals does not break easily. You may want to use iFixit's [iOpener](#) to soften the glue.
- ⓘ Note: The process is the same for both the upper half and the lower half. To identify the halves, look for these details: the upper half has a metal grid, and the lower half has buttons. If you are replacing any other components, pry off the lower half.



## Step 2 — Lower Half Casing



- Remove these four 9 mm screws from the plastic casing; you will need a Phillips #2 driver to do this.
- Remove the flanged 9 mm screw from the counterweight; you will need a Phillips #2 driver to do this.
- Lift and remove the counterweight.

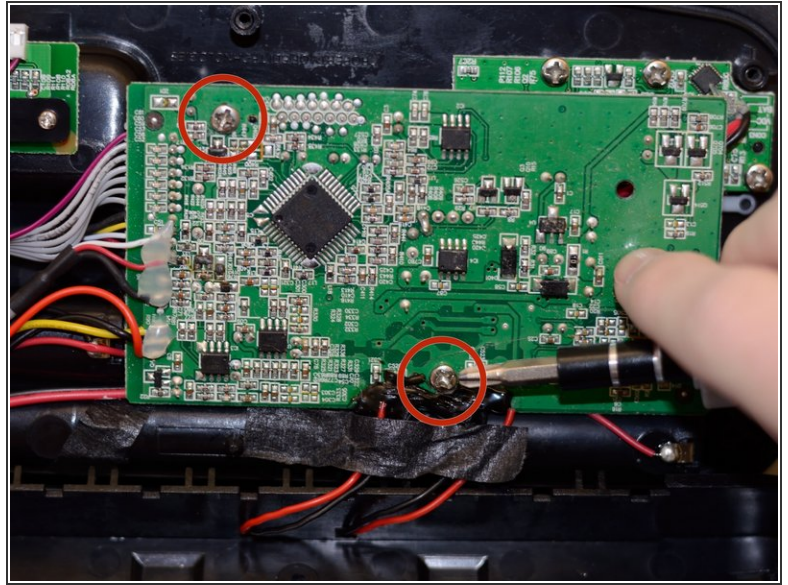
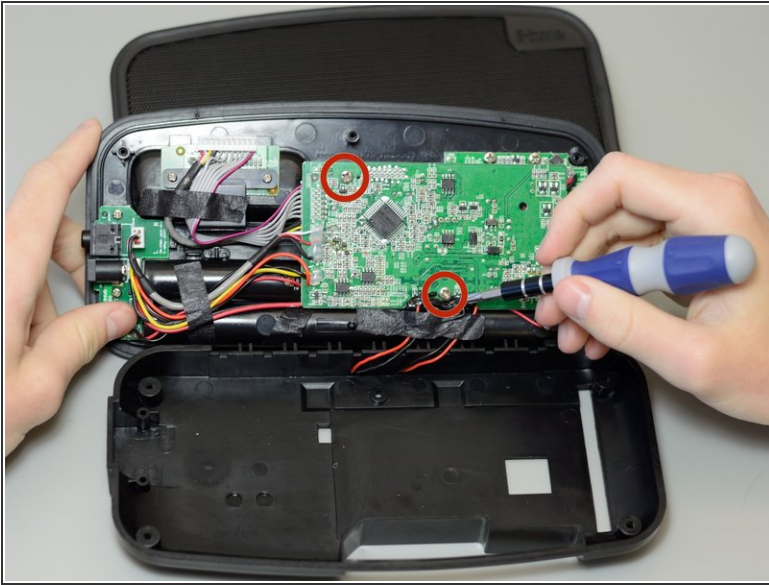
## Step 3



- Lift and remove the plastic casing.
-  **Note:** It is best to lift the casing starting from the side without the protruding 3.5mm audio port and power port.
-  **Reminder:** During this process, a rubber cover will likely be dislodged. Make sure to re-seat this cover on the small pegs before putting the plastic casing back on.

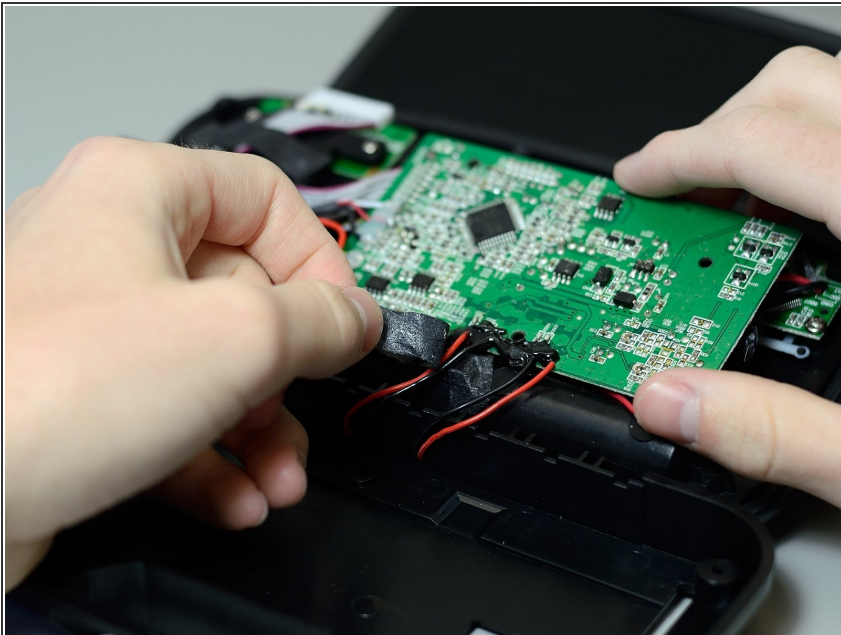


## Step 4 — Preliminary Main Board



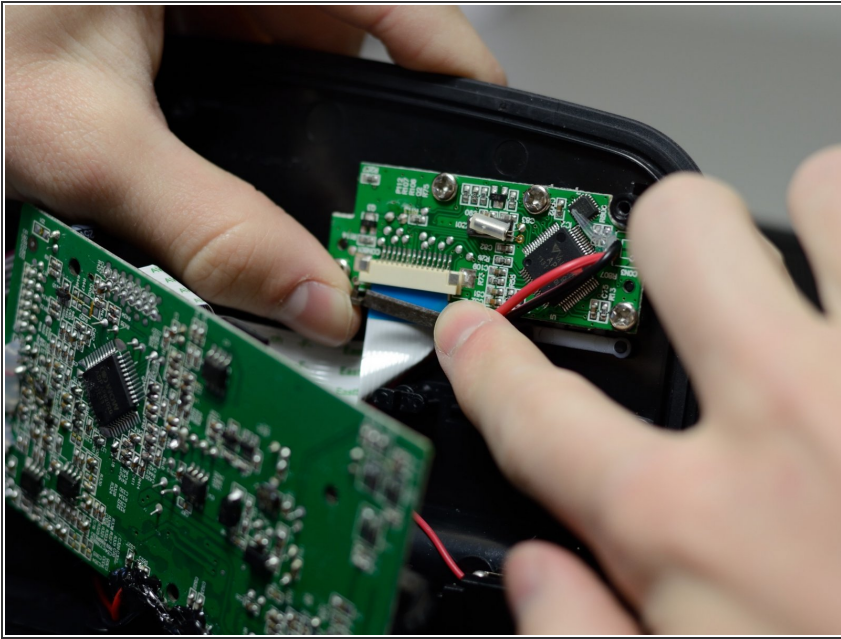
- Remove the two 9 mm screws that hold the main printed circuit board onto the rest of the iP37; you will need a Phillips #2 driver to do this.

## Step 5



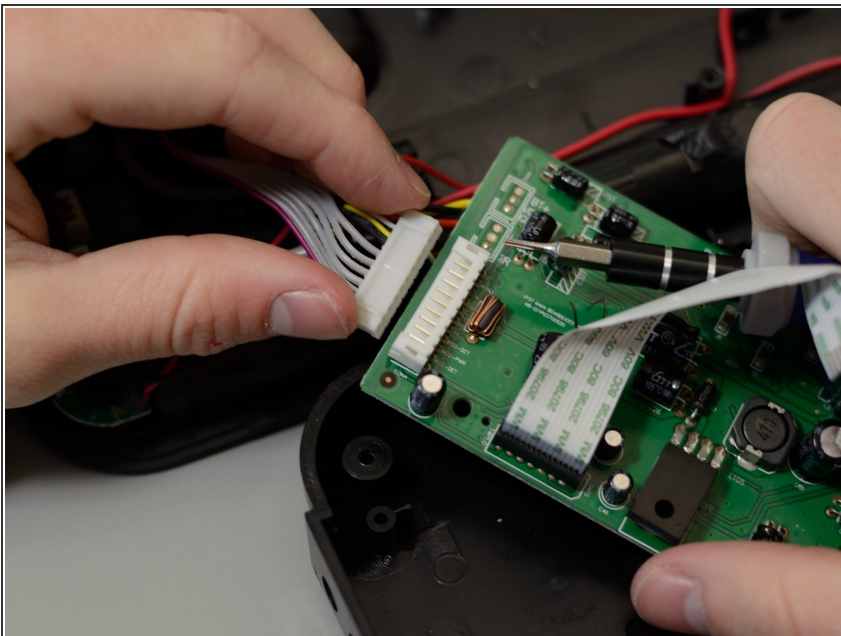
- Peel away the black tape covering the red wires that connect to the PCB.

## Step 6



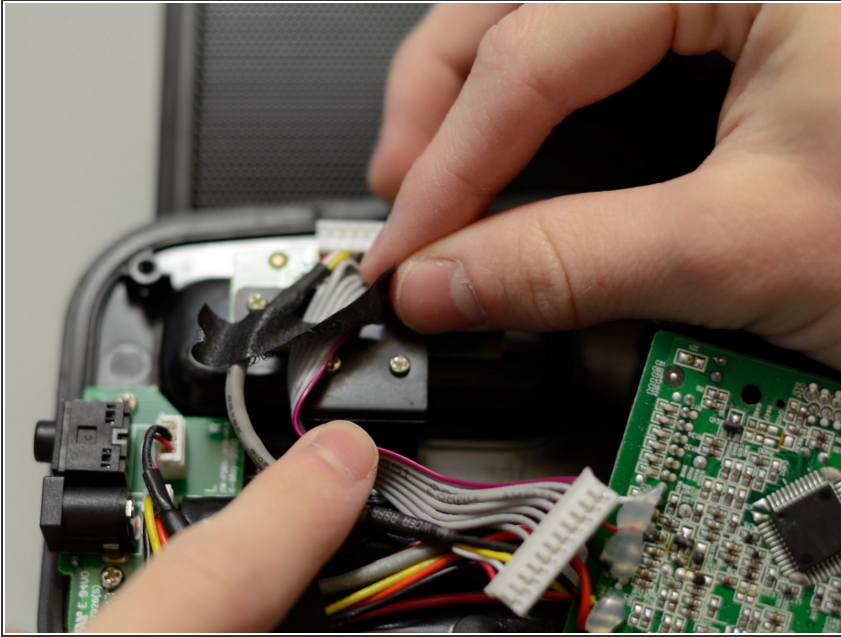
- ⚠ There is ribbon wiring under this PCB. Be careful not to damage it while removing the PCB.
- Slowly lift the PCB away from the rest of the device
- Remove the ribbon by first removing the brown insert piece from the connector on the button board
- Pull the ribbon out of the connector on the button board by the blue tab.

## Step 7



- Carefully disconnect the white 11-pin connector from the main board.
- ⓘ Pull firmly on the connector and use a screwdriver to pry it slightly if necessary.

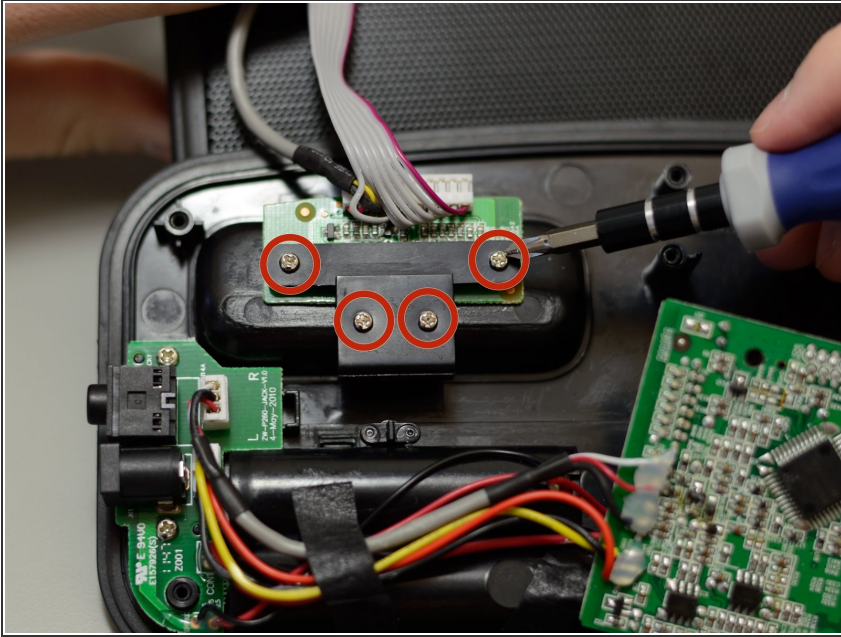
## Step 8 — Internal Audio Adapter Jack



- A strip of black tape covers the grey and purple wire cluster that connects to the internal audio printed circuit board. Carefully peel this tape away.

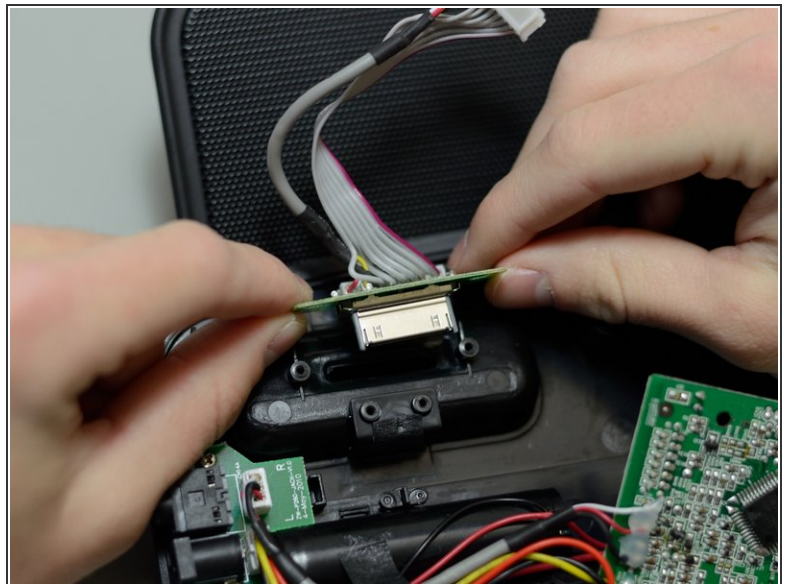
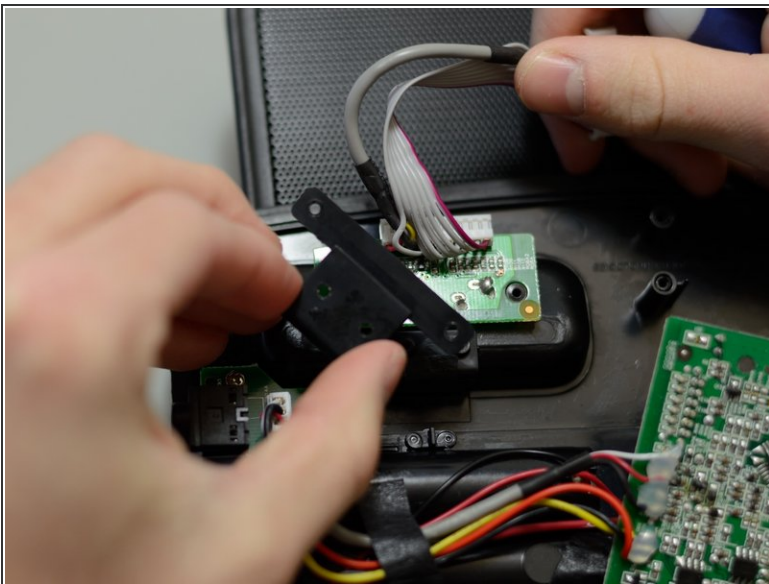


## Step 9



- Remove the four 7 mm screws that hold the PCB in place; you will need a Phillips #1 driver to do this. You may need to move some wires out of the way to access one of these screws.

## Step 10



- Carefully lift and remove the black plastic bracket.
- Lift the PCB away from the rest of the device.



To reassemble your device, follow these instructions in reverse order.