



PlayStation 4 Optical Drive Replacement

Follow this guide to replace the optical drive...

Written By: Sam Omiotek



INTRODUCTION

Follow this guide to replace the optical drive on your Sony Playstation 4.

On 1XXX series models of the PS4, the optical drive daughterboard and the motherboard are paired. If your daughterboard's broken, you'll have to replace the motherboard.

You can replace the the optical drive assembly by itself, but the replacement assembly must be compatible with the your optical drive daughterboard.

Unplug your PS4 before beginning any repairs.



TOOLS:

- [Tweezers](#) (1)
- [TR8 Torx Security Screwdriver](#) (1)
- [Phillips #0 Screwdriver](#) (1)
- [Spudger](#) (1)



PARTS:

- [PlayStation 4 SAA-001 Motherboard and Paired Optical Drive](#) (1)
- [Playstation 4 SAB-001 Motherboard and Paired Optical Drive](#) (1)
- [PlayStation 4 SAC-001 Motherboard and Paired Optical Drive](#) (1)

Step 1 — Flip over the PS4



- Flip the PS4 upside-down with the back side facing towards you.

Step 2 — Remove the warranty stickers



- Use tweezers to remove the two stickers in the center of the back of the PS4 exposing two case screws.

Step 3 — Remove the plastic screw covers



- Use tweezers to carefully remove the plastic screw covers in each corner, exposing two more case screws.

Step 4 — Remove the rear case screws



- Remove the four 7.2 mm Torx security screws on the back of the PS4.

Step 5 — Remove the lower case



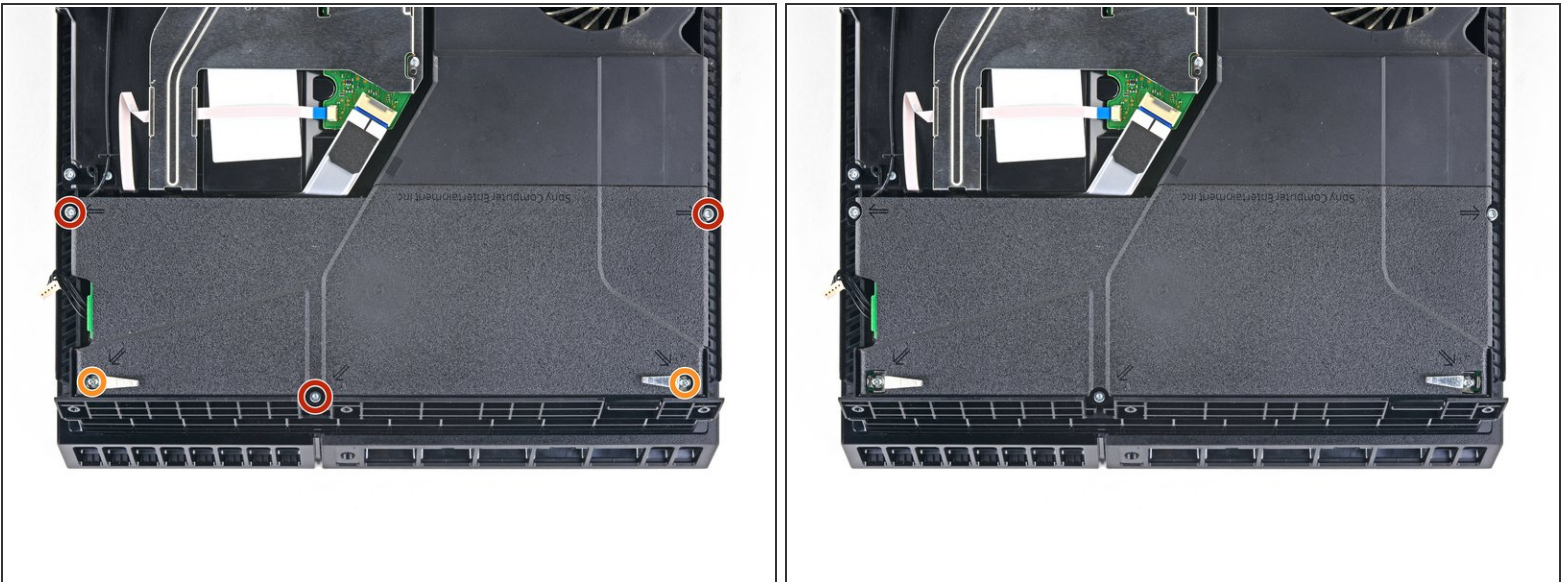
- Use your thumbs to lift the lower case up and off the PS4.
- ⓘ The lower case is held into place by plastic clips. You may need to use significant force to release the lower case.

Step 6



- Use a pair of tweezers to pull the power supply cable straight out and disconnect the power supply unit from the motherboard.
- ⓘ If your connector feels stuck, use a spudger to gently pry the connector out.

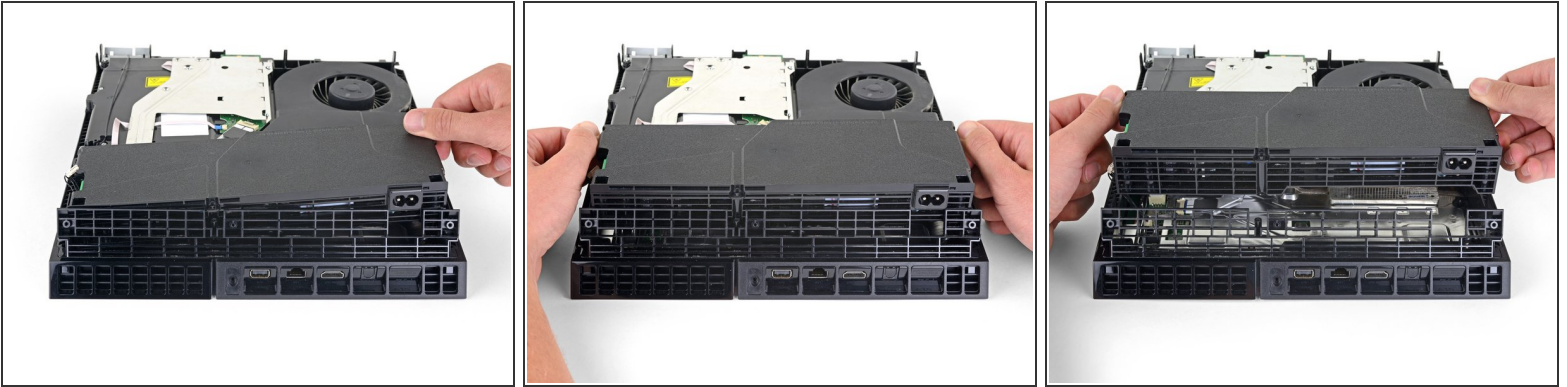
Step 7 — Remove the power supply unit



- Remove three 9.7 mm Torx security screws.
- Remove two 41 mm Phillips screws and brackets.

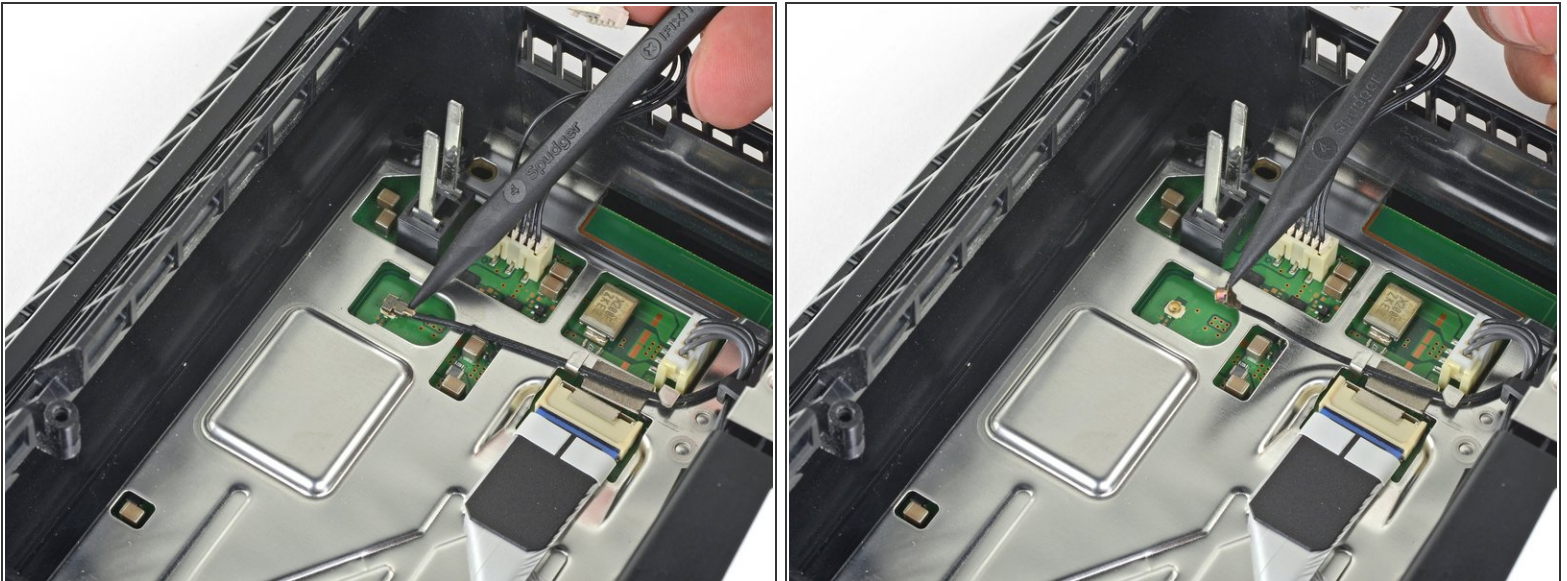
This document was generated on 2023-03-08 03:04:45 PM (MST).

Step 8



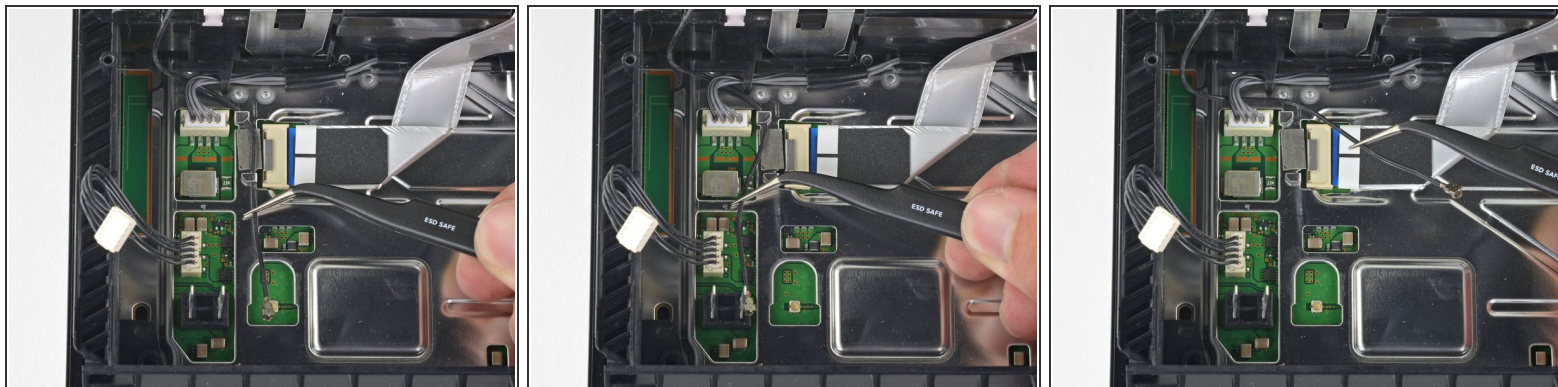
- Lift the power supply straight up and out of the PS4.
- ⓘ The power supply is held firmly in place by prongs on the left side. It may take multiple attempts to remove it.
- ☑ During reassembly, ensure the prongs are aligned, then press the power supply into place.

Step 9 — Remove the Wi-Fi antenna



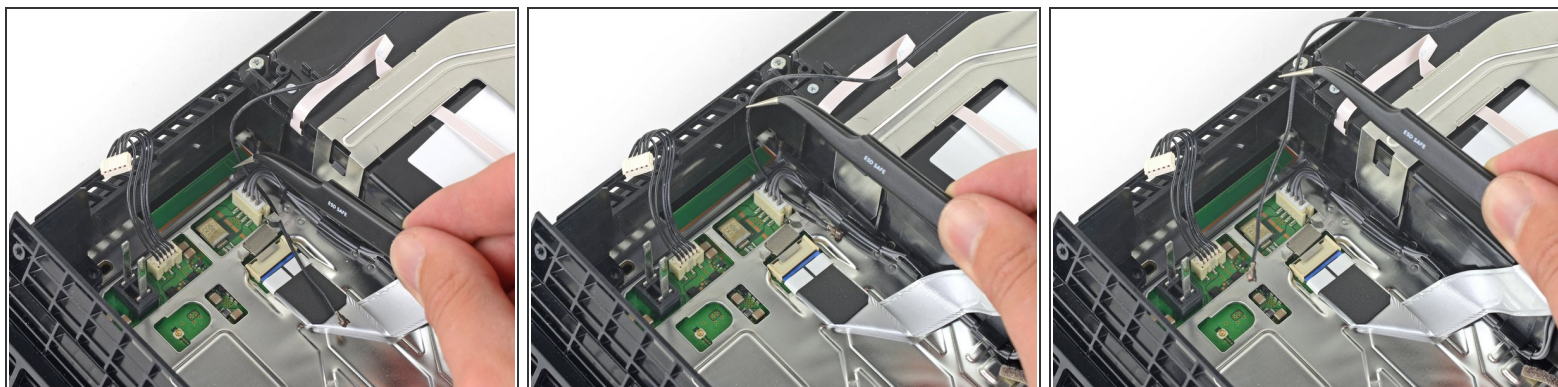
- Use the tip of a spudger to disconnect the antenna cable from the motherboard.

Step 10



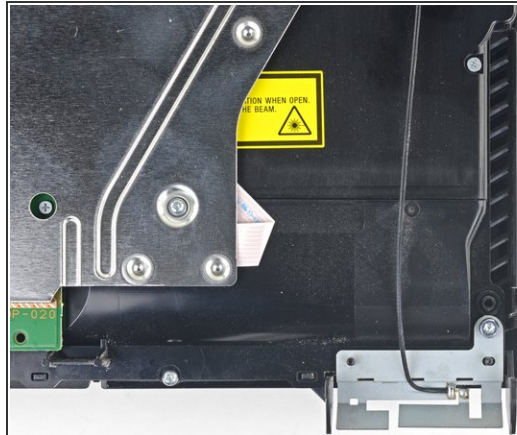
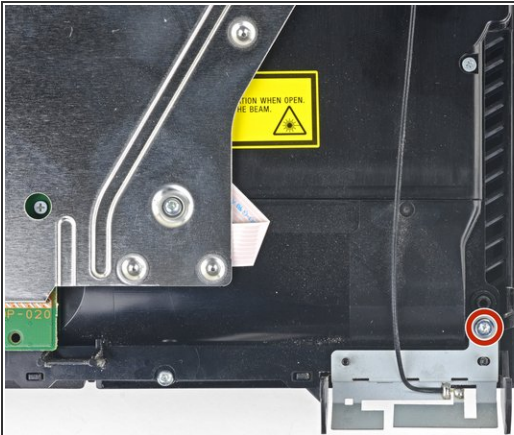
- Use a pair of tweezers or your fingers to grab the antenna cable and move it out from the cable guides.

Step 11



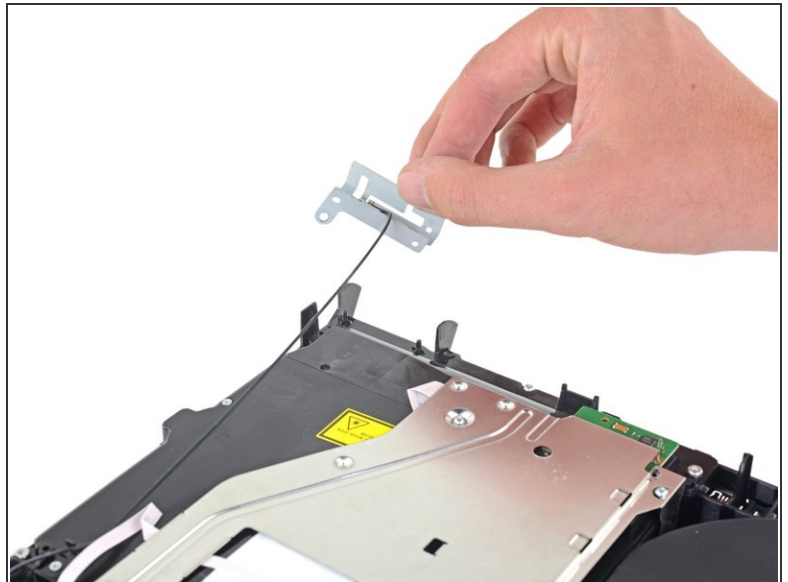
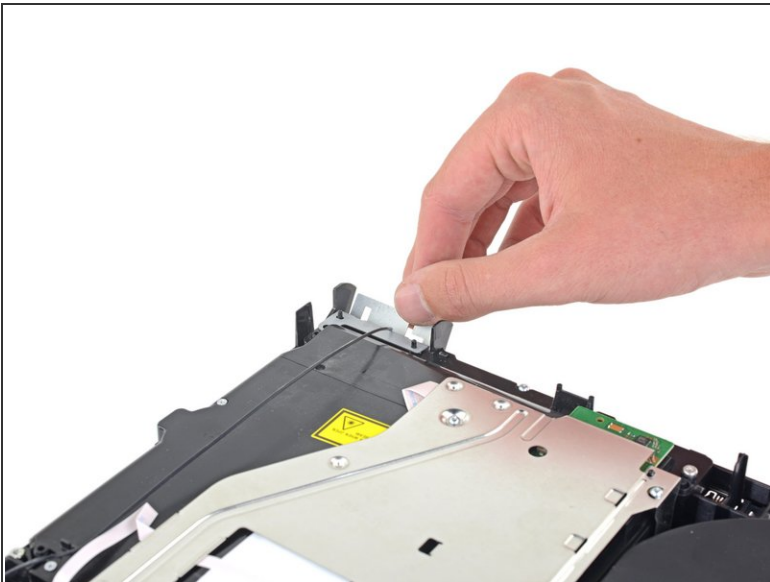
- Use a pair of tweezers or your fingers to thread the antenna cable out from underneath the optical drive cable.

Step 12



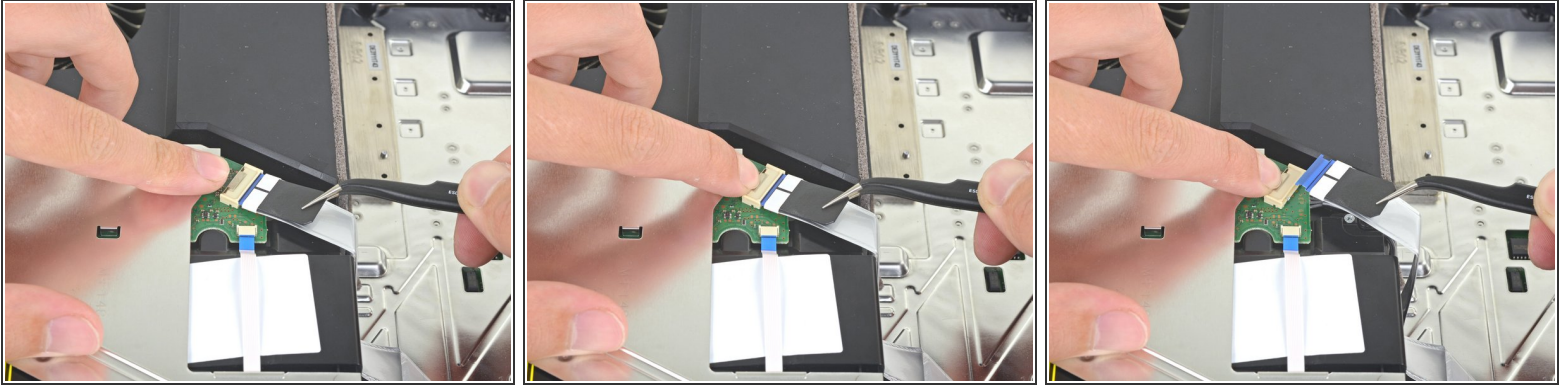
- Remove the 9.7 mm Torx security screw securing the antenna.

Step 13



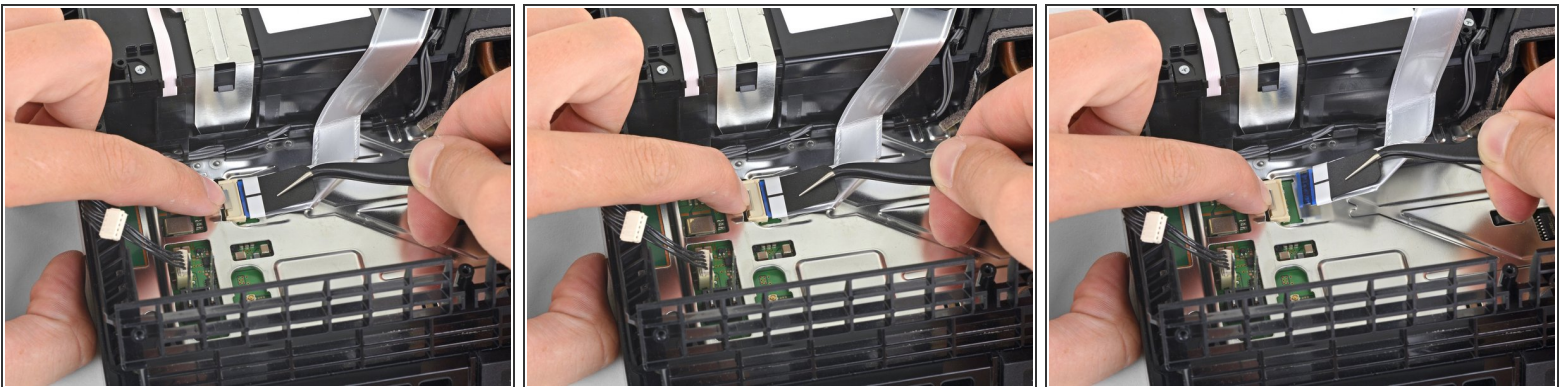
- Remove the Wi-Fi antenna.

Step 14 — Disconnect the optical drive



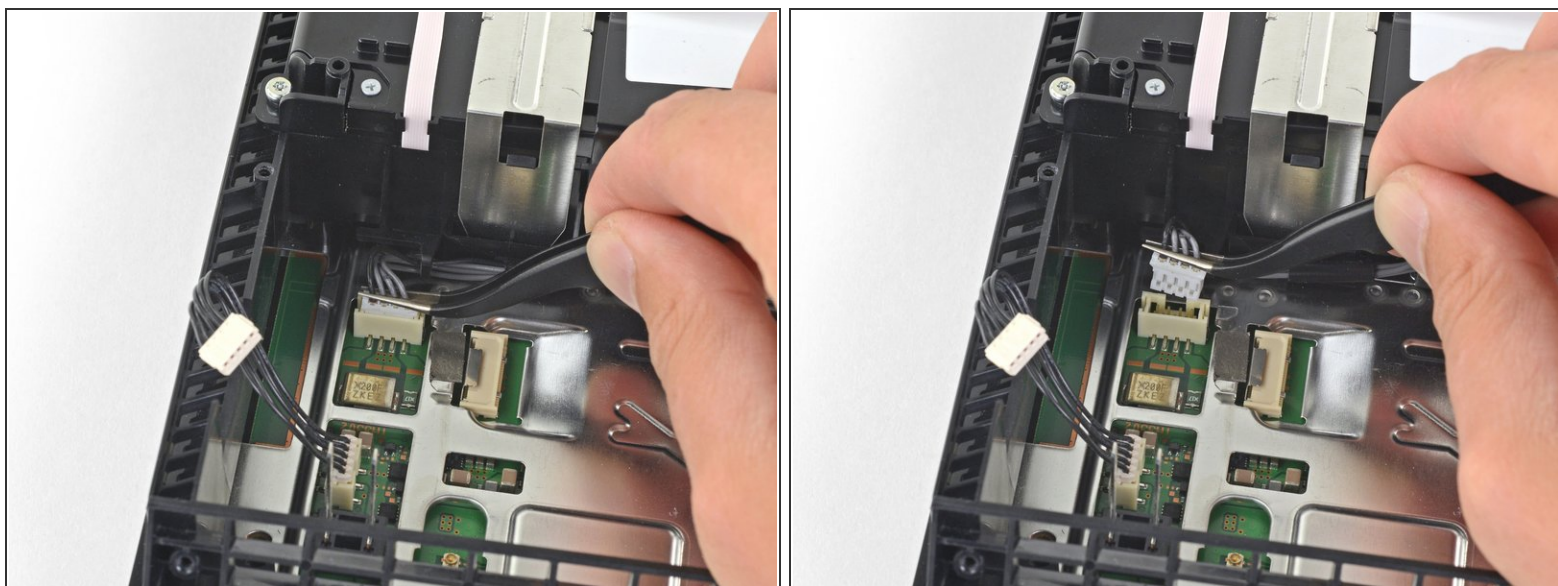
- Use your fingernail to press down on the metal release lever of the ribbon cable on top of the optical drive.
 - Use your fingers or a pair of tweezers to disconnect the ribbon cable by pulling on the black tab.
- ☒ You do not need to press the metal lever when inserting the ribbon cable back in. You will hear a click once it is fully inserted.

Step 15



- Use your fingernail to press down the metal release lever for the ribbon cable connected to the motherboard.
 - Use your fingers or a pair of tweezers to disconnect the ribbon cable by pulling on the black tab.
 - Set the ribbon cable aside for reassembly.
- ☒ You do not need to press the metal lever when inserting the ribbon cable back in. You will hear a click once it is fully inserted.

Step 16



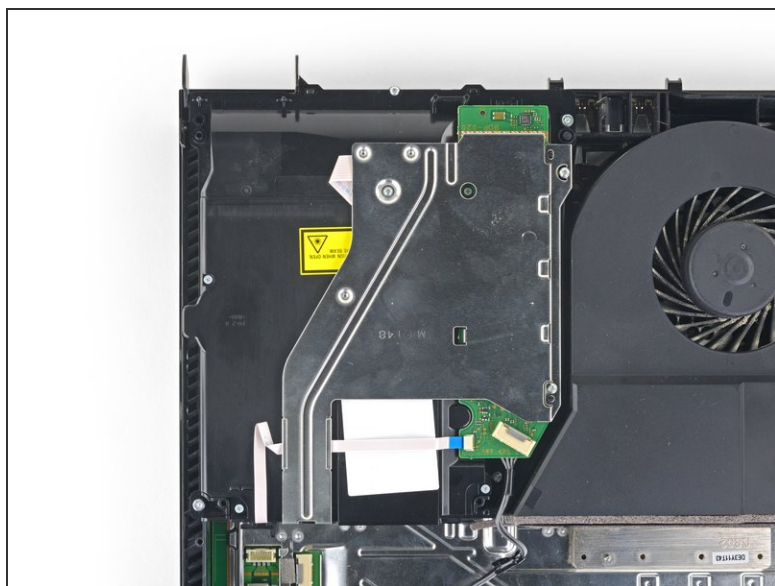
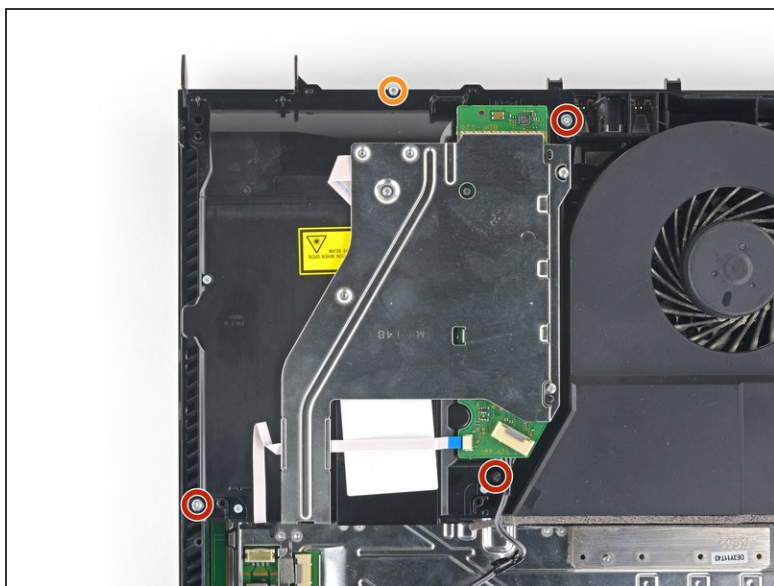
- Use your fingers or a pair of tweezers to disconnect the optical drive cable from the motherboard.

Step 17



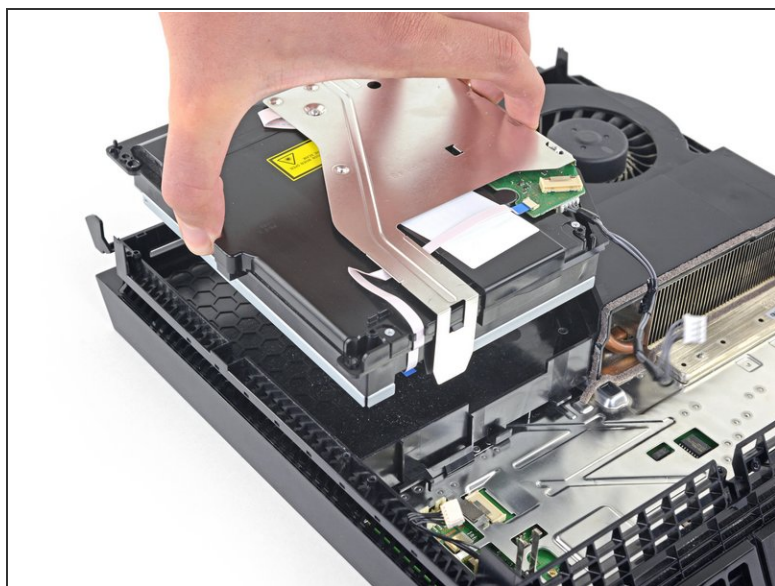
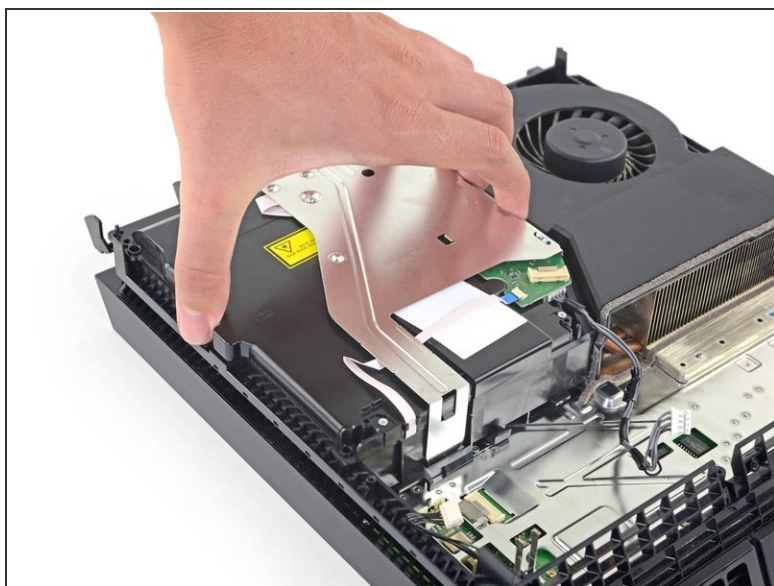
- Use your fingers or a pair of tweezers to remove the optical drive cable from the cable guides that hold it in place.

Step 18 — Remove the optical drive



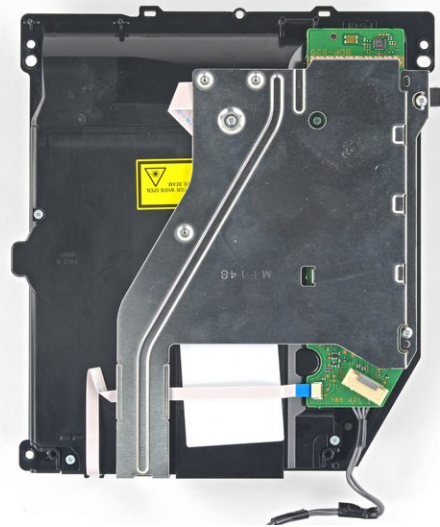
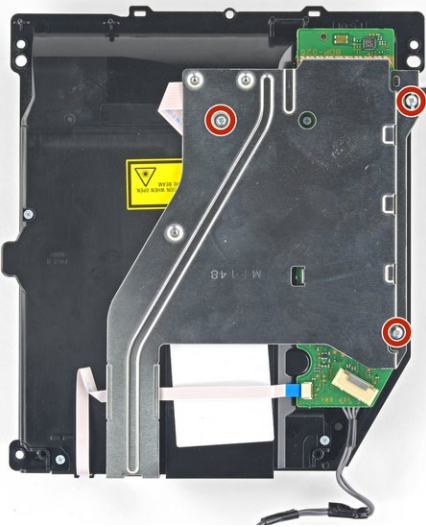
- Remove the four screws securing the optical drive.
 - Three 9.7 mm Torx screws
 - One 6.2 mm Phillips screw

Step 19



- Lift the optical drive straight up and out of the PS4.

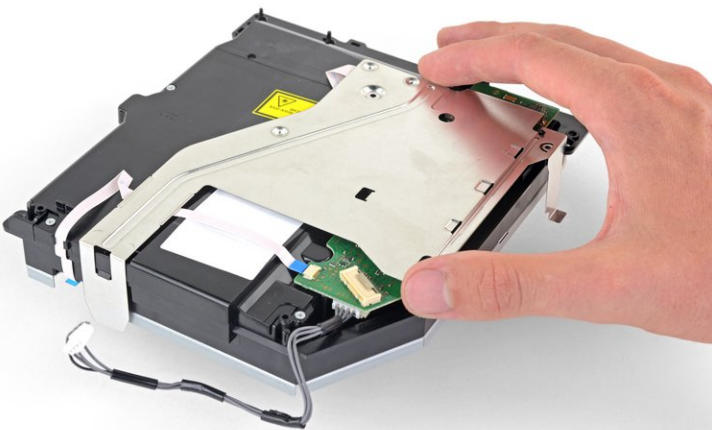
Step 20 — Remove the PCB



i If you purchased an optical drive with the PCB board and bracket included, skip the remaining steps and begin reassembly.

- Remove the three 6.2 mm Phillips screws from the metal bracket.

Step 21



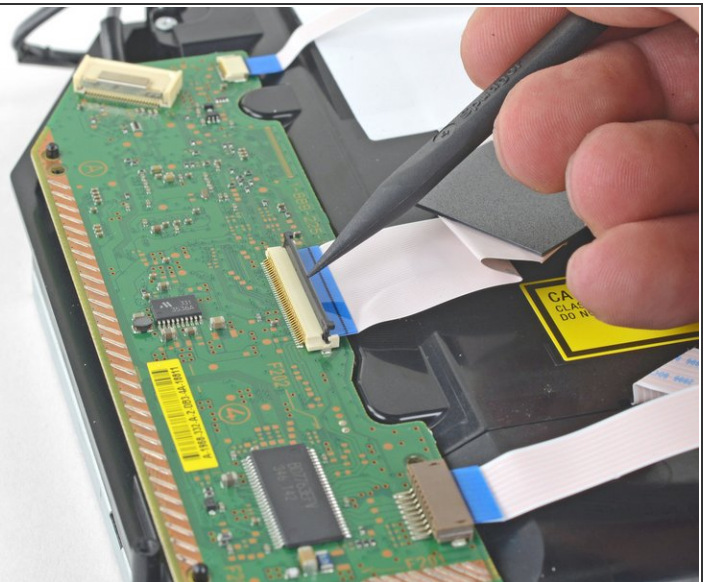
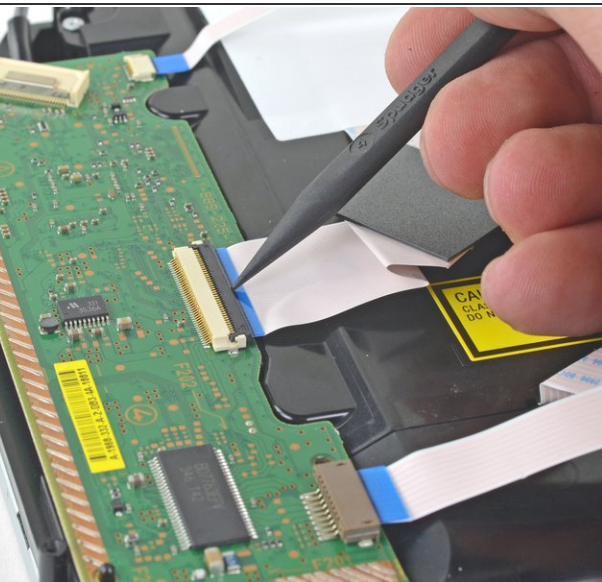
- Lift the metal bracket straight up to separate it from the optical drive.

Step 22



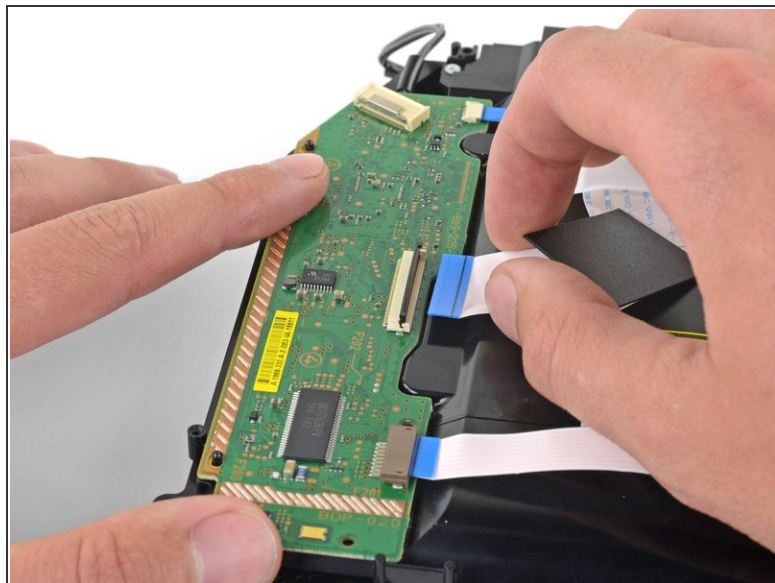
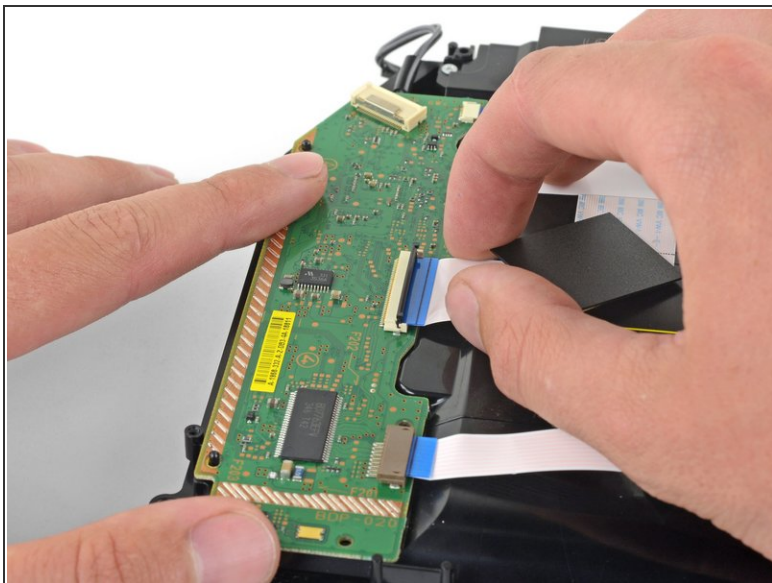
- Remove the 6.4 mm Phillips screw from the PCB board.

Step 23



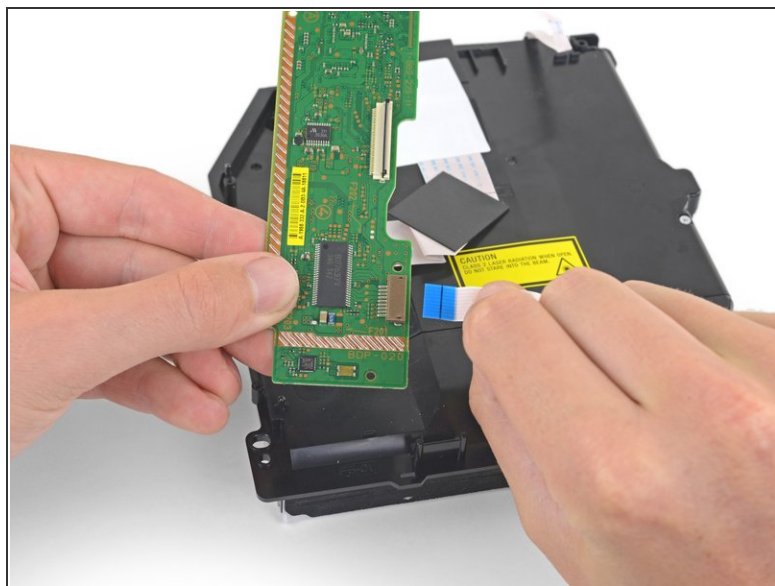
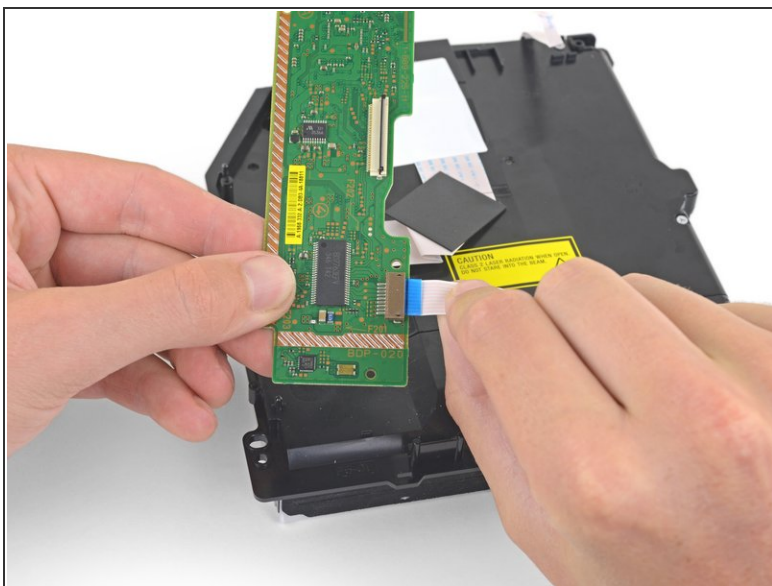
- Use the tip of a spudger to flip open the ZIF connector locking bar.

Step 24



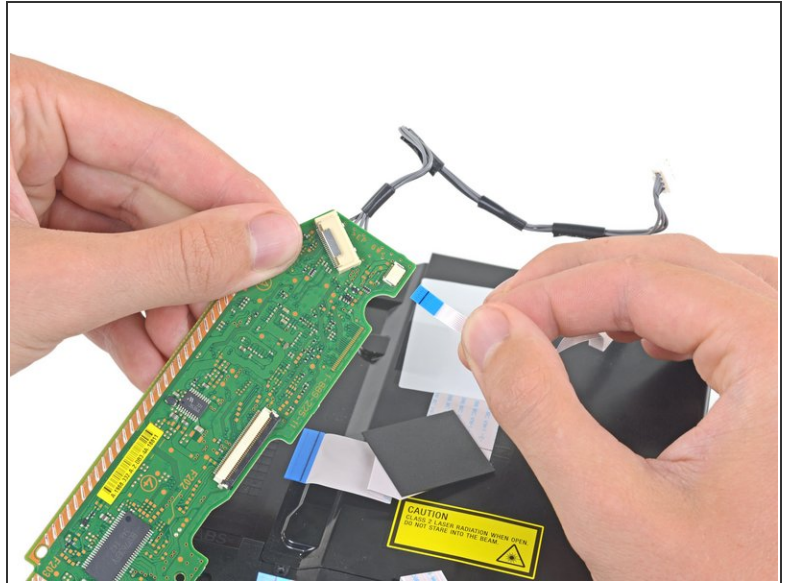
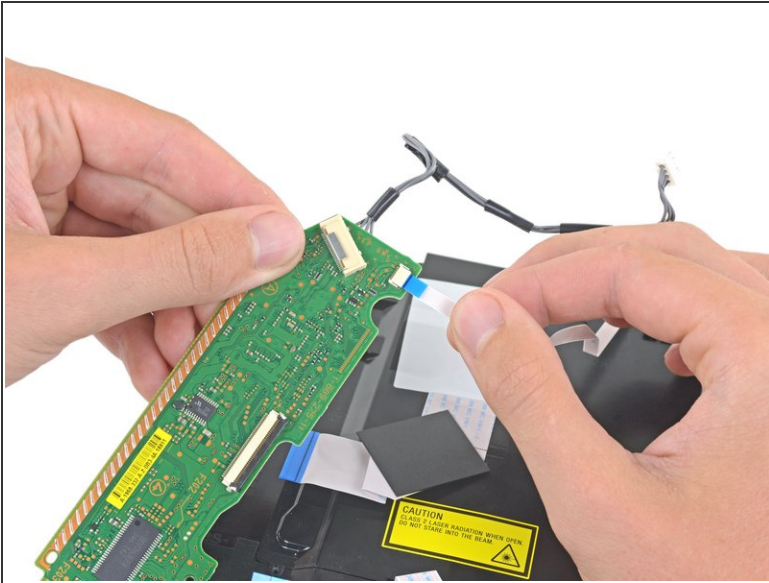
- Pull the ribbon cable straight out of the ZIF connector.

Step 25



- Hold the PCB in one hand and the lower ribbon cable in the other.
- Gently pull the lower ribbon cable straight out of the socket.

Step 26



- Hold the PCB in one hand and the upper ribbon cable in the other.
- Pull the upper ribbon cable straight out of the socket.

Step 27



- Remove the PCB.

To reassemble your device, follow the above steps in reverse order.

Take your e-waste to an [R2 or e-Stewards certified recycler](#).

Repair didn't go as planned? Check out our [Answers community](#) for troubleshooting help.

Compare your new replacement part to the original part—you may need to transfer remaining components or remove adhesive backings from the new part before installing.