



PlayStation 4 Hard Drive Replacement

How to replace a hard drive on a Sony Playstation 4.

Written By: Sam Omiotek



INTRODUCTION

Follow this guide to replace the hard drive on your Sony Playstation 4. If you're upgrading the hard drive and want to keep your saved game data and settings, **be sure to back up the data to a separate external storage device before beginning this procedure.**

Unplug your PS4 before beginning any repairs.



TOOLS:

- [Phillips #0 Screwdriver](#) (1)



PARTS:

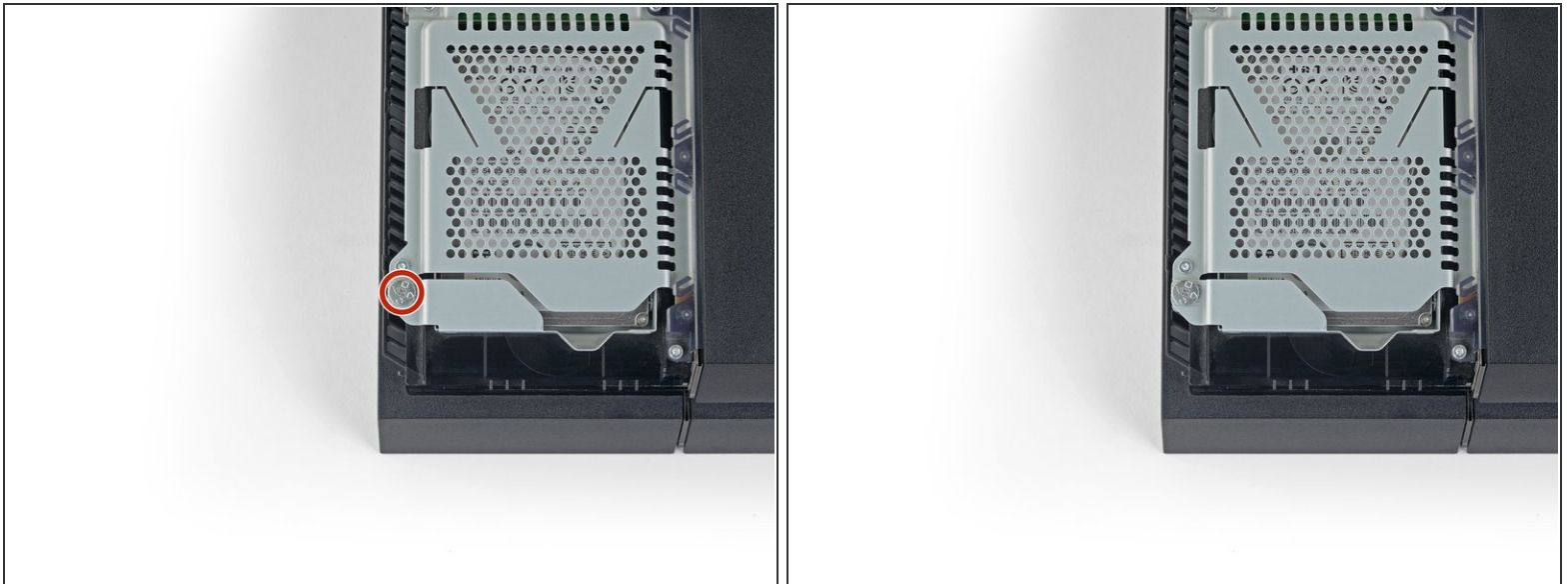
- [PlayStation 4 Hard Drive and Bracket](#) (1)

Step 1 — Remove the hard drive cover



- Grip the PS4 with both hands along the gap in the top cover.
- Push the glossy side of the top cover with your thumbs until it pops to the side.
- Lift the glossy top cover up and back to remove it from the PS4.

Step 2 — Remove the hard drive bracket screw



- Use a Phillips screwdriver to remove the 6.5 mm screw securing the hard drive bracket to the enclosure.

Step 3 — Remove the hard drive bracket



- Pull the hard drive bracket out of the enclosure.

⚠ Be careful not to drop the hard drive. The internal components are fragile and are susceptible to damage by sudden shock.

Step 4 — Remove the hard drive



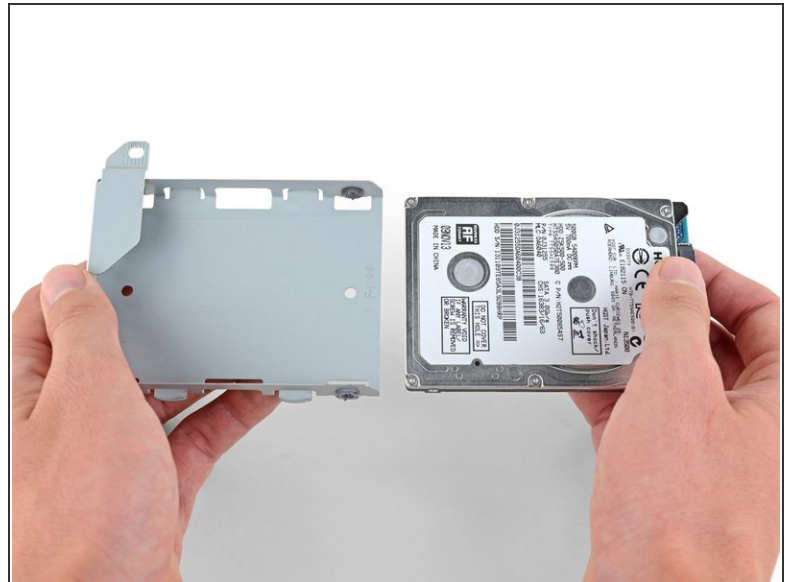
- Remove the two 7.2 mm screws from the right side of the hard drive tray.

Step 5



- Remove the two 7.2 mm screws from the left side of the hard drive tray.

Step 6



- Remove the hard drive from the hard drive tray.

To reassemble your device, follow the above steps in reverse order.

You will need to reinstall the PS4 operating system after you replace your hard drive. Follow Sony's instructions to [initialize your PS4 and reinstall system software](#).

Take your e-waste to an [R2 or e-Stewards certified recycler](#).

Repair didn't go as planned? Check out our [Answers community](#) for troubleshooting help.