



Gateway MA6 Laptop Wireless Card Replacement

This guide will show the steps to replace the wireless card in your laptop.

Written By: Chris Naughton



INTRODUCTION

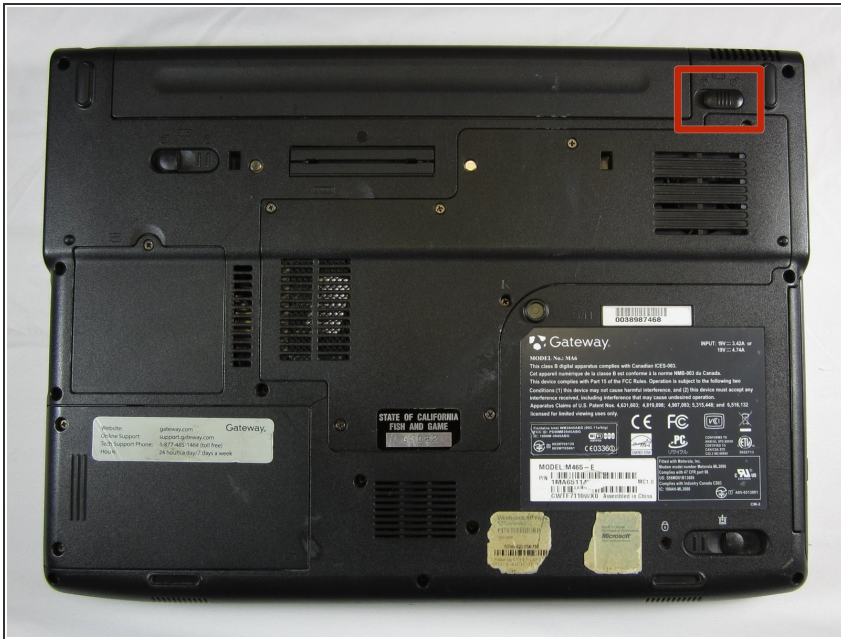
The wireless card regulates laptop connectivity to wireless networks for internet access. If your laptop has trouble connecting to a working wireless network, the wireless card may be damaged and may have to be replaced.



TOOLS:

- [Phillips #0 Screwdriver](#) (1)
 - [iFixit Opening Tools](#) (1)
-

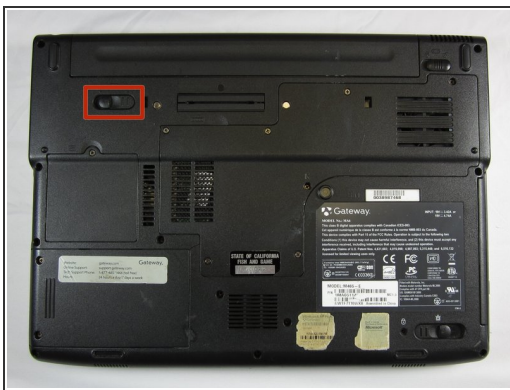
Step 1 — Battery



⚠ To prevent injury, make sure the laptop is unplugged before removing the battery.

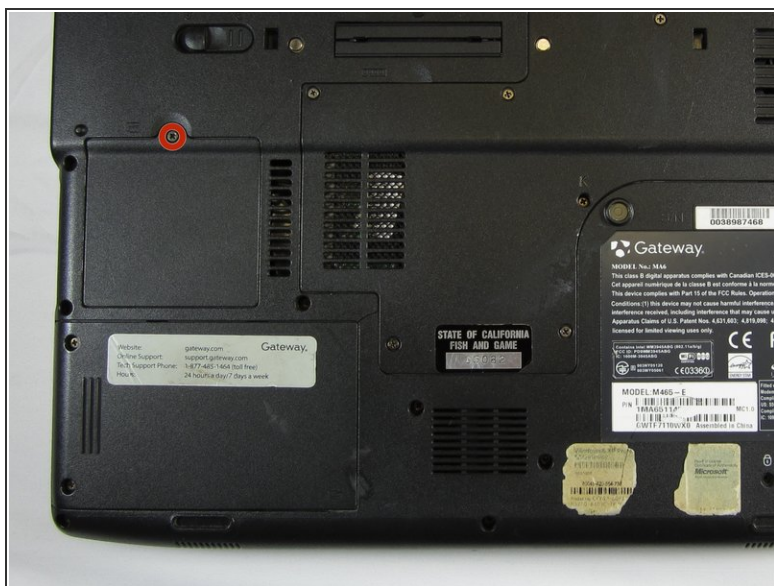
- Make sure the switch in the upper right corner of the laptop is switched to the "unlock" position (toward the unlocked padlock icon).

Step 2



- Pull the switch on the upper lefthand corner of the laptop towards the unlocked padlock icon.
- Firmly pull the battery outwards and away from the laptop.

Step 3 — Wireless Card



- Loosen the 3mm Phillips #0 screw from the back of the WiFi card backplate.
- ⓘ The screw will remain in the backplate.
- Lift upwards on the back plate to remove it.

Step 4



- Use the plastic opening tool to gently pry upwards on the two connecting cables to remove them.

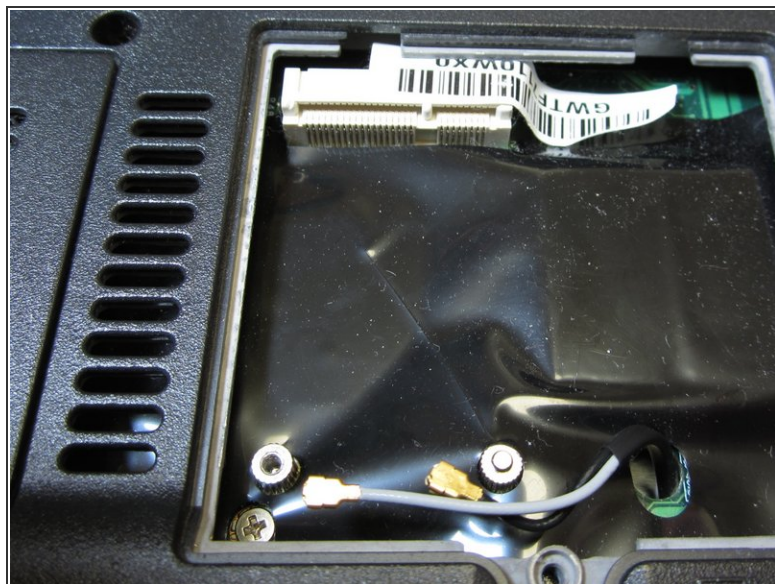
Step 5



- Remove the 2 mm Phillips #0 screw.

ⓘ The card will lift itself up 30° after the screw has been removed.

Step 6



- Hold the WiFi card on both sides and pull outwards to remove it.

To reassemble your device, follow these instructions in reverse order.