



# Samsung S85 Outside Casing Replacement

The outside casing is the black plastic casing surrounding the camera itself. It is fairly easy to remove and replace.

Written By: Avinash Salgam



---

## INTRODUCTION

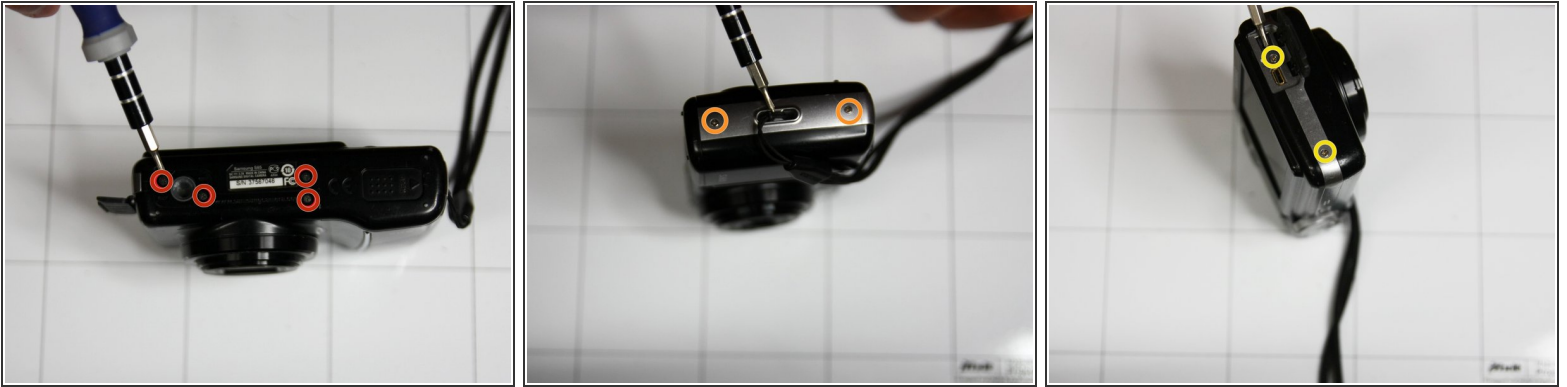
If your outside casing is damaged, you can remove it and replace it with a new one.



### TOOLS:

- [Phillips #00 Screwdriver](#) (1)
-

## Step 1 — Outside Casing



- Remove 4 screws from bottom of camera
- Remove 2 screws from side of camera
- Remove 2 screws from side of camera
- ☑ Place Screws on magnetic surface or location where they will not roll away

## Step 2



- Squeeze area noted by blue square and pull outside shell apart from remaining camera.

To reassemble your device, follow these instructions in reverse order.

