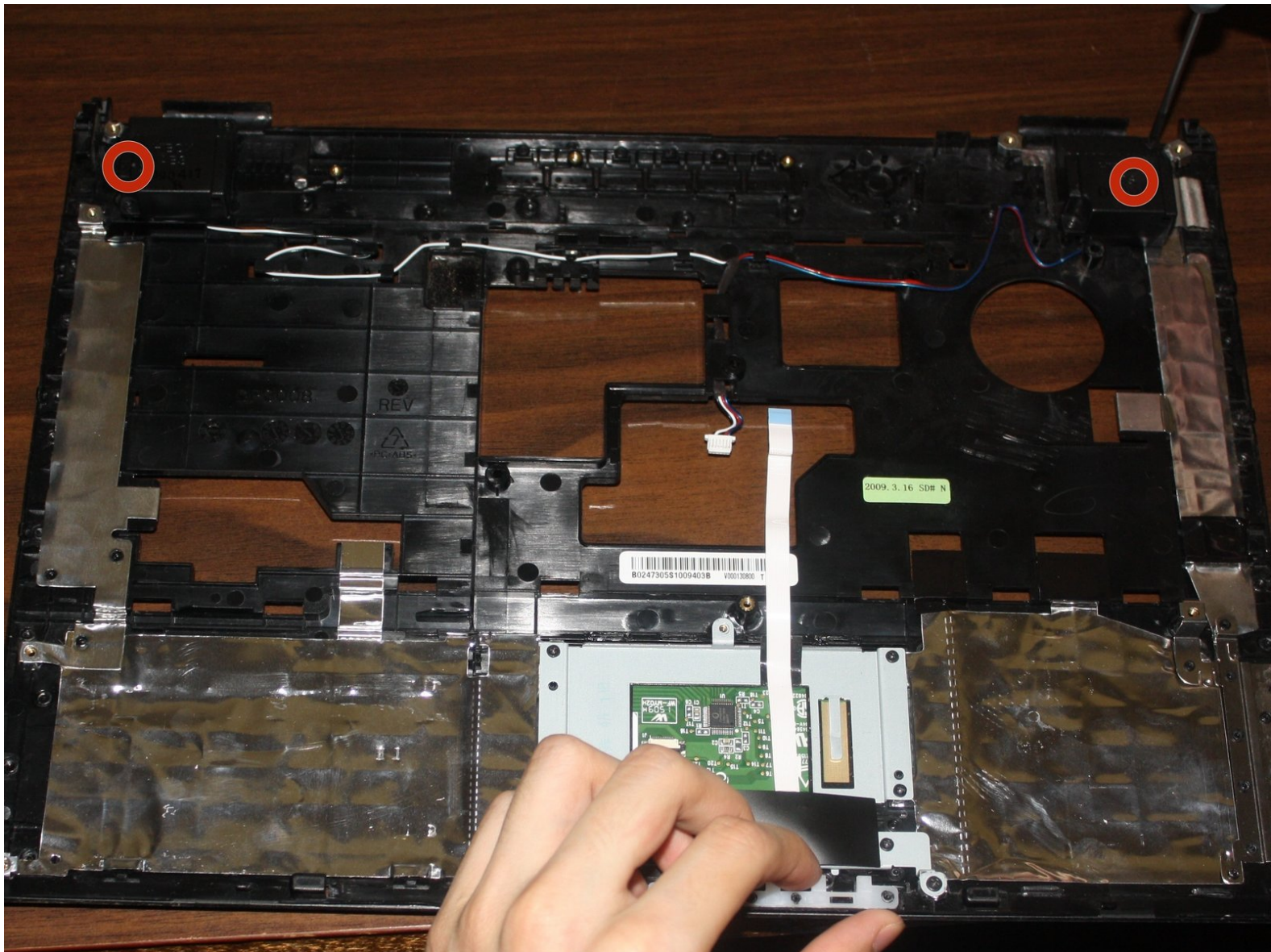




# Toshiba Satellite L305D-S5950 Speaker Replacement

Written By: William



---

## INTRODUCTION

In order to replace the speakers on your device the keyboard and motherboard cover need to be removed first.



### TOOLS:

- [Phillips #0 Screwdriver](#) (1)
  - [Spudger](#) (1)
-



## Step 1 — Battery



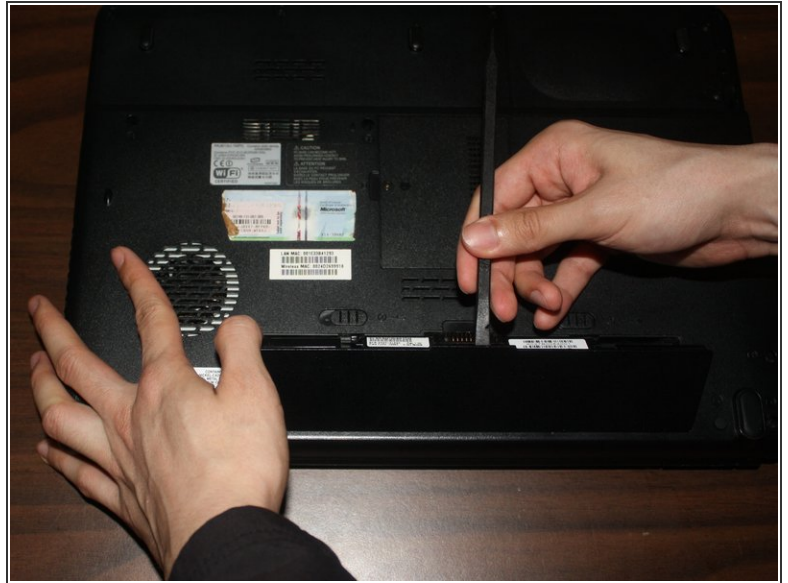
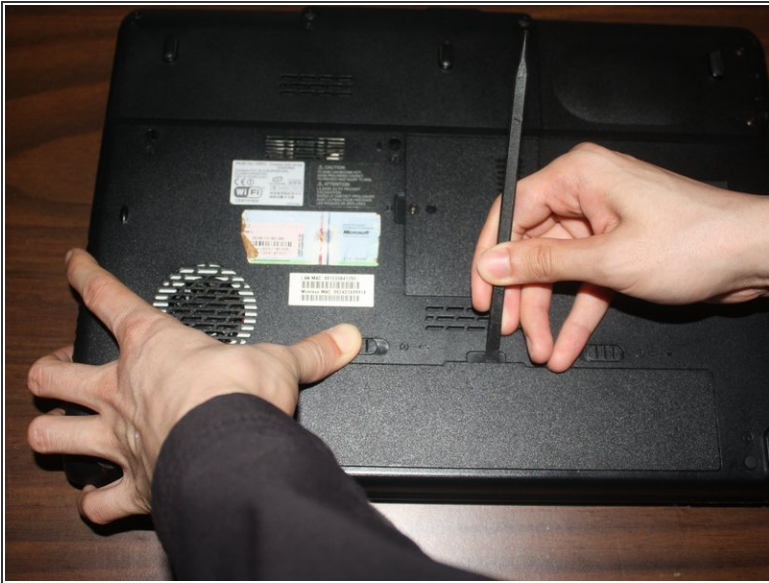
- Locate the two sliding battery locks on the underside of the laptop.

## Step 2



- Locate the right battery lock and slide it to the right.

### Step 3



- While holding the left battery lock to the left, lift up the battery using the tab located on the top center of the battery.

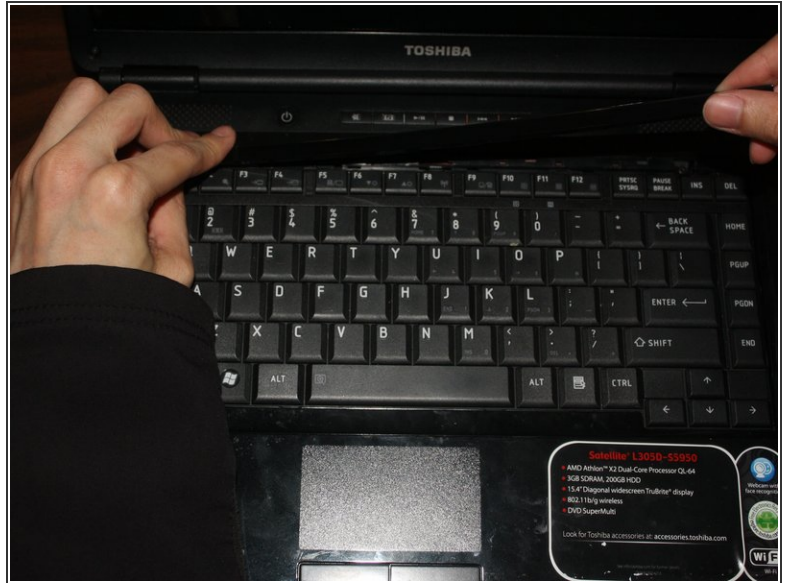
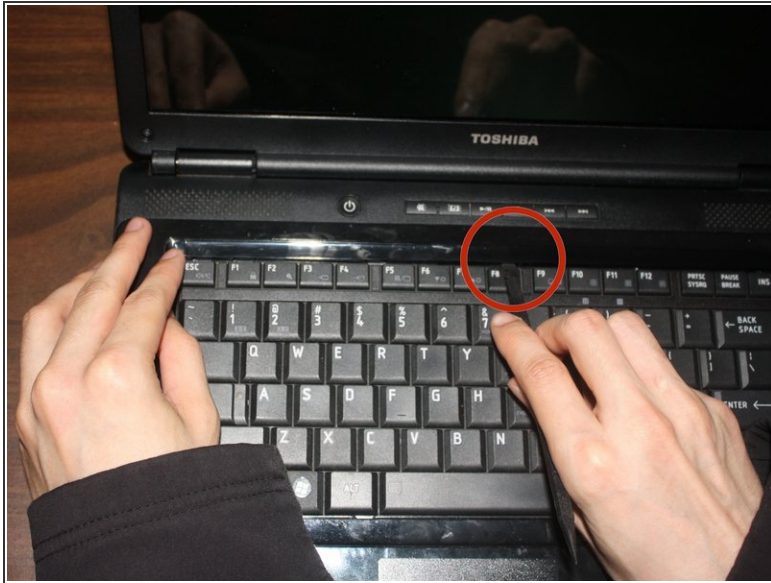
### Step 4



- Remove the battery from the laptop.



## Step 5 — Keyboard



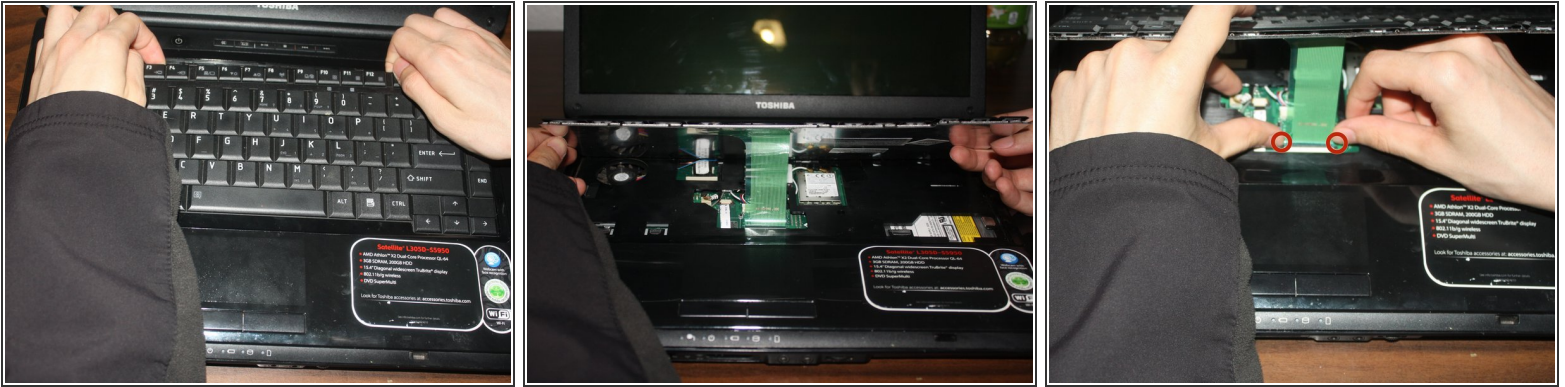
- Locate the plastic strip at the top of the keyboard.
- Use a pry tool to remove the plastic strip.
- Using your hands pull out the rest of the plastic strip.

## Step 6



- Use a phillips head #0 screwdriver to remove the two 3.75mm screws holding the keyboard in place.

## Step 7



- Lift up the top of the keyboard to remove it.
- ⚠ Under the keyboard there is a ribbon cable connecting the keyboard to the laptop. Do not just quickly pull out the keyboard.
- Unlock the ribbon cable by pushing on the locks that are located on both sides of ribbon cable.
- Unplug the ribbon cable from the laptop.

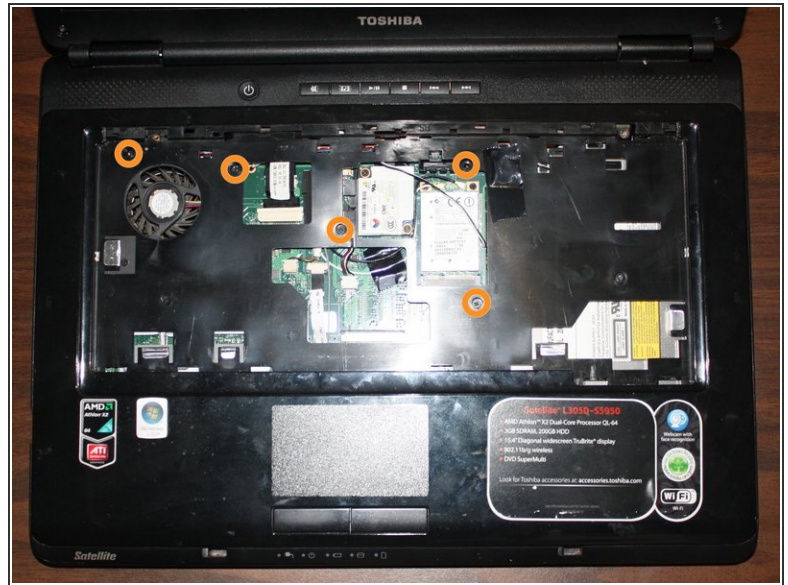
## Step 8



- Remove the keyboard completely from the laptop.



## Step 9 — Motherboard Cover



- Remove all 6.75mm screws from the bottom of the laptop. The 3 screws under the battery are 3.75mm.
- Remove all 5.25mm screws from the top of the laptop.

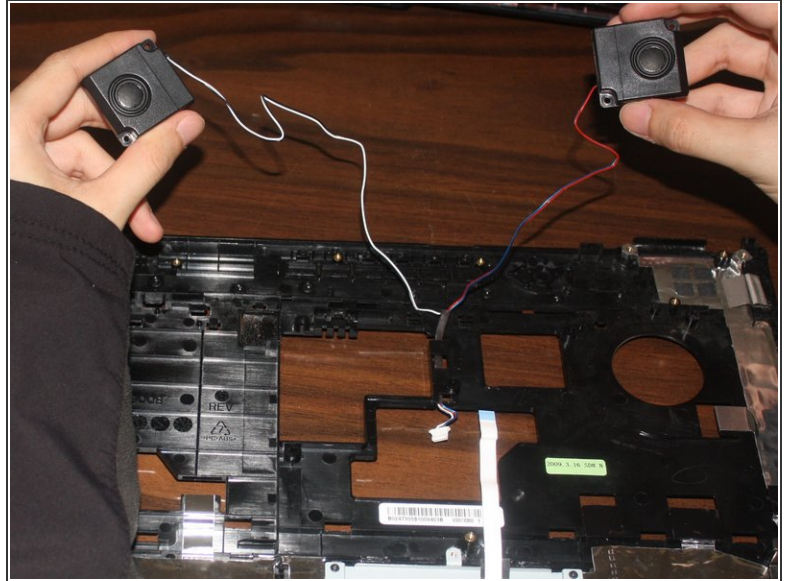
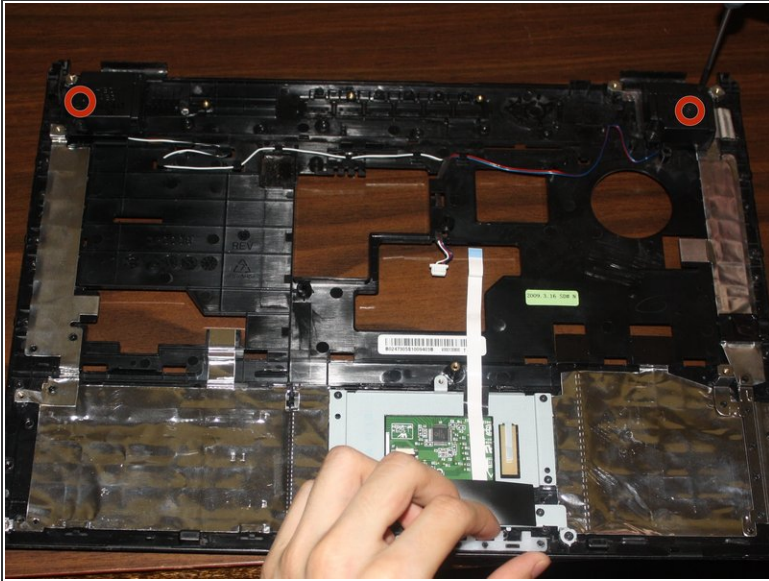
## Step 10



- Unplug the wires highlighted with red squares.
- Using a pry tool and your hands to remove the motherboard cover.

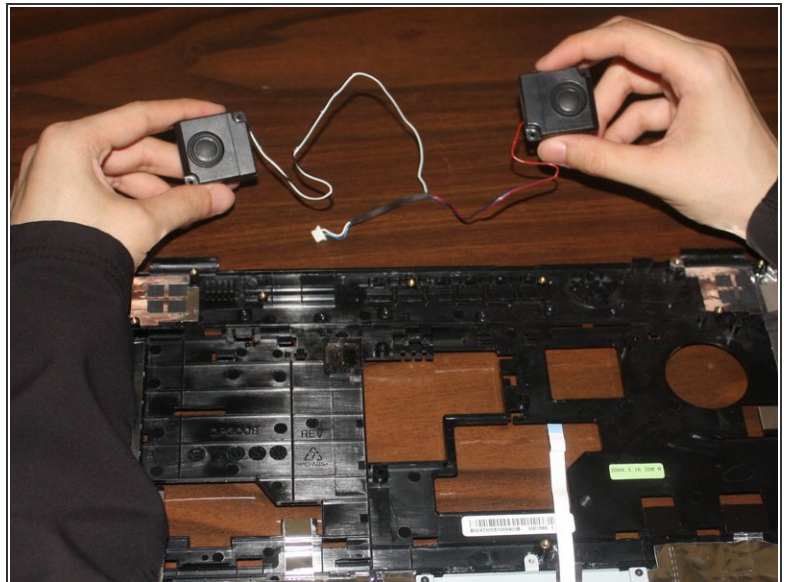
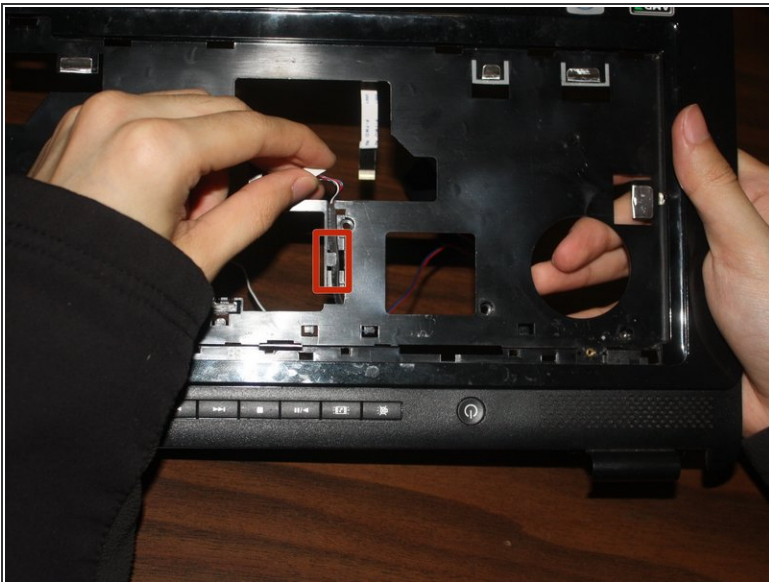


## Step 11 — Speaker



- Use a phillips head #00 screwdriver to remove the two 5.25mm screws.

## Step 12



- Turn the keyboard housing over and disconnect the speaker power wire from the keyboard housing.
- Remove both speakers.



To reassemble your device, follow these instructions in reverse order.