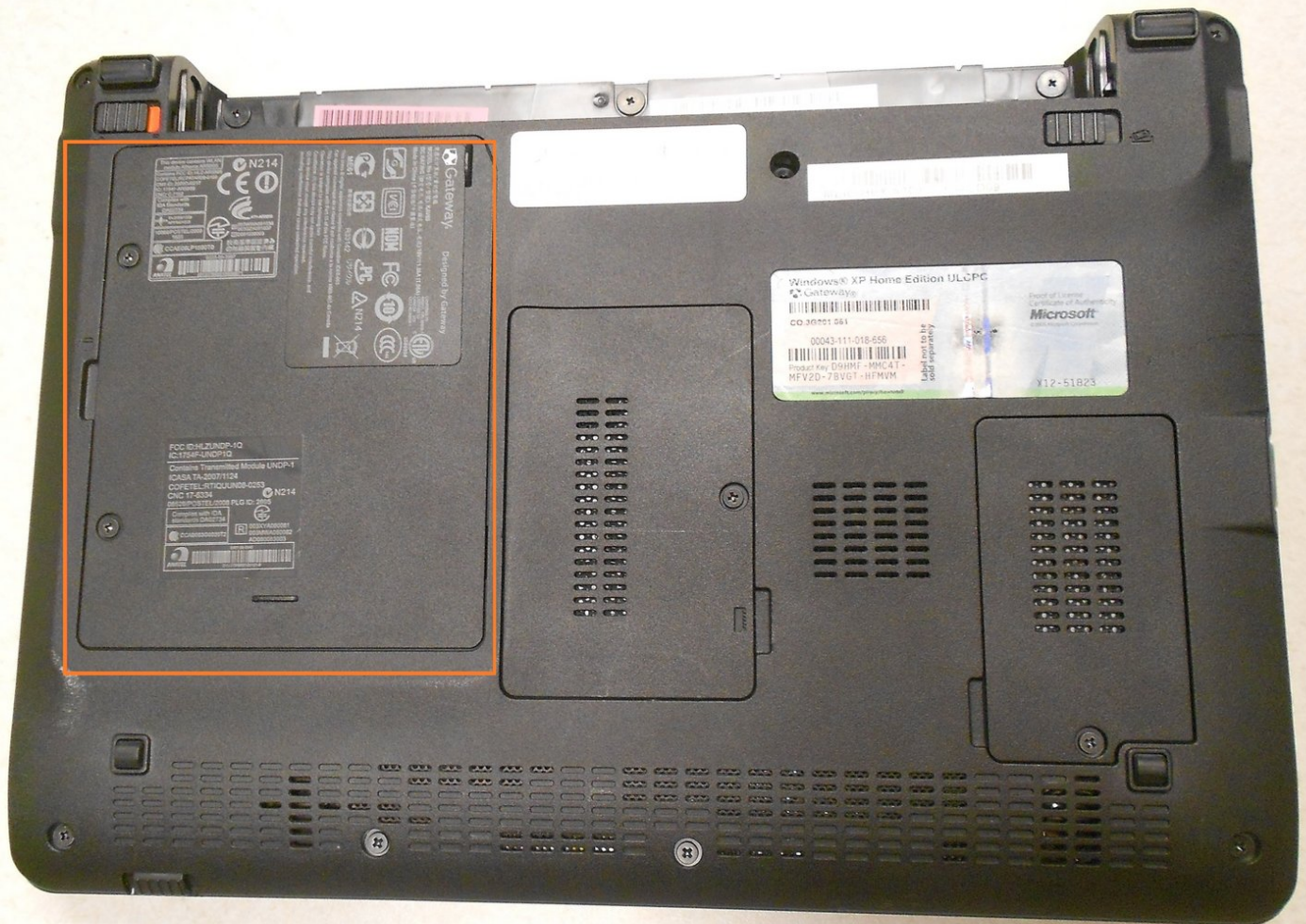




# Gateway KAV60 LT2016U Netbook Hard Drive Replacement

Written By: Kyle



---

## INTRODUCTION

This is a guide on how to remove and replace the hard drive on the Gateway KAV60 LT2016U Netbook. Reasons for removal include:

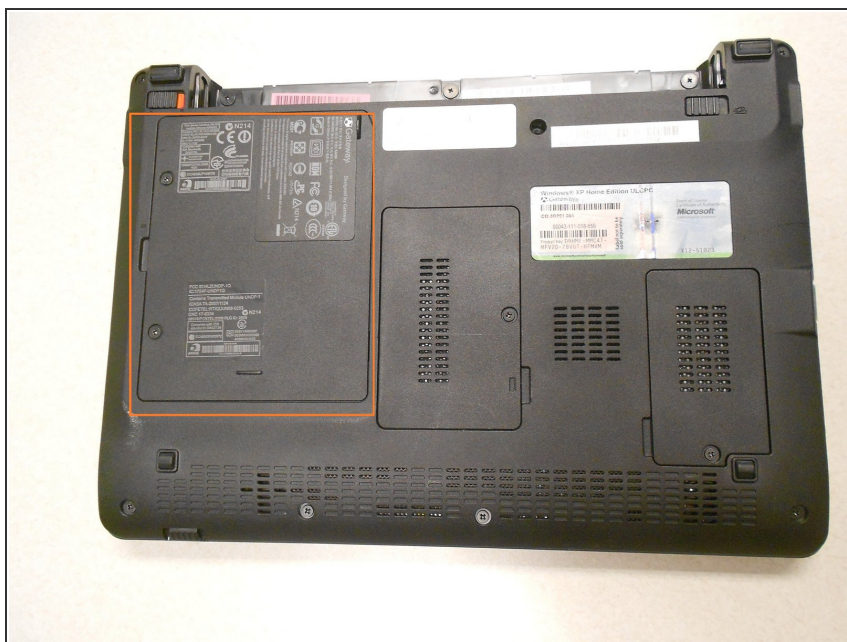
- Current hard drive no longer works
- Hard drive upgrade



### TOOLS:

- [Phillips #0 Screwdriver](#) (1)
  - [iFixit Opening Tools](#) (1)
-

## Step 1 — Hard Drive



- The hard drive is located on the bottom of the laptop on the left hand side.

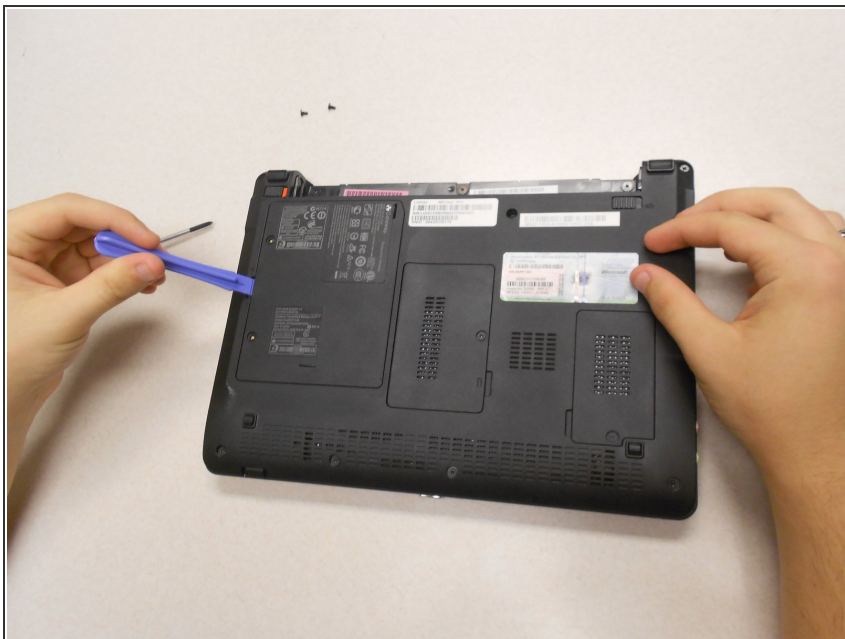
## Step 2



- Remove the two screws on the cover with the specified screwdriver.



## Step 3



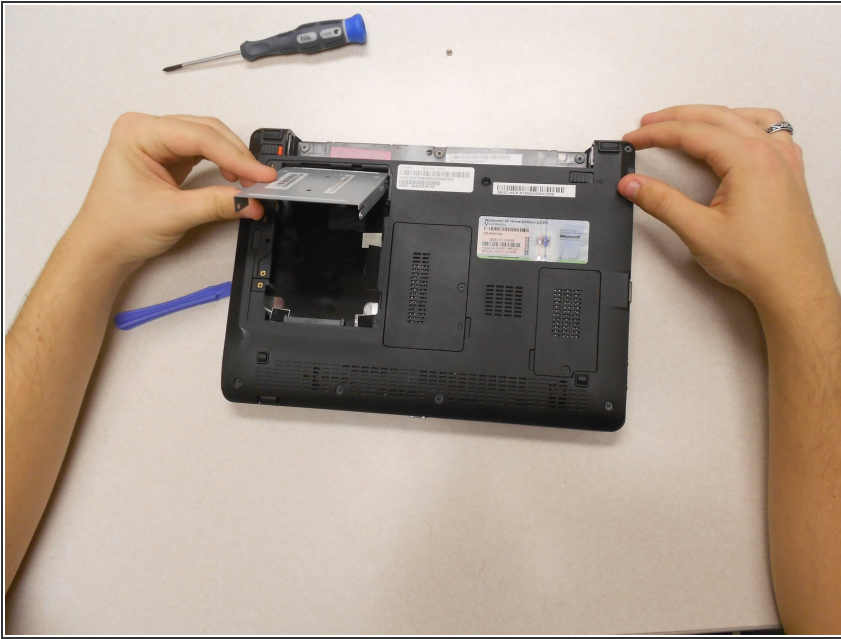
- Lift off the cover with the plastic opener.

## Step 4



- Remove the one screw holding the hard drive in place with the same screw driver.

## Step 5



- Slide the hard drive up and remove it from the laptop.

To reassemble your device, follow these instructions in reverse order.