



# Toshiba Satellite L305D-S5950 Battery Replacement

This guide will help you through replacing your battery.

Written By: William



## INTRODUCTION

This guide illustrates how to replace the battery of the Toshiba Satellite L305D-S5950.



## Step 1 — Battery



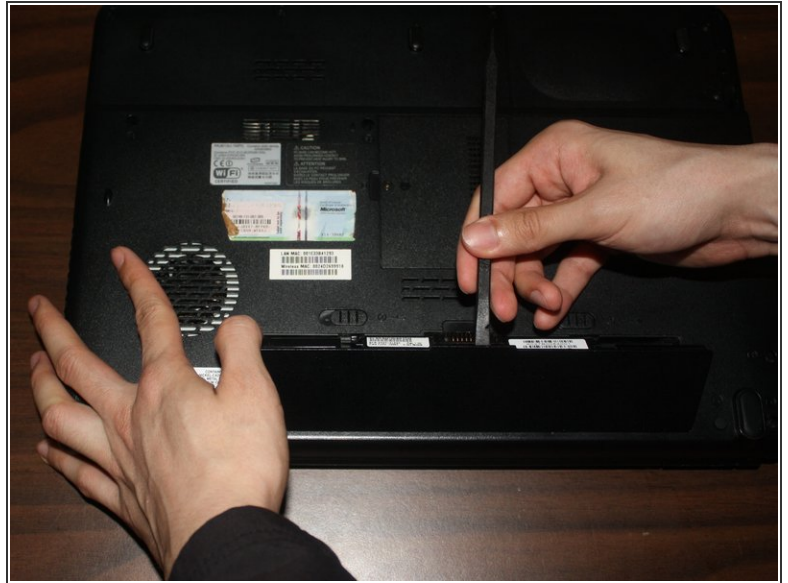
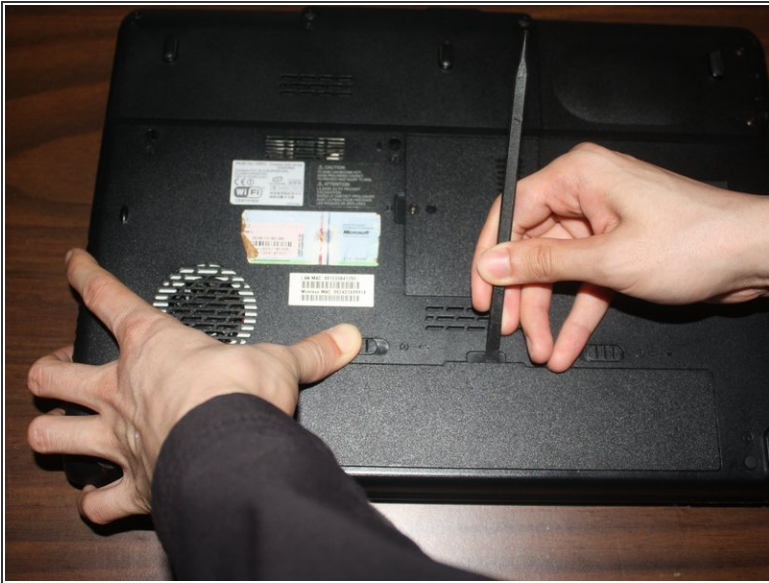
- Locate the two sliding battery locks on the underside of the laptop.

## Step 2



- Locate the right battery lock and slide it to the right.

### Step 3



- While holding the left battery lock to the left, lift up the battery using the tab located on the top center of the battery.

### Step 4



- Remove the battery from the laptop.

To reassemble your device, follow these instructions in reverse order.

This document was generated on 2020-11-24 09:33:20 AM (MST).

