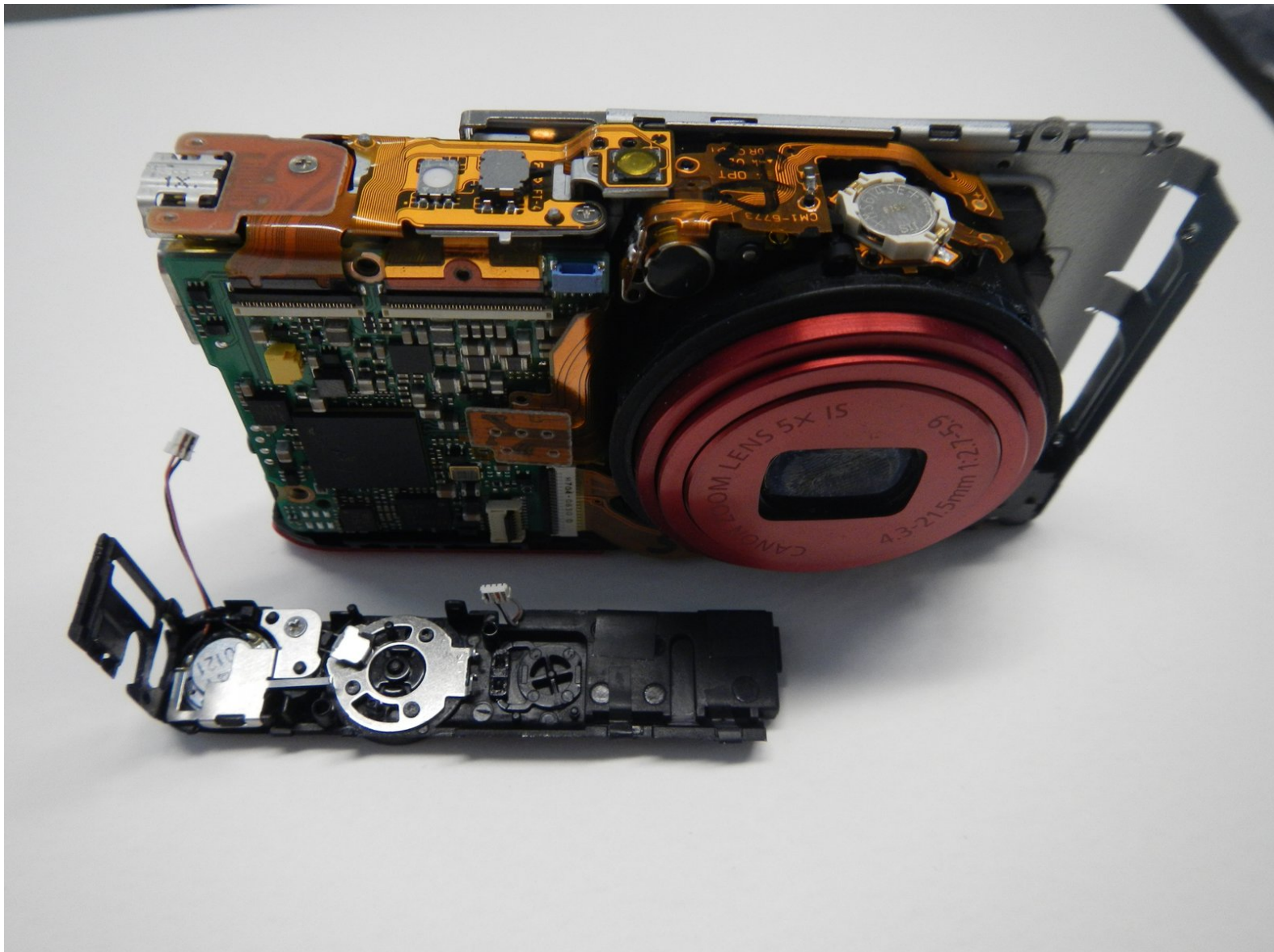




Canon PowerShot ELPH 300HS Power Button Replacement

Replacing a damaged power button

Written By: Kathryn Van Susante



INTRODUCTION

This will tell you how to replace a damaged power button.



TOOLS:

- [Spudger](#) (1)




PARTS:

- [Canon replacement power button assembly for PowerShot elph 300HS](#) (1)

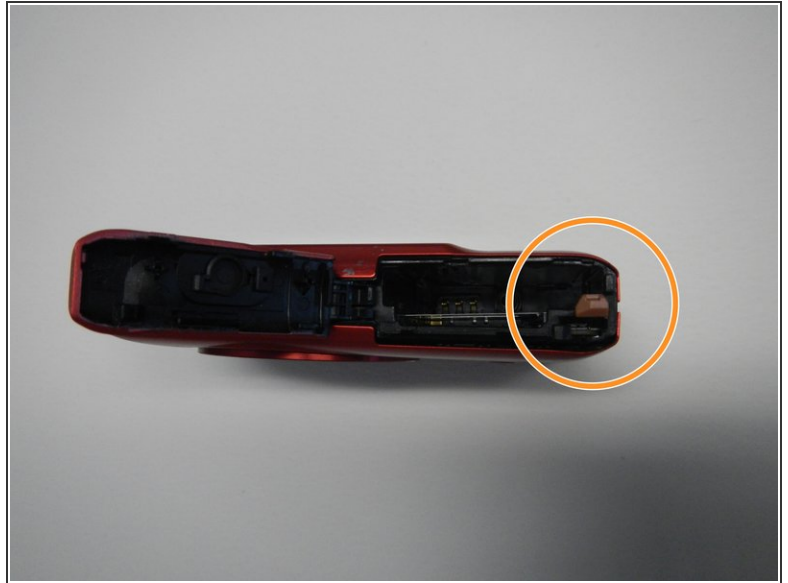
Step 1 — Safety First



 Before you begin taking apart your device, the first, and MOST IMPORTANT STEPS are to:

- Turn off your camera.
- Remove the battery to prevent risk of shock.

Step 2 — Remove the Battery



- Turn off your camera by pressing the power button, located on the top-center of the device.
- Locate the battery door on the bottom right area of the camera case.
- Place your finger firmly on the black rubber pad on the battery door and slide the door to the right to open it.
- Locate the orange battery release button beneath the battery door.
- Slide the battery release button downward to release the battery.

Step 3 — Left Side Screws



- ⚠ Be careful when removing screws, as they are stripped easily.
- Remove the two screws located on the left side of the camera case, using the Phillips screwdriver #00 (2.0 mm).

Step 4 — Bottom Screws



- Remove the two screws on the bottom of the camera located near the battery door (Phillips #00 screwdriver) (4.0 mm).

Step 5 — Right Side Screws



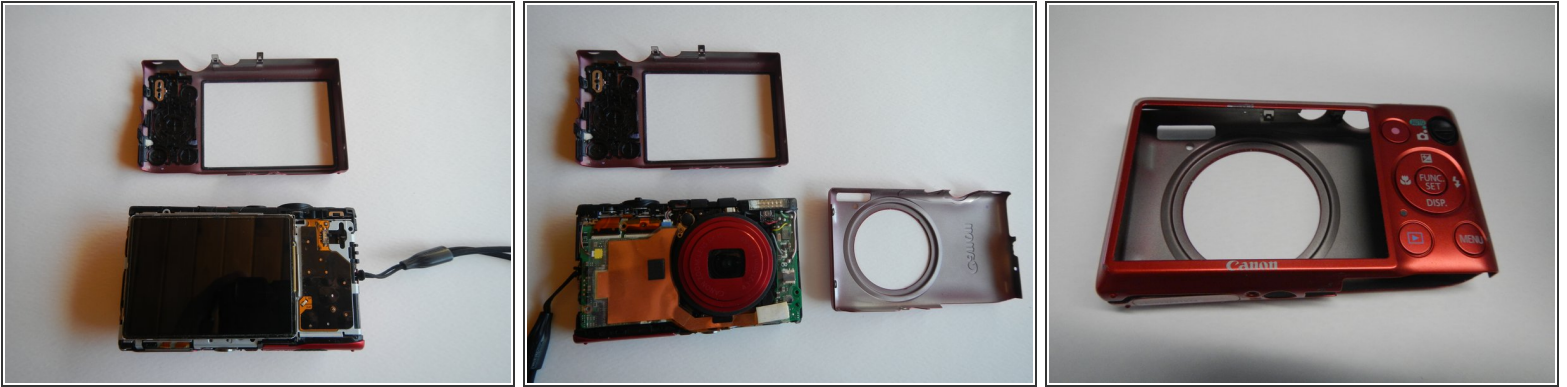
- Remove the screw located on the lower right side of the camera case (Phillips #00 screwdriver) (4.0 mm).
- Remove the HDMI A/V out port cover located on the upper right side of the camera.
- Remove the screw located just beneath the port cover removed in step 2. (Phillips #00 screwdriver) (2.0 mm).

Step 6



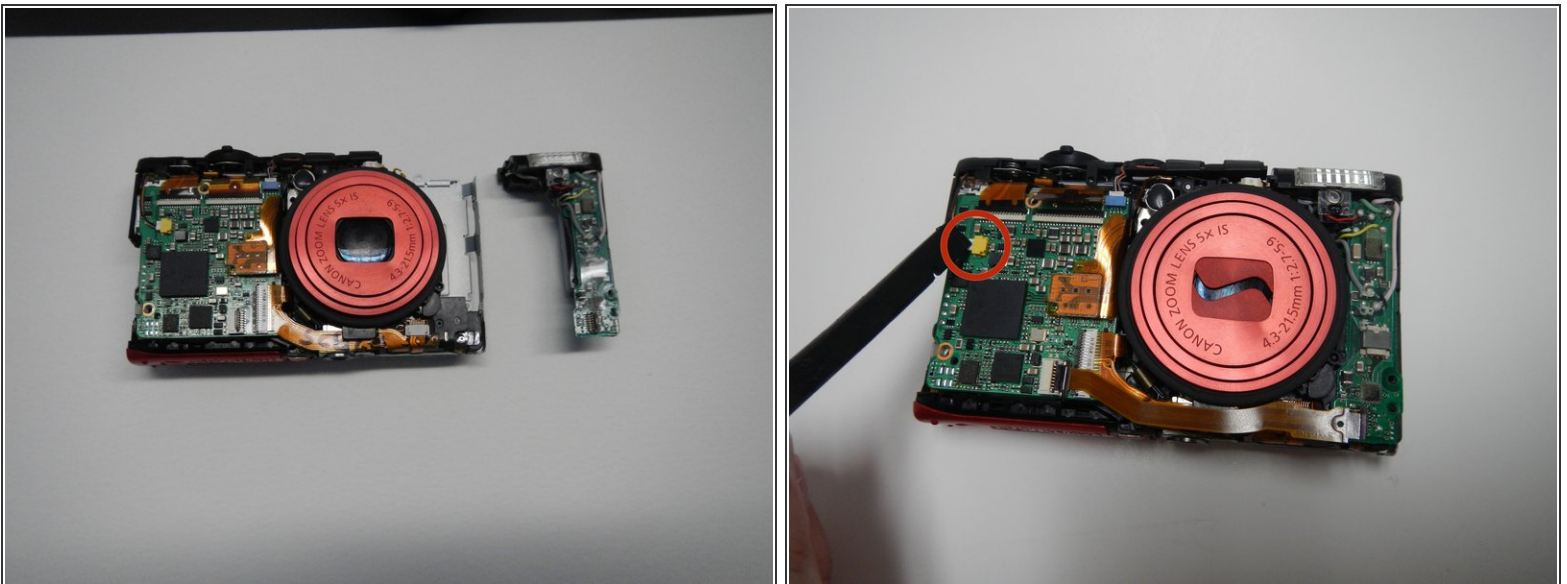
- Remove the back portion of the camera case to reveal the screw located on the top of the case.
- Remove the screw from the top of camera case, located next to the shutter button (Phillips #00 screwdriver) (1.5 mm).

Step 7 — Remove the Case from the Camera



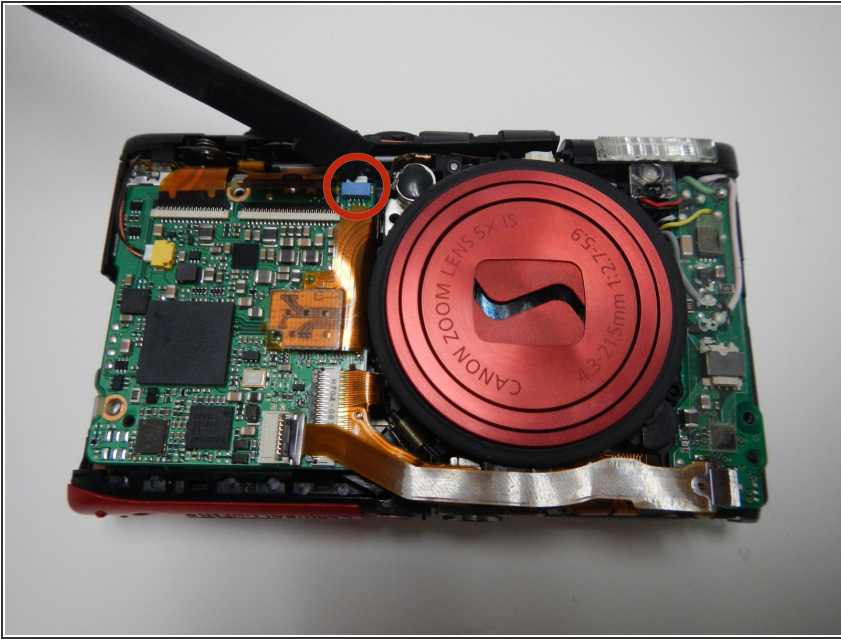
- Carefully pry the case apart at the seam, using your fingers.
- ⚠ Be careful not to over bend the small metal projections located along the seams. These aid in holding the case together.
- ⚠ Be careful not to allow dust or other particles to settle inside of the camera while the case is detached. This can cause functional issues in the future.

Step 8 — Power Button



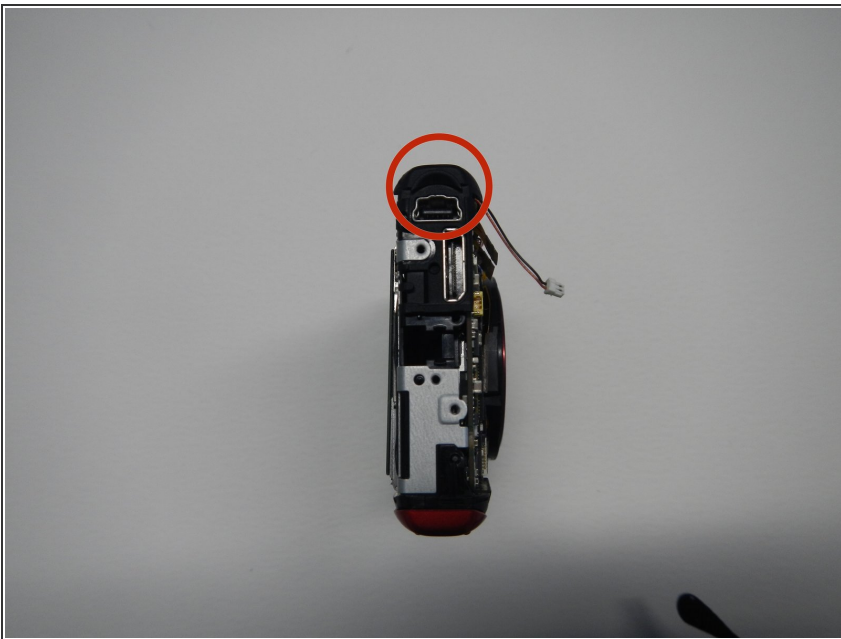
- Disconnect the small cable from the yellow port on the motherboard

Step 9



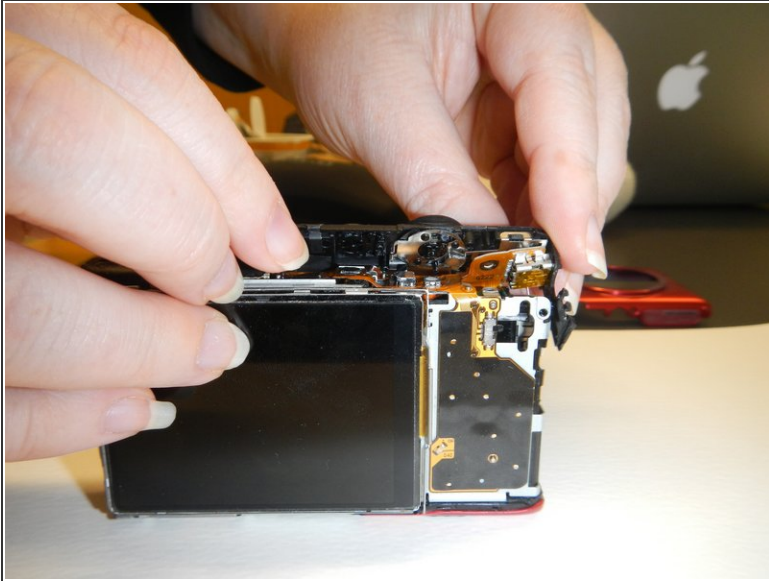
- Disconnect the small cable from the blue port on the motherboard

Step 10



- Lift the plastic over the HDMI port on the side of the camera

Step 11



- Lift from the back of the camera, angling forward and pull off to remove the power button assembly

To reassemble your device, follow these instructions in reverse order.