



Samsung Galaxy Ace Teardown

Samsung Galaxy Ace S5830 GENERAL 2G Network GSM 850 / 900 / 1800 / 1900 3G Network HSDPA 900 / 2100 HSDPA 850 / 1900 - Samsung Galaxy Ace S5830L SIM Standard Announced 2011, January Status Available. Released 2011, February BODY

Written By: AndreaBaglione





TOOLS:

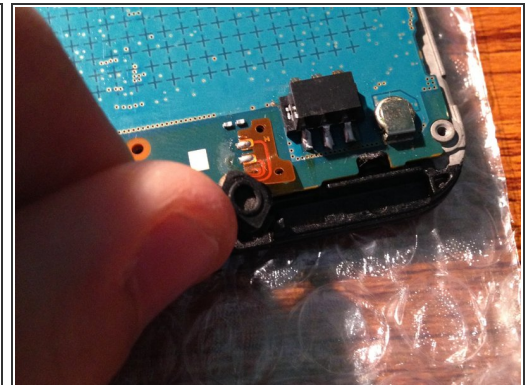
- [iSesamo Opening Tool](#) (1)
- [Heat Gun](#) (1)
- [Spudger](#) (1)
- [iFixit Opening Tools](#) (1)
- [Phillips #00 Screwdriver](#) (1)

Step 1 — Samsung Galaxy Ace Teardown



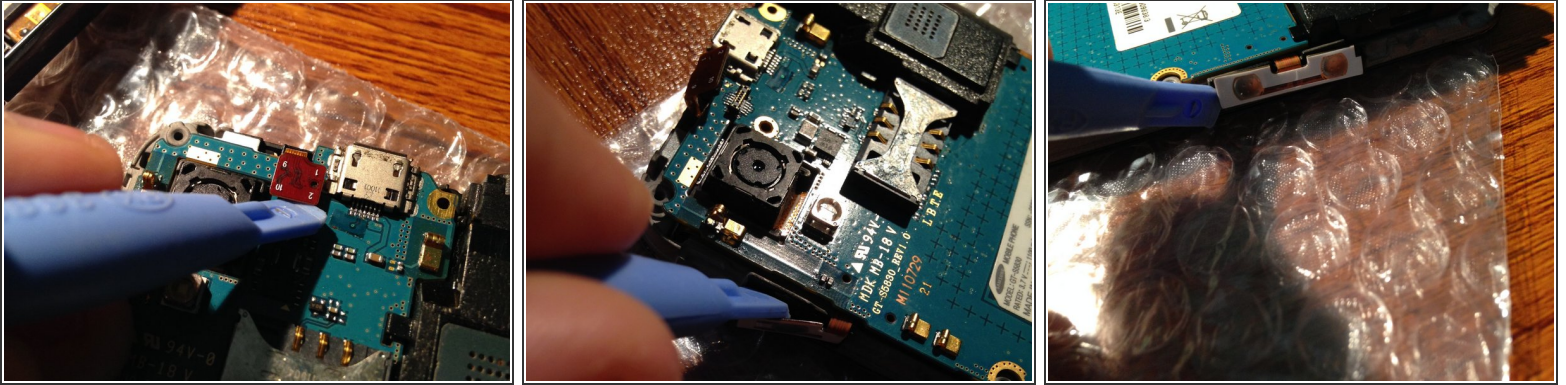
- Rotate your Phone.
- Remove the plastic battery door.
- Remove battery.
- Unscrew all 7 screws so that the cover can be removed.

Step 2



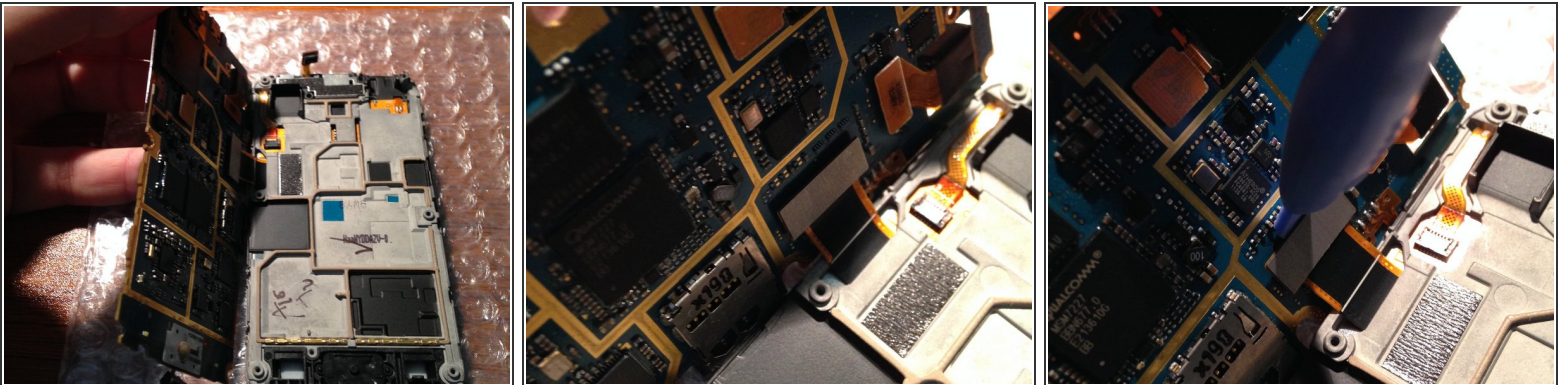
- With a plastic tool separate the frame from the aluminum plate. (either from the inside or outside)
- Make sure your Micro SD card is removed from the device Micro SD card slot.
- Disconnect the microphone using your fingers, be careful not to do too much pressure.

Step 3



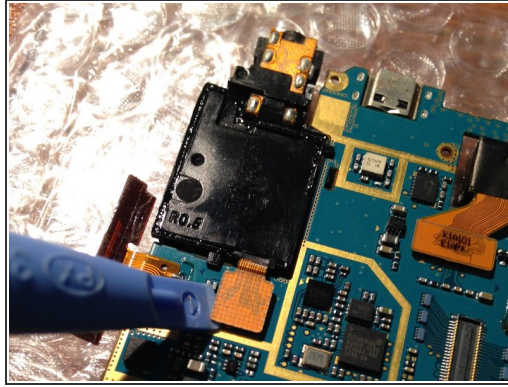
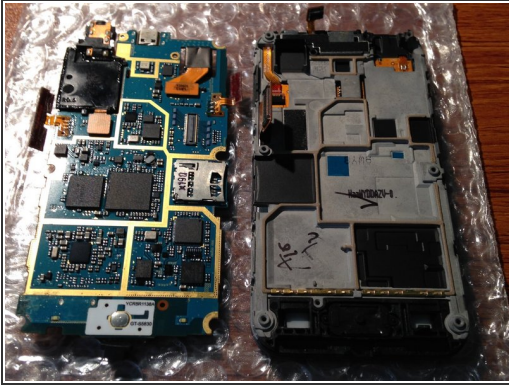
- Disconnect the light sensor and ear piece speaker. To remove this use a plastic tool.
- Disconnect the volume rocker, be very careful! They are very thin and glued with double-sided tape. If possible, use isesamo or something really thin!

Step 4



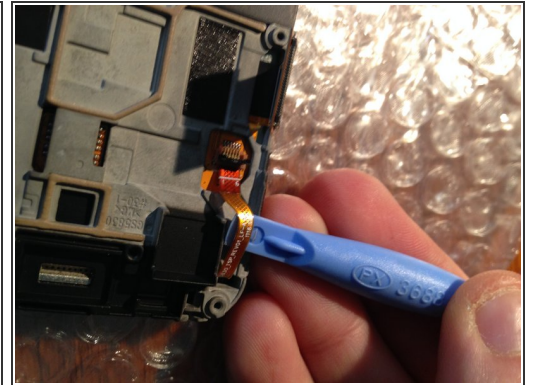
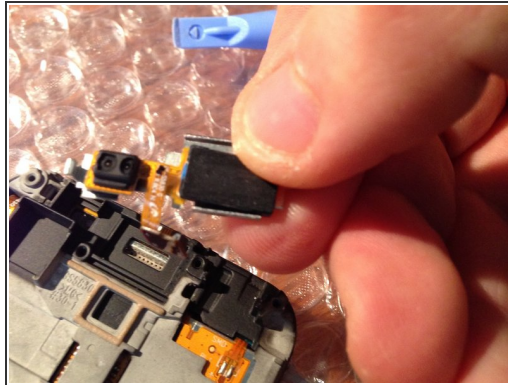
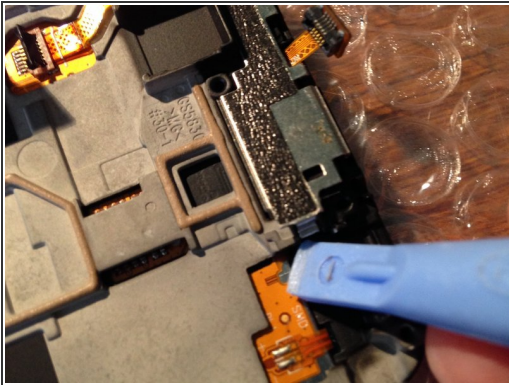
- Lift the logic board from the right side, be careful not cause any damage to gently rotate the LCD connector.
- Now with a plastic tool you can disconnect the LCD connector.

Step 5



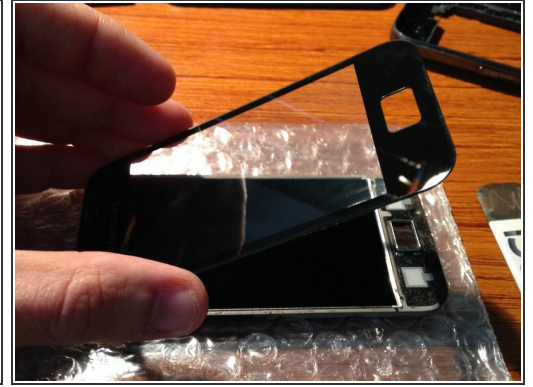
- Remove logic board
- Disconnect speaker and camera with a plastic tool.

Step 6



- Use a plastic tool or something sharp to lift the aluminum protection that serves to fix earpiece speaker and light sensor and remove it.
- After lifting the connector of the touch screen (black tab), lift the cable carefully!

Step 7



- Press the home button to remove it. (This is not fixed, no material).
- Heat the glass lens with a hot air gun, a tool insert after "isesamo" and slowly raise it.
- Remove it.

Step 8



- Disassembly is finished! To assemble, follow the guide from the end point to the initial.

To reassemble your device, follow these instructions in reverse order.