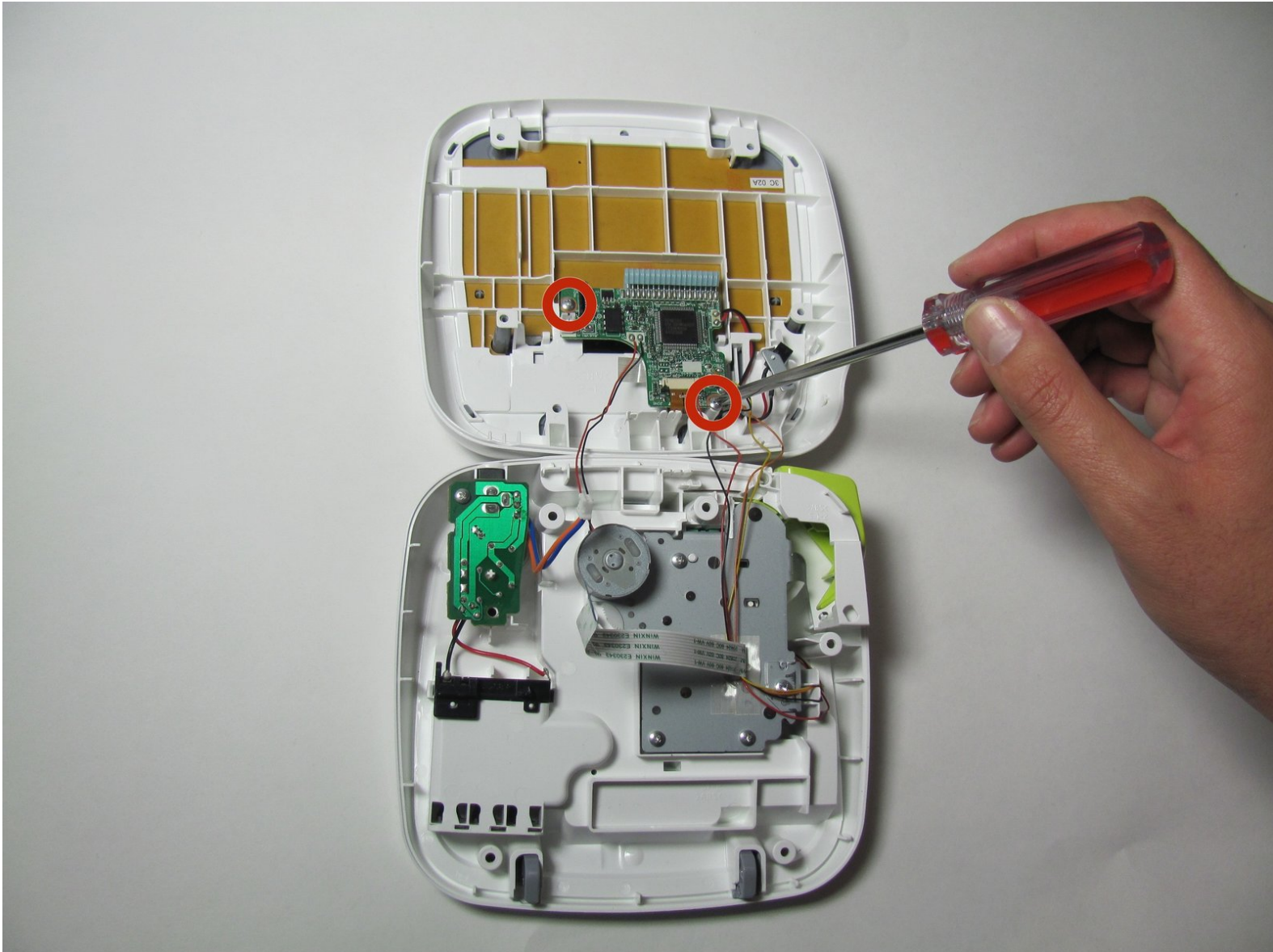




Brother PT-D200 Circuit Board Replacement

Written By: Jeston Mitchell

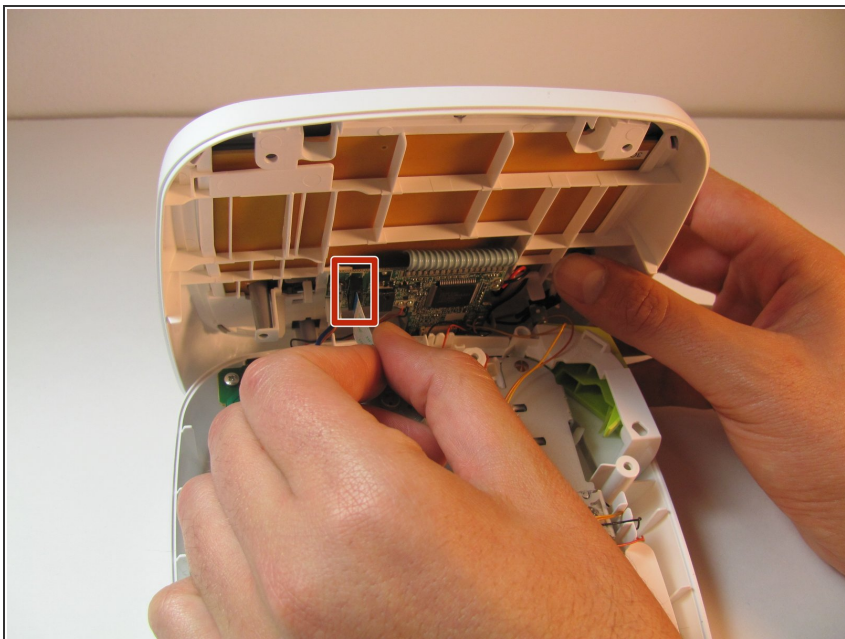




TOOLS:

- [Phillips #2 Screwdriver](#) (1)
-

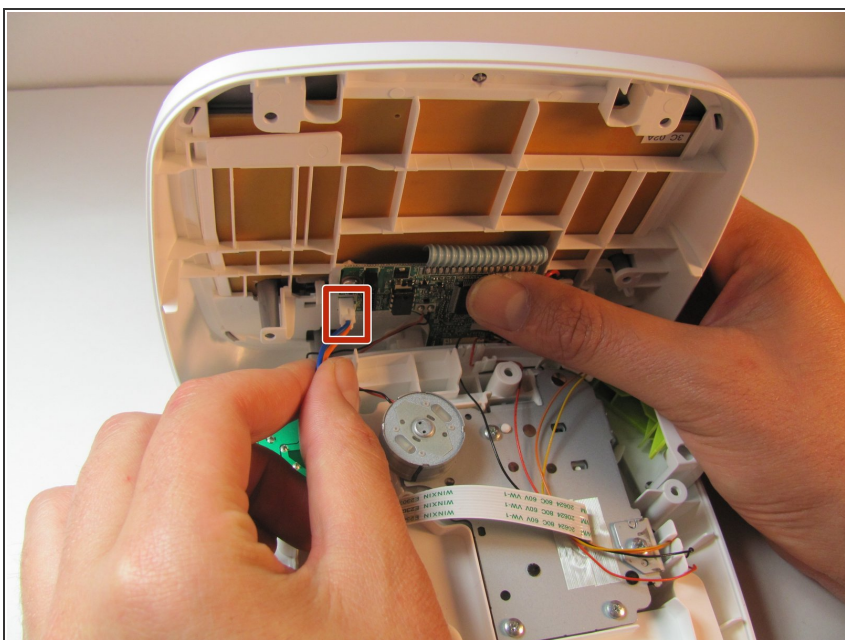
Step 1 — Circuit Board Cables



- Gently pull out the ribbon cable from the circuit board.

⚠ The ribbon cable is very fragile.

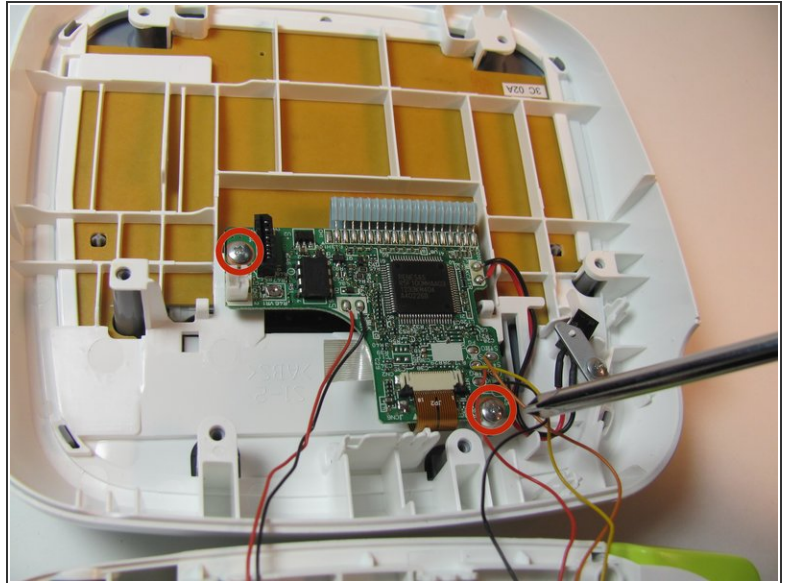
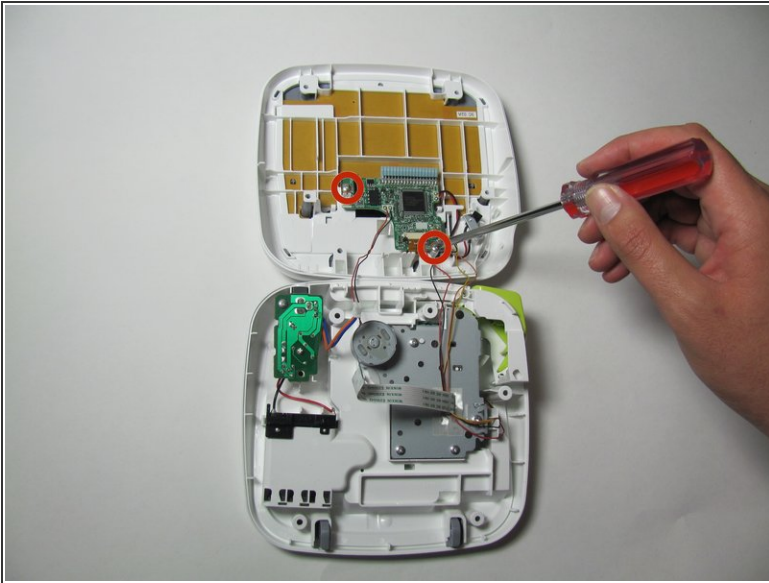
Step 2



- Remove two-pin plastic connector from the circuit board.

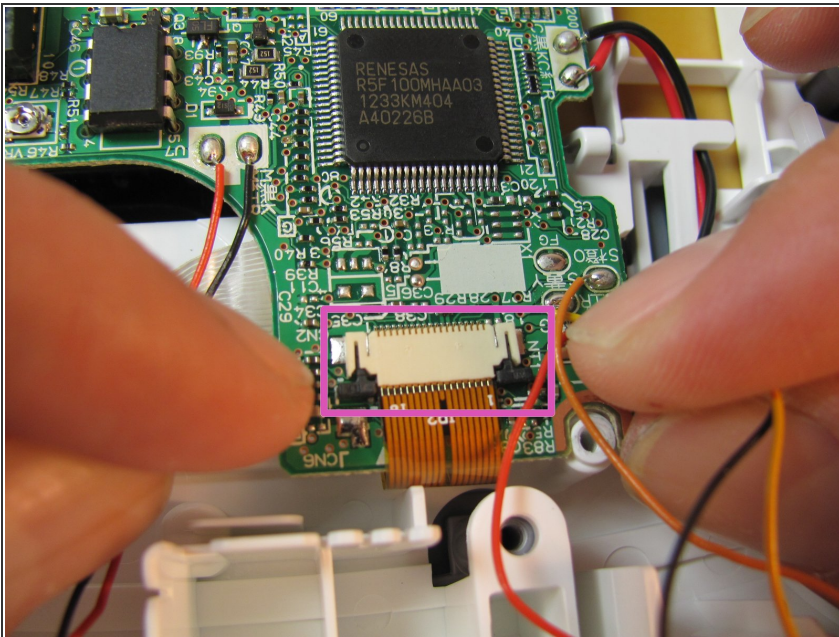
⚠ Gently pull the two-pin connector from the circuit board to avoid damaging the board.

Step 3 — Circuit Board



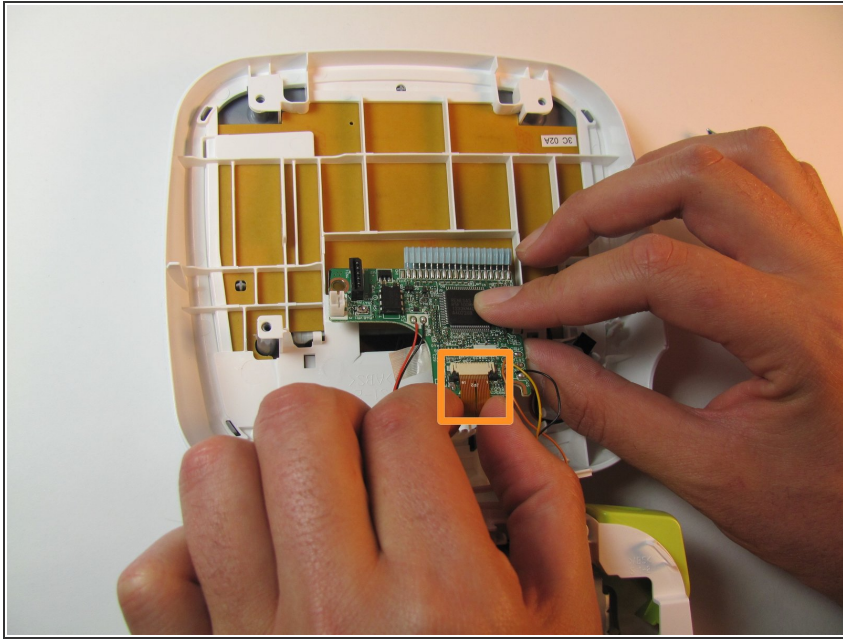
- Remove the two 3/16" screws from the circuit board using the Helping Hand 1/4" screwdriver.

Step 4



- Release the two black clips that hold the LCD cable ribbon in place. To release, pull the clips towards the ribbon.

Step 5



- Disconnect the LCD ribbon cable from the circuit board.

To reassemble your device, follow these instructions in reverse order.