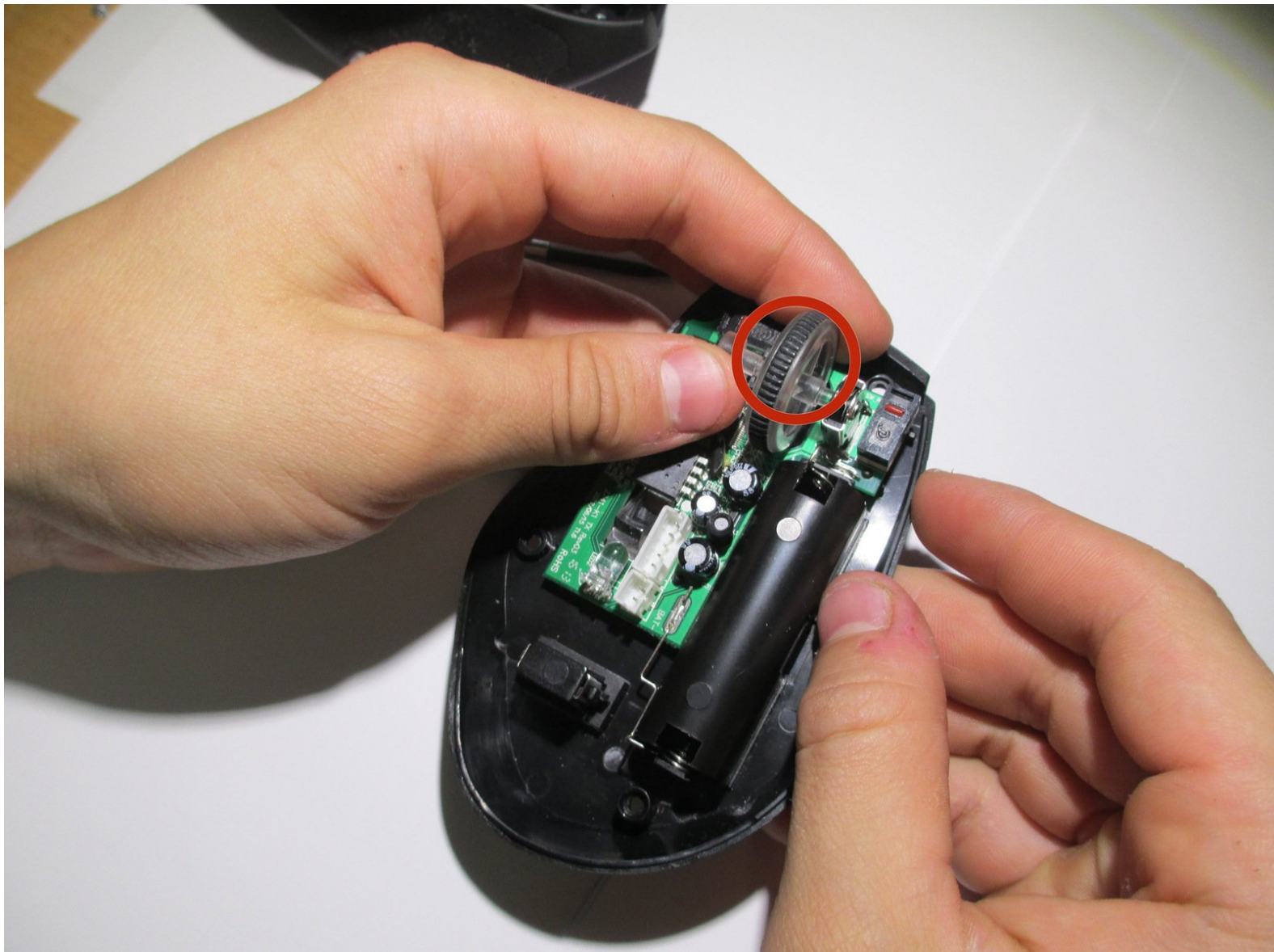




# Anker 2.4G Wireless Mouse Scroll Wheel Replacement

This guide covers the replacement of the scroll wheel of an Anker 2.4 G Wireless Mouse.

Written By: Vincent Lee



## INTRODUCTION

If your Anker 2.4 G Wireless Mouse scroll wheel is not working properly it may need to be cleaned or replaced. Over time dust can build-up in the mouse causing issues with scrolling, this can be resolved with a simple clean. If there is hardware damage, the scroll wheel may need to be replaced.

This guide will show you how to disassemble your Anker 2.4 G Wireless Mouse to repair the scroll wheel with little to no experience required.

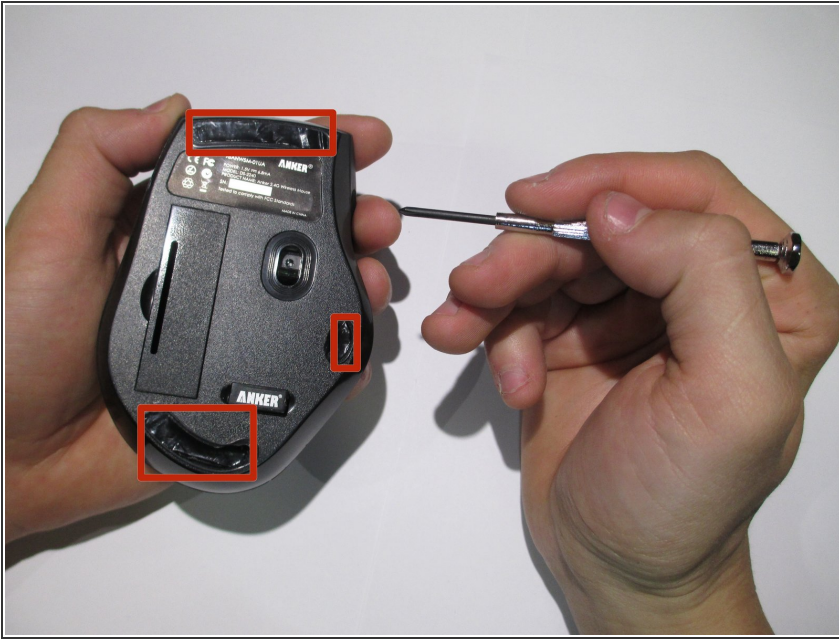
For help with desoldering, see: [How To Solder and Desolder Connections](#)



### TOOLS:

- [Phillips #0 Screwdriver](#) (1)
  - [Soldering Iron](#) (1)
  - [Desoldering Braid](#) (1)
  - [Q-Tips](#) (1)
-

## Step 1 — Scroll Wheel



- Remove the stickers from the bottom of the mouse to have access to the screws, The stickers are shown in the picture by the red rectangles.

## Step 2



- Use a Phillips #00 to remove the 4 screws shown by the red circles in the picture.



### Step 3



- Using a plastic opening tool or spudger, on the center of the mouse, separate the upper and lower board.

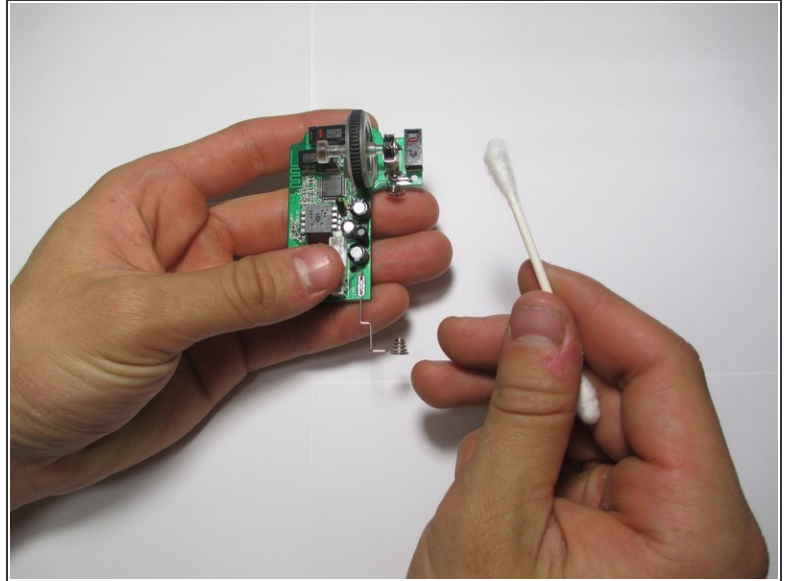
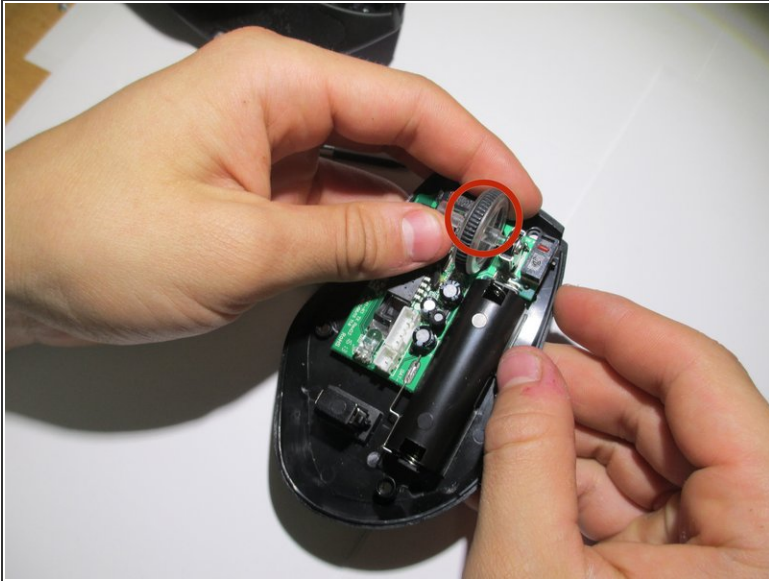
### Step 4



- Remove the wires from the white crimp headers, separating the upper and lower housing units of the mouse. Avoid pulling the wires too hard to prevent them from breaking.

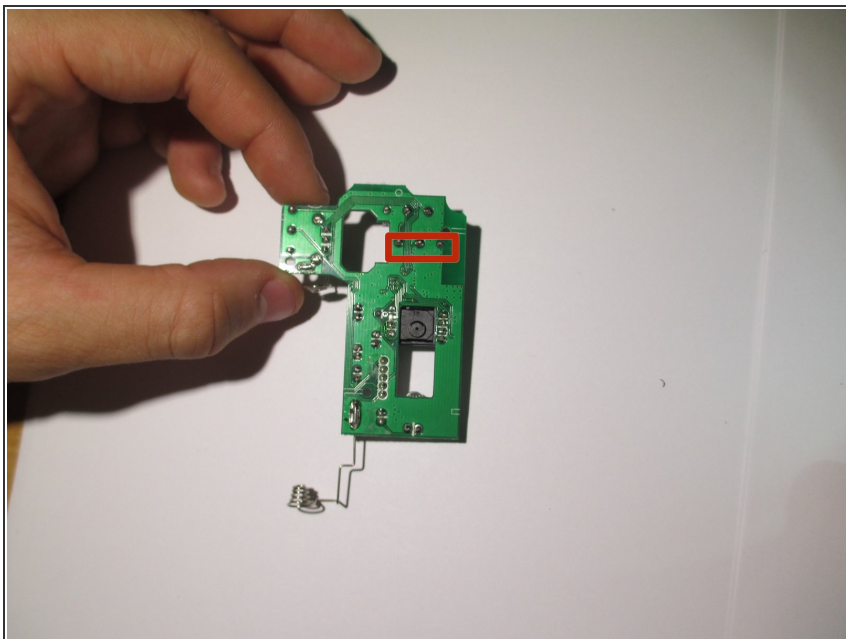
⚠ Don't pull the wires too hard, as they might break.

## Step 5



- Pull the scroll wheel out parallel to the board.
- ⓘ This may take some force to remove. Pull the scroll wheel out parallel to the board rather than perpendicular to it.
- Replace/clean if needed.
- If your mouse still does not work after this step, then continue to the next instruction.

## Step 6



- Desolder the three pins, then solder in the replacement part.

To reassemble your device, follow these instructions in reverse order.