



RCA RC2012 Alarm Clock Radio Teardown

Step-by-step instructional guide to tearing down an RC2012 alarm clock.

Written By: Kenneth Lim



INTRODUCTION

THE RCA RC2012 is a basic alarm clock radio that requires a screwdriver and standard prying tools for tear down.



TOOLS:

- [Phillips #2 Screwdriver](#) (1)
- [Spudger](#) (1)



PARTS:

- [RCA RC2012](#) (1)

Step 1 — RCA RC2012 Alarm Clock Radio Teardown



- Fully assembled RC2012 alarm clock radio.

Step 2



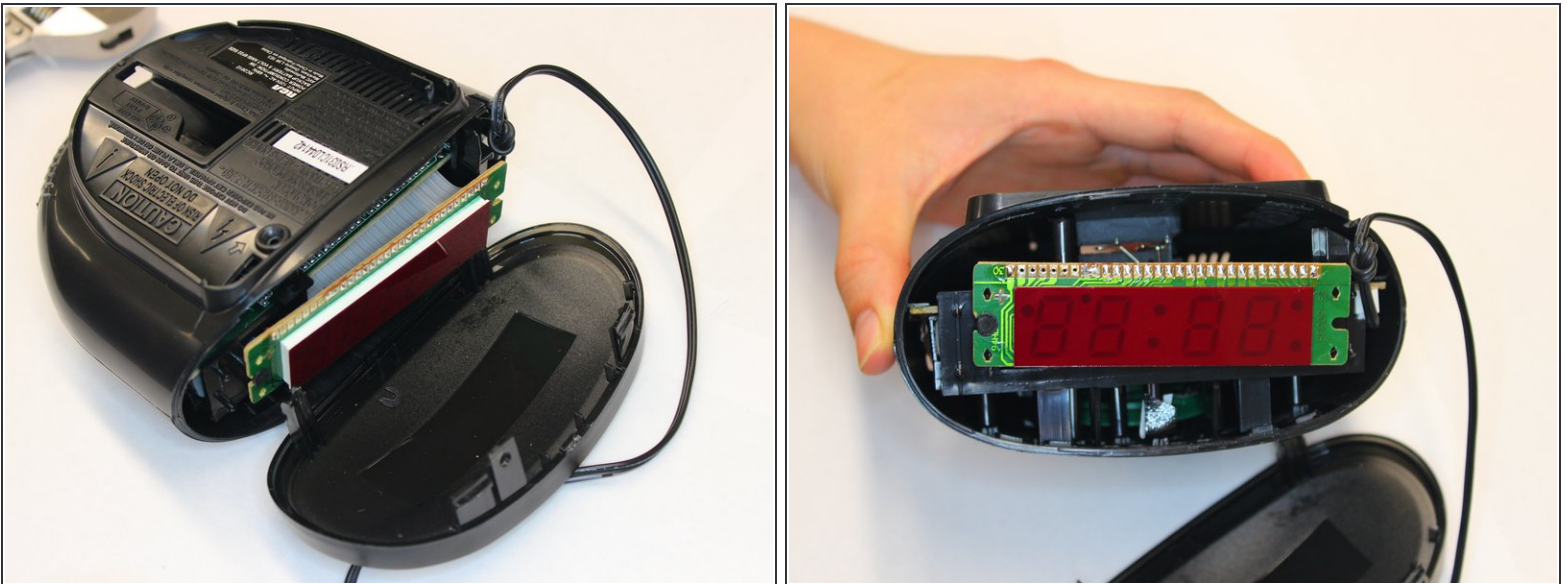
- Remove the single screw from the bottom of the alarm clock radio with a Phillips head screwdriver.

Step 3



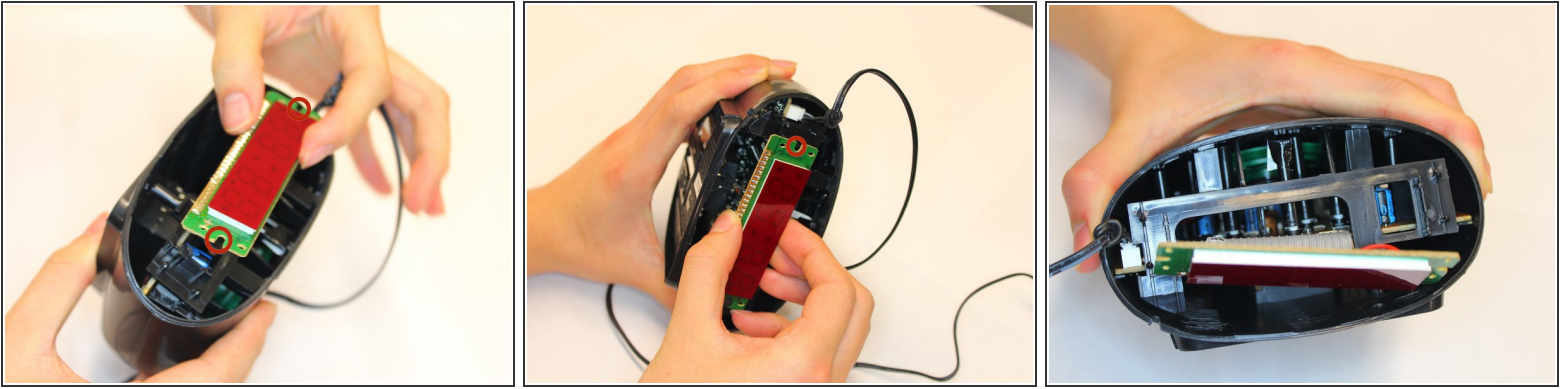
- Pry the alarm clock's front panel by applying downward and forward pressure at the two tabs on the edges of the alarm clock. Be careful to not apply too much pressure as the tabs are fragile.

Step 4



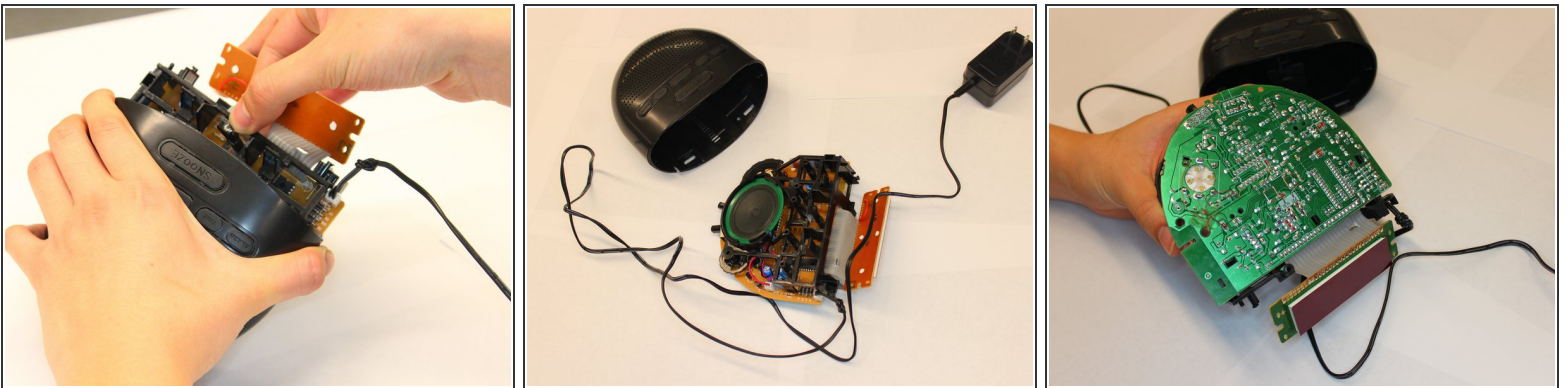
- Upon prying the front panel, take care to not puncture the grey shielded connectors for the LCD module.

Step 5



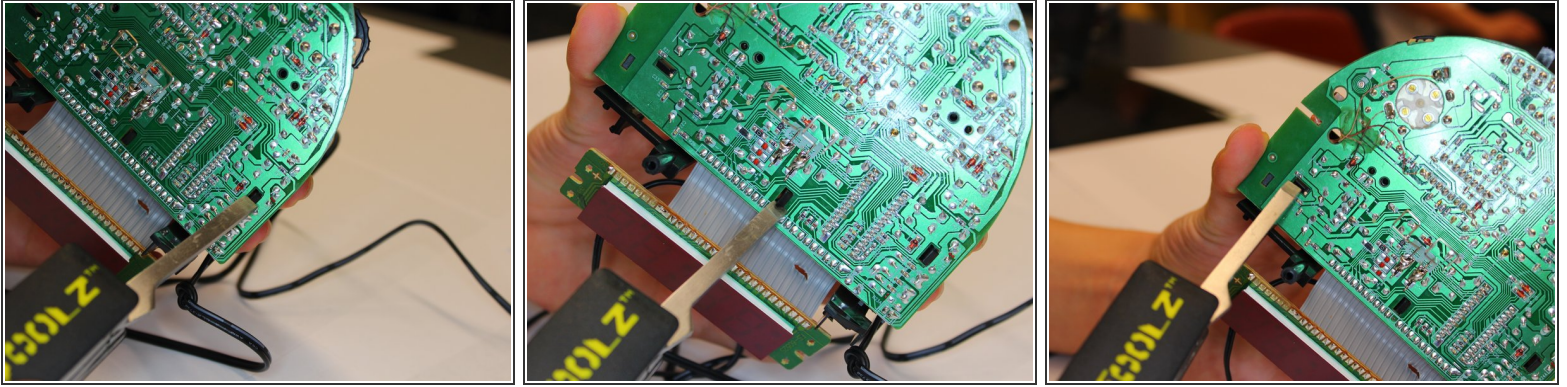
- Gently, pry apart the LCD module from the alarm clock. There are two tabs at the edge of the LCD module (marked in red) that hold it in place.
- Using two fingers work the module back and forth until it separates from the plastic tabs. Be careful of snapping off the plastic tab as this would prevent the LCD module from fitting back in place.

Step 6



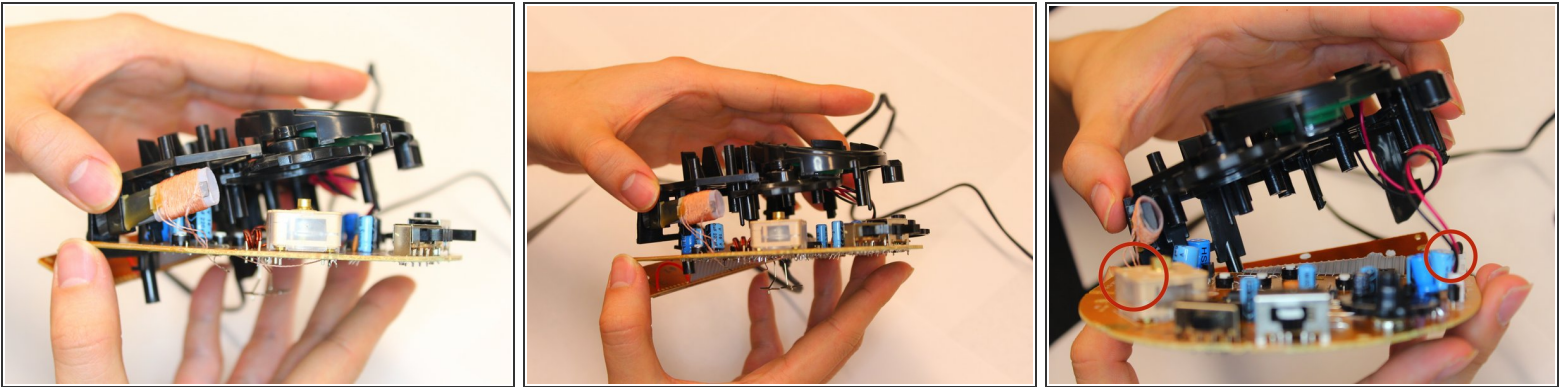
- To remove the printer circuit board from the plastic housing, apply firm pressure to both sides of the housing.
- The PCB is supported by a plastic chassis. Grab the the plastic chassis with one hand while applying pressure to both sides of the alarm clock housing with the other hand.
- Pull out the PCB from the plastic housing.

Step 7



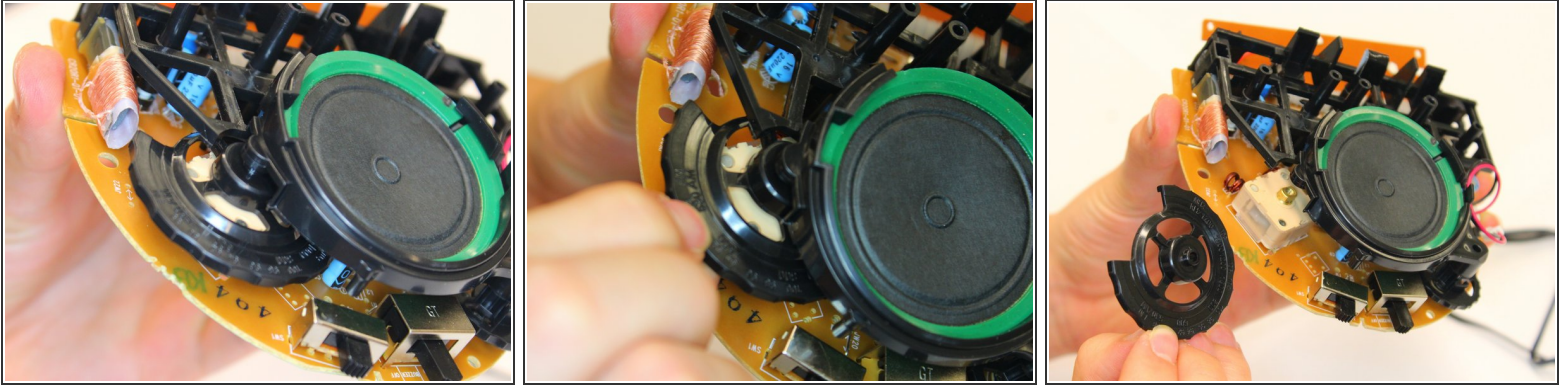
- The bottom side of the PCB contains three plastic tabs that hold the PCB and plastic chassis together.
- With a prying tool, gently push out each of the three tabs.

Step 8



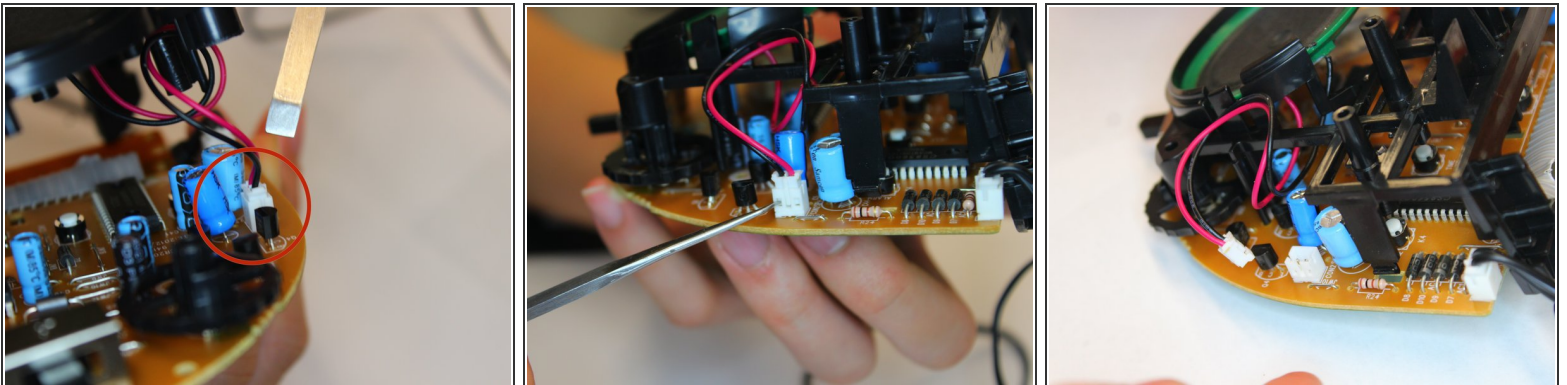
- After removing the plastic tabs from under the PCB, carefully lift the plastic chassis away from the PCB.
- Do not use too much force when pulling apart the chassis from the PCB, there are two sets of two pin connectors and 1 wound up wire for the antenna that remains attached between the chassis and PCB.

Step 9



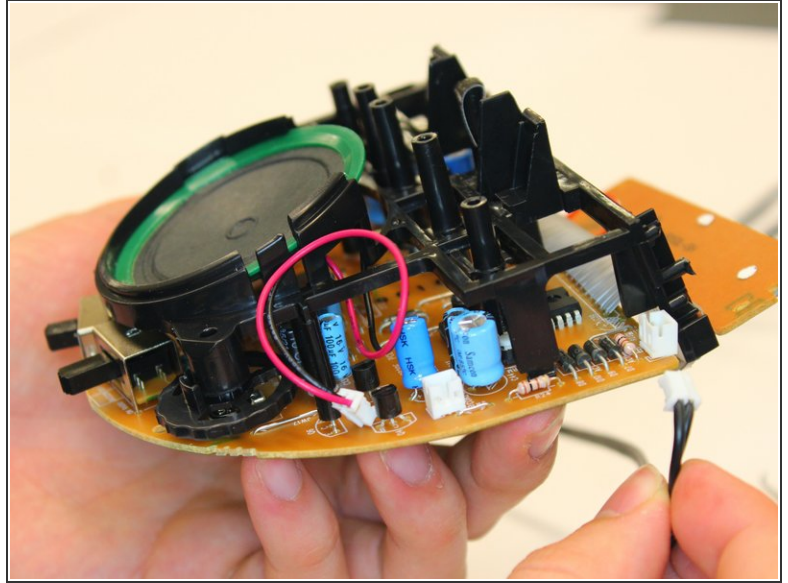
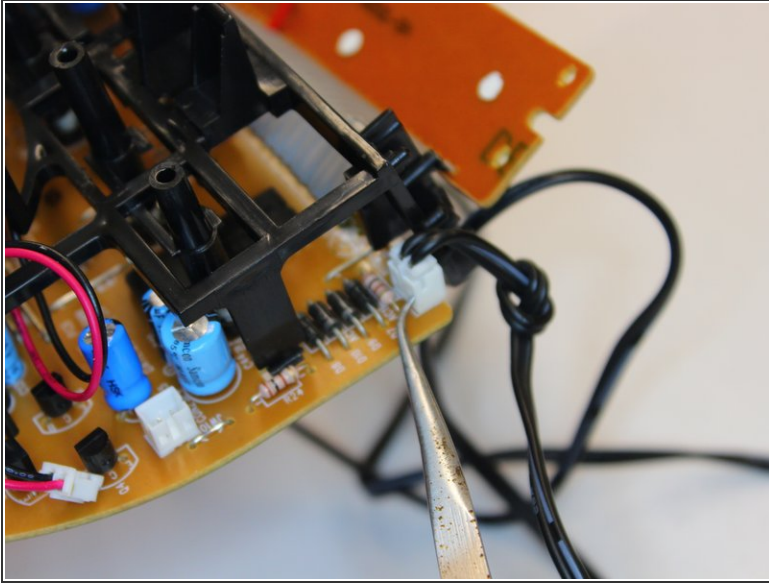
- There is a plastic dial between the chassis and the PCB that controls the frequency of the radio.
- To remove the dial, lift the chassis up slightly and simply push up to remove the dial from its fitting.

Step 10



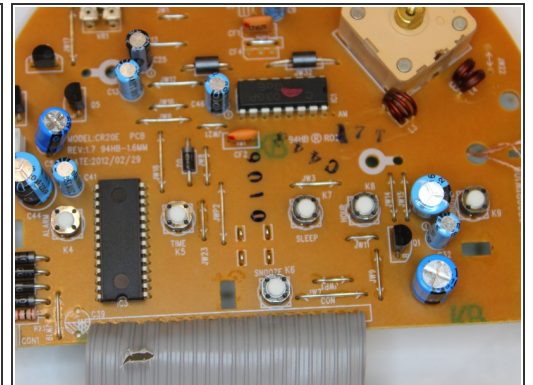
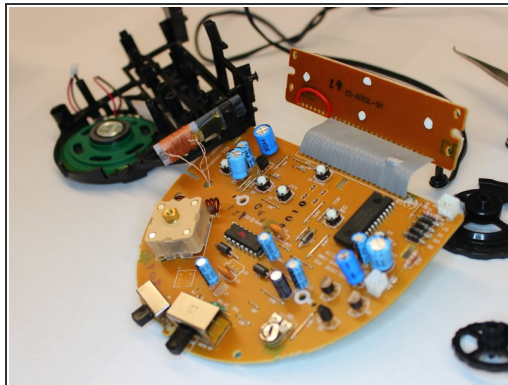
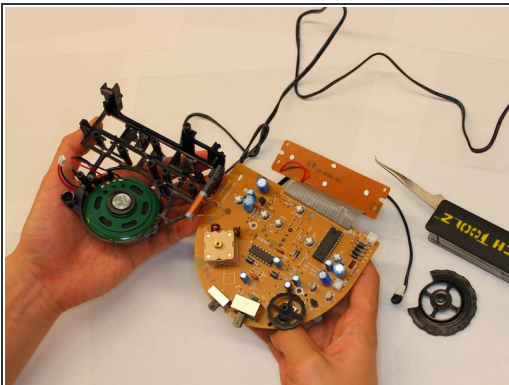
- There is a two pin connector that connects the speakers on the chassis to the PCB.
- With a small, pointed tool push the two tabs on the two pin connector holding the wire crimps in place. While applying pressure to the two tabs, gently pull the connector wires until the male connector separates from the female counterpart.

Step 11



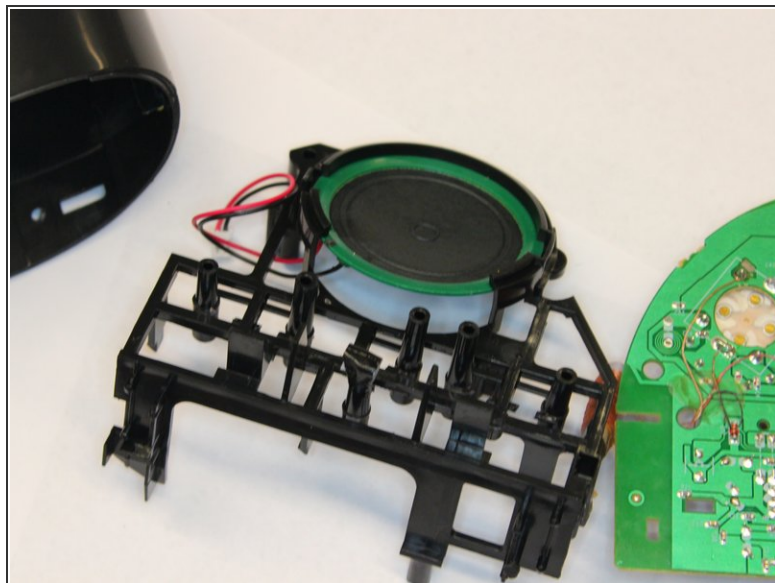
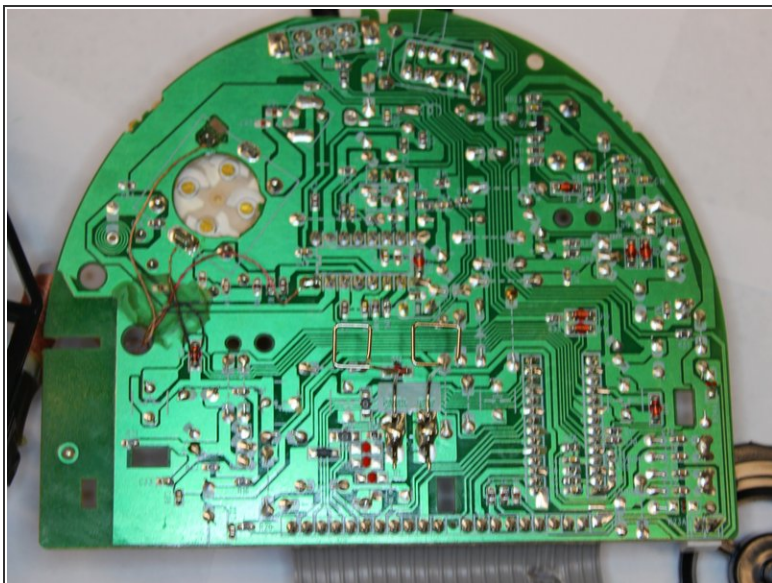
- There is a two pin connector on the chassis to the PCB that provides power from the 120VAC adapter.
- With a small, pointed tool push the two tabs on the two pin connector holding the wire crimps in place. While applying pressure to the two tabs, gently pull the connector wires until the male connector separates from the female counterpart.

Step 12



- Complete view of the topside of the PCB isolated from the plastic chassis.

Step 13



- Complete view of the underside of the PCB and the provided speaker.

To reassemble your device, follow these instructions in reverse order.