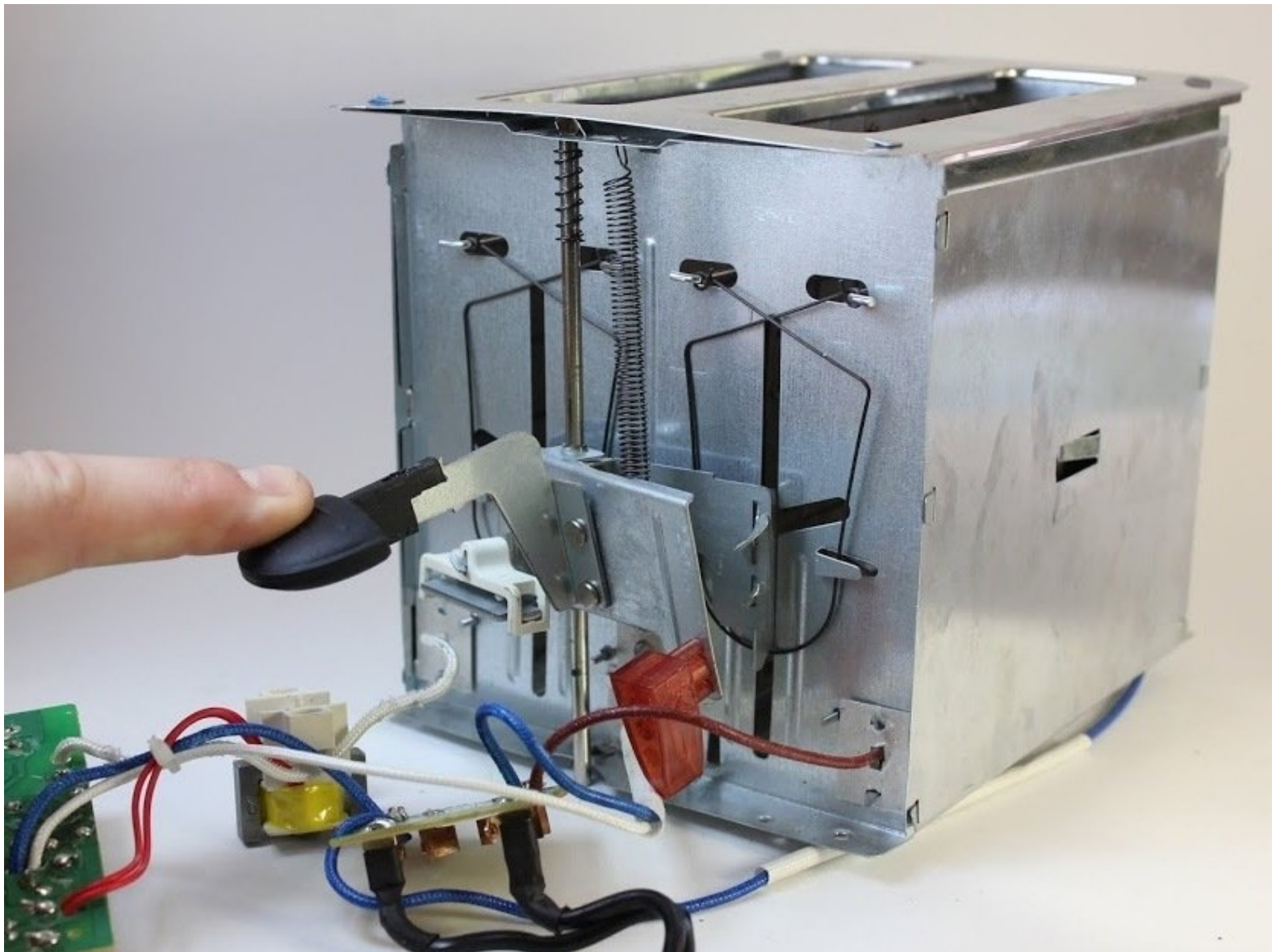




Professional Series PS77401 Lever Spring Replacement

In this guide we will open up the toaster and replace the lever spring. This will allow the toaster lever to smoothly lock in and release when it is in use.

Written By: David Acosta



INTRODUCTION

A damaged spring can lead to issues with the toaster lever being fully locked in and released. When the lever is released it should be able to move freely in an upward direction. When the lever is being pushed down, it should move smoothly with slight resistance from the spring.



TOOLS:

- [Phillips #2 Screwdriver](#) (1)
- [T7 Torx Screwdriver](#) (1)



PARTS:

- [Metal Coiled Spring](#) (1)

Step 1 — Shell



- ★ Make sure that the toaster is unplugged before attempting any sort of disassembly!

Step 2



- Grip the black plastic lever nub firmly and *carefully* remove it from the metal lever. Use one hand to hold the toaster in place while you pull the lever nub with the other.

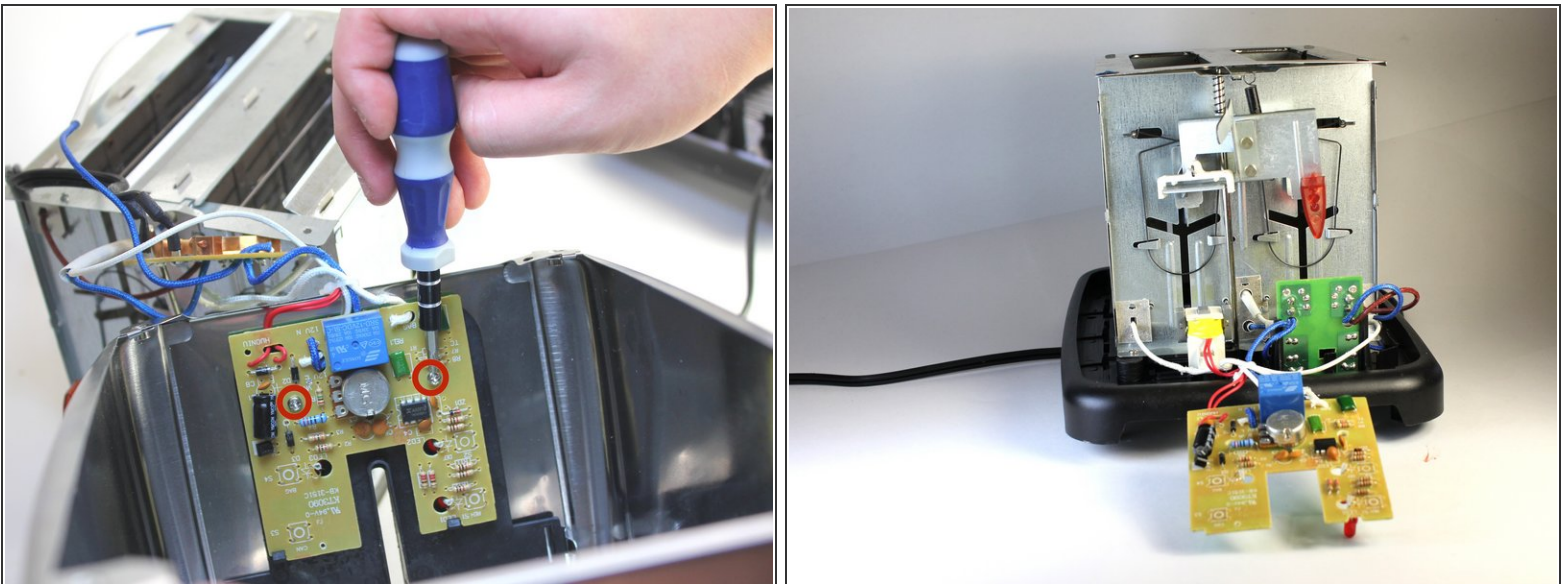
⚠ If this is the first time detaching this piece, it will take some effort to remove. Be careful as pulling too hard can cause damage to the inner lever mechanism.

Step 3



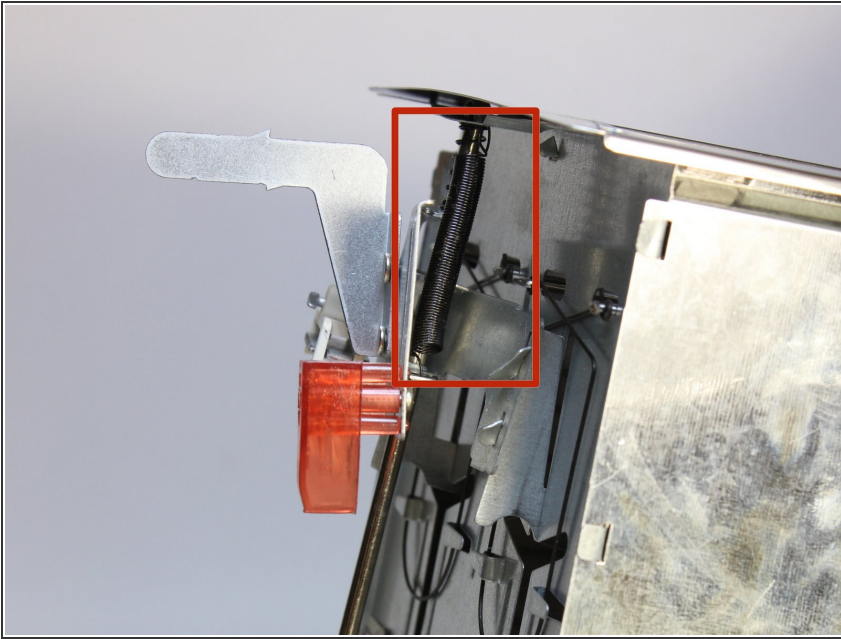
- Flipping the toaster upside down, use a T7 Torx Screwdriver to remove the four 10mm screws that keep the outer shell attached.
 - Flip the toaster back over and slide off the shell making sure to slip the toaster lever (now without the black plastic nub) through the lever opening in the shell.
- i** The outer shell should now only be connected by its internal wiring.

Step 4



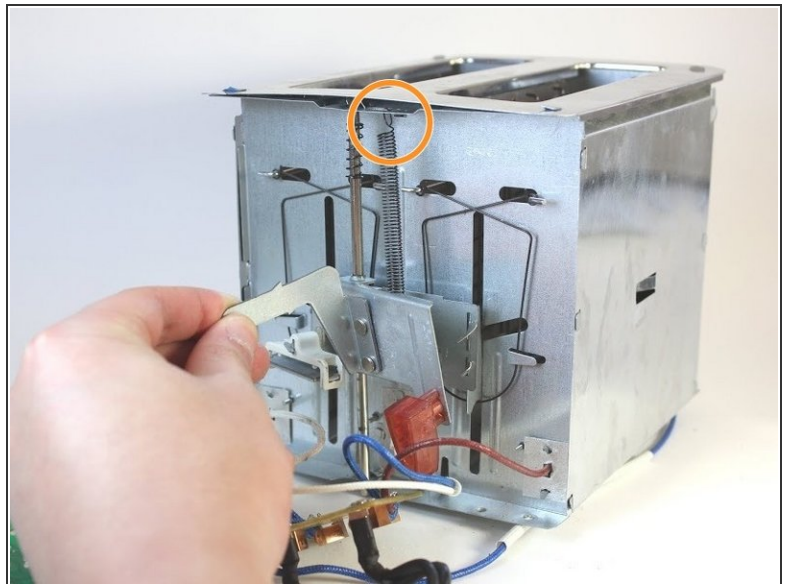
- Locate and remove the two 8mm screws that attach the circuit board (located inside of the shell) from the shell itself using the Phillips #2 screwdriver.
- i** The shell should now be completely separated from the rest of the toaster.

Step 5 — Lever Spring



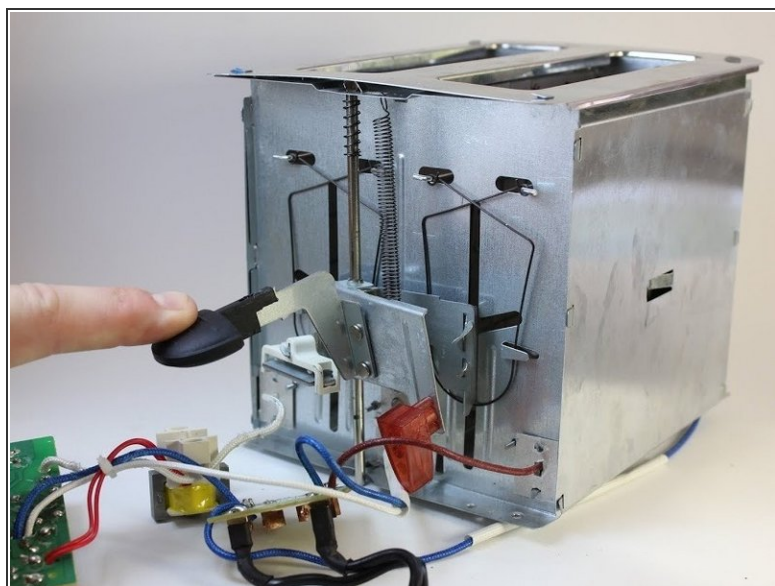
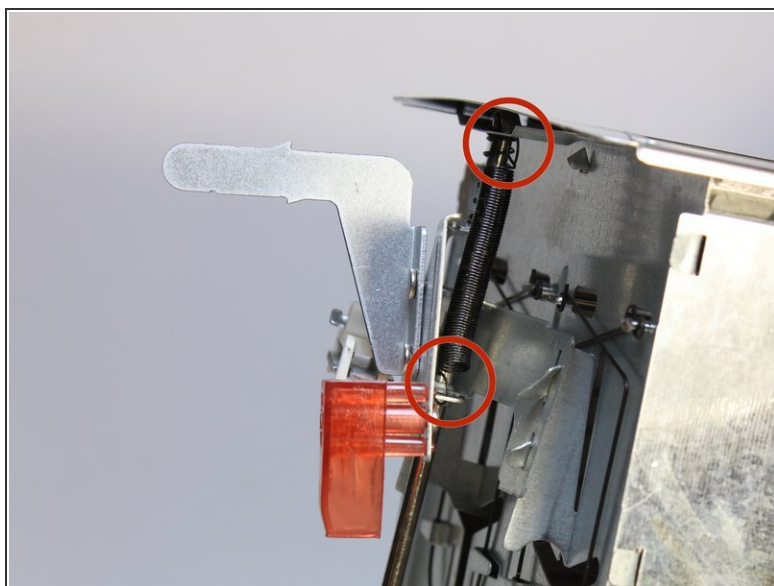
- Locate your damaged spring that holds the toaster lever in place.
- ⓘ The spring in the picture is not damaged.

Step 6



- Disconnect the bottom part of the damaged spring from the lever first.
- Then disconnect the top part of the damaged spring from the chassis.

Step 7



- Attach the new spring in the same spots that the damaged spring was removed from.
- ☑ Check to make sure that the new spring allows the lever to move down with slight resistance and that it pops back up after being released.

To reassemble your device, follow these instructions in reverse order.