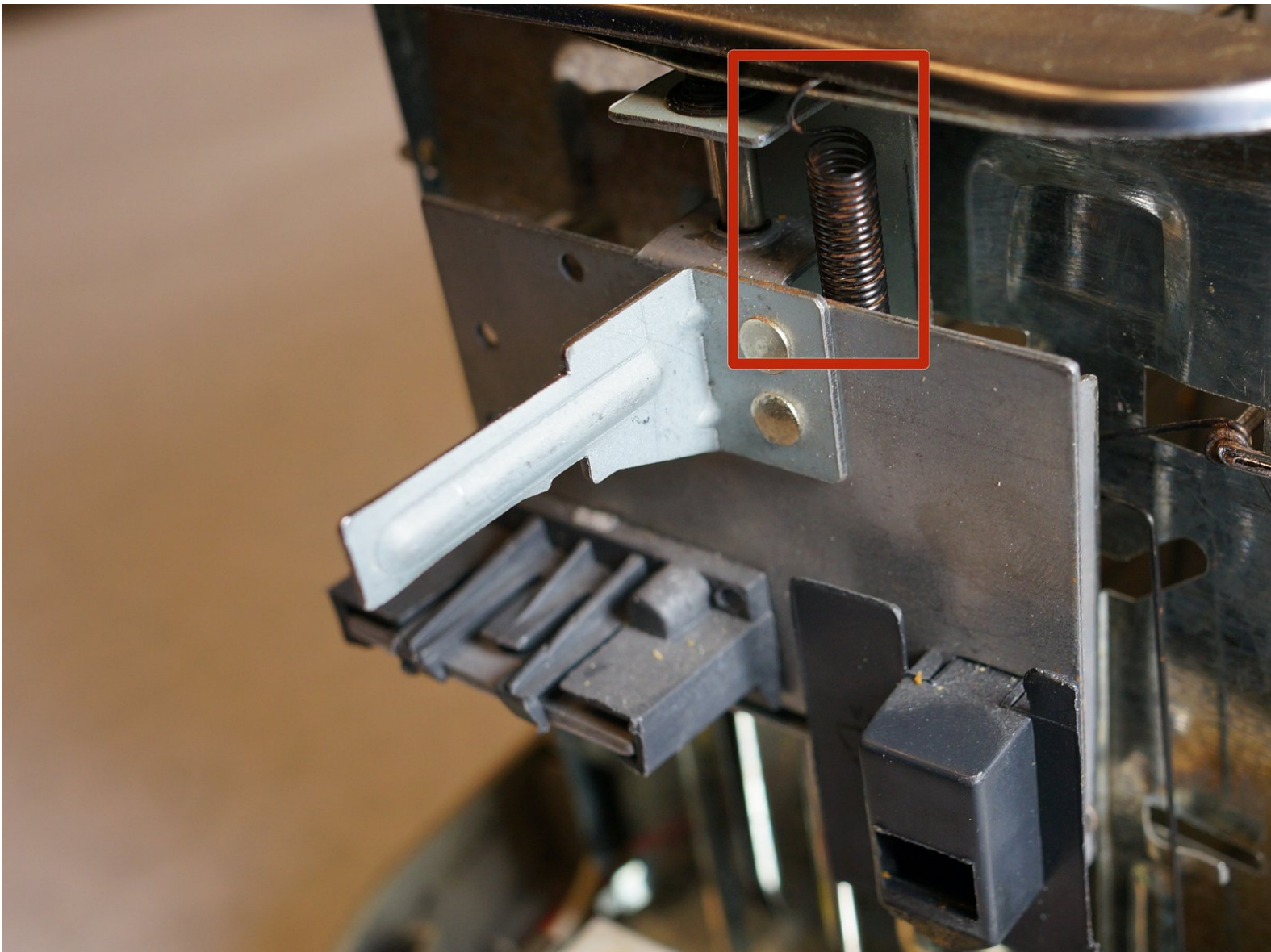




Oster 6329 Bread Grabber Spring Replacement

This guide will walk you through replacing the spring that closes the toaster carriage.

Written By: Isaac Williams



INTRODUCTION

This repair is challenging because the wire that acts as the spring is difficult to bend into the correct shape.



TOOLS:

- [Phillips #1 Screwdriver](#) (1)
 - [1 x Large Needle Nose Pliers](#) (1)
-

Step 1 — Outer Shell Removal



- Using the Phillips-head #2 screwdriver, unscrew the three 1cm Phillips-head screws on the plastic base of the toaster to separate the outer metal shell from the plastic base.

Step 2



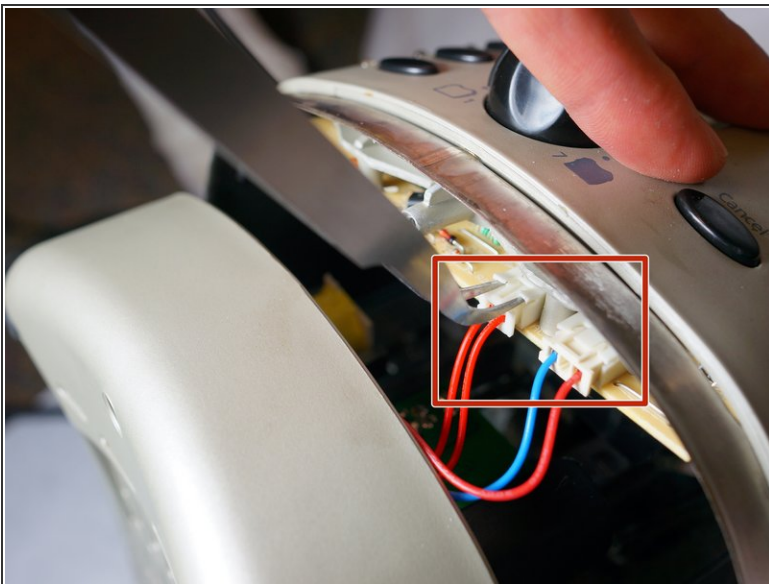
- Push the plastic push-down handle down and pull the plastic handle straight from metal arm.

Step 3



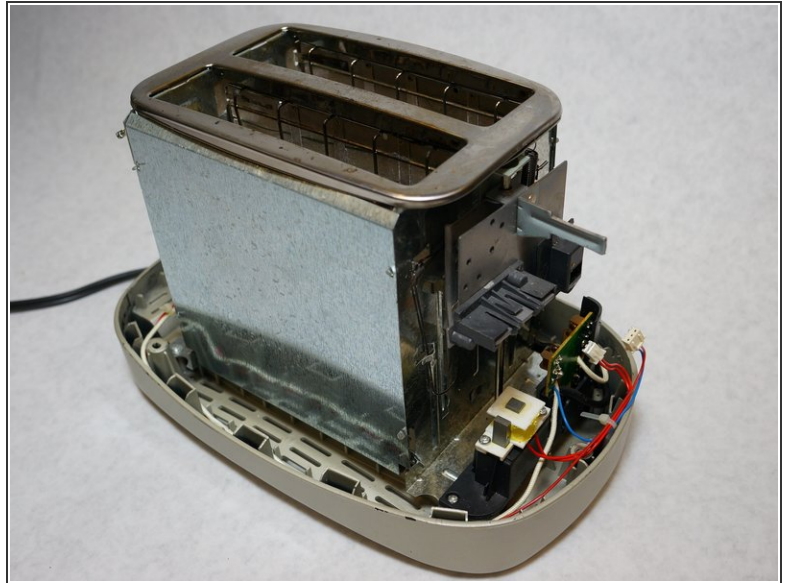
- Loosen the outer metal shell from the plastic base by holding the plastic base while pulling up on the metal shell.
- ⓘ Only lift the outer shell a little so as not to disconnect the cables that connect the circuit board.

Step 4



- Disconnect the cable clips from the circuit board using the tweezers to free the outer metal shell from the plastic base.

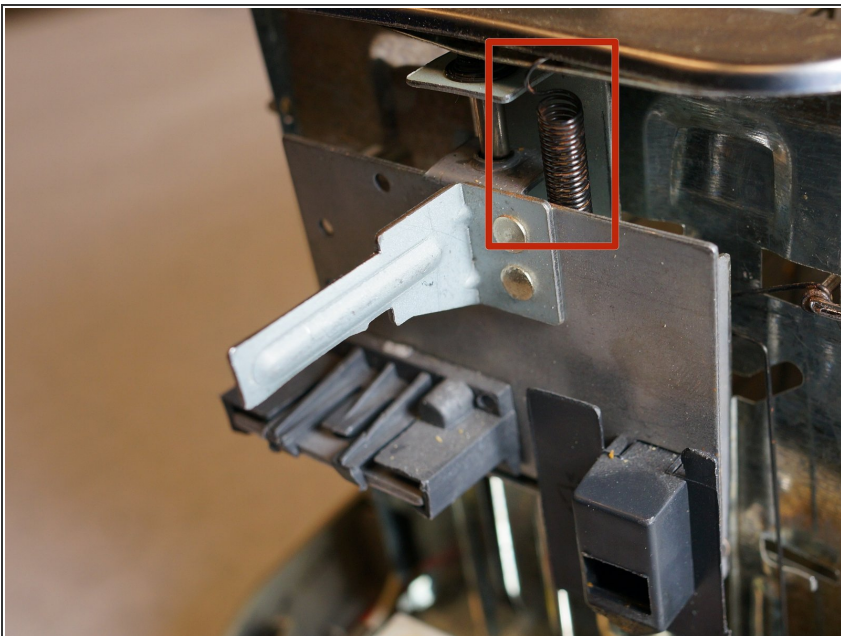
Step 5



- Lift the top outer metal shell.

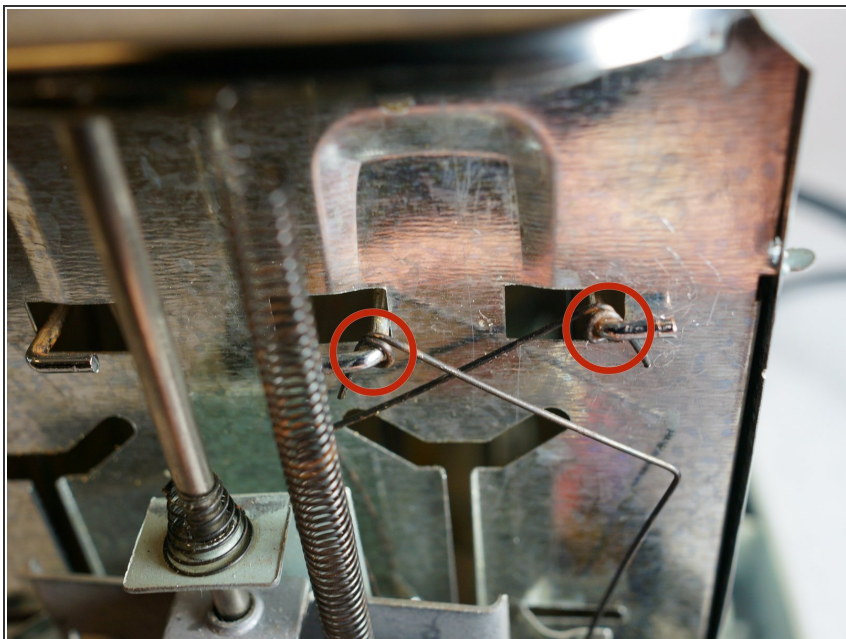
⚠ Carefully lift the outer metal shell at an angle so as not to damage the components in the front of the toaster.

Step 6 — Bread Grabber Spring



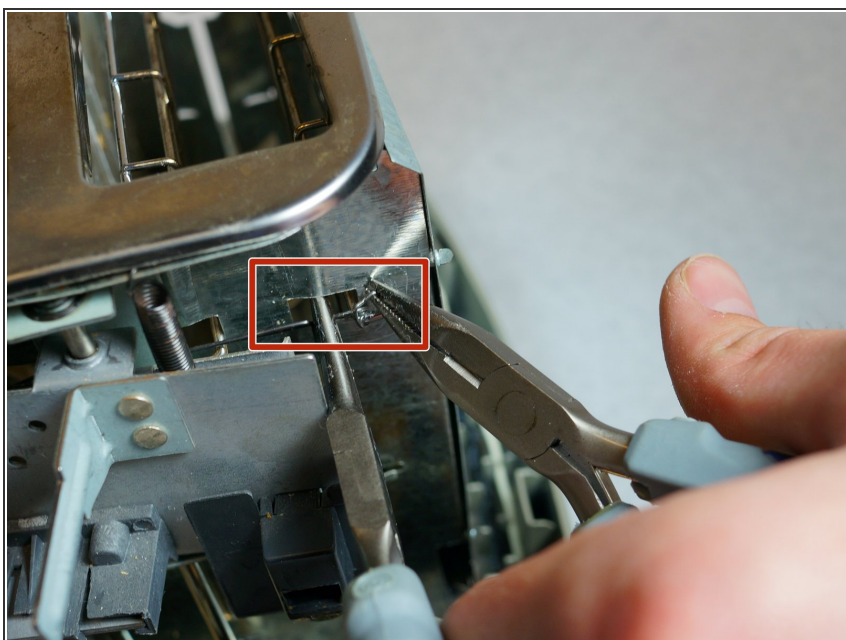
- Press down on the toaster handle to access to the grabber spring located behind the large metal plate.

Step 7



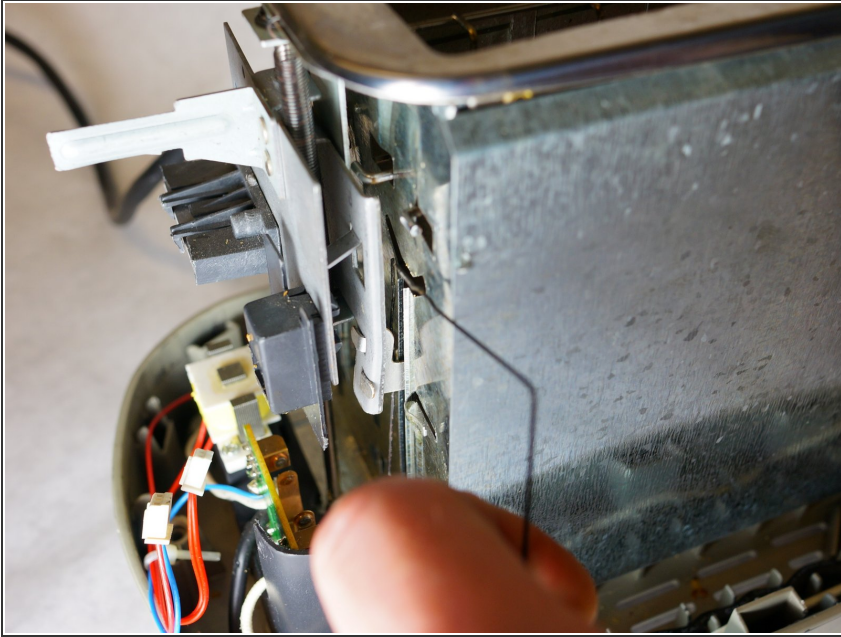
- Locate the grabber spring.

Step 8



- Use the large needle nose pliers to unwind the grabber spring from one side of the carriage to remove.
- Repeat this step for the opposite side.

Step 9



- Remove the old spring from the toaster unit to insert new.

To reassemble your device, follow these instructions in reverse order.