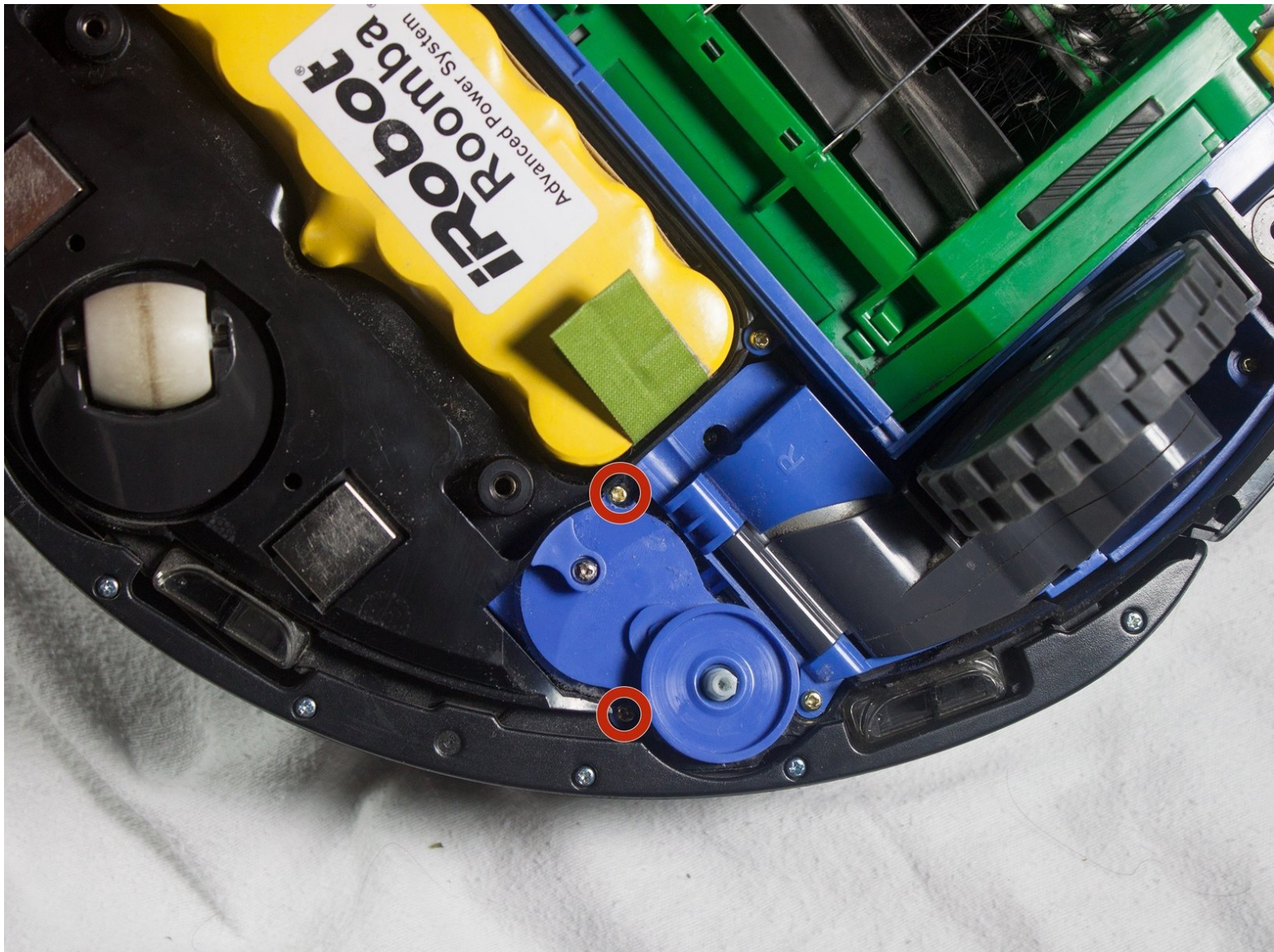




iRobot Roomba 551 Side Brush Motor Replacement

Replace the side brush motor on your Roomba.

Written By: Aaron Jacobs



INTRODUCTION

This guide explains how to remove the side brush motor from your Roomba.



TOOLS:

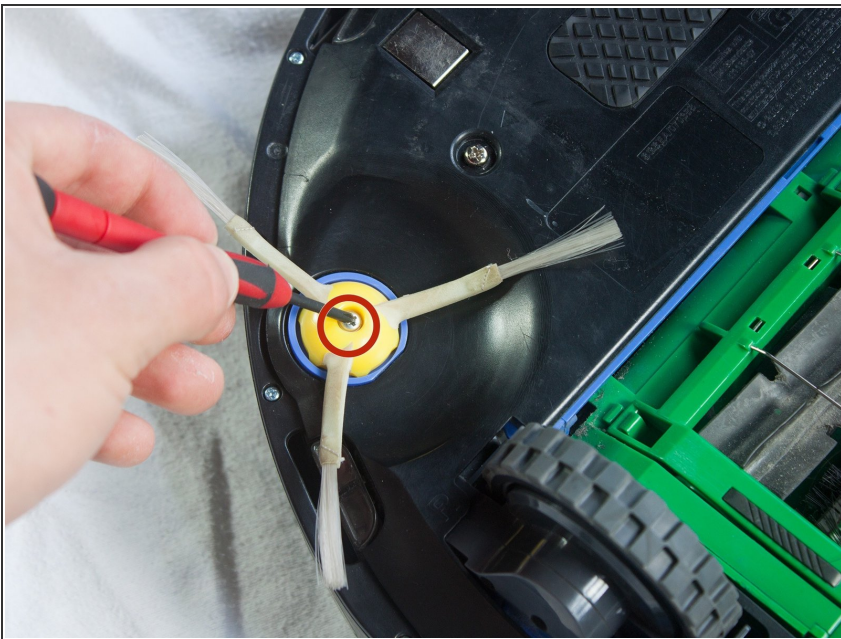
- [Phillips #1 Screwdriver](#) (1)
 - [Phillips #2 Screwdriver](#) (1)
-

Step 1 — Side Brush



- Place your Roomba upside-down on a hard surface.

Step 2



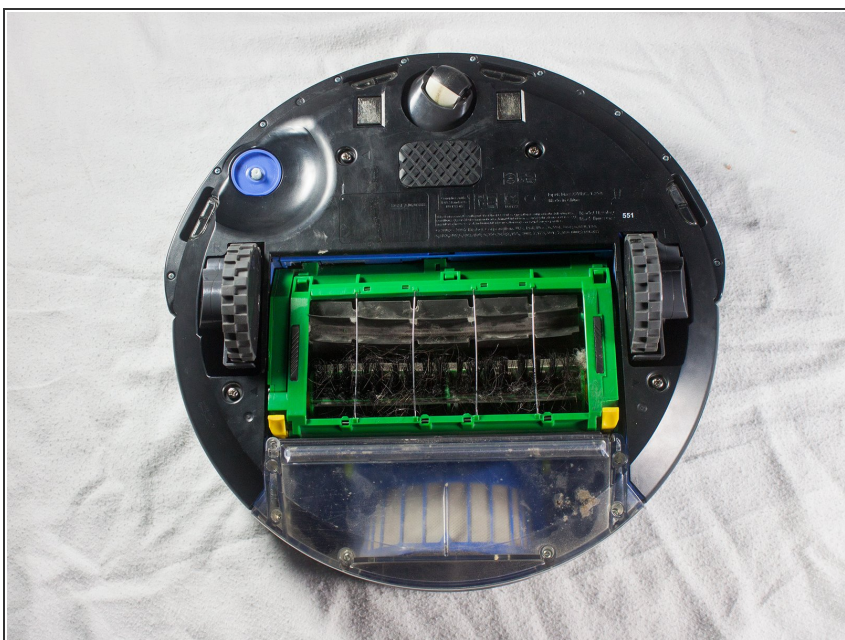
- While holding the side brush in place, use a Phillips #1 screwdriver to remove the 4.5mm screw from the center of the brush.

Step 3



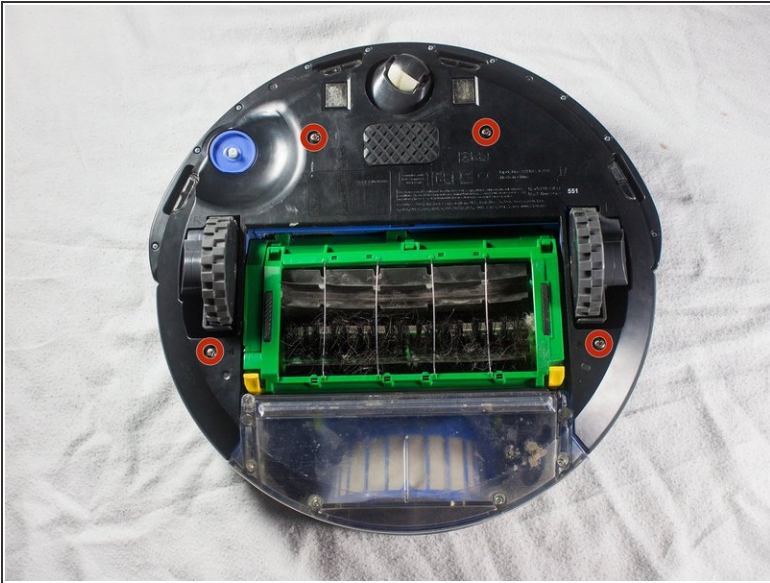
- Gently pull upwards on the brush to remove it.

Step 4 — Bottom Plate



- Rotate the Roomba upside-down so the bottom is facing towards you.

Step 5



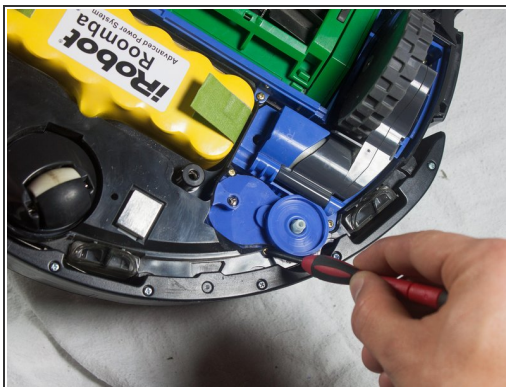
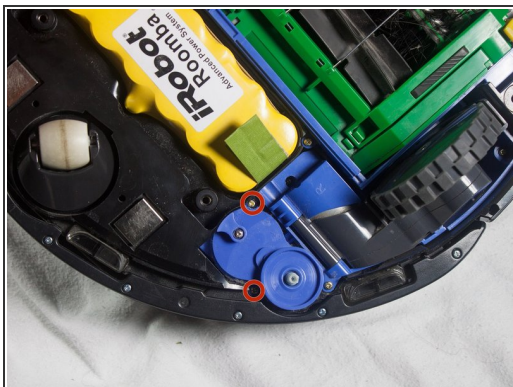
- Using a Phillips #2 screwdriver, remove the captive screws that hold the bottom plate in place.

Step 6



- Carefully lift the bottom plate.
- ⚠ The battery is only secured in place by the bottom plate, and may fall out once the bottom plate is removed.

Step 7 — Side Brush Motor



- Use a Phillips #1 screwdriver to remove the two captive mounting screws on the side wheel motor assembly.

Step 8



- Gently pull on motor assembly to remove.

To reassemble your device, follow these instructions in reverse order.