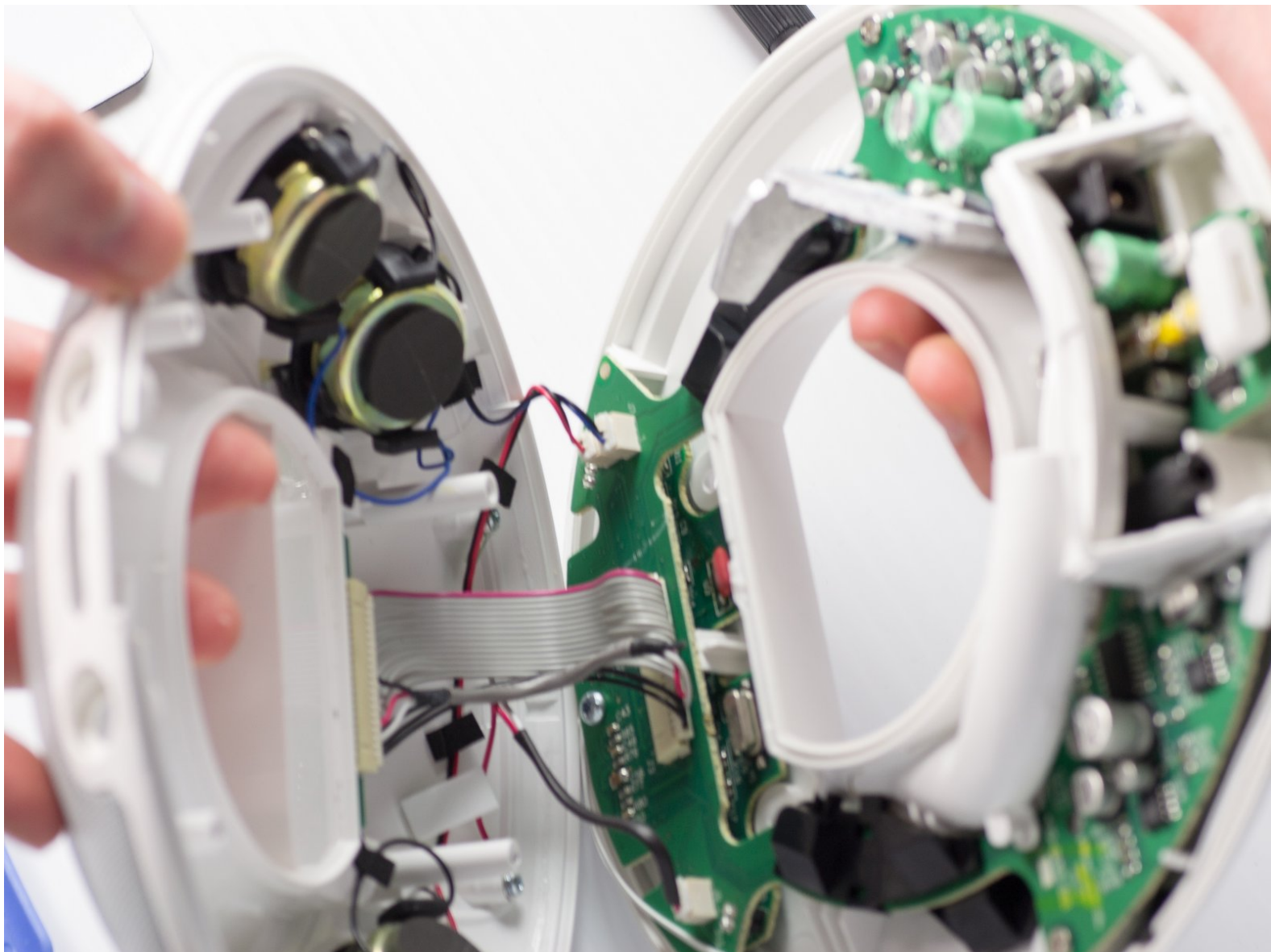




Cracking the Case

This is a prerequisite guide for several other JBL On Stage II item-repair walkthroughs. It will direct users through the process of taking the outer shell apart and getting to the inner workings of the device.

Written By: Jared Everingham



INTRODUCTION

This guide is not for any specific repair, rather it is for cracking the device open in order to diagnose and treat your its inefficiencies.



TOOLS:

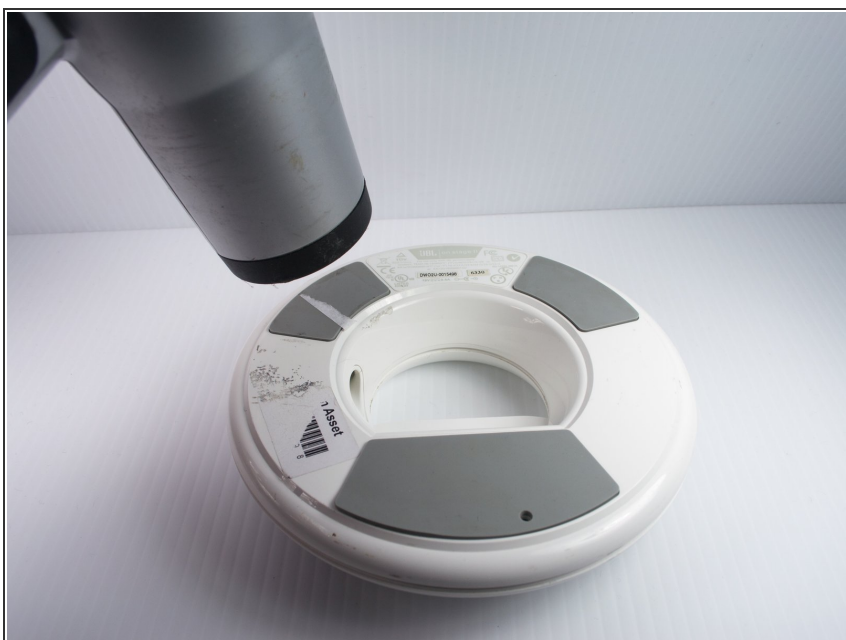
- [T-10 Torx Screwdriver](#) (1)
 - [Heat Gun](#) (1)
-

Step 1 — Cracking the Case



- Turn the device upside down so that the three rubber pads are facing up.

Step 2



- Use a heat gun (set to low) to apply heat to one of the rubber pads until you can easily remove the pad. This step takes around 5-7 minutes.

Step 3



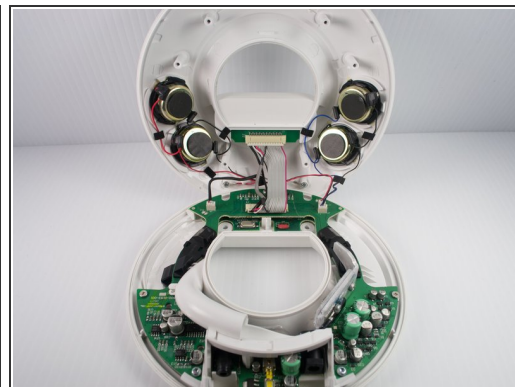
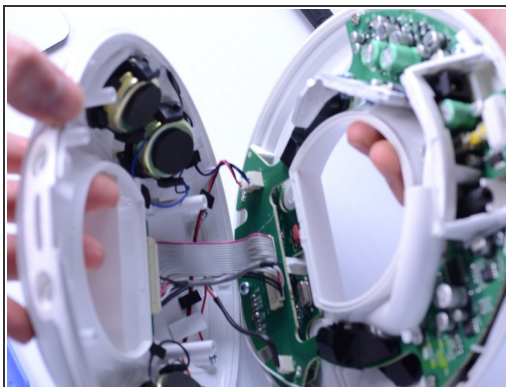
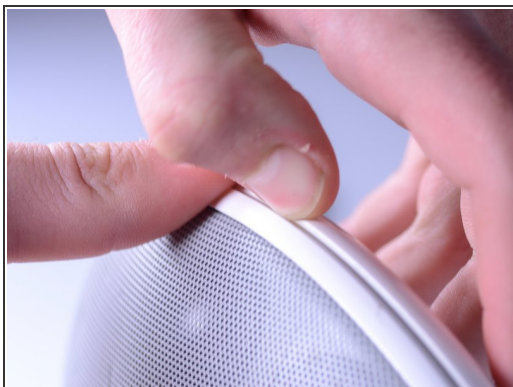
- Remove the heated rubber pad with a plastic opening tool.
- Repeat steps 2 and 3 for the two remaining rubber pads.

Step 4



- Remove the six 1cm T-10 torx screws on the bottom of the device (found under the rubber pads) using a T-10 Torx screwdriver.

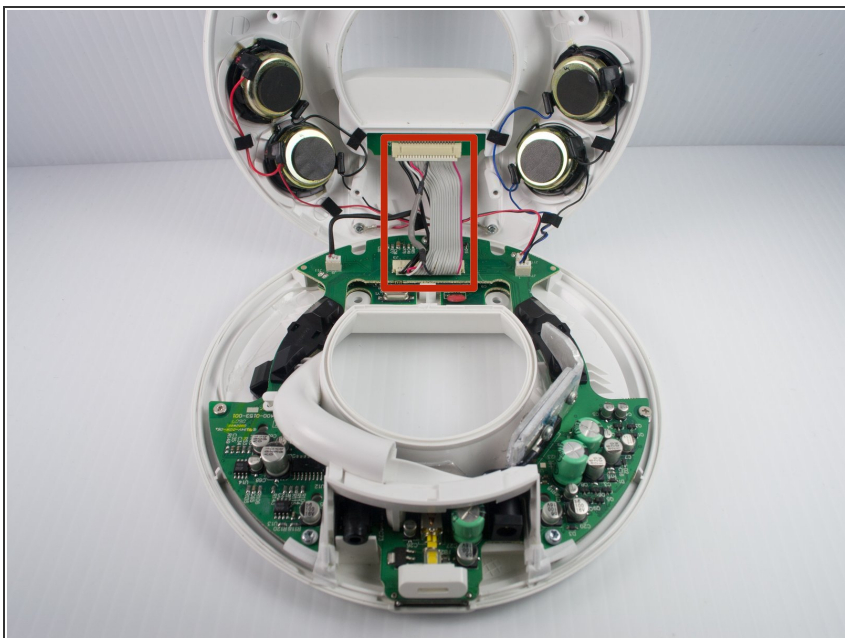
Step 5



- Open the device along its seam.

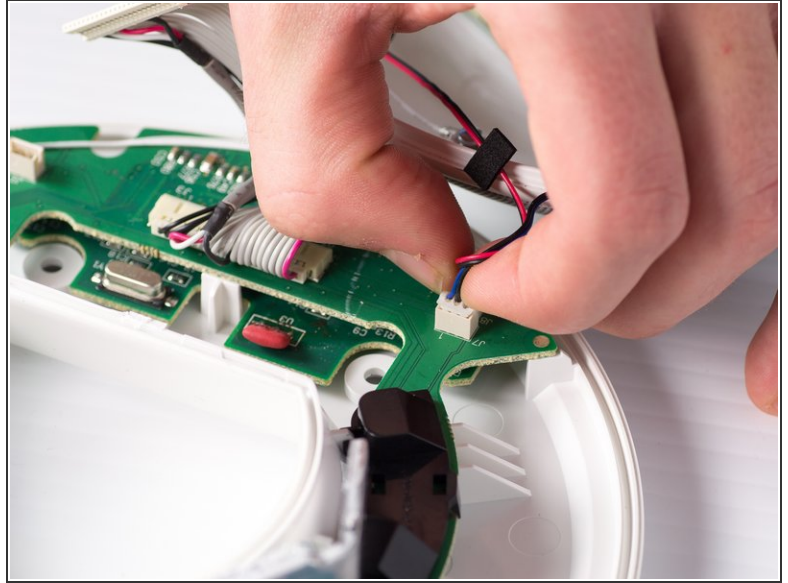
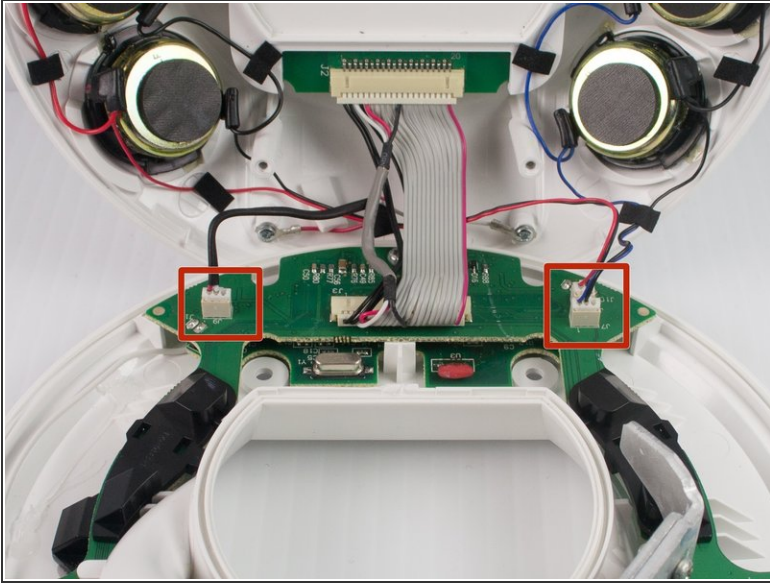
⚠ Be careful when separating the device because there are wires connecting the two separate halves.

Step 6



- Disconnect the ribbon cable connector from the top half of the device by pulling outward and parallel to the connecting pins.

Step 7



- Locate and disconnect the two molex connectors found on either side of the ribbon cable connector on the bottom half of the device.

To reassemble your device, follow these instructions in reverse order.