



iRobot Roomba 4100 Filter Replacement

This is a guide for either cleaning or replacement of the filter in the Red Roomba 4100.

Written By: Samantha Barrett



INTRODUCTION

This guide is fairly easy. It requires no tools and will only take about 5 minutes.

Step 1 — Filter



- Lay the Roomba on a flat surface with the red side up.

Step 2



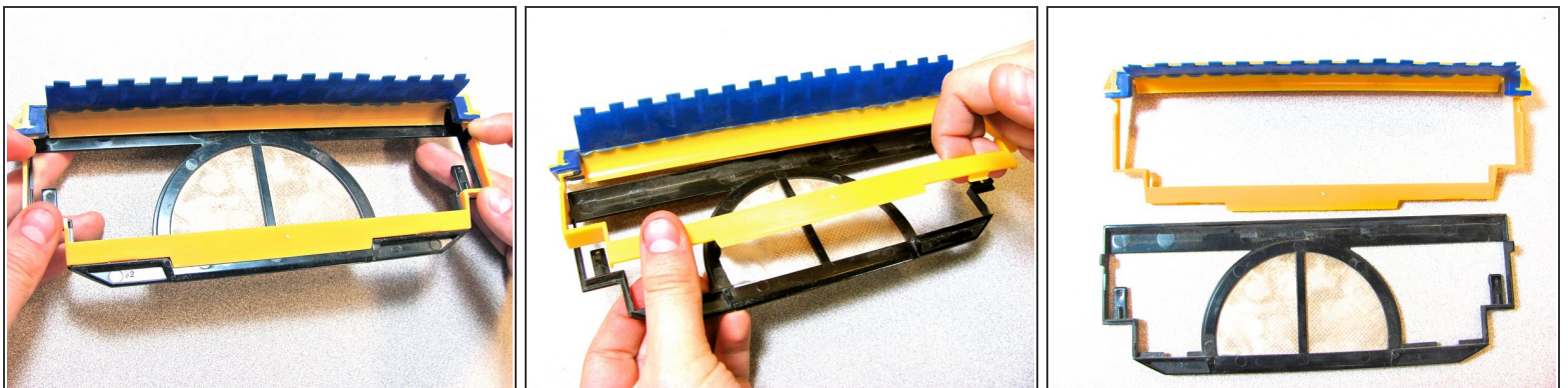
- Push in the red, gumdrop-shaped button with your thumb.
- While holding in the button, slide the back piece away from the main body of the Roomba.

Step 3



- Flip the back piece over in your hand.
- Using your other hand, grab the yellow tab and pull it away from the back piece.

Step 4



- Pinch the black plastic of the filter and pull it away from the yellow filter holder.

To reassemble your device, follow these instructions in reverse order.