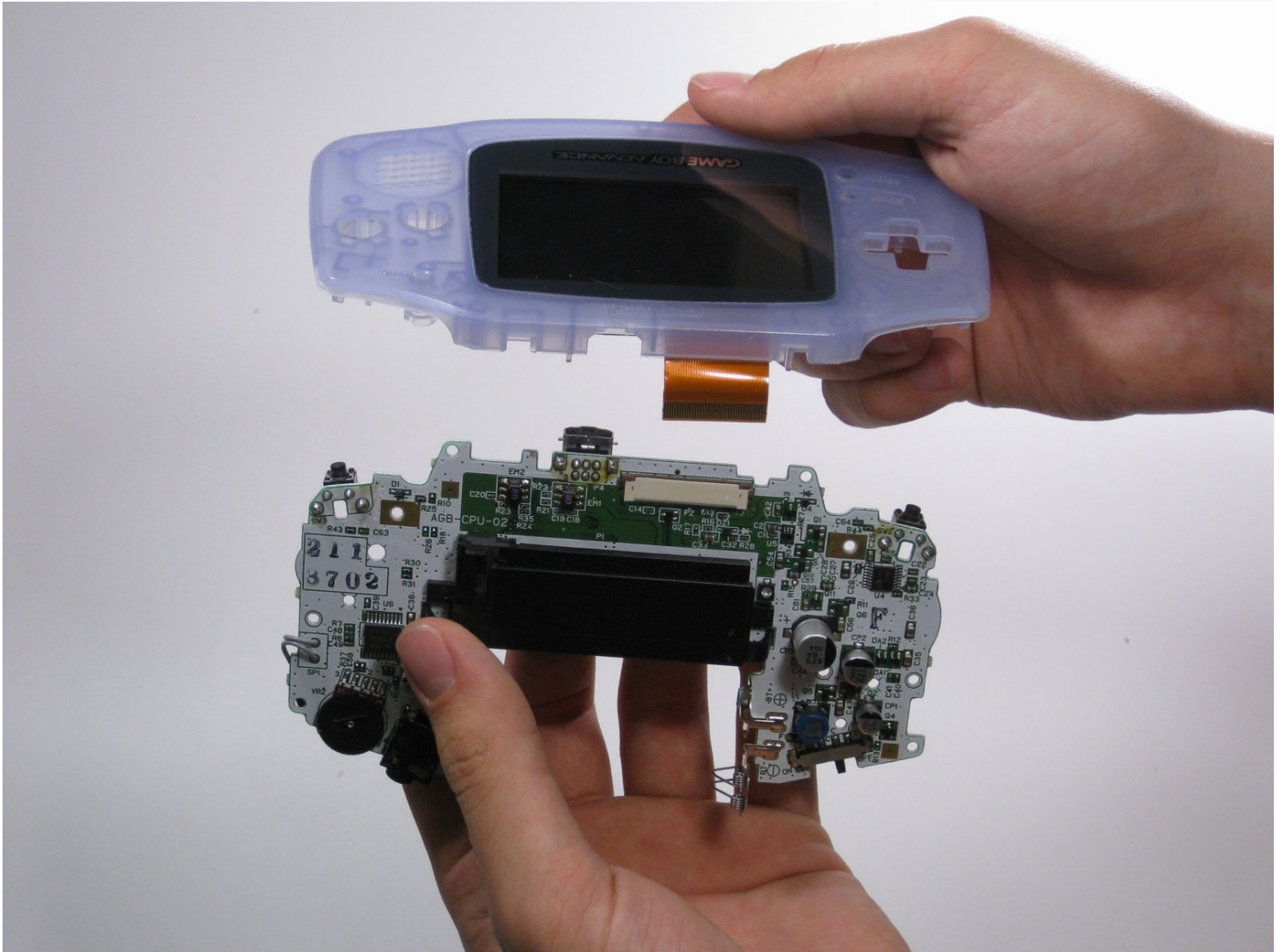




# Game Boy Advance Logic Board Replacement

Use this guide to replace the logic board.

Written By: Jay Aricheta



# INTRODUCTION

Use this guide to replace the logic board.

---

## TOOLS:

Phillips #1 Screwdriver (1)

Spudger (1)

Tri-point Y0 Screwdriver (1)

---

## Step 1 — Remove the Battery Cover/Batteries



- Take the battery cover off by releasing the locking tab and hinging the cover away. Remove the batteries inside the cover

 Do not forget to remove the batteries! This applies to working with any electronic device as working with live electricity may damage the device or cause malfunctions

## Step 2 — Unscrew the Back Panel



- Remove the six back panel screws using a Tri-wing Screwdriver.
- Remove bottom back panel screw with a Phillips #1 screw driver. (Image #2)

## Step 3 — Remove the Back Panel

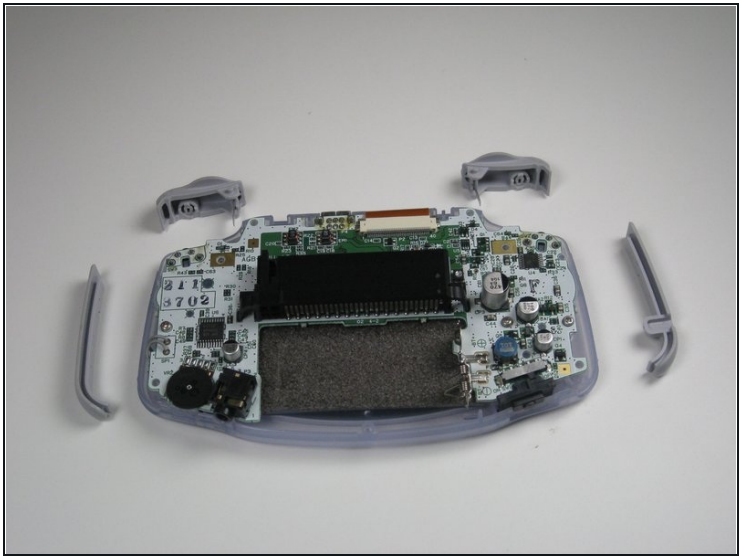


- Remove the back panel by pulling away with one hand and the front secured in the other hand.

⚠ Removal of the back panel may cause shoulder buttons and side panels to come loose and fall off.

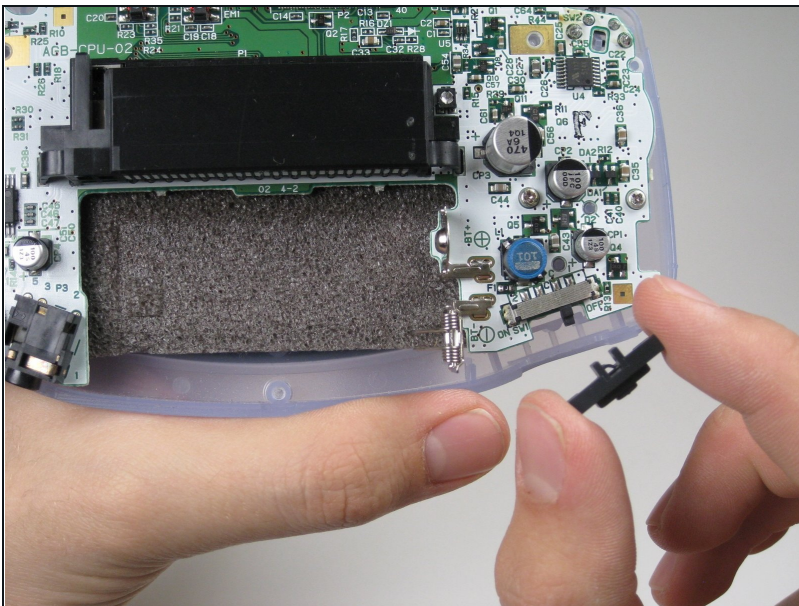


## Step 4 — Remove Triggers



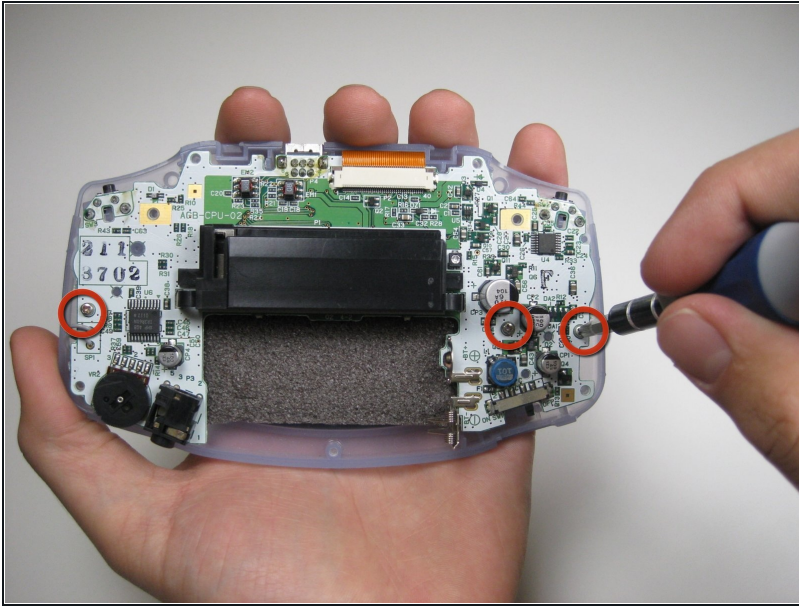
- Remove left and right triggers by lifting and pulling them away from the system.
  - Do the same for side panels
- ① **For finicky or jammed triggers only!** Adjust and correct triggers and reassemble. Most jammed triggers are caused by buttons misplaced or jammed in its enclosure.

## Step 5 — Remove the On/Off Switch



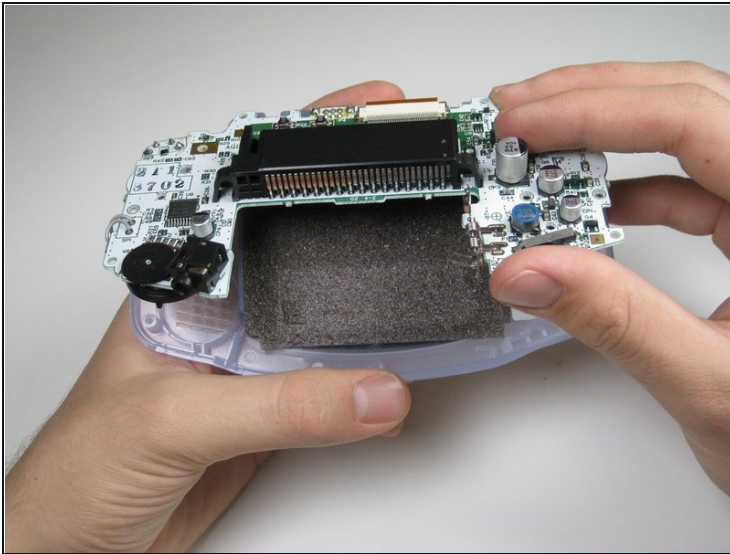
- Remove the gray **On/Off** Switch by pulling up and away from the unit. Replace with another switch if necessary.

## Step 6 — Buttons and LCD Screen



- Remove the three screws on the circuit board with a Phillips #1 screw driver.

## Step 7

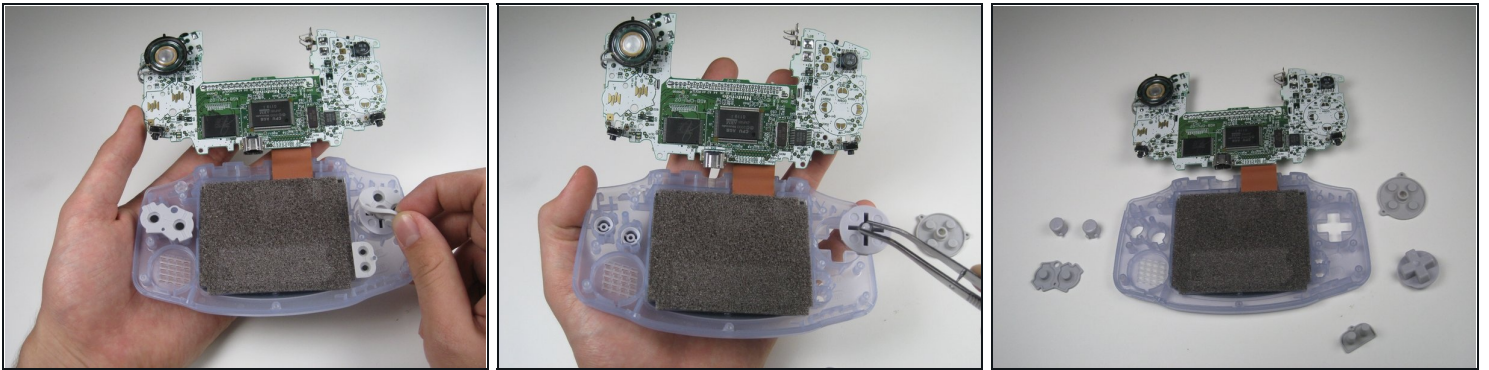


- Pull circuit board away from the front panel by pulling up at the bottom of the circuit board, keeping the top ribbon still connected.

⚠ Handle with care! The ribbon connecting the circuit board to the LCD screen can easily be damaged and will require replacement if broken.

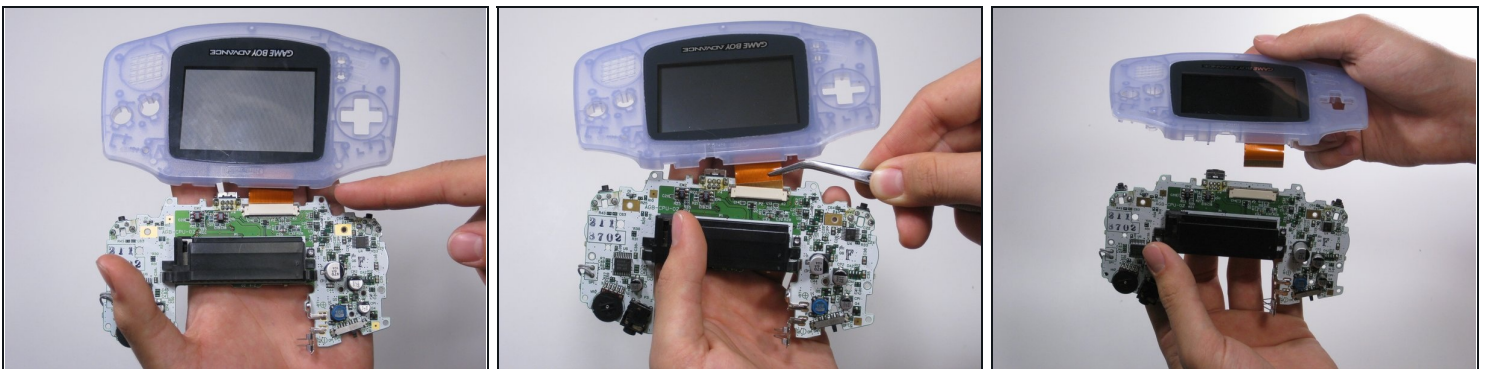


## Step 8 — Buttons



- Remove the rubber button pads from their pockets.
- Remove the plastic buttons and the D-pad from beneath the rubber pads with [tweezers](#) or by hand.

## Step 9 — Logic Board



- Using the [tweezers](#), gently pull the ribbon from the logic board.

---

To reassemble your device, follow these instructions in reverse order.