



# Repairing Polaroid One-Step 600 Shutter

Written By: Kimberly



---

## INTRODUCTION

This repair guide will show you how to replace the shutter in your Polaroid camera. However, you should be careful with your Polaroid, as the plastic is very fragile.



### TOOLS:

- [Spudger](#) (1)
-

## Step 1 — Repairing Polaroid One-Step 600 Shutter



**⚠ THIS REPAIR GUIDE IS VERY DIFFICULT AND SHOULD ONLY BE FOLLOWED IF YOU HAVE EXPERT MECHANICAL EXPERIENCE.**

- Open the flash/ lens compartment of the Polaroid camera to a 30 degree angle with the horizontal.

## Step 2

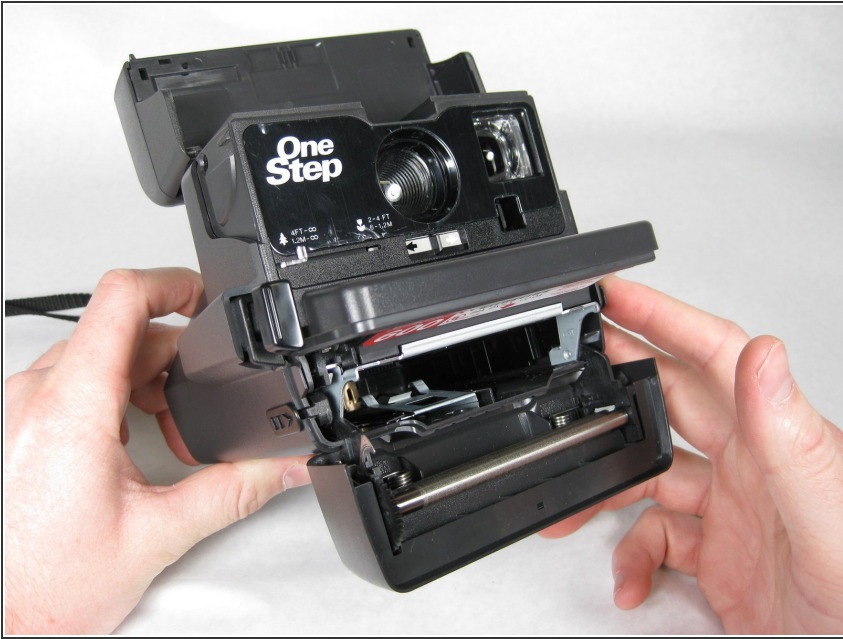


- Separate the flash section of the camera from the main body by unhooking the sides.

**⚠ BE CAREFUL NOT TO YANK THE TWO SECTIONS APART BECAUSE THE BAND WIRE STILL ATTACHES THEM!**

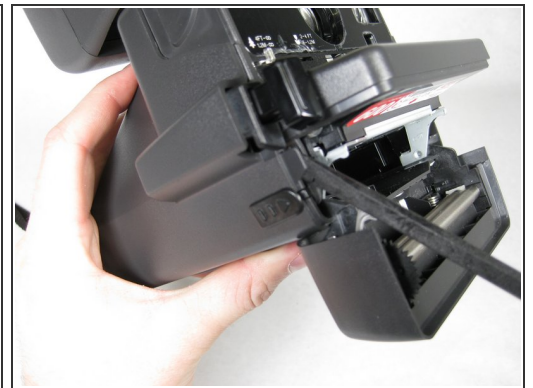
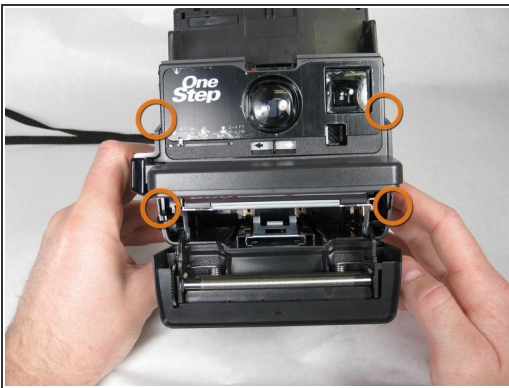


### Step 3



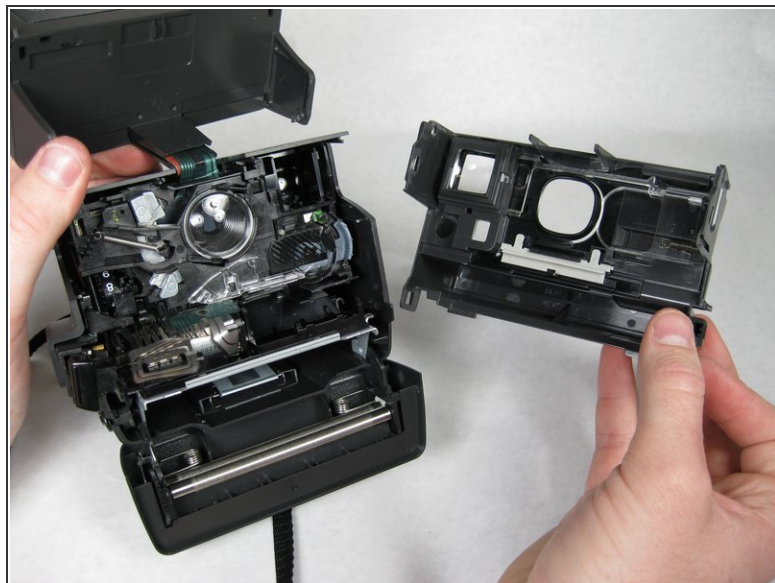
- Open the battery/ cartridge compartment fully.

### Step 4



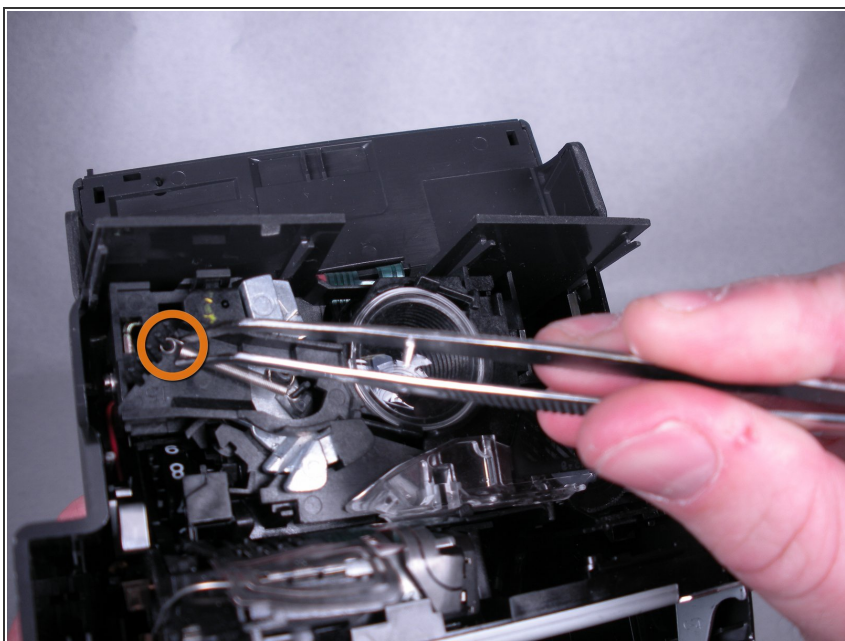
- Insert spudger in between face of camera and sides where the four tabs are located.

## Step 5



- Once tabs are released, pull face of camera straight out.

## Step 6

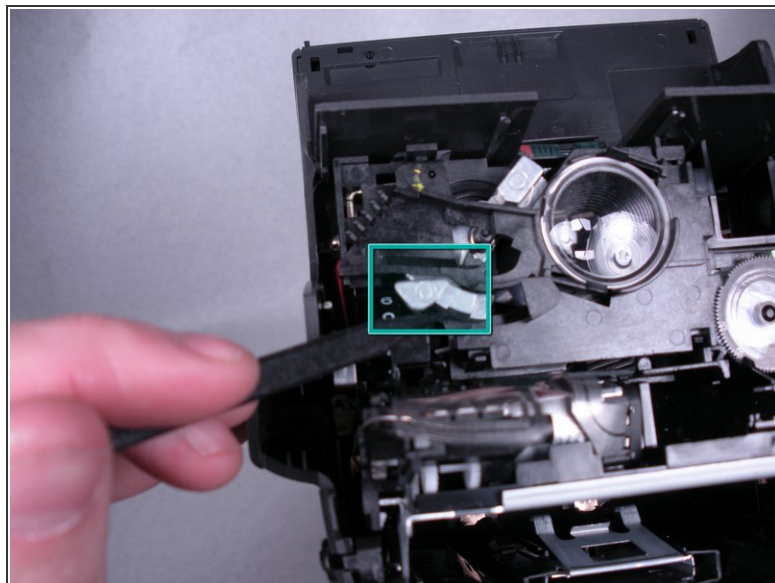
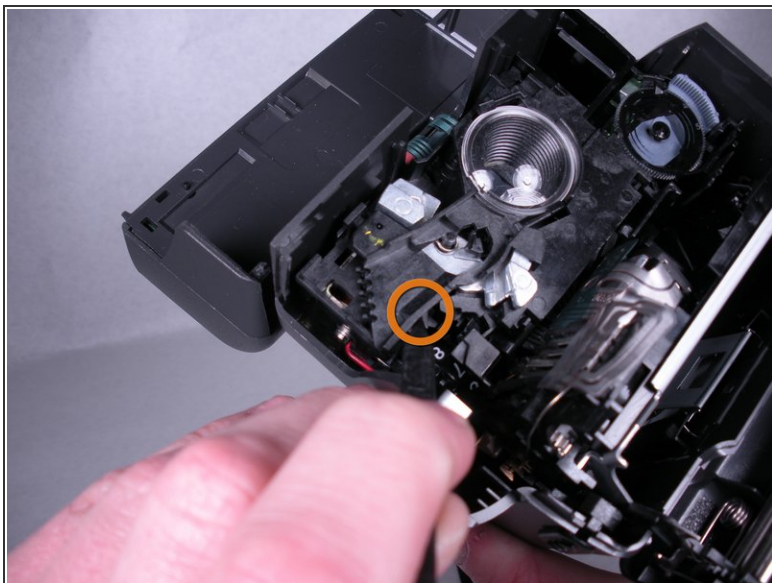


- Carefully use tweezers to remove the spring from the hooks.

⚠ CAUTION: You may lose the spring if it pops off the hooks.

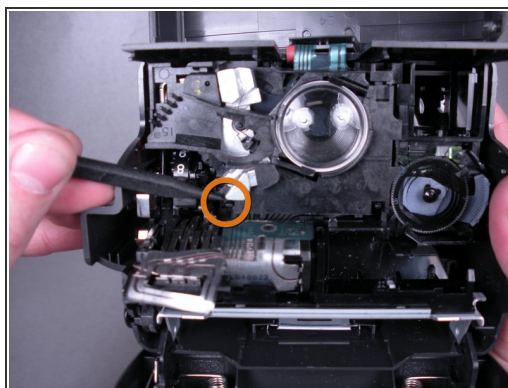
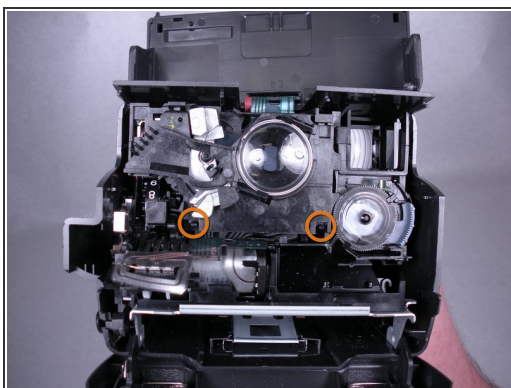


## Step 7



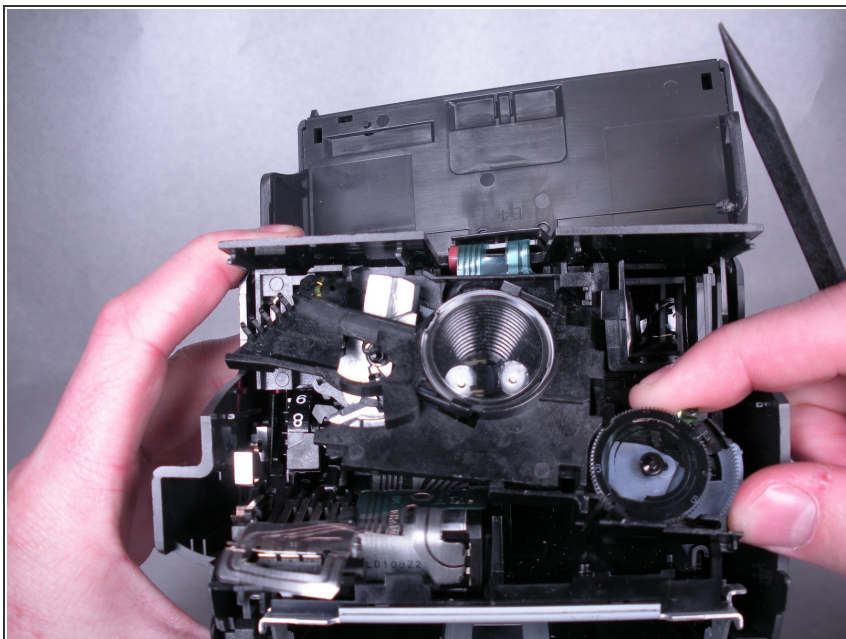
- Use the spudger to release the latch for the shutter mechanism.
  - Rotate the shutter mechanism clockwise until it stops.
- ⓘ If latch was successfully released, shutter mechanism should touch top plastic brace.

## Step 8



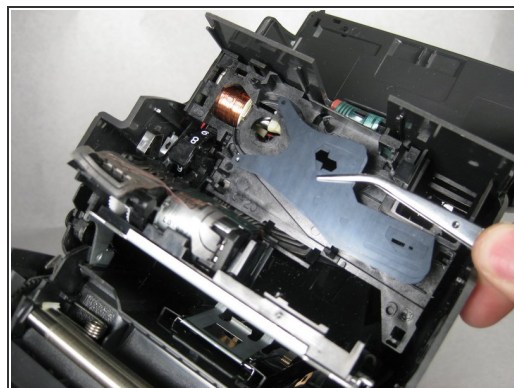
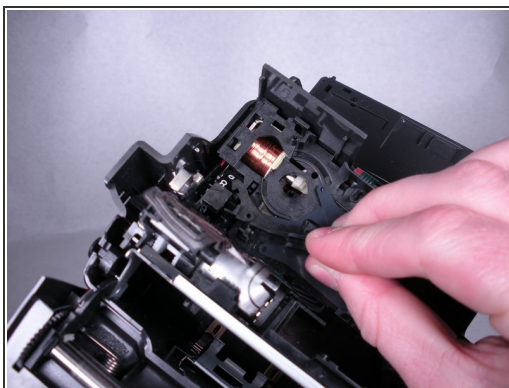
- Release the two tabs that hold lens plate in position.

## Step 9



- Remove the lens plate by pulling down, then away from the camera.

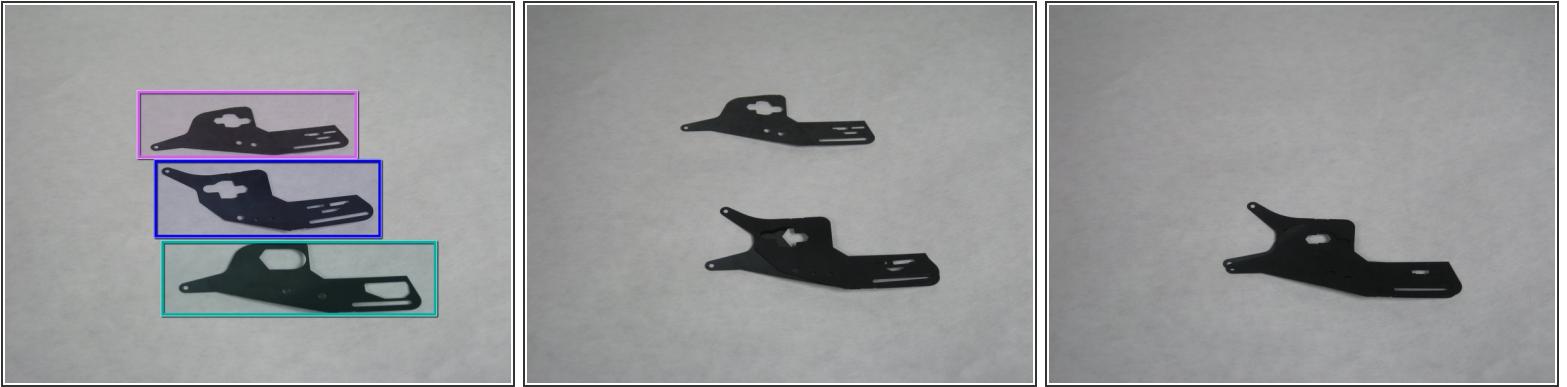
## Step 10



- Remove the shutter mechanism from the camera.
- Remove black latch piece from the camera.
- Remove shutter plates from the camera.

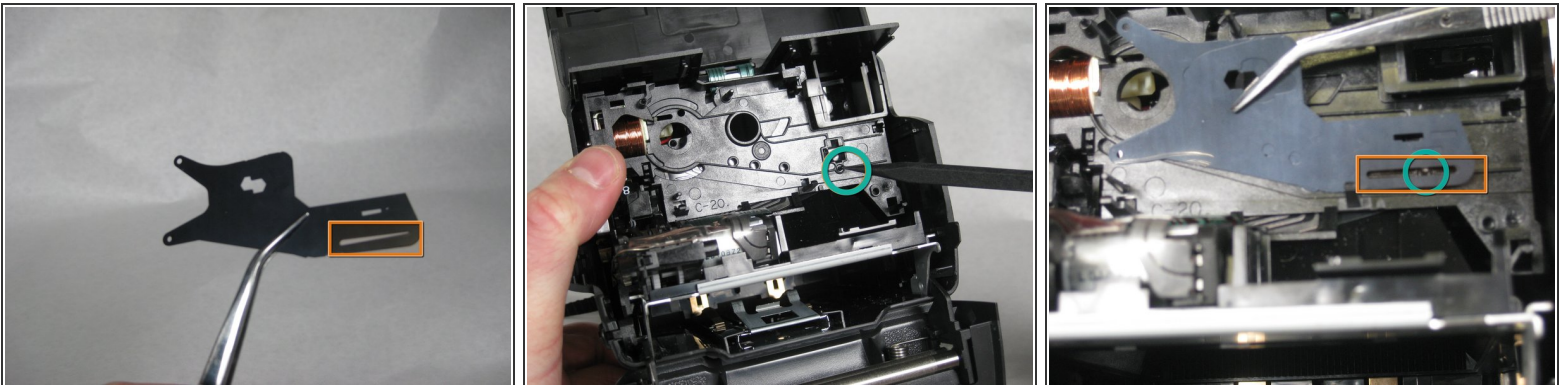


## Step 11



- To replace the shutter pieces in the camera, first make sure they are in the proper order.
- The shutter piece at the bottom of the first picture belongs on the bottom.
- The shutter piece in the middle of the first picture goes in the middle (second picture).
- The shutter piece at the top of the first picture goes on top (third picture).

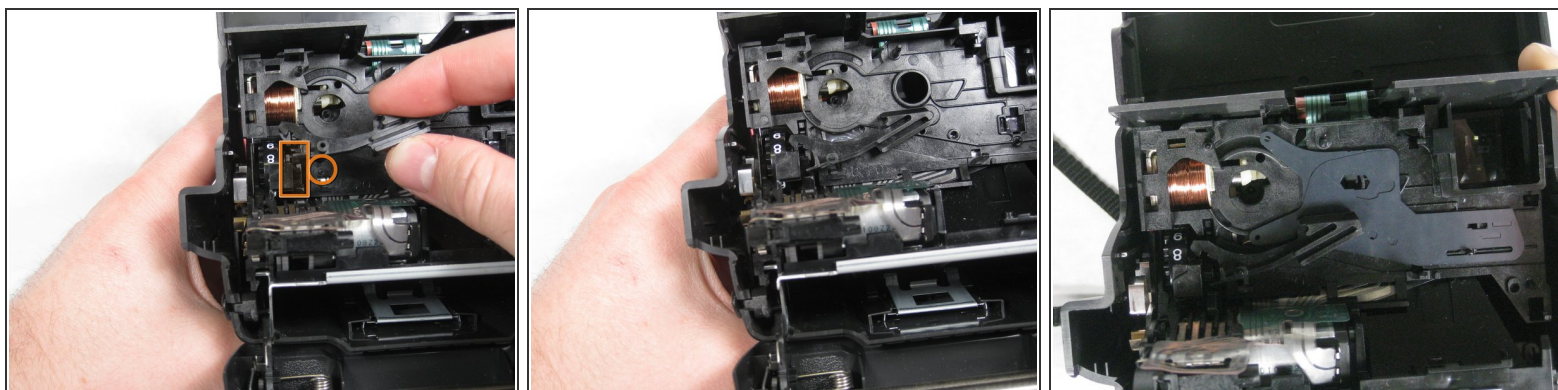
## Step 12



- By looking at the first picture, line up the long, skinny slots on the three shutter pieces.
- In the second picture, notice the pin inside the circle.
- Line up the slots in the shutters with the pin inside the camera as shown in the third picture.



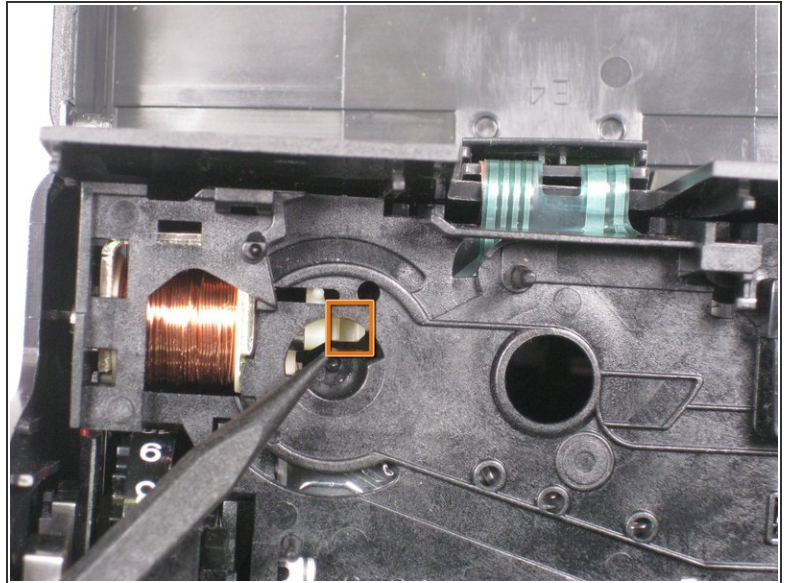
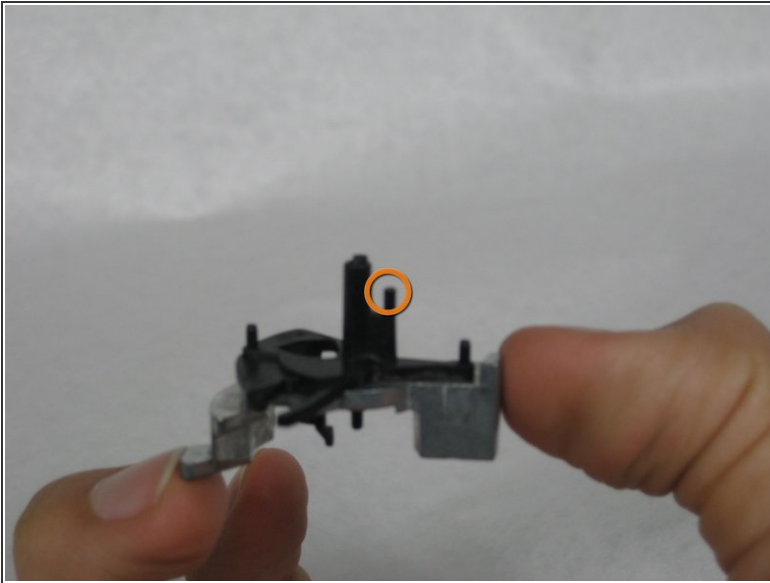
## Step 13



**i** NOTE: The shutter pieces are not included in the first two pictures of this step because they slide around too easily for us to take pictures with them in the camera.

- Put black plastic piece back into camera, making sure to slide tab into slot (rectangle) and onto the pin (circle).
- Final assembly for this step should look like the third picture.

## Step 14

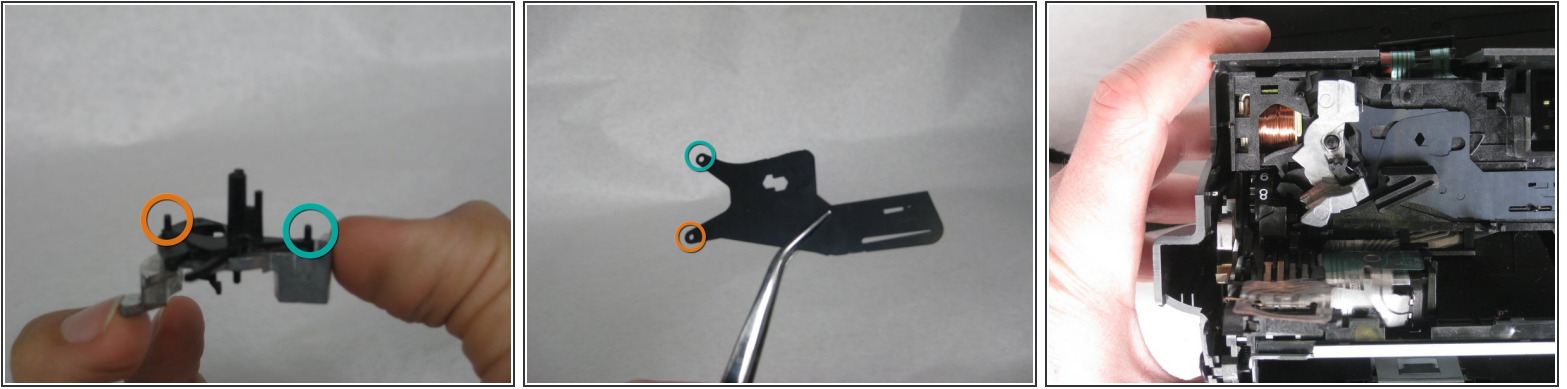



**⚠ CAUTION:** The next two steps are incredibly difficult!


- First, you must align the tab (circled) with the slot (rectangle).

**⚠ Do not put pieces together until after reading the next step!!!**

## Step 15



 **REMINDER:** This step is very difficult and may require multiple attempts.

- Align teal and orange circled tabs from the first picture with the respective teal and orange holes in the shutter pieces.
  - After the shutter mechanism is placed into the camera, make sure all three shutter pieces are attached correctly.
-  **NOTE:** When correctly attached, the shutter pieces will slide in opposite directions when the shutter mechanism is rotated.
- To finish putting the Polaroid back together, follow steps 9 through 1 in reverse.