

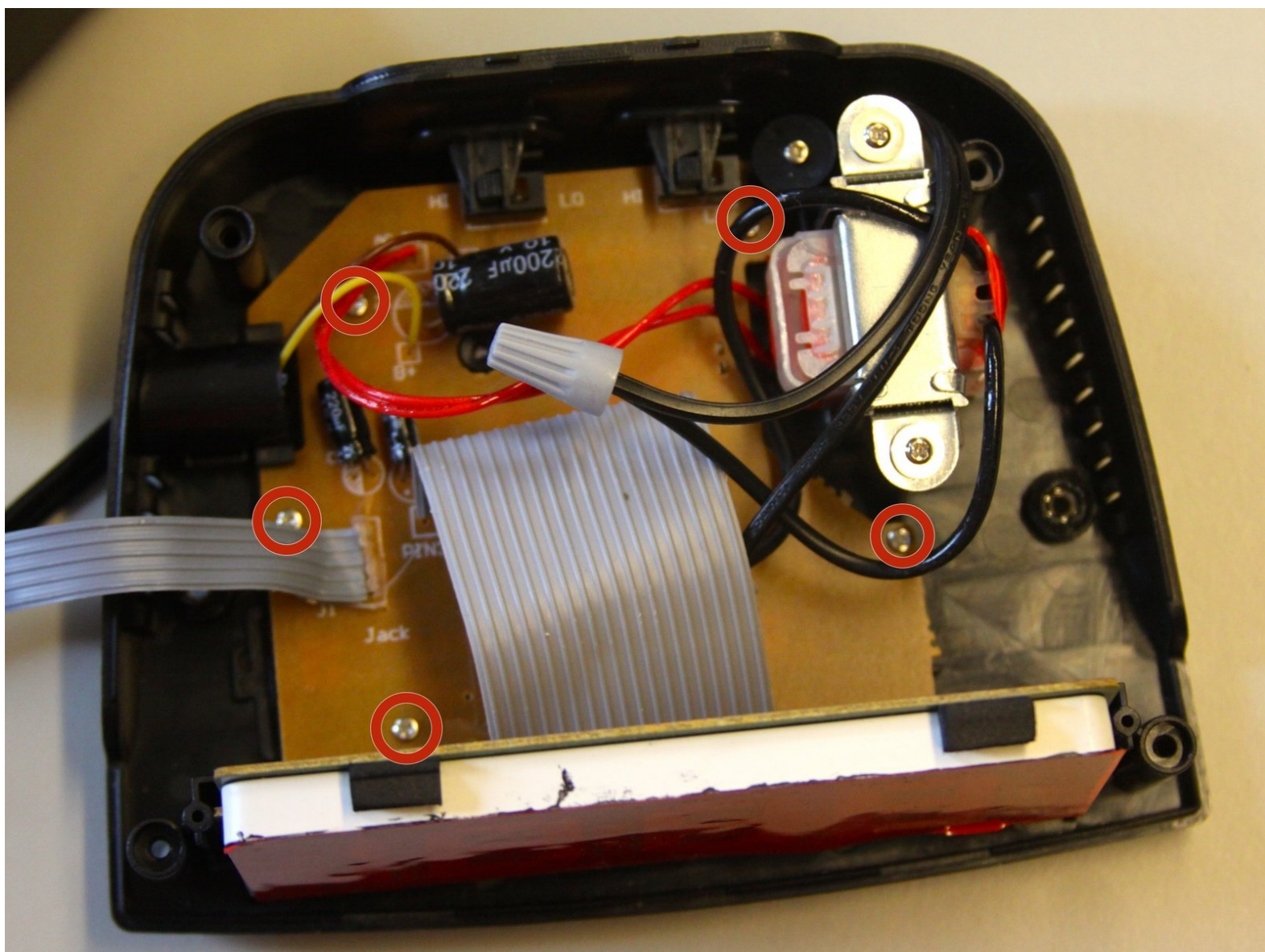


Fixing a AcuRite Intelli-Time Alarm Clock

Faulty Alarm

When prompted, the alarm does not occur.

Written By: Nicholas Roppolo





TOOLS:

- [Tweezers](#) (1)
 - [Phillips #00 Screwdriver](#) (1)
-

Step 1 — Opening the Device



- Flip device upside down and remove the 4 foam pads at each corner.

Step 2



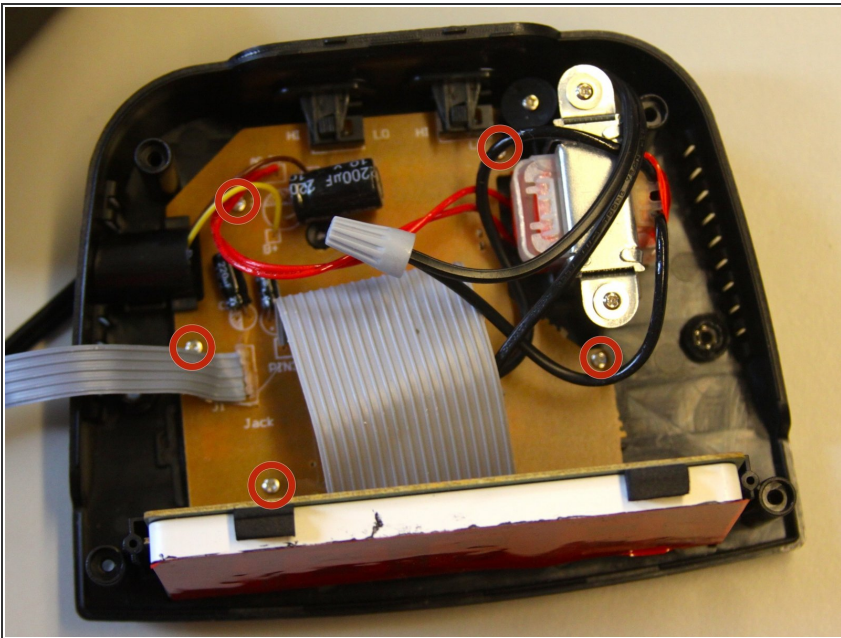
- Remove the 4 screws using a Philips Screwdriver.

Step 3



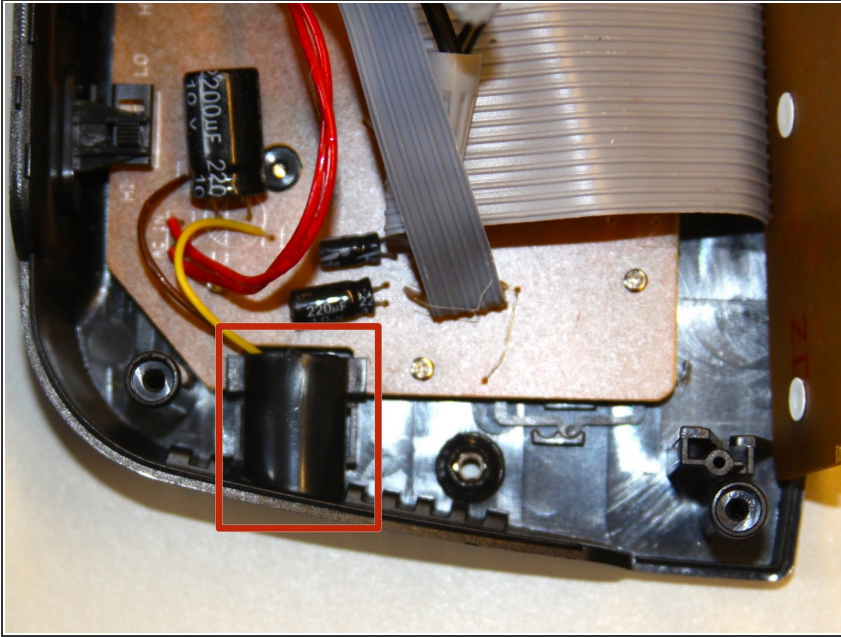
- Gently lift the case off of the body and set down in a safe place.

Step 4 — Fixing a AcuRite Intelli-Time Alarm Clock Faulty Alarm



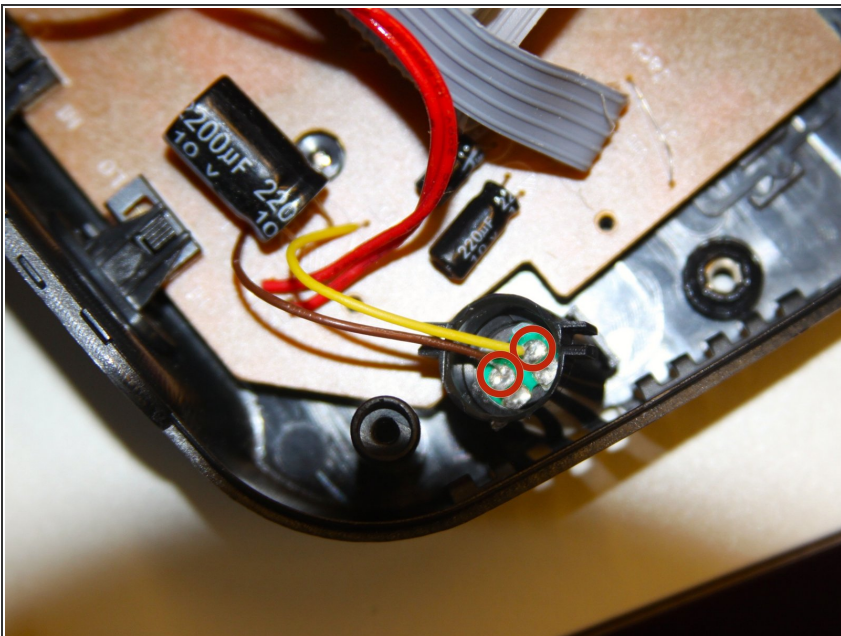
- Unscrew the 5 screws in the base circuit board.

Step 5



- Use the tweezers to slightly lift the circuit board, allowing the cylindrical alarm piece to slide out.

Step 6



- Check if the wires are secured.

Step 7



- If they are not attached, you may re-solder it together. If they are attached, that means it is a faulty alarm and should replace it.

To reassemble your device, follow these instructions in reverse order.