



Sony Ericsson Xperia X10 Camera Replacement

User should be able to disassemble phone, locate camera component if necessary.

Written By: Bryan

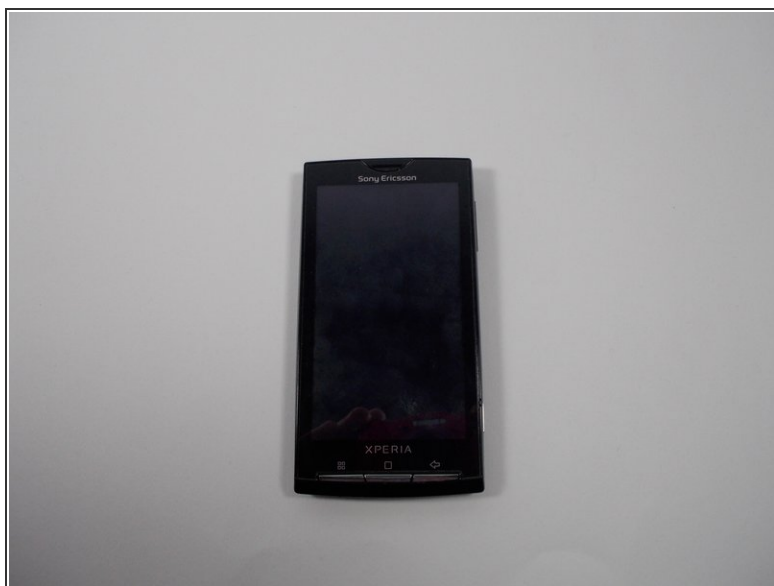




TOOLS:

- [Flathead Screwdriver](#) (1)
 - [T6 Torx Screwdriver](#) (1)
-

Step 1 — Camera



- To access the internal components, such as the camera, we need to flip the phone with the screen facing down. Once this is done remove the battery.

Step 2



- Remove eight 5mm screws as shown in the image. Use a T-6 bit.

Step 3



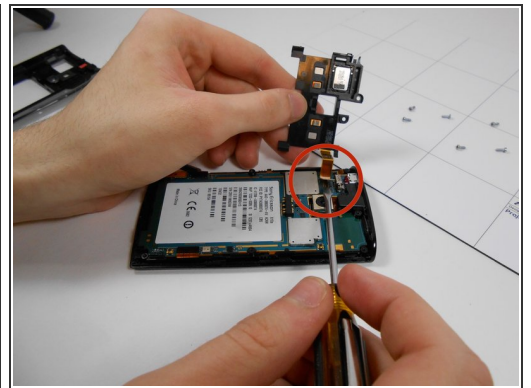
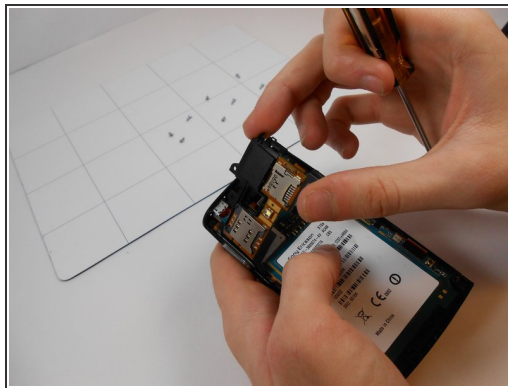
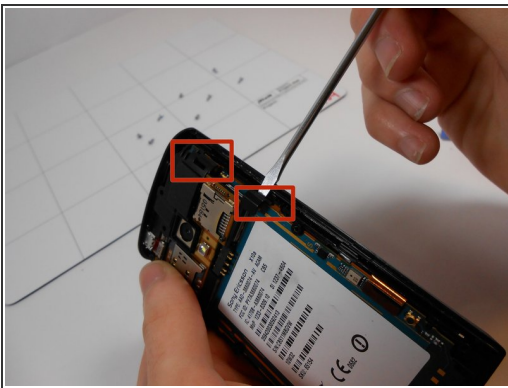
- Using a case opener, start on the bottom right side of the phone and undo clips located at the interior sides. Repeat this step for the left side.

Step 4



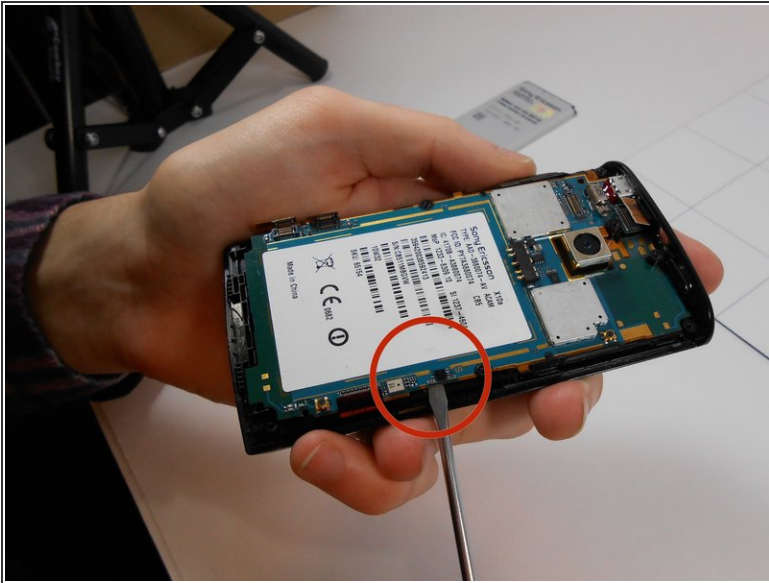
- Once the clips are undone the back casing should dislocate and reveal the internal components of the phone. Camera location is identified on the image.

Step 5



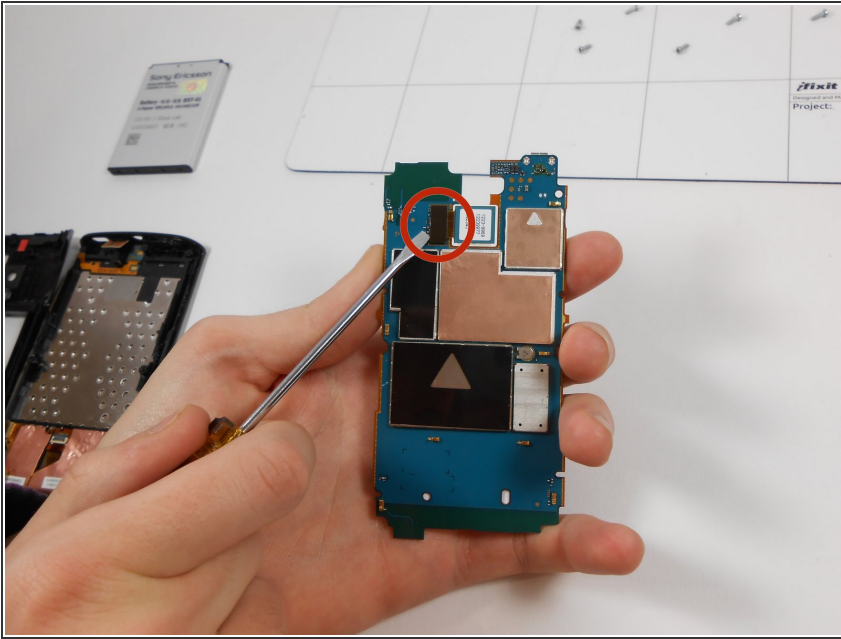
- To remove the internal case surrounding the camera, apply pressure on the left side of internal casing and using a flat head screw driver unlatch both clips on the right side of casing. Once lifted detach ribbon cable with flat head screwdriver.

Step 6



- Once the interior casing is removed, dislocate the hardware by unlatching clip at shown location.

Step 7



- To remove damaged camera flip hardware so the lens of the camera is facing downwards and remove ribbon cable connecting camera to hardware.

Step 8



- Once camera is removed, insert new functional camera part and reassemble

To reassemble your device, follow these instructions in reverse order.