



Solio CLASSIC2 Electric Wire Replacement

To replace any broken electric wires.

Written By: Kelly Perkins



INTRODUCTION

To replace a broken wire connected to the circuit board, soldering must be done. Before attempting this guide, please read the iFixit's guide to soldering ([How To Solder and Desolder Connections](#)). For this replacement, perform all steps on a table away from any flammable objects.



TOOLS:

- [Soldering Iron](#) (1)
- [Phillips #1 Screwdriver](#) (1)
- [iFixit Opening Tools](#) (1)
- [Tweezers](#) (1)



PARTS:

- [Insulated Electric Wire](#) (1)

Step 1 — Disconnecting the Battery



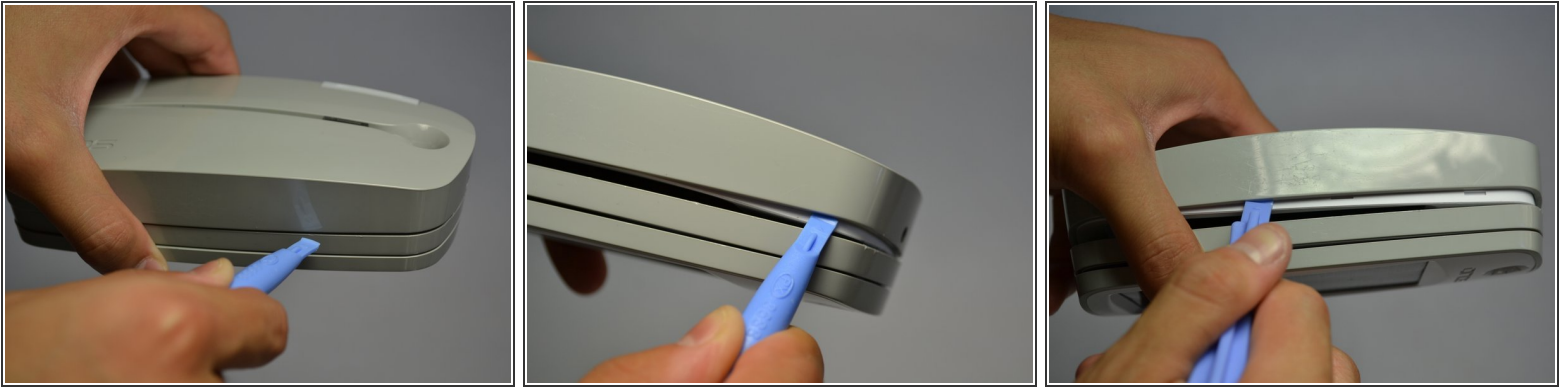
- Turn off the device by pressing on the clear power button behind the device.
- ⓘ To make sure that it is off, make sure the button is not flashing green.

Step 2



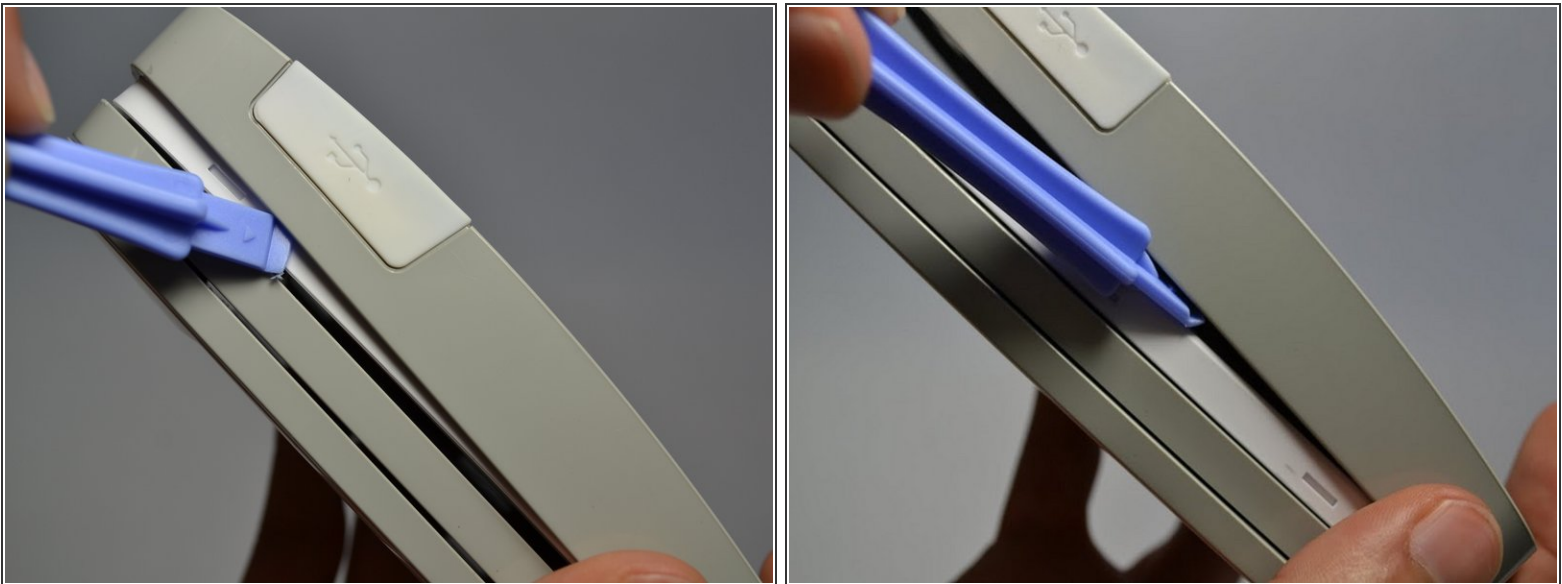
- Using the Phillips #1 screwdriver, remove the 2mm screw located on the bottom of the device, near the hinge.

Step 3



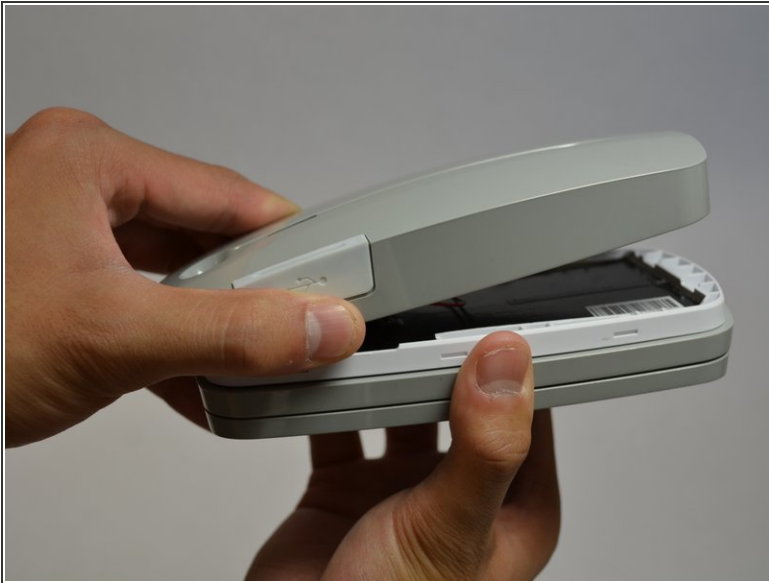
- Using the plastic opening tools, gently pry open the side of the large panel.
- Keeping the tool in, slowly slide the tool along the side of the panel.


Step 4



- Rotate the device 180 degrees.
- ⓘ Make sure the opening on other side of the device does not snap closed.
- Gently slide the plastic opening tool along the side of the panel.

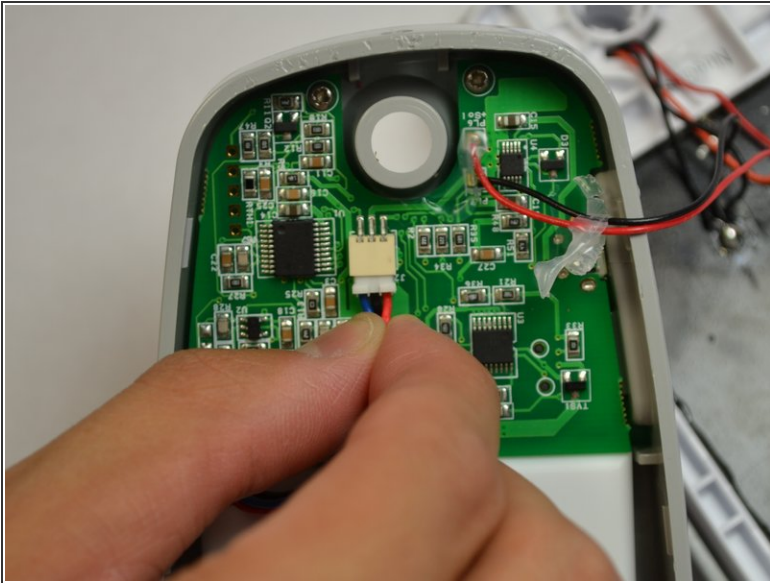
Step 5



 Do not fully pull apart the back panel from the device. Doing so can rip the two red and blue wires attached to the panel.

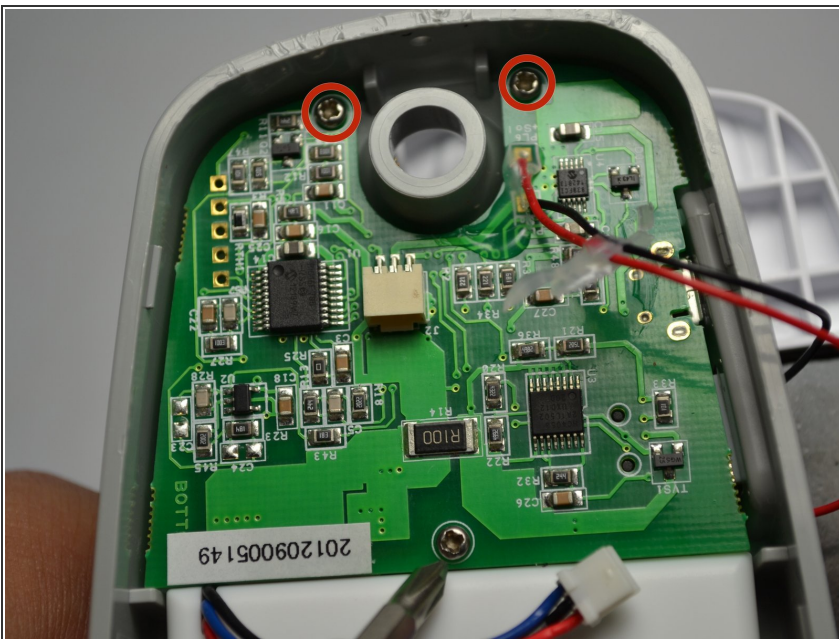
- Using both hands, slowly pull apart the back panel from the rest of the device.
- Gently flip the back panel open so the circuit board faces up and the two panels are side by side.

Step 6



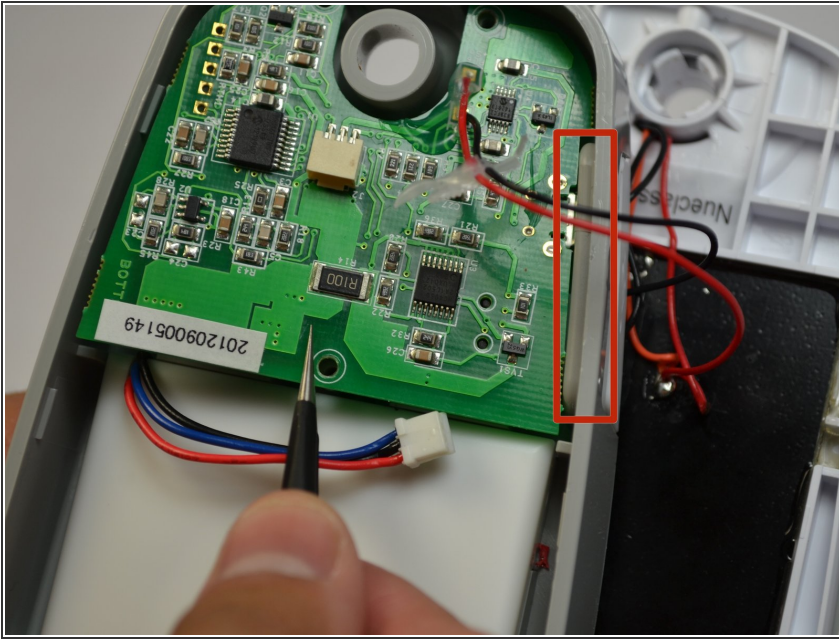
- Softly pinch the red and blue wires close to the white connector.
- To pull the wires out, wiggle them back and forth until the connector is fully out.

Step 7 — Circuit Board



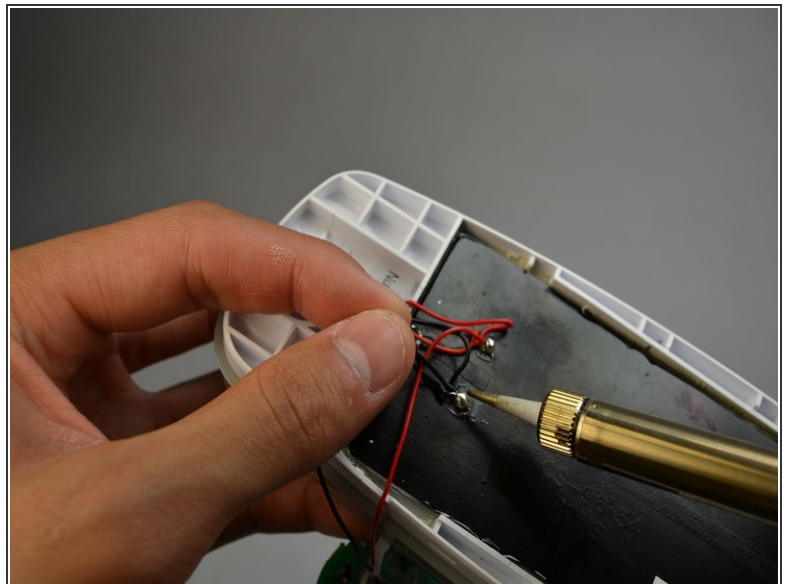
- Unscrew the three 2mm screws holding the circuit board down using a Phillips #1 screwdriver.


Step 8



- Make sure the white USB port cover on the side of the device is pulled out or you won't be able to lift the circuit board.
- Gently lift the circuit board out of the device using tweezers.

Step 9 — Electric Wire



 Soldering can melt key components and cause harm to both the user and the device. Read soldering guide before attempting.

- Using a solder iron with a fine tip, slowly solder off the broken wire from the first connection point.
- Repeat for other connection point of wire.

This document was generated on 2020-11-28 03:06:09 AM (MST).

To reassemble your device, follow these instructions in reverse order.