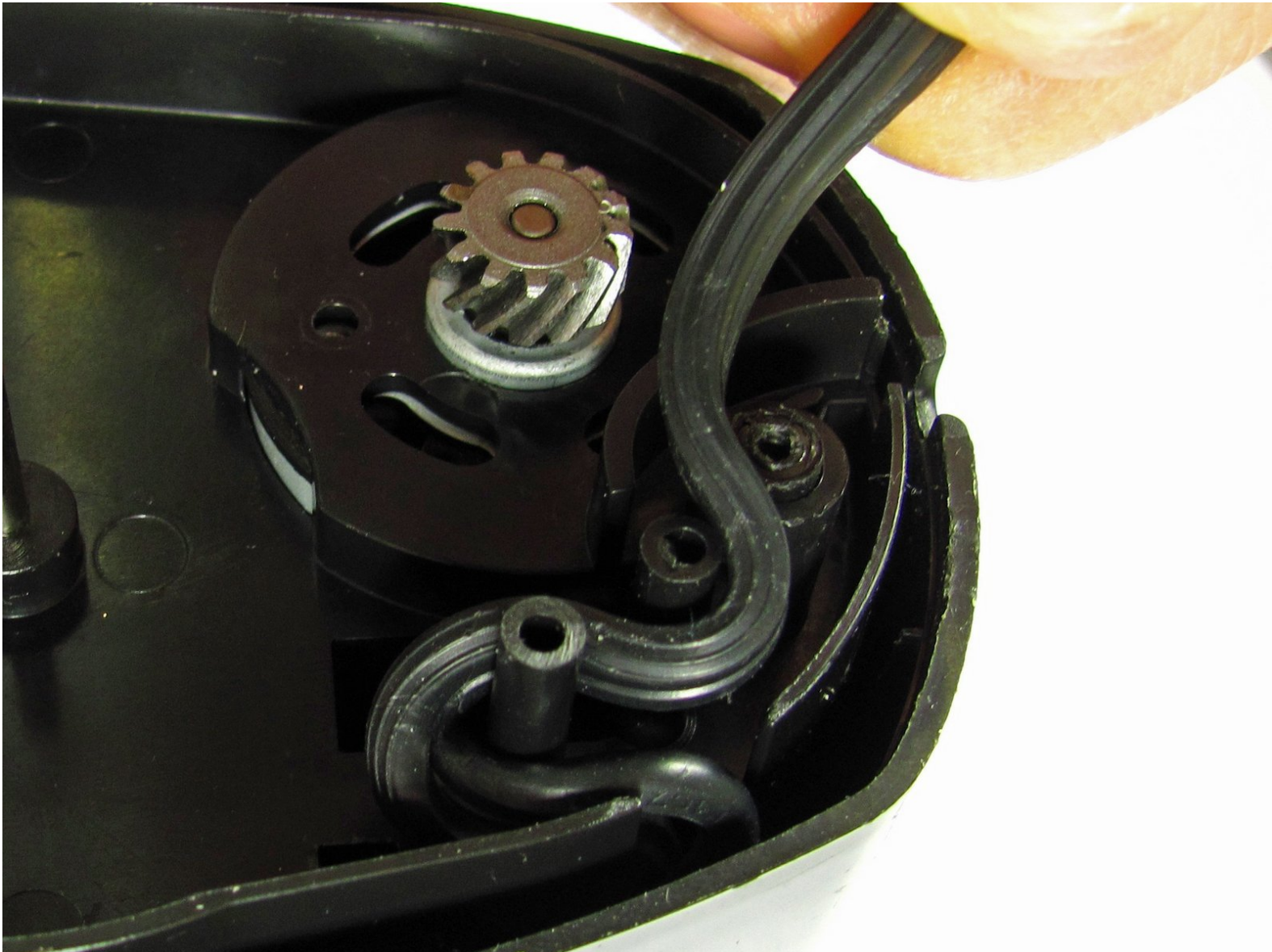




Rival Mini Chopper MC-67BL Power Cord Replacement

Remove the power cord of the Rival Mini Chopper.

Written By: Roxanne



INTRODUCTION

This guide will help you remove the power cord and requires the use of a soldering iron. Check out this [soldering guide](#) for help if you don't know how to solder.



TOOLS:

- [Phillips #2 Screwdriver](#) (1)
 - [Large Needle Nose Pliers](#) (1)
 - [Soldering Workstation](#) (1)
 - [Sharp knife](#) (1)
-

Step 1 — Turning Gears



- Twist the plastic lid counterclockwise to unlock it.
- Lift the lid to remove it from the container.

Step 2



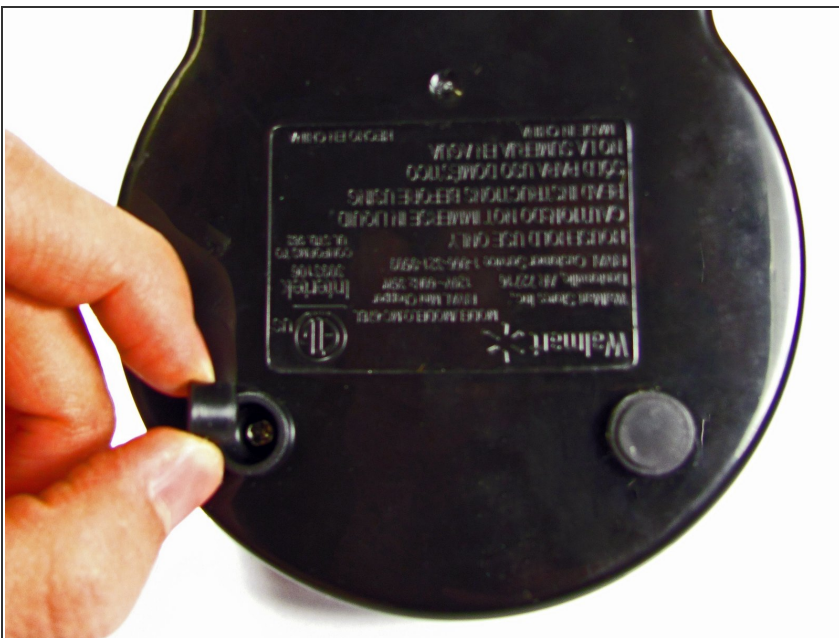
- Carefully remove the blade from the container.
- ★ For reassembly, the teeth on the metal shaft line up with slots on the inside of the plastic hole.

Step 3



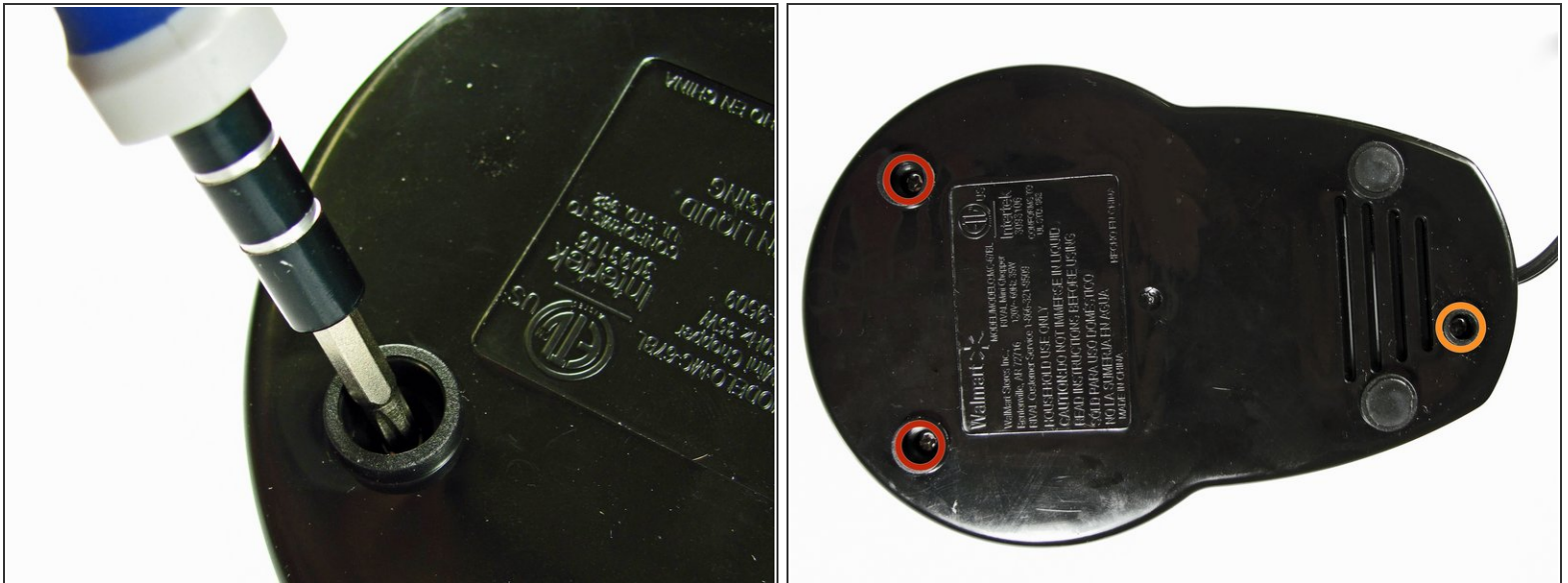
- With your hand, twist the container counter-clockwise until it unlocks from the base. Remove the container by lifting it straight up.

Step 4



- Use your fingers to pry out the two rubber feet from the bottom cover of the base.
- ⓘ The two feet furthest from the button tower contain screws. The other two feet do not.

Step 5



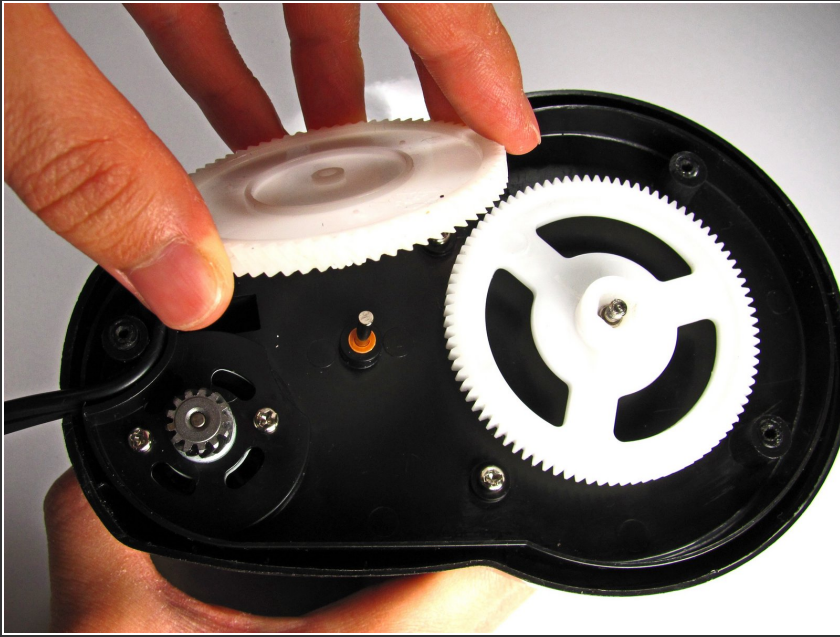
- Use the Phillips #2 screwdriver to unscrew the two 12.7-mm screws underneath the rubber feet.
- Use the same screwdriver to unscrew the 15.88-mm screw from the back of the chopper.

Step 6



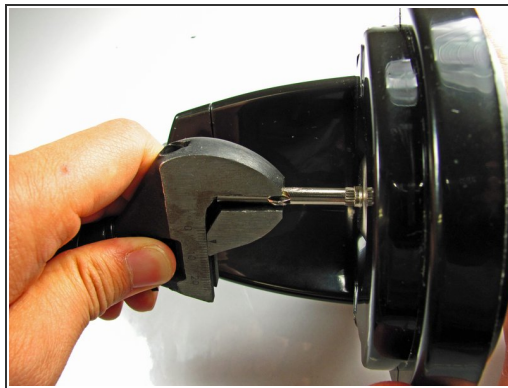
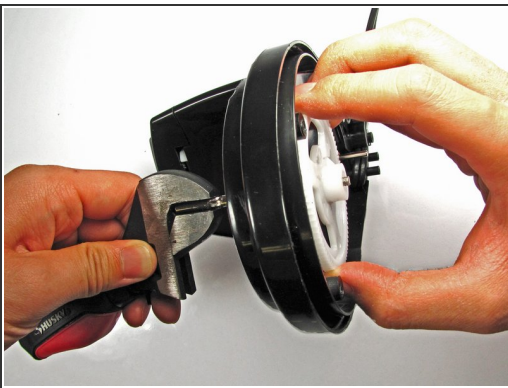
- Firmly lift the bottom cover off of the base.

Step 7



- Remove the smaller white gear by lifting it up with your hand.

Step 8



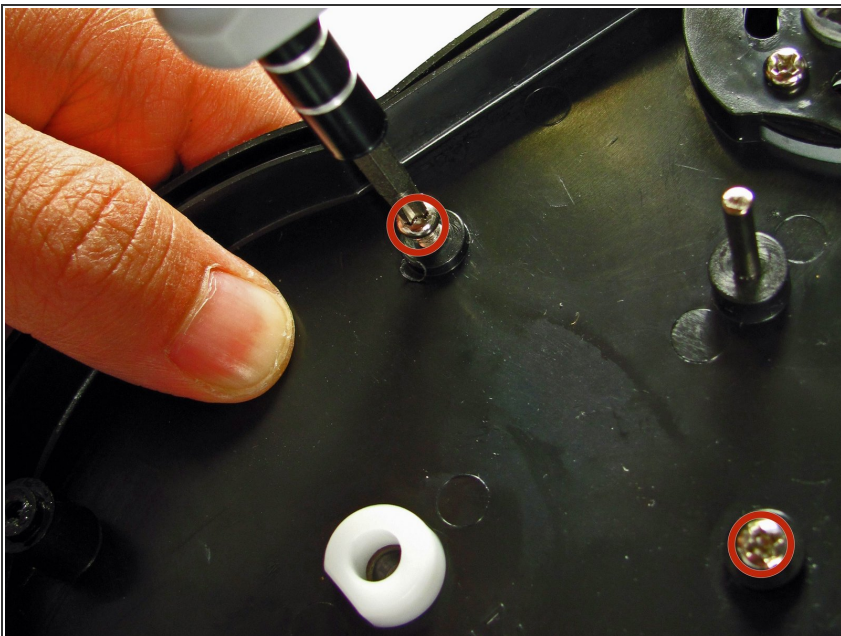
- Use a pair of pliers or any other clamping tool to securely hold the blade-shaft that sits above the base.
- ⚠ Grab the gear with your other hand and turn **CLOCKWISE**. Unlike most screws, the gear is reverse-threaded to allow the blade to spin.
- Continue turning the gear until completely removed from the blade-shaft.

Step 9 — Power Cord



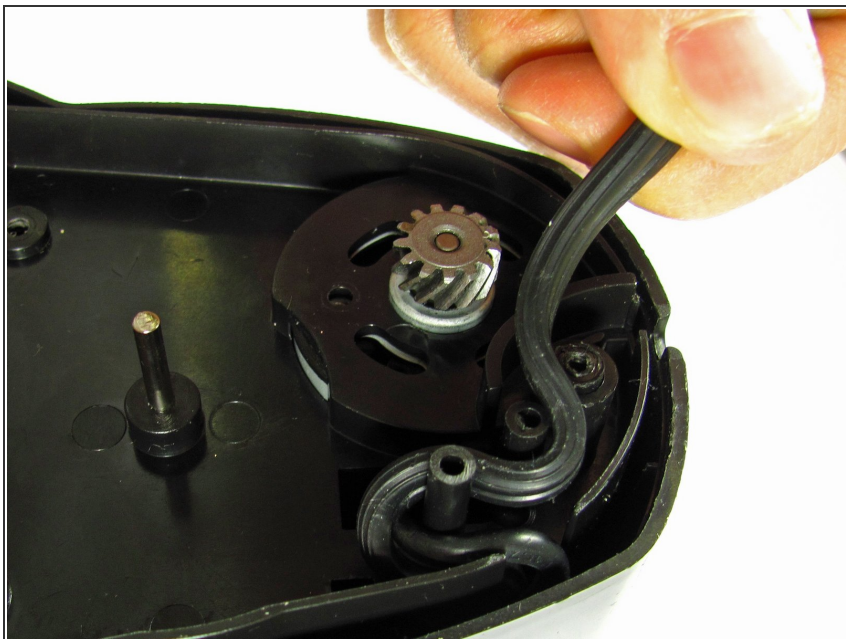
- Use your hand to firmly pull the blade-shaft from the base.

Step 10



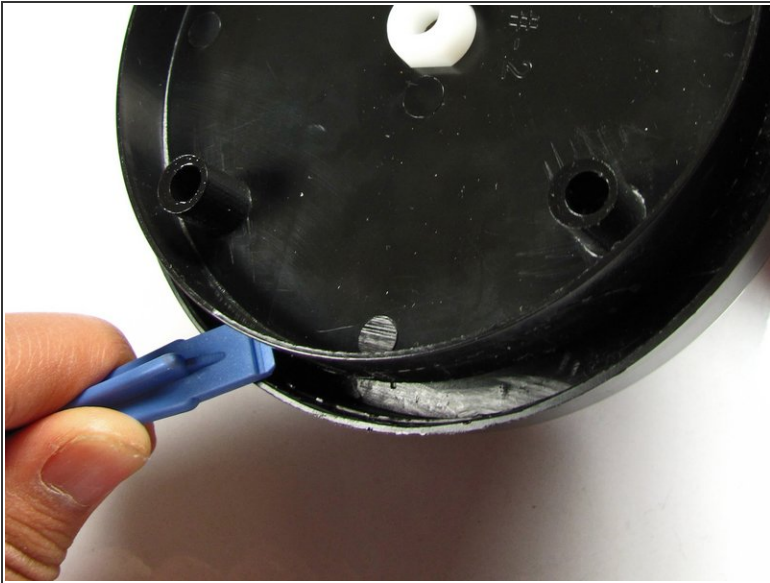
- Using Phillips #2 screwdriver, unscrew two 12.7-mm screws in the middle of the base.

Step 11



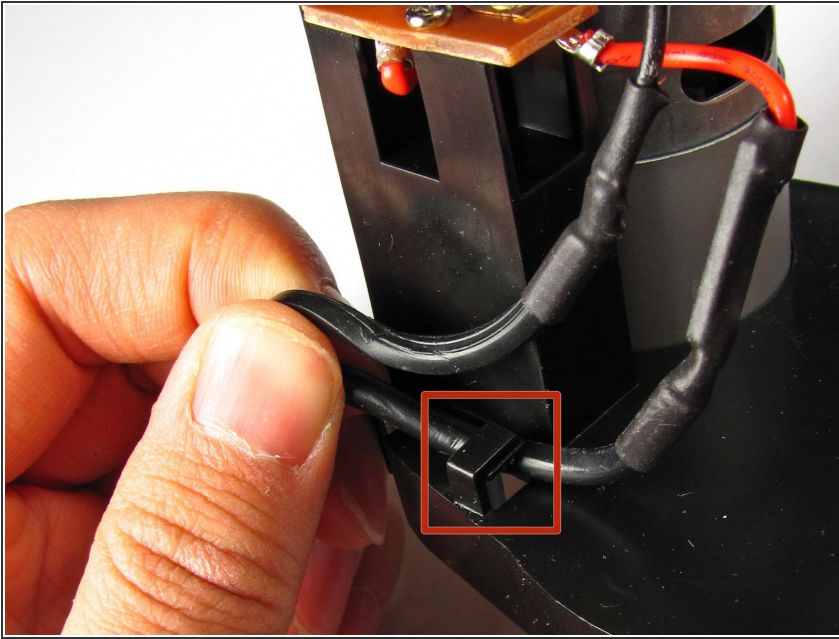
- Unwind power cord from the base pegs.

Step 12



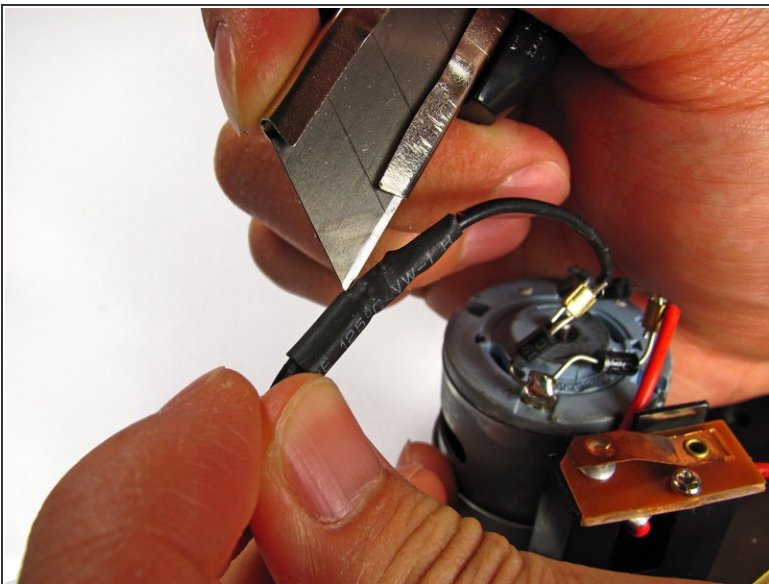
- Use the plastic opening tool to pry open the base from the main body.
- ⓘ These two plastic prongs are pressed fit into the base. It may take some effort to pry the base completely off.
- Once freed, lift the base panel from the main body. The motor and power cable are connected to this panel.

Step 13



- Pull the power cord wires up from underneath the wire hook on the side of the motor.

Step 14



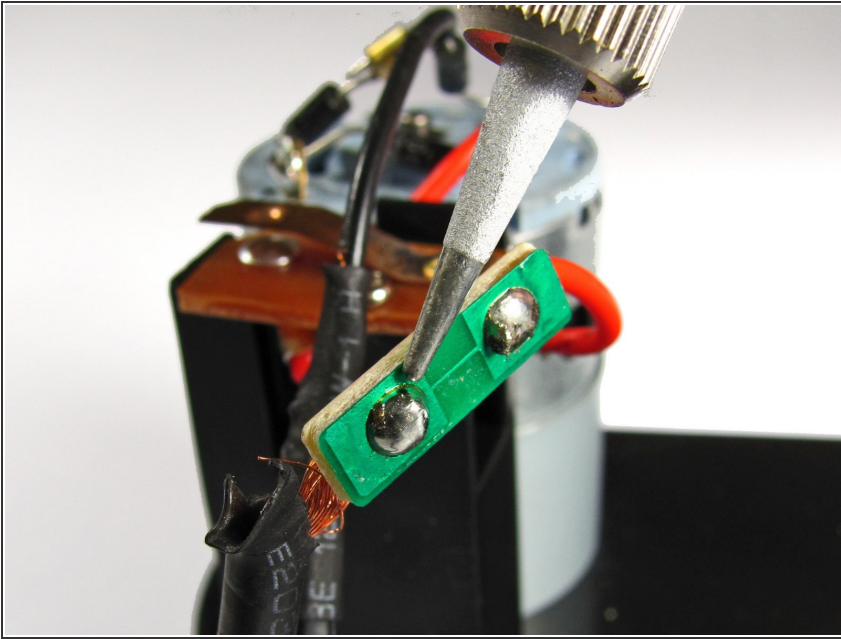
- Carefully cut into black wire casing for both wires using a small knife and peel away the black casing.

⚠ Only cut deep enough to remove the casing.

🔧 For reassembly you will need black electrical tape to keep the wires from being exposed.

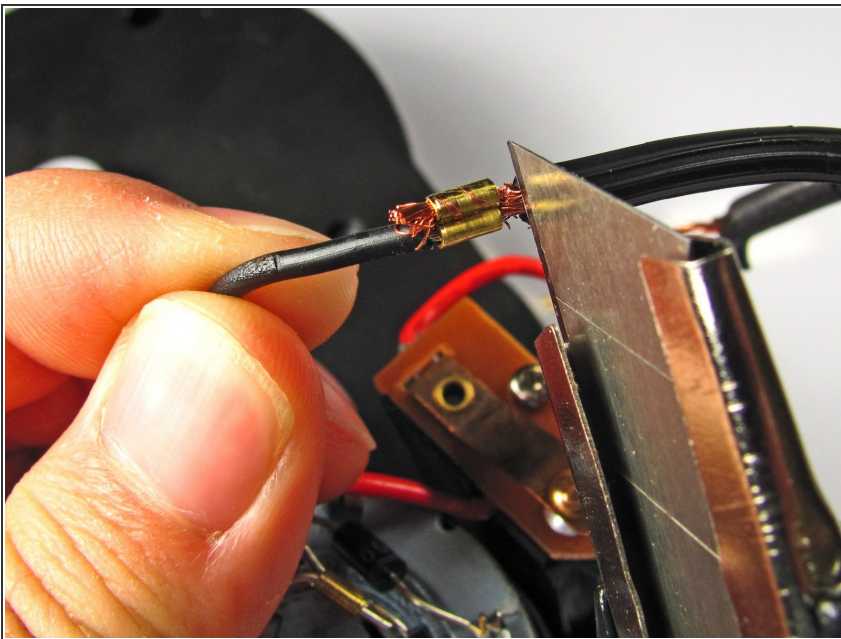
This document was generated on 2020-11-22 10:20:39 PM (MST).

Step 15



- Using a soldering kit, remove the solder for the black power cord from the circuit board.
- Follow this [soldering guide](#) if you need extra help!

Step 16



- Use a small knife to cut the copper wires from the bracket holding the black wire and power cord together.
- ✦ For reassembly the copper wires will need to be soldered together.

To reassemble your device, follow these instructions in reverse order.