



Apple Wireless Keyboard Logic Board Replacement

This is a guide to replace the logic board of a Apple Wireless Keyboard

Written By: Nicola



INTRODUCTION

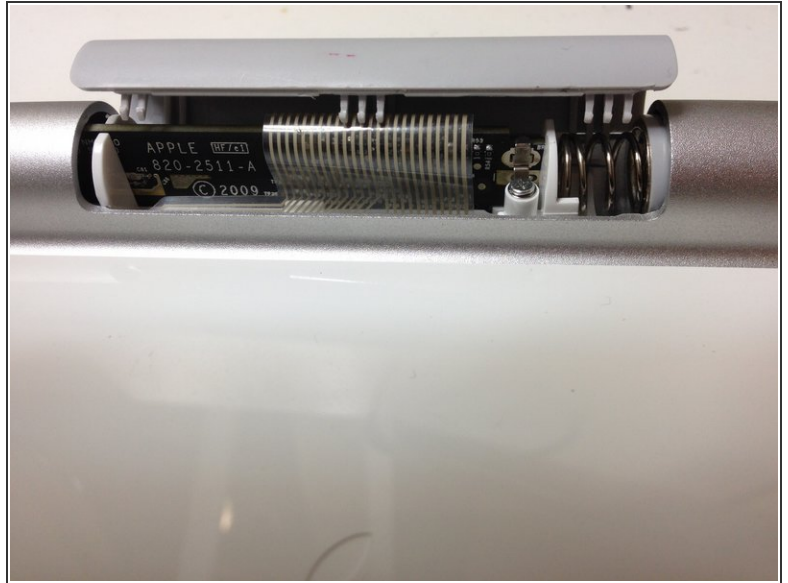
You need a Metal spudger and a screwdriver



TOOLS:

- [Phillips #2 Screwdriver](#) (1)
 - [Metal Spudger](#) (1)
-

Step 1 — Logic Board



- Insert a metal spudger to open the plastic part under the Keyboard

Step 2



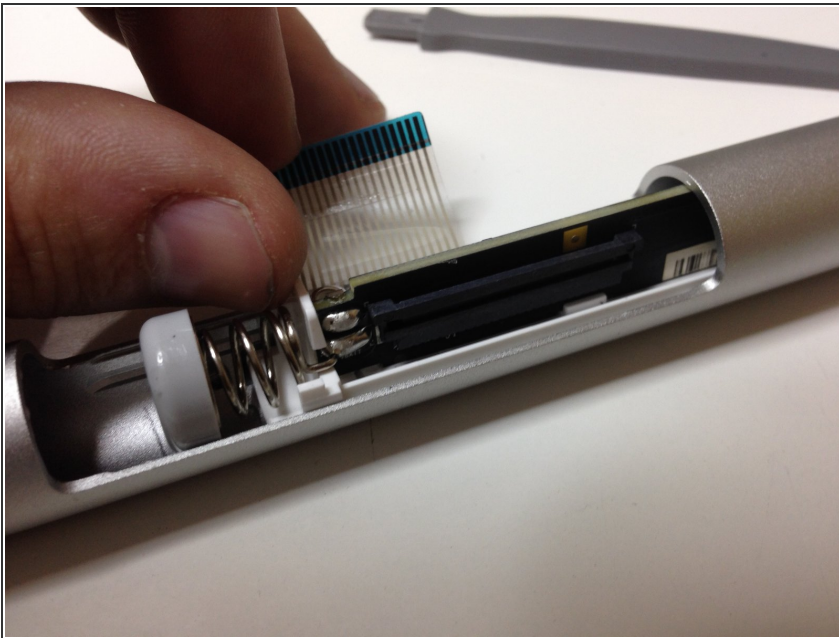
- Remove the screw

Step 3



- Pull the lock up and disconnect the connection cable

Step 4



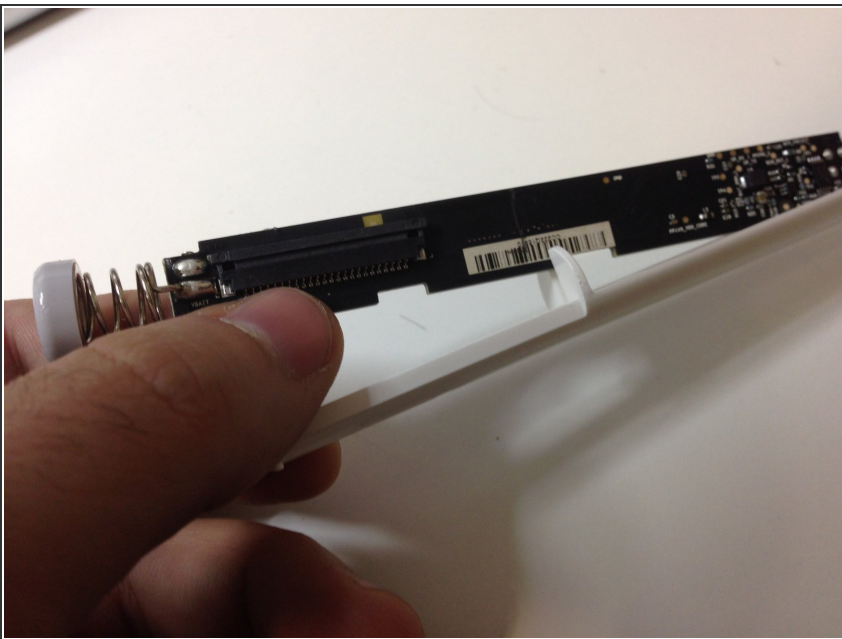
- Keeping the connection cable, push out the logic board's placement

Step 5



- Unlock the latch of the logic board

Step 6



- Remove the logic board from the placement

To reassemble your device, follow these instructions in reverse order.