



HP iPAQ H2200 faceplate replacement

Written By: Tyler Andrews



INTRODUCTION

The purpose of this guide is to instruct the reader on how to replace the faceplates of their HP iPAQ H2200 device.

TOOLS:

- [Phillips #00 Screwdriver](#) (1)
 - [T5 Torx Screwdriver](#) (1)
-

Step 1 — Battery



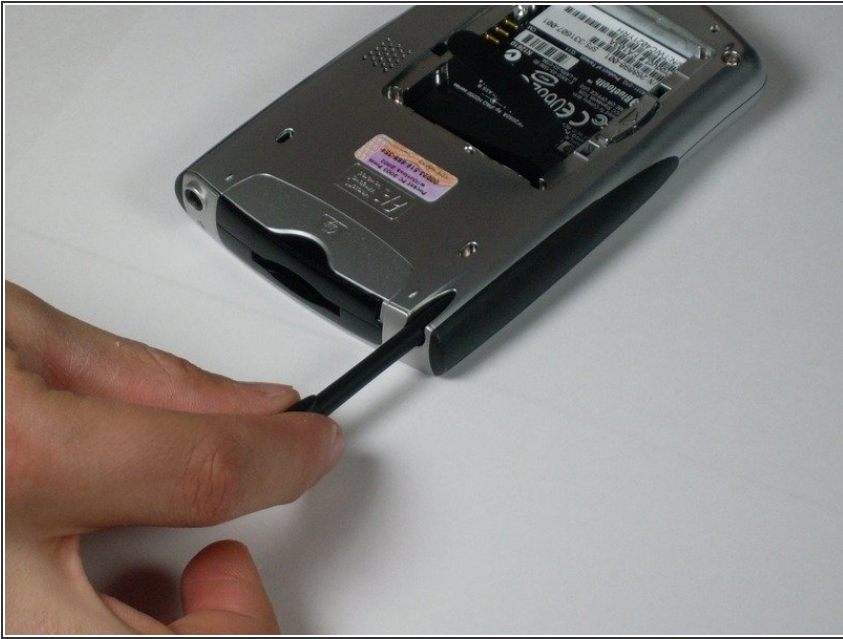
- Press and slide the battery cover tab to remove battery cover.

Step 2



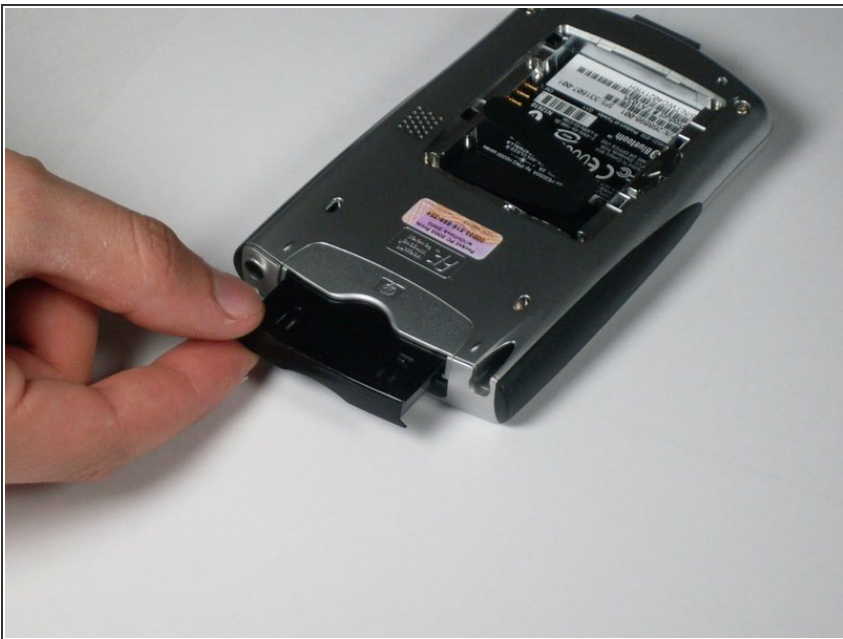
- Pull on the black tab to lift the battery out of the battery compartment.

Step 3 — Main Board



- Remove the stylus by sliding it out of the slot.

Step 4



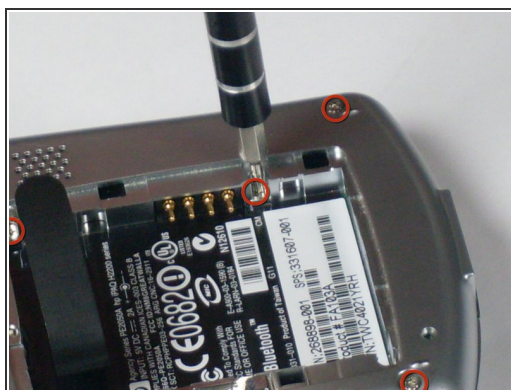
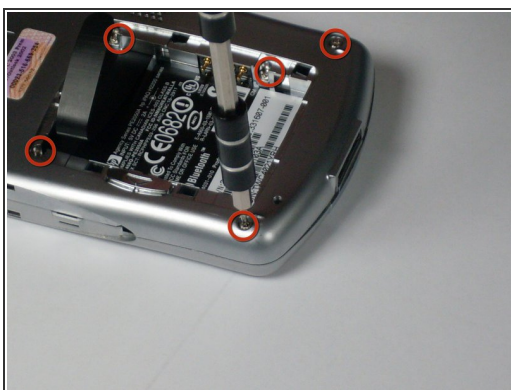
- Remove the CF card by sliding it out of the slot at the top of the device.

Step 5



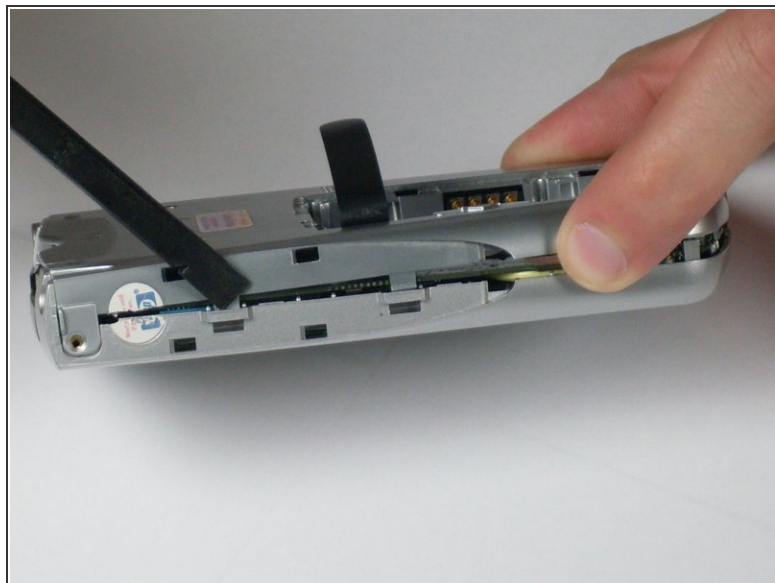
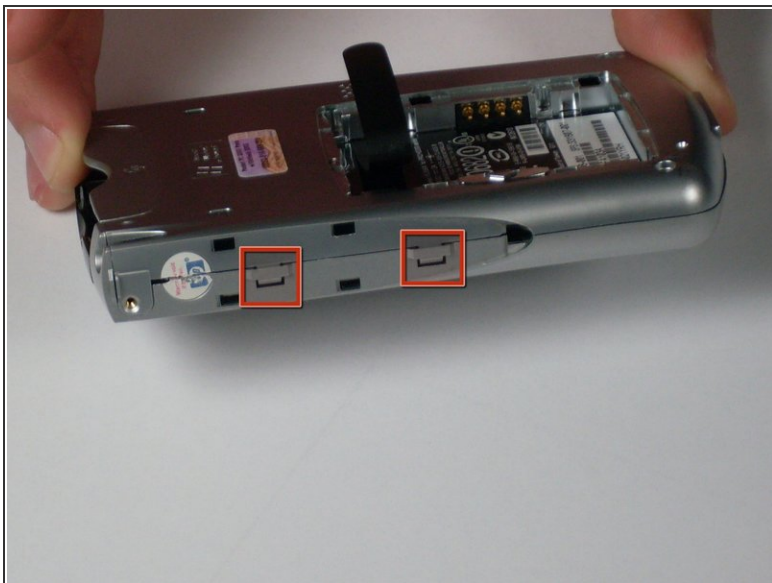
- Press down and push the black side strips toward the top of the device to remove them.

Step 6



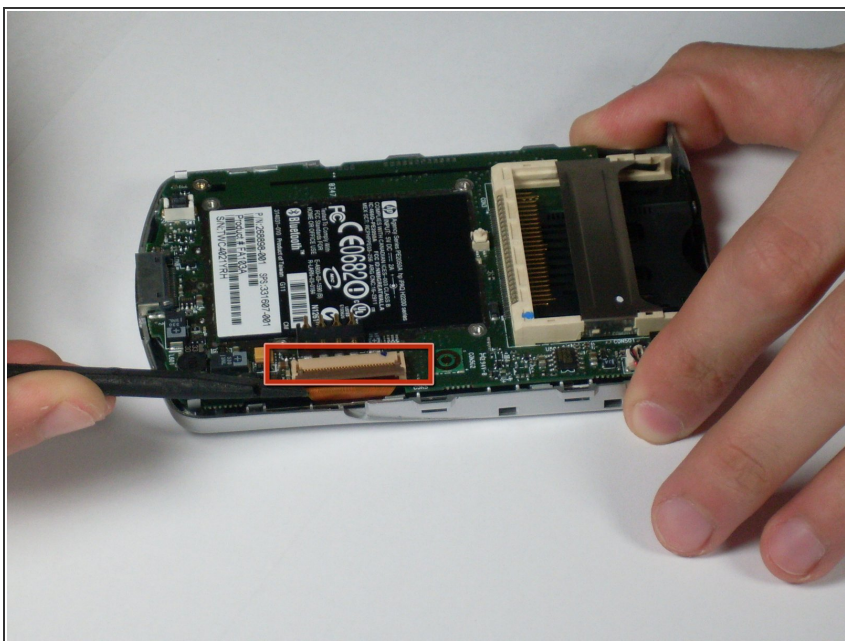
- Using the T5 Torx screwdriver, remove all six screws on the back and all screws on each side of the device.

Step 7



- Remove the back faceplate by pushing and loosening the 4 side slots (2 on each side).

Step 8



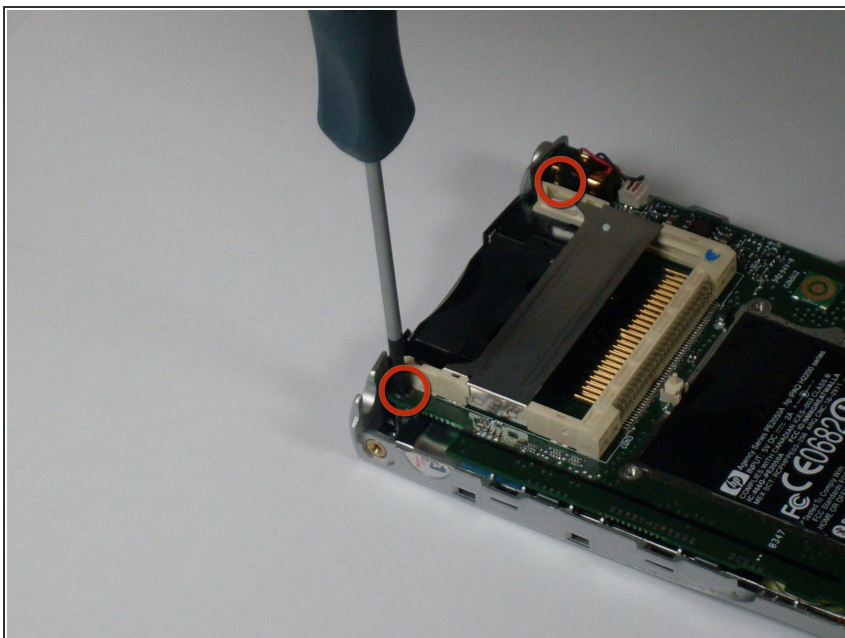
- Open the LCD connector, where the orange strip attaches to the main board.

Step 9



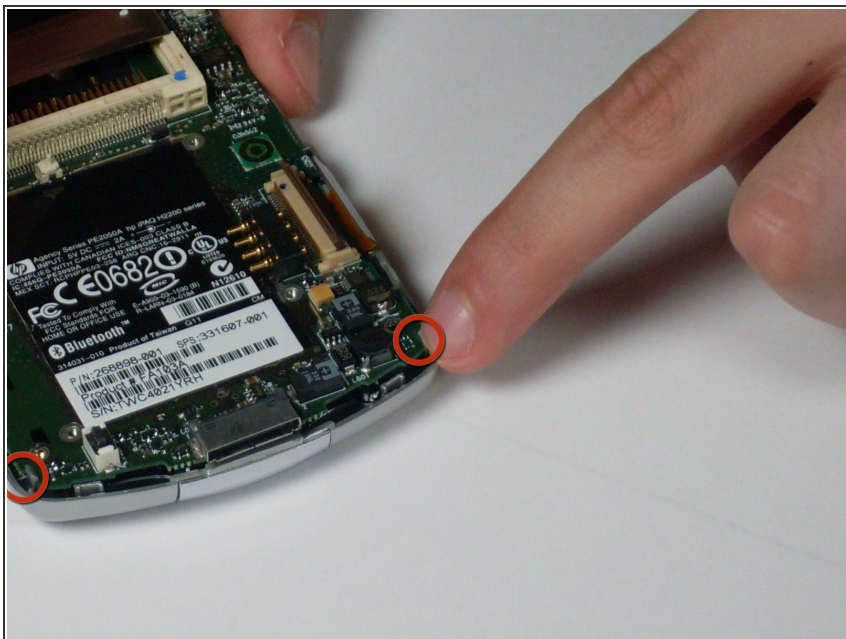
- Carefully remove the orange LCD strip from the connector.

Step 10



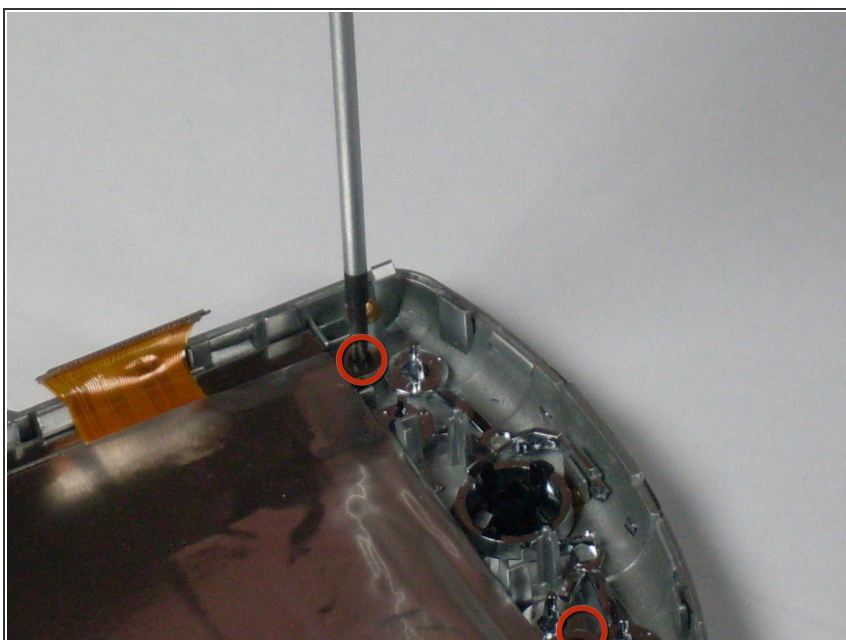
- Unscrew the 2 screws located at each top corner of the main board.

Step 11



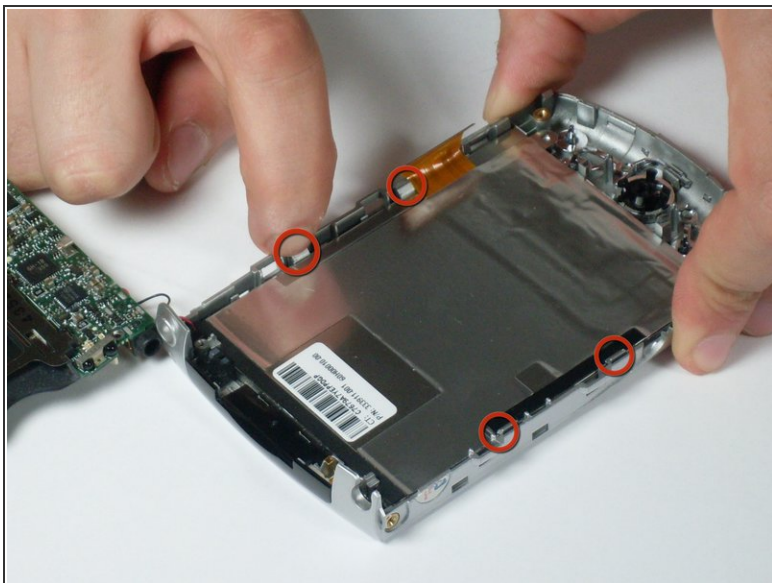
- Remove the main board by pushing outward on the two tabs located on each side near the bottom of the device.

Step 12 — LCD Screen



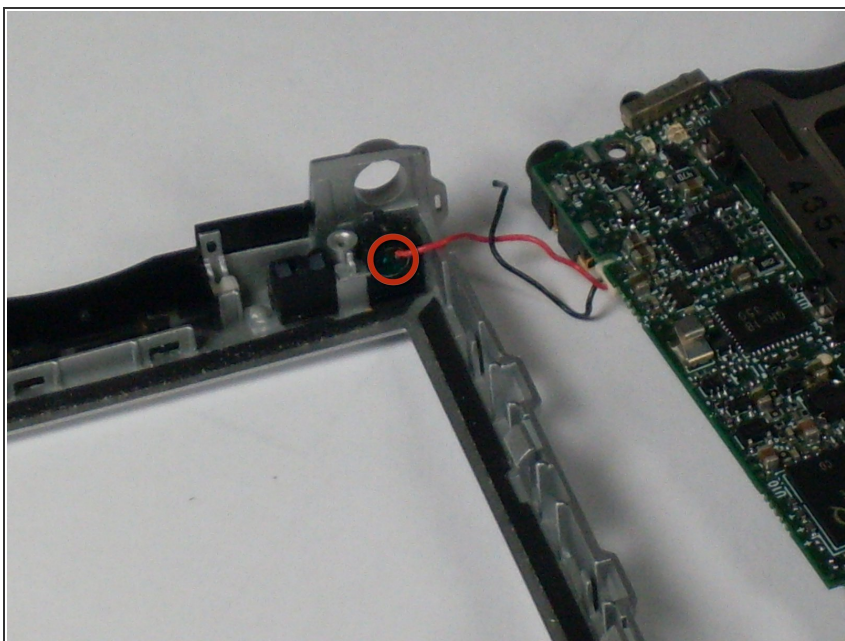
- Unscrew the two bottom screws on LCD screen that were previously located under the main board.

Step 13



- Press on side tabs to loosen and remove the LCD screen.

Step 14 — Faceplates



- Remove the faceplate by unscrewing the green screw located on the top right of the front faceplate.

To reassemble your device, follow these instructions in reverse order.