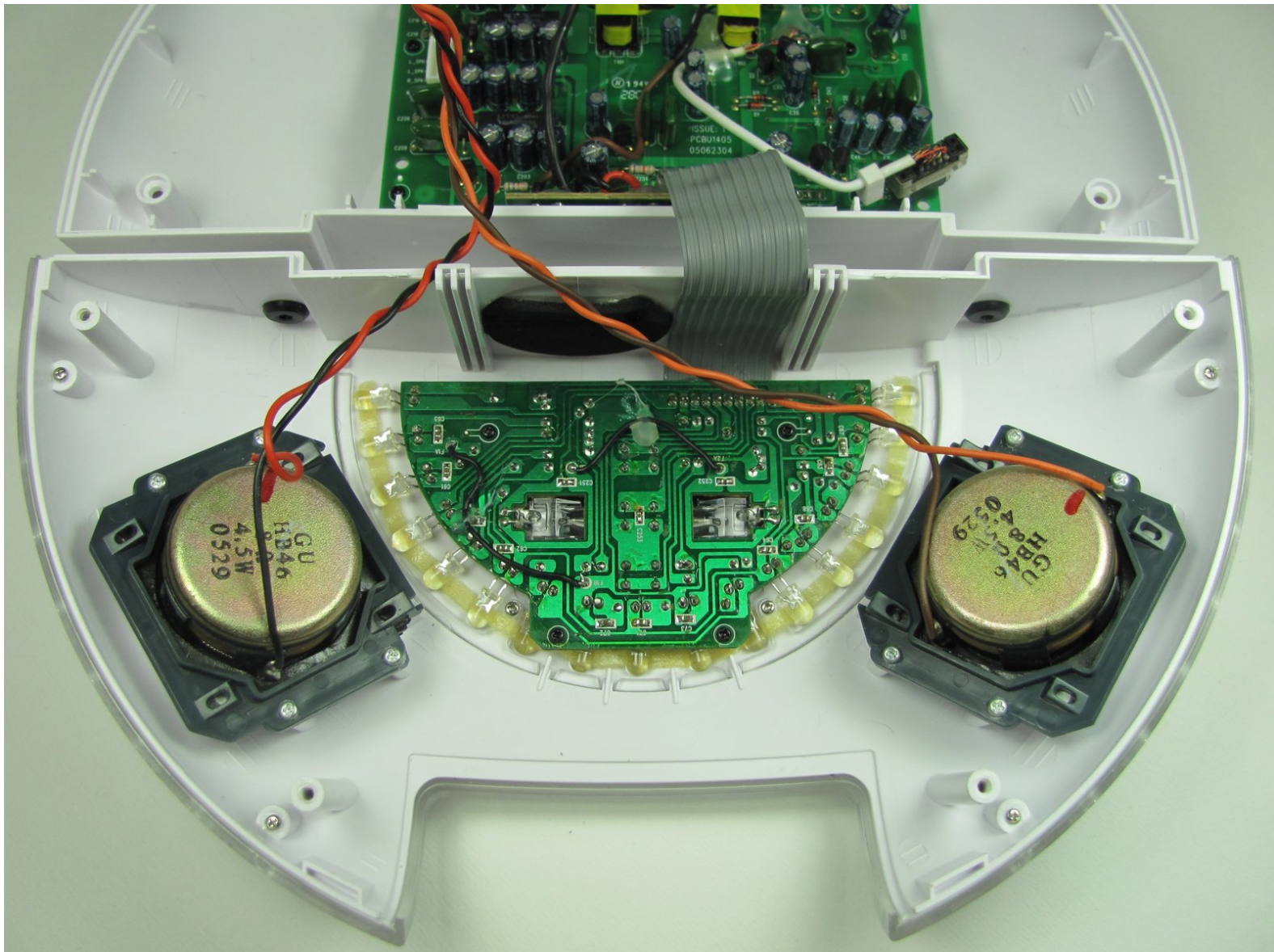




# Sharper Image iPulse SI325 Speakers Replacement

Use this guide to remove the iPulse speakers.

Written By: Melissa Pasa



---

## INTRODUCTION

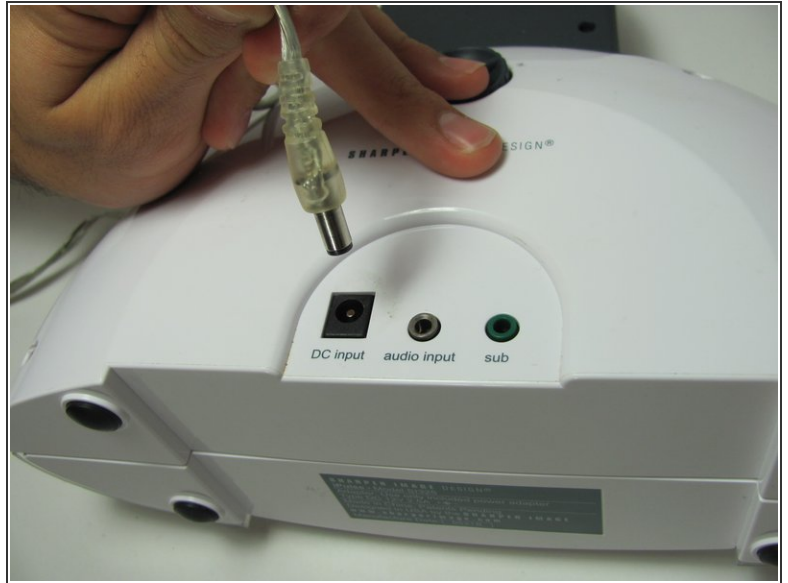
This guide will demonstrate how to remove the two speakers located in the front of the device. Only minimal disassembly is required.

---

### TOOLS:

- [Phillips #1 Screwdriver](#) (1)
  - [Phillips #2 Screwdriver](#) (1)
-

## Step 1 — Outer Case




- Gently position the device so that the buttons and speakers lie face down.
- Unplug the power cord from the "DC Input."


## Step 2




- Remove the four 12mm phillips head #2 screws located along the outer edge of the white case.

 Be careful! There are two small, easily-broken, plastic tabs at the bottom of the device keeping it together.

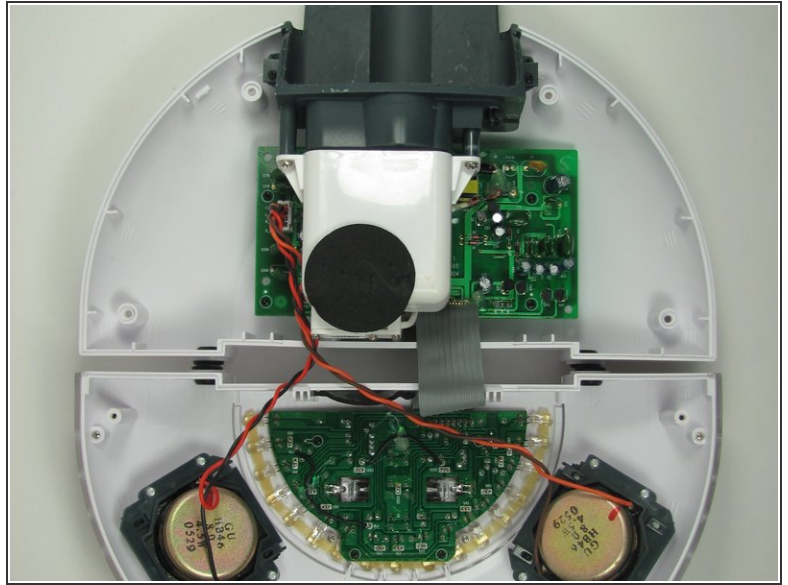
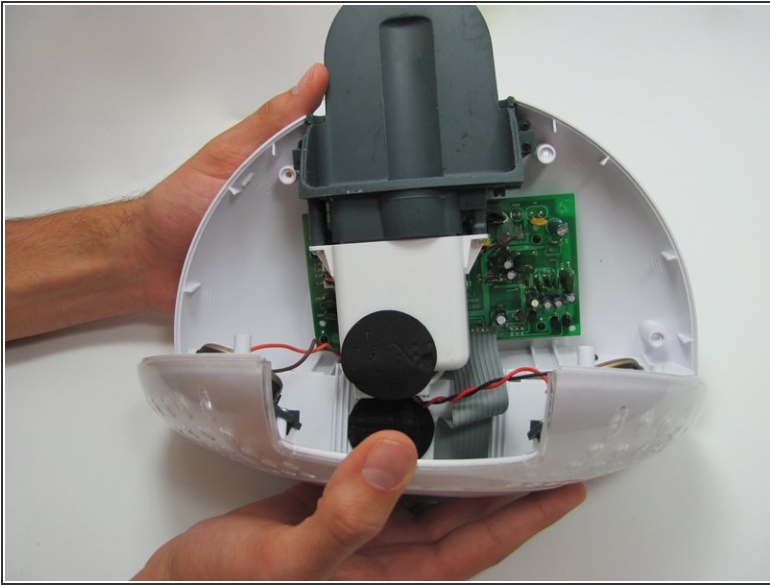
- Once you remove the screws, pick the device up so that the grey label on the bottom of the device faces toward you.
- With your thumbs on either side of the grey label, slowly push with both thumbs until the case pops open.

 A small gap will open as the two tabs are released.

 Do not pull the two halves apart yet. They are held together by the speaker wire.

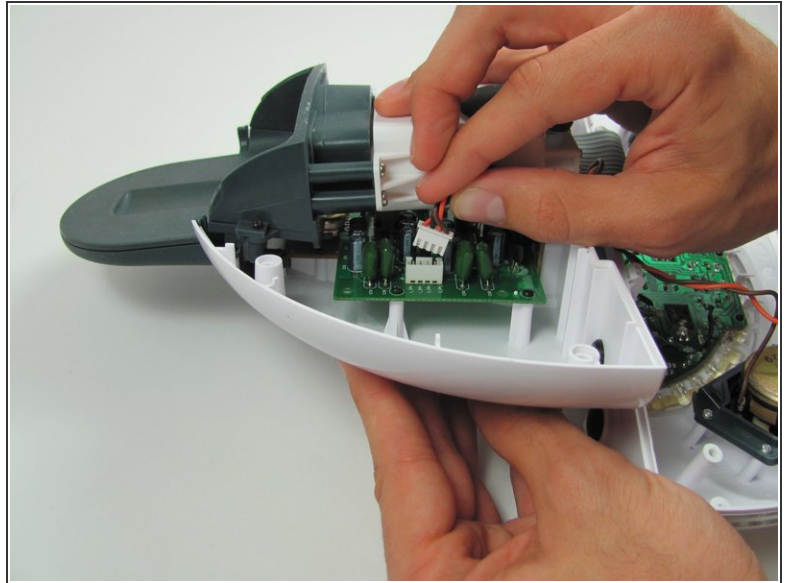
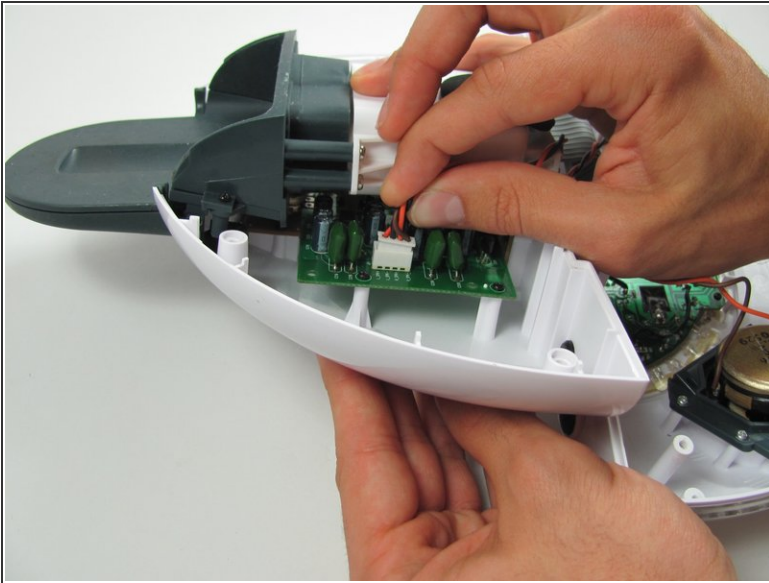


## Step 3



- Grip both sides of the top round part of the case and carefully open it like a clam. The bottom of the two halves are connected by the speaker wire. Do not separate by more than 1 centimeter.
- Grip either side of the top round part of the case and carefully open the device to reveal all the hidden treasures inside!
- Lay the device down, so that all the internal components are facing upwards.

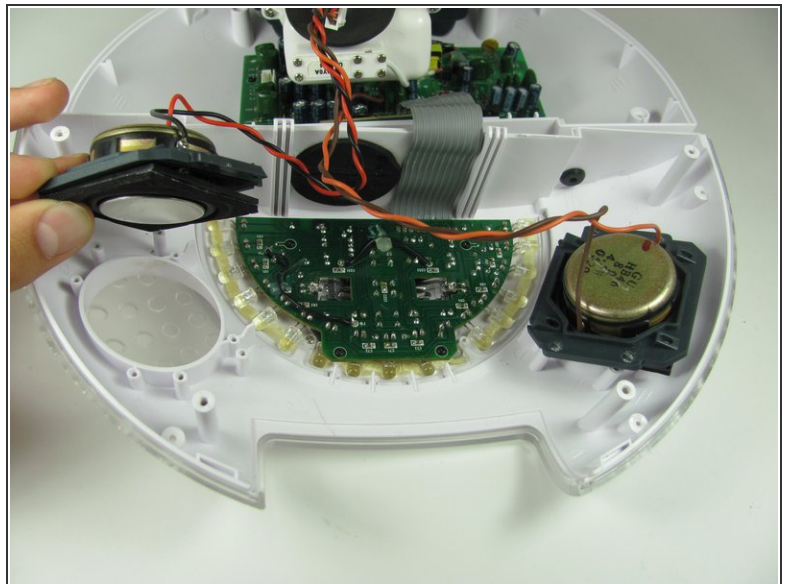
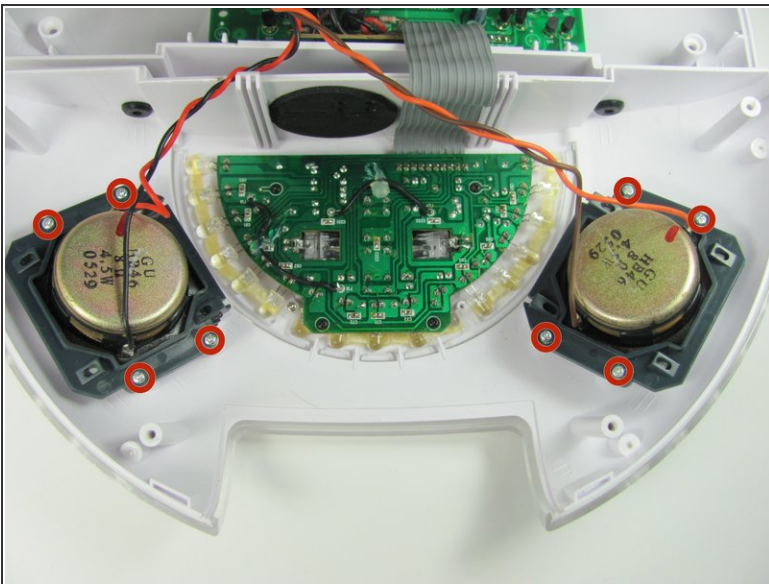
## Step 4 — Speakers



- Disconnect the speaker wire from the motherboard by firmly gripping the black and red wires close to the connection with two fingers and pulling the connector out.

i Wiggling the connector back and forth as you pull will make removal easier.

## Step 5



- Remove the eight 11mm Phillips #1 screws that connect the speakers to the white outer case.

To reassemble your device, follow these instructions in reverse order.