



# Dell Precision T3400 Video Card Replacement

This guide provides the necessary steps to...

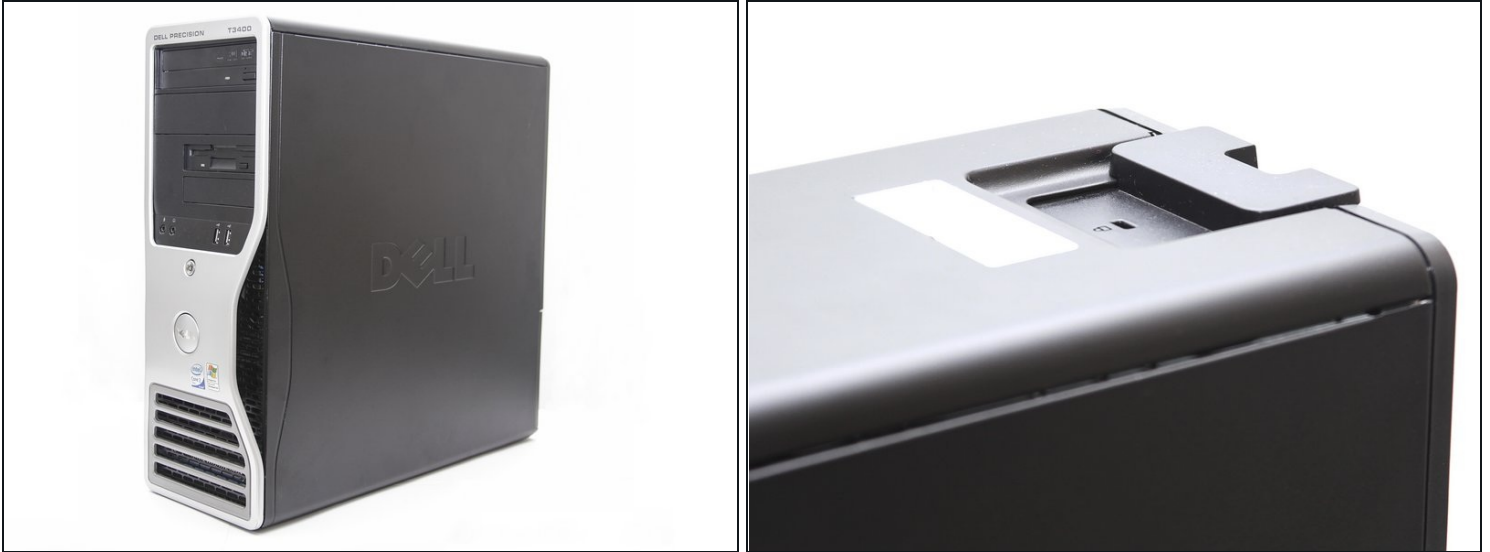
Written By: Josette Cormier



# INTRODUCTION

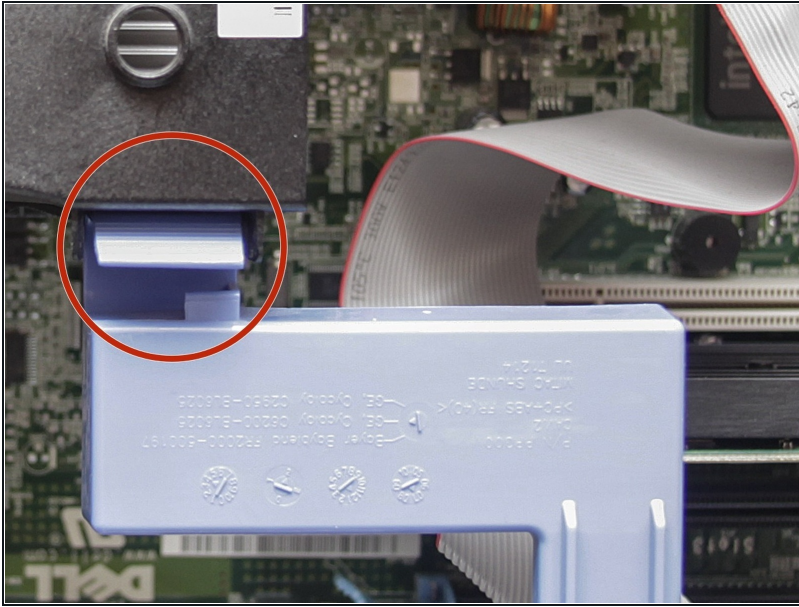
This guide provides the necessary steps to successfully replace the video card in the Dell Precision T3400 desktop computer.

## Step 1 — Remove the computer's side panel.



- Lay the computer on its side so the panel faces up.
  - Push the cover release latch at the back of the computer's case. The cover should pop off and away from the computer.
- ⓘ Make sure the computer is on its side before you begin replacing any parts.

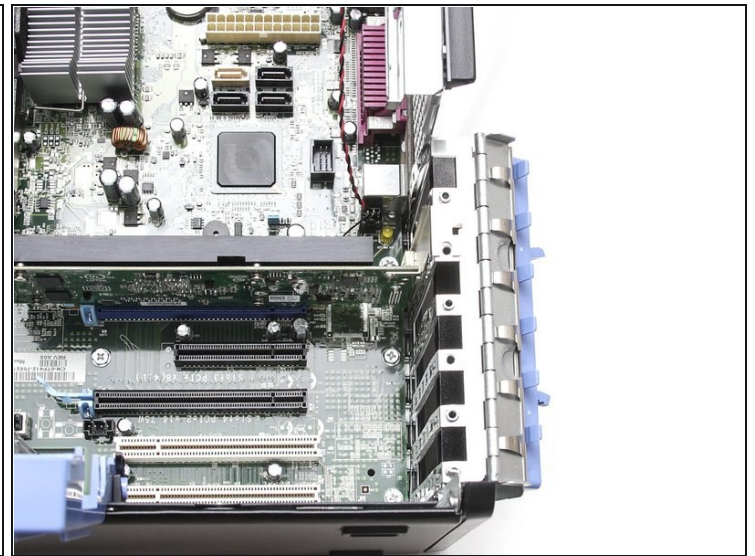
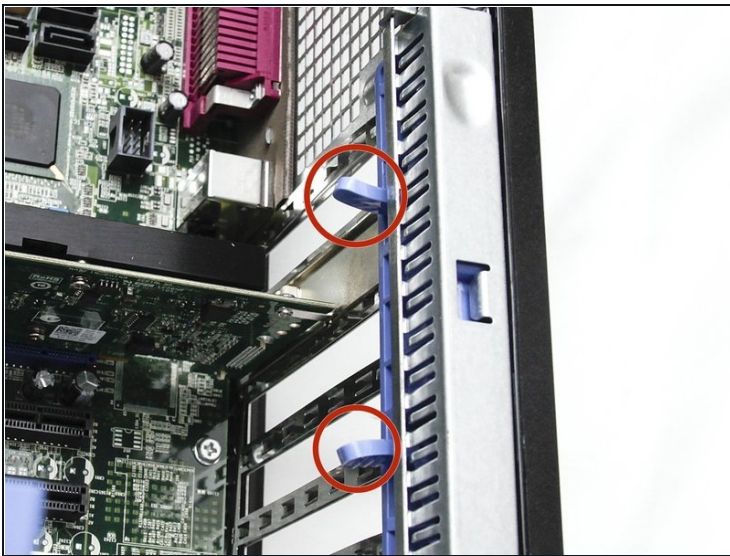
## Step 2 — Move the heat-sink assembly lever out of the way



- Push the tab on the blue plastic secure lever and pivot the lever down and away from the assembly

⚠ Make sure you ground yourself to prevent static discharge

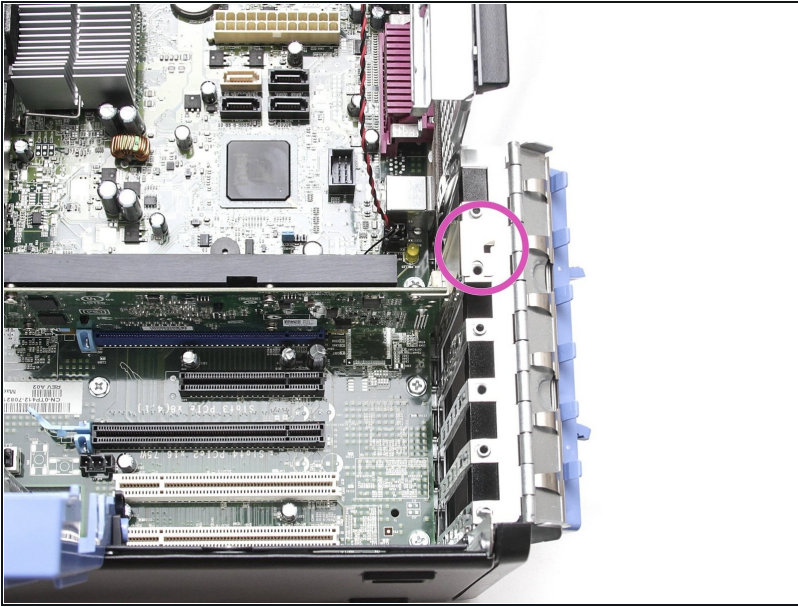
## Step 3 — Open the video card secure hatch.



- Squeeze the two release tabs together and pivot the secure hatch to the right to open.

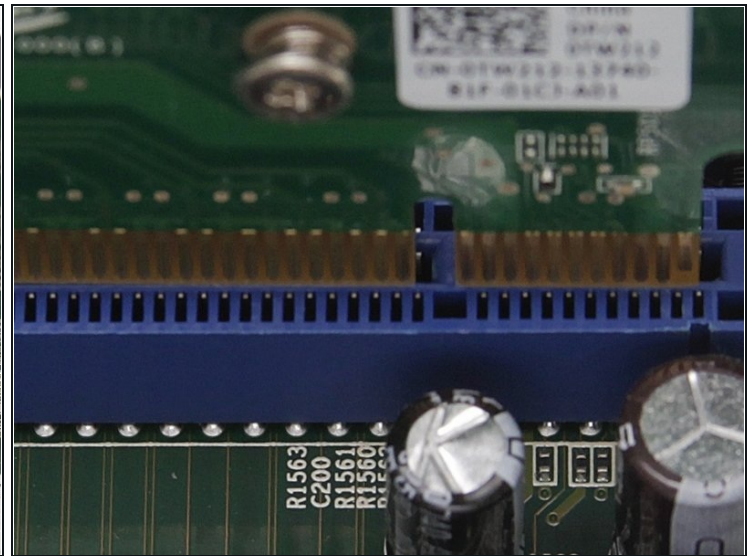
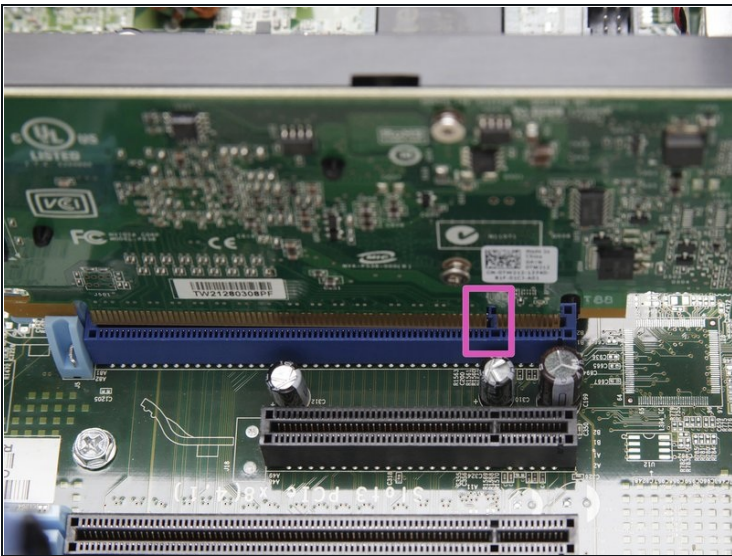


## Step 4 — Remove the video card



- Hold the card by its top corner and **metal bracket** and pull it out of its slot.

## Step 5 — Install the new video card



- Match the new card's connectors with the notches in the slot and gently push it into place. The card should click into position when inserted correctly.
- Close the card door and move the blue plastic secure lever back into place.\

⚠ Ensure that the card you are replacing the existing card with meets wattage and connectivity requirements. Do not force a card into the slot.

---

To reassemble your device, follow these instructions in reverse order. Step 1: Install new card and latch it in place. Step 2: Reinstall the side panel. Step 3: Plug everything back in