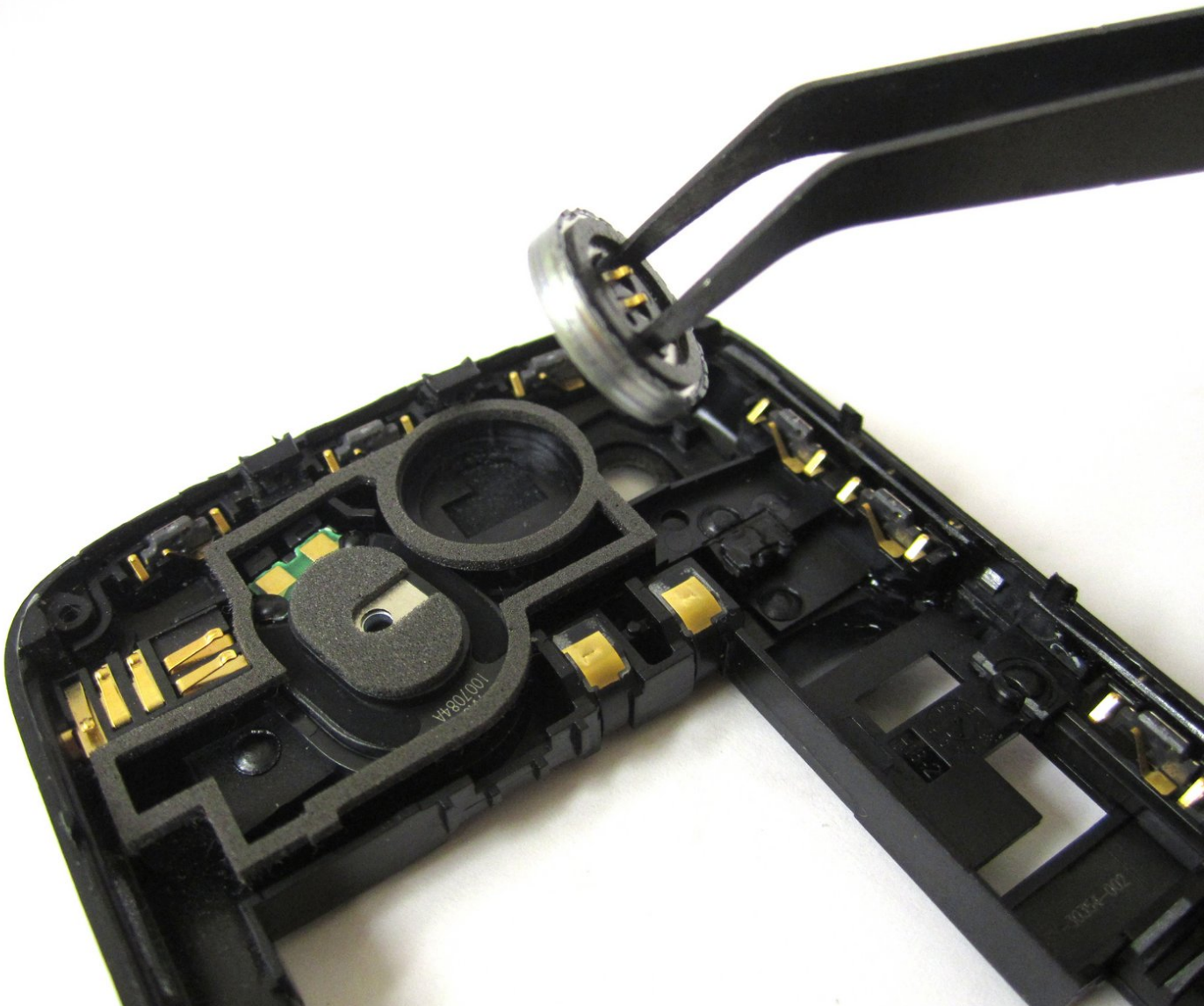




Blackberry Curve 9300 Speaker Replacement

Guide to Replace Speaker

Written By: Alek Squires



INTRODUCTION

This Speaker Replacement guide was written to help consumers fix their device as easy as possible. The steps show the steps required to replace the speaker.



TOOLS:

- [T6 Torx Screwdriver](#) (1)
 - [iFixit Opening Tools](#) (1)
 - [Tweezers](#) (1)
-

Step 1 — Battery



- Place your BlackBerry face down in front of you.

Step 2



- Locate the indent on the bottom of the back cover.
- Use your fingernail to lift and remove the back cover.

Step 3



- From the top, use your fingernail to lift and remove the battery.

Step 4 — Keyboard



- Use the T6 Torx screwdriver to unscrew the two 5mm screws highlighted.

Step 5



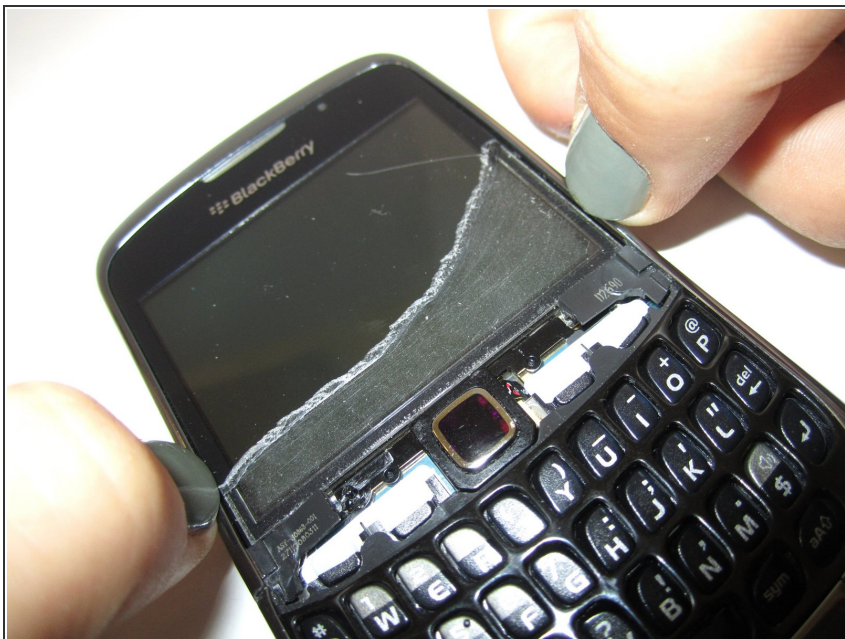
- Place the phone face up and use tweezers to securely grip and lift the screen upwards.

Step 6



- Use a plastic opening tool to lift the bottom edge of the front cover.

Step 7



- Use your nails to unclip the sides of the frame from the phone.

Step 8



- Lift and remove the frame.

Step 9



- Lift and remove the keyboard.

Step 10 — Speaker



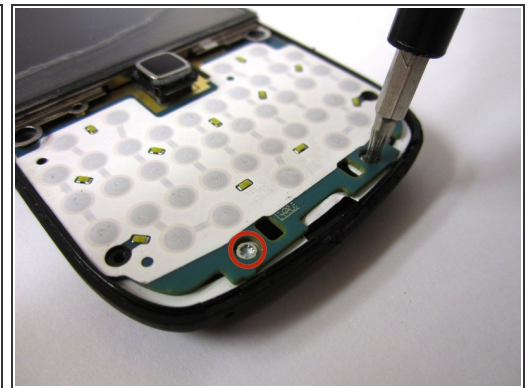
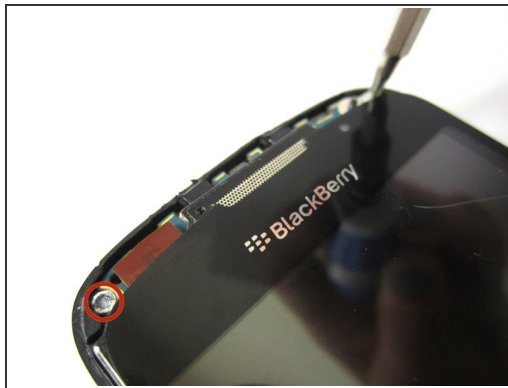
- Locate and remove the two 5mm screws on top of the keyboard base with a T6 Torx screwdriver.

Step 11



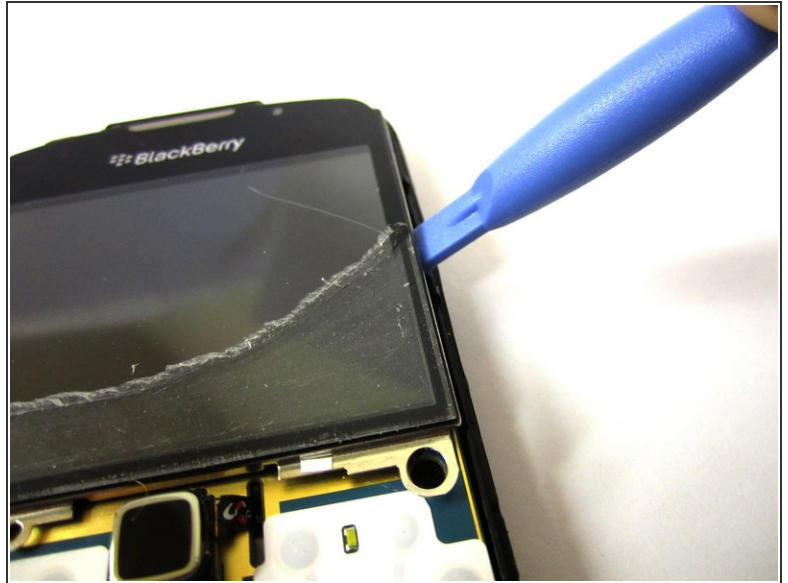
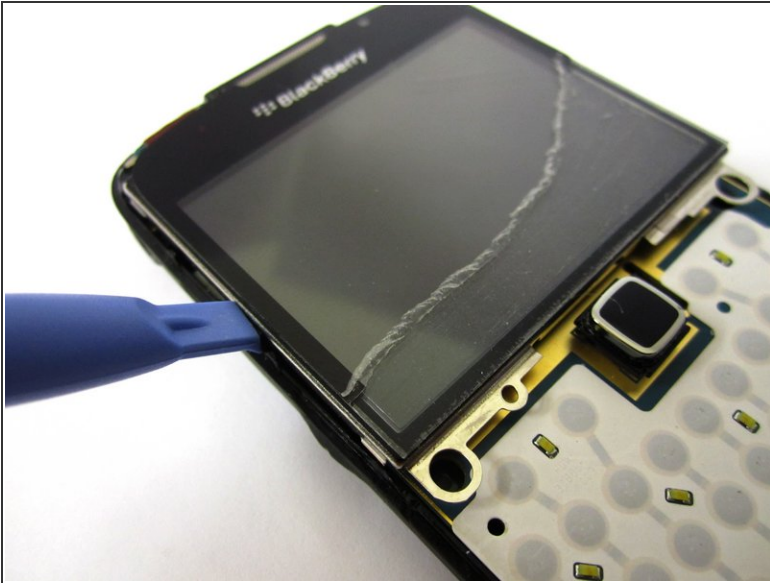
- Carefully pull keyboard base up and away from phone.
- Disconnect keyboard base from phone completely.

Step 12



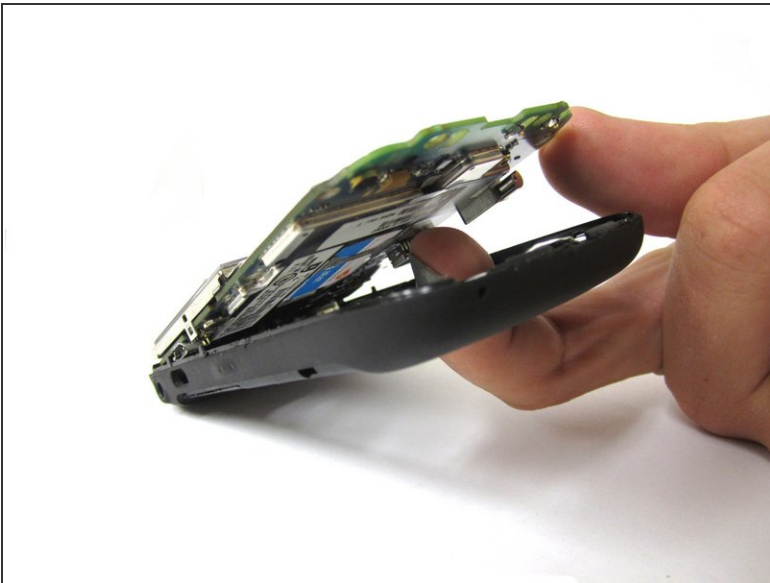
- Remove the four 5mm screws on the top and bottom of phone with a T6 Torx screwdriver

Step 13



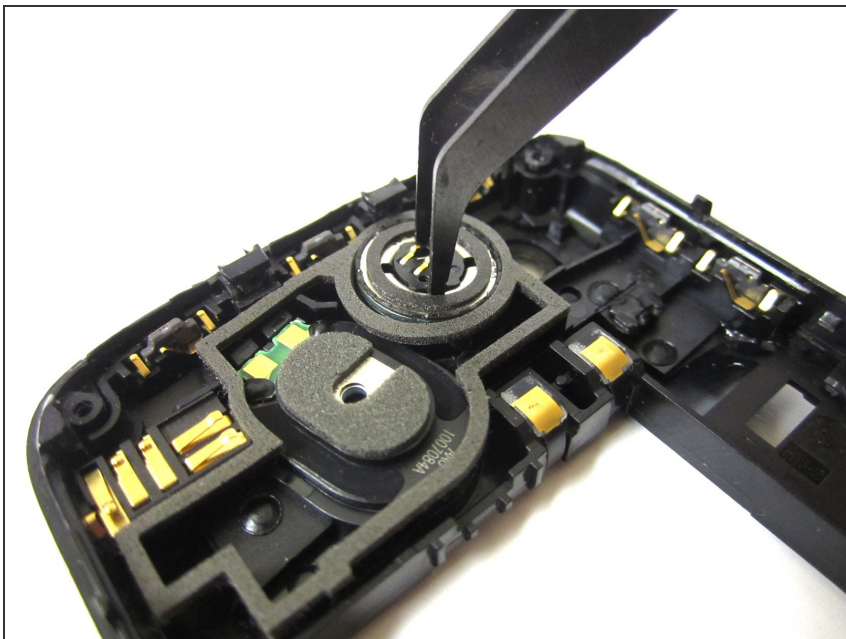
- Using a prying tool, find the crease below the screen.
- Insert where shown and use the tool to unclip the two sides of screen from body.
- ⓘ Prying tool goes approximately midway between the top and bottom edge of the screen.

Step 14



- From the back of the phone, use your finger to push the front piece of the phone away from the back piece.

Step 15



- Insert tweezers into the small holes on the top of the speaker.

Step 16



- Lift the speaker up to remove the speaker from phone.

To reassemble your device, follow these instructions in reverse order.