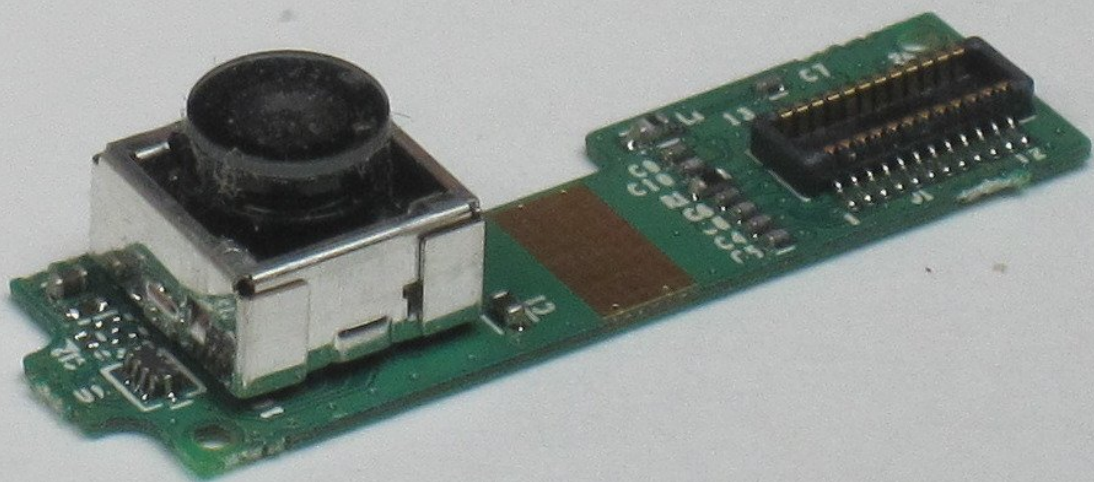




Motorola V325 Camera Replacement

Written By: Felipe Alfaro



INTRODUCTION

If the camera on your phone is broken you are going to want to replace it. Follow these steps for a successful replacement.



TOOLS:

- [T6 Torx Screwdriver](#) (1)
-

Step 1 — External Casing



- Remove the rearmost panel by pushing down on the silver button, then simultaneously pulling downward on the panel.
- Lift the panel off of the phone.

Step 2



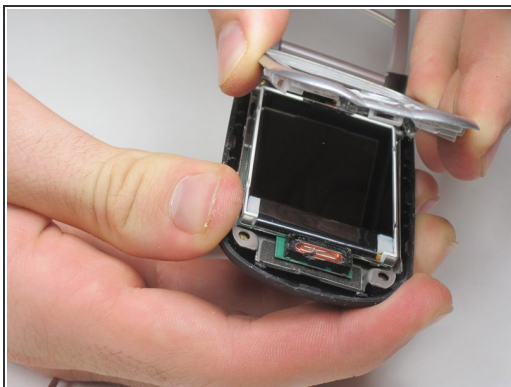
- Using your thumbnail or a thin flat head screwdriver, peel back the screen protector on the inside of the phone: It is only held on by glue but may take a good amount of force to be removed.

Step 3



- Unscrew the four screws using the T6 Torx Screwdriver.

Step 4



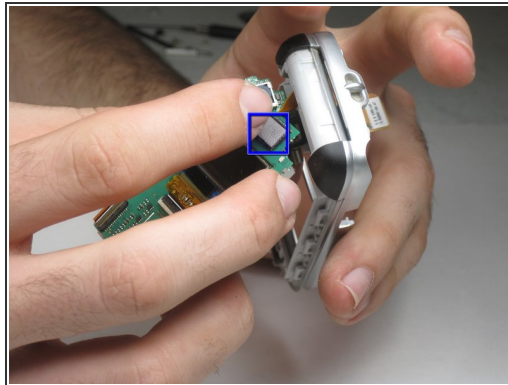
- Peel back the screen protector frame. Close phone at the hinge, then pull off the front outer casing.

Step 5 — Motorola V325 Screen and External Display Disassembly



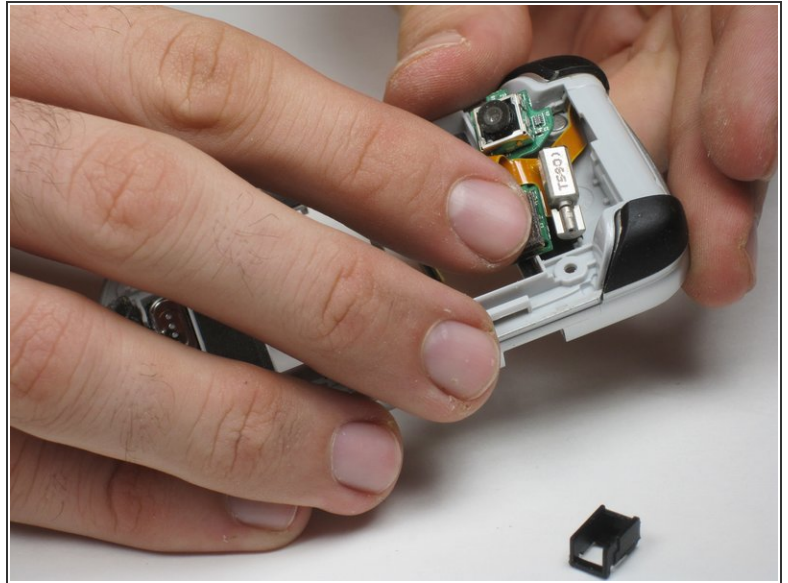
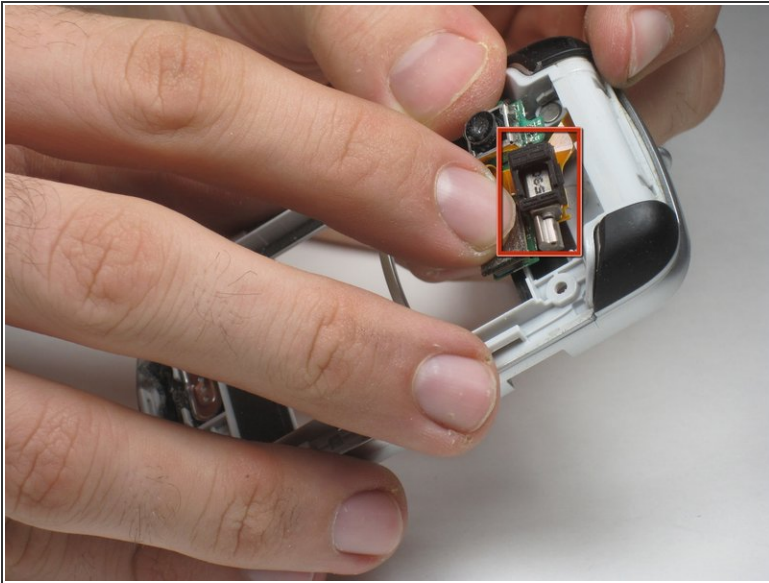
- After removing the external casing, there are no more screws holding on the gray metal plate. Carefully separate the gray plate from the rest of the phone by simply lifting it off.

Step 6



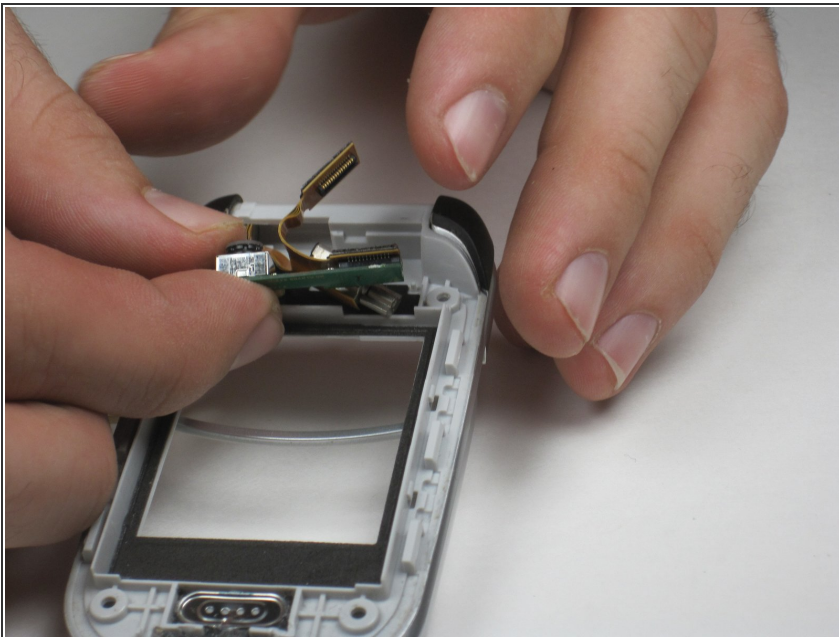
- Next separate the screen from the phone, pulling it away slowly as it will still be attached by a yellow ribbon.
- A yellow ribbon attaches to the area boxed in blue. Unclip the yellow ribbon from the circuit board using your fingers.

Step 7 — Camera



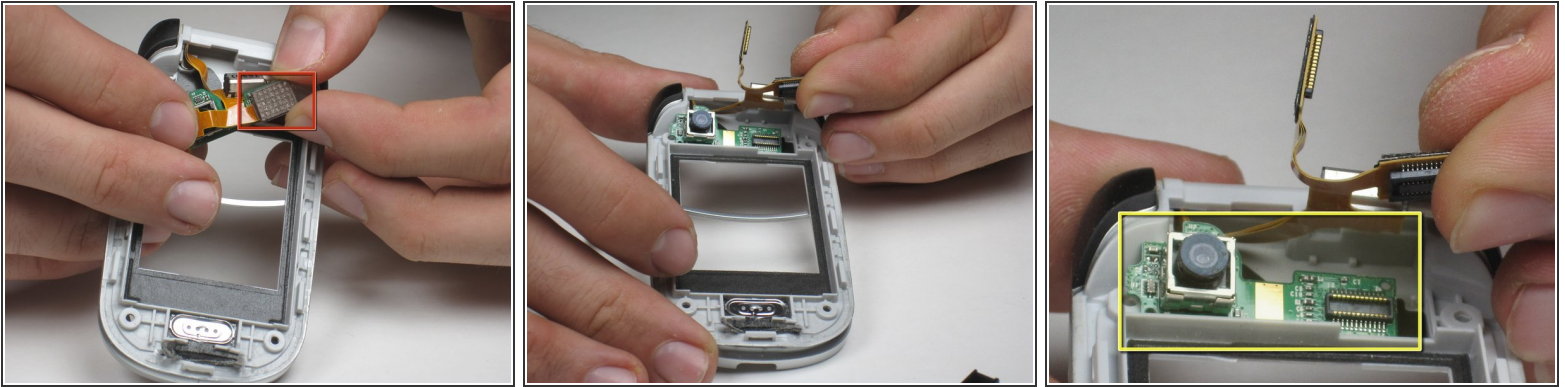
- Remove the cover on the vibrator by simply pulling it off gently.

Step 8



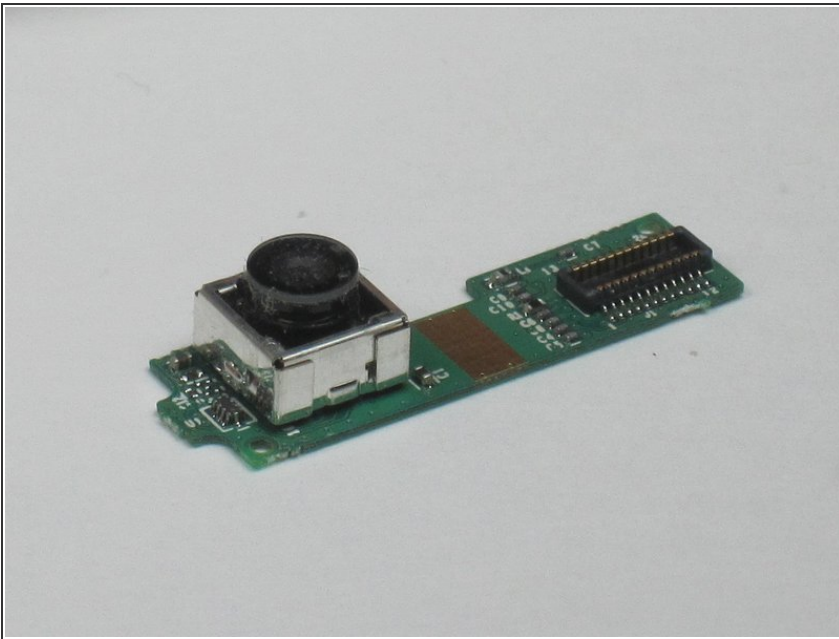
- Pull out the small circuit board where the camera is mounted.
- ⚠ Be careful with the yellow ribbon attaching both sides of the phone. It can break if pulled on too hard.

Step 9



- Detach the clip from the camera's circuit board carefully by pulling them apart with your fingers.
- The camera should now be completely detached as shown here in yellow.

Step 10



- This is the piece that is removed from the phone.
- ⓘ You will need to replace this entire piece for the camera to function properly again.

To reassemble your device, follow these instructions in reverse order.