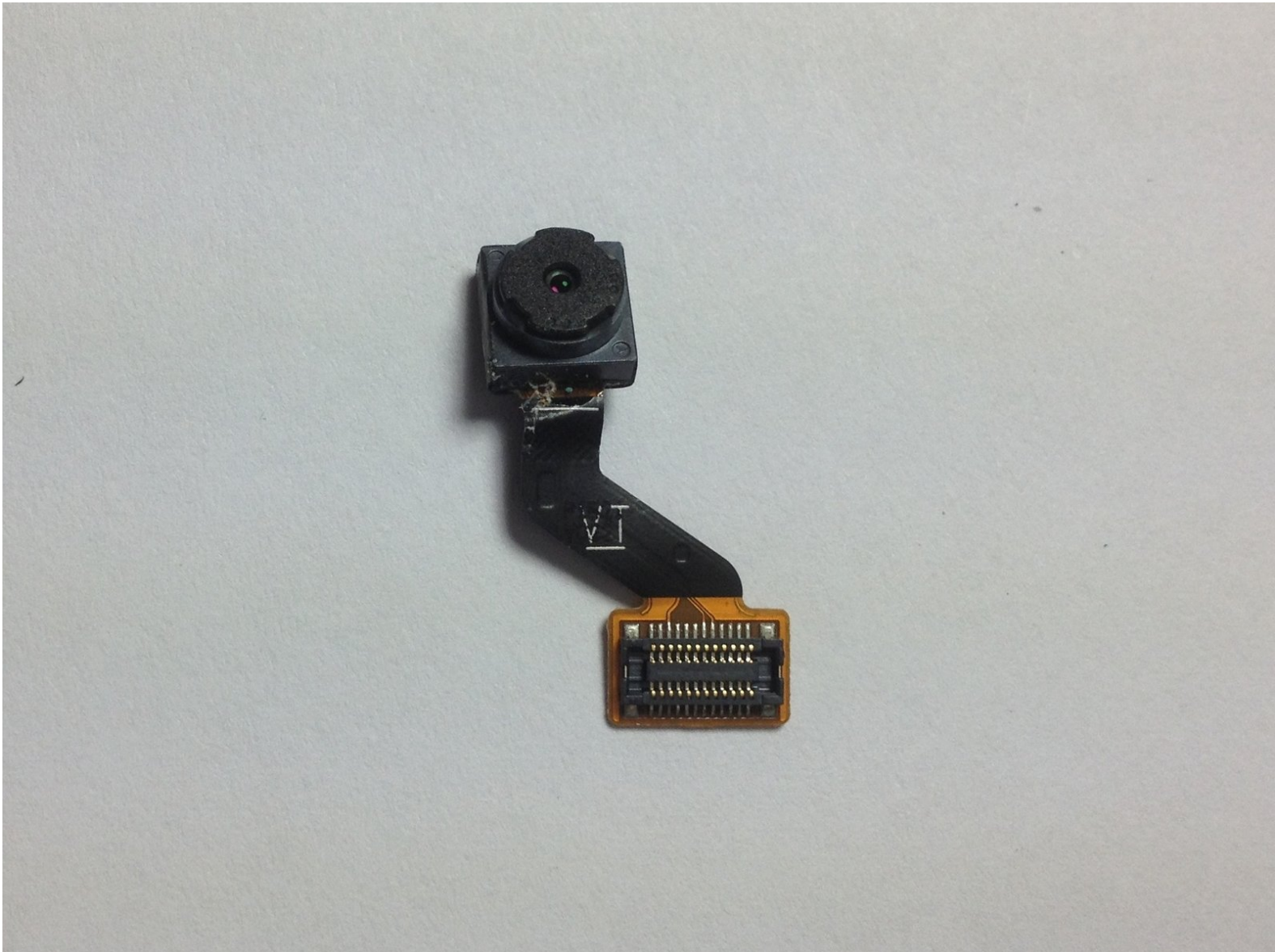




Samsung Galaxy Tab 10.1 Front Facing Camera Replacement

Use this guide to help you replace the front facing camera on the Samsung Galaxy Tab 10.1.

Written By: Davie Sy



INTRODUCTION

In this guide, you will learn how to remove and replace your front facing camera on your Samsung Galaxy Tab 10.1. A broken front camera makes for difficult selfies or video chats. There are a couple of prerequisites to get out of the way first!



TOOLS:

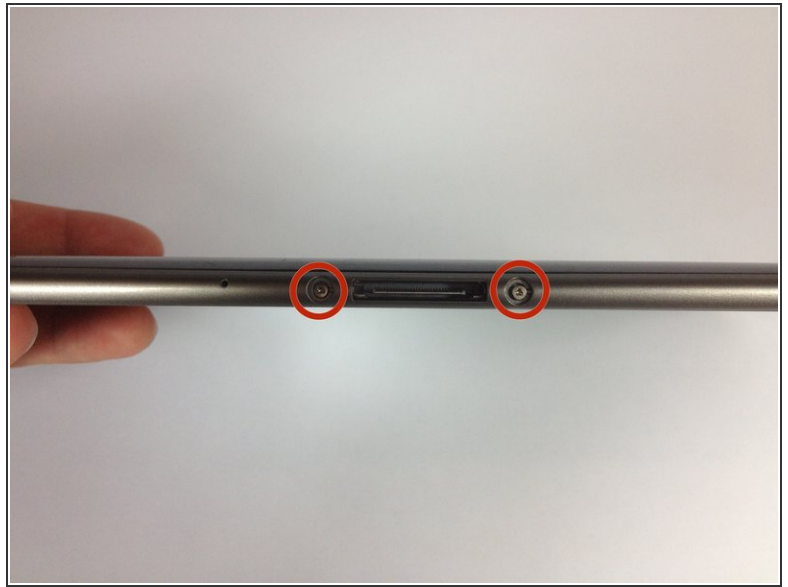
- [iFixit Opening Tools](#) (1)
- [Spudger](#) (1)
- [iFixit Opening Picks set of 6](#) (1)
- [Y1 Tri-point Screwdriver](#) (1)
- [Phillips #00 Screwdriver](#) (1)



PARTS:

- [Samsung Galaxy Tab 10.1 Front Camera](#) (1)

Step 1 — Rear Panel



- Place the bottom of the tablet towards you.
- Remove the 4.1mm screws near the charge port with a Tri-Wing screwdriver.
 - If there are plastic tabs covering these screws, use pointed tweezers to pry the tabs out.
- ⓘ On model GT-P7500, this step is omitted, as that model doesn't have these 2 screws.

Step 2



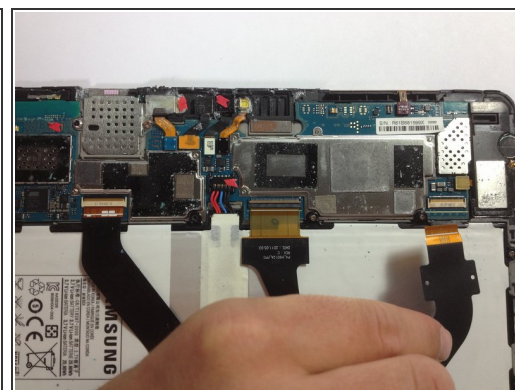
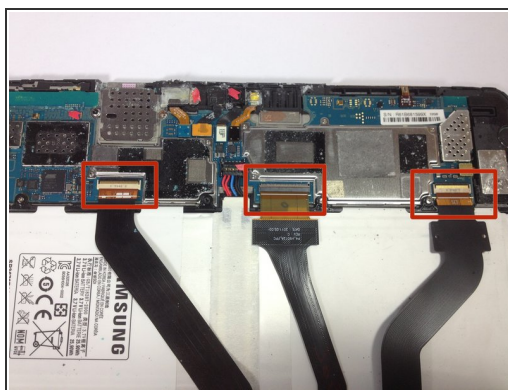
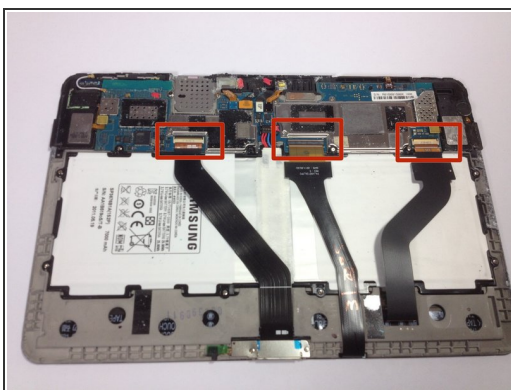
- Start in the middle of the left side and insert a plastic opening tool between the rear panel and the front panel assembly.
 - Carefully run the plastic opening tool along the left and top edge to pry the rear panel away from the rest of the device.
 - ⓘ Place opening picks along the side you have already pried open to keep the back panel detached from the rest of the device.
- ⚠ Be sure to work carefully, as prying too firmly can crack the screen.

Step 3



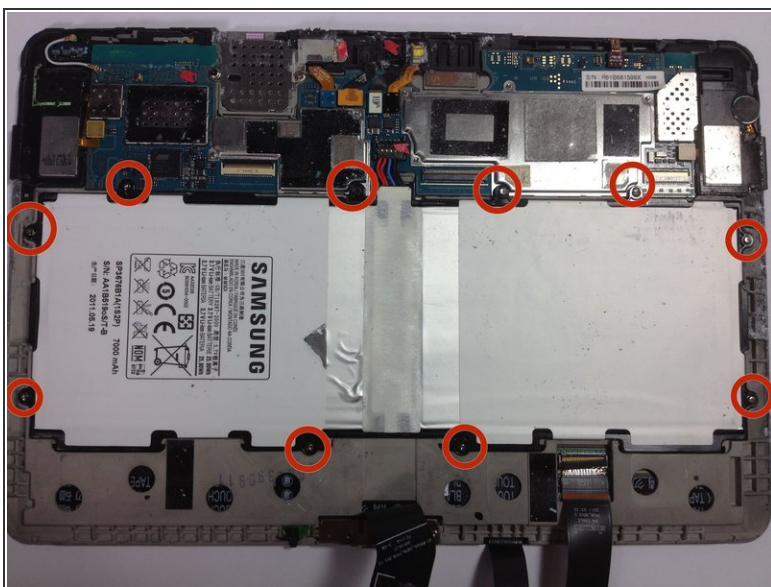
- Using the plastic opening tools, continue to carefully run along the right and bottom edge, and then lift the screen from the back panel.

Step 4 — Battery



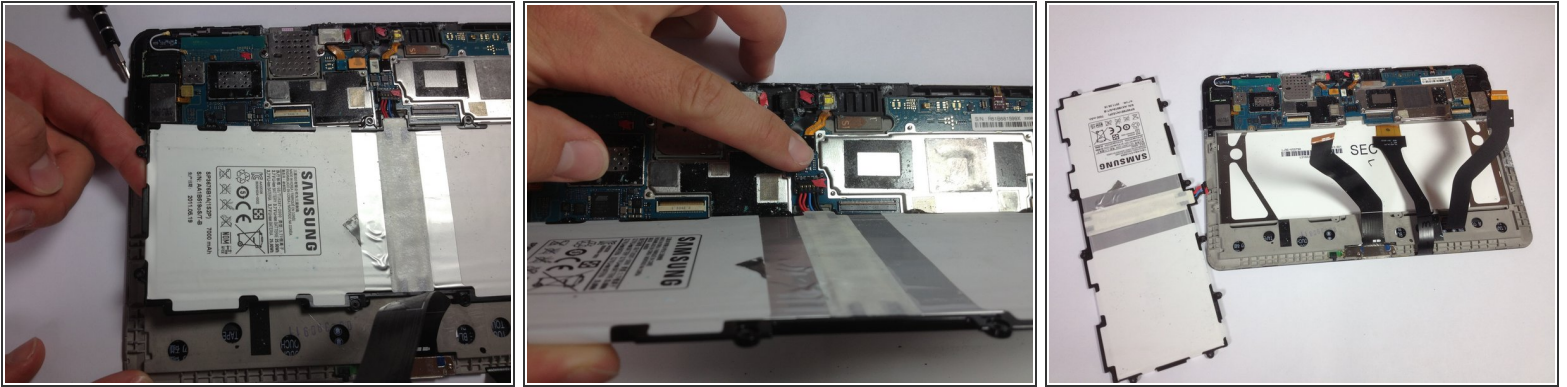
- Flip up the retaining flaps on the ZIF connectors that secure the three large ribbon cables.
- Carefully pull the three ribbon cables from their sockets on the motherboard.

Step 5



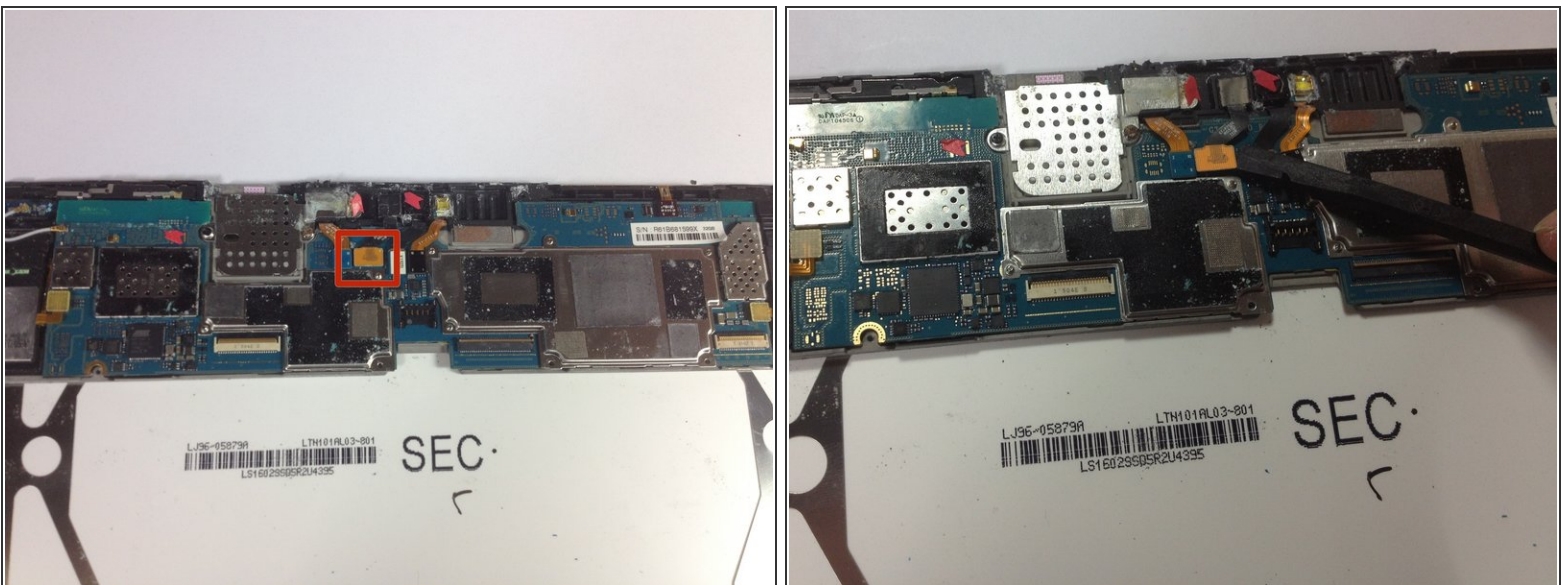
- Remove the ten 3 mm Phillips #00 screws surrounding the battery.

Step 6



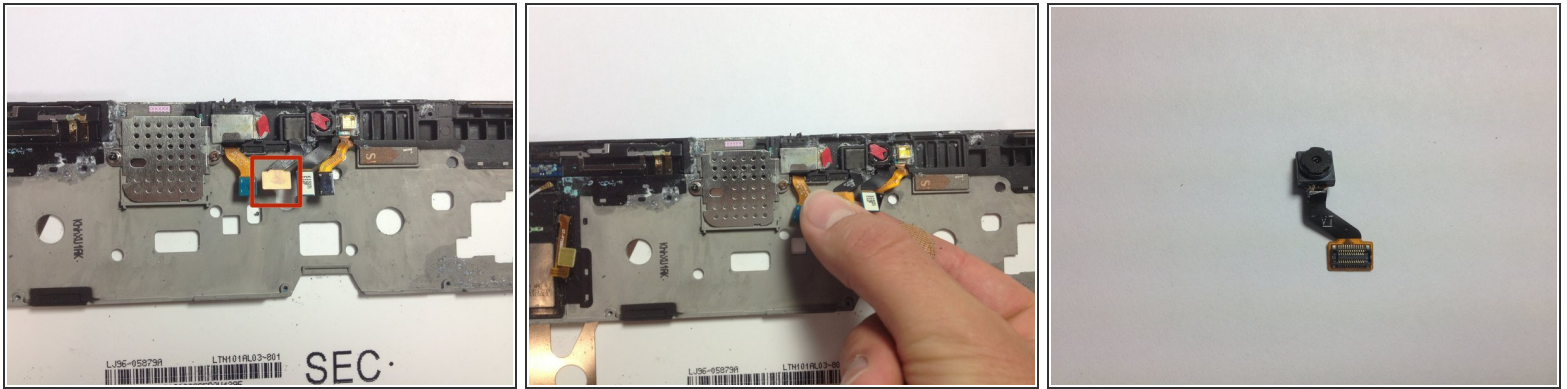
- Lift the edge of the battery up with your finger or a spudger.
- Detach the battery by holding the motherboard down while gently lifting the battery up.

Step 7 — Front Facing Camera



- Use the spudger to pry up on orange connection. This is the connection to the front facing camera.

Step 8



- Grab the orange connection with your fingers and lift it up from its slot.

i We have removed the motherboard in these pictures to make it easier to see, but it is not necessary to complete this step.

To reassemble your device, follow these instructions in reverse order.