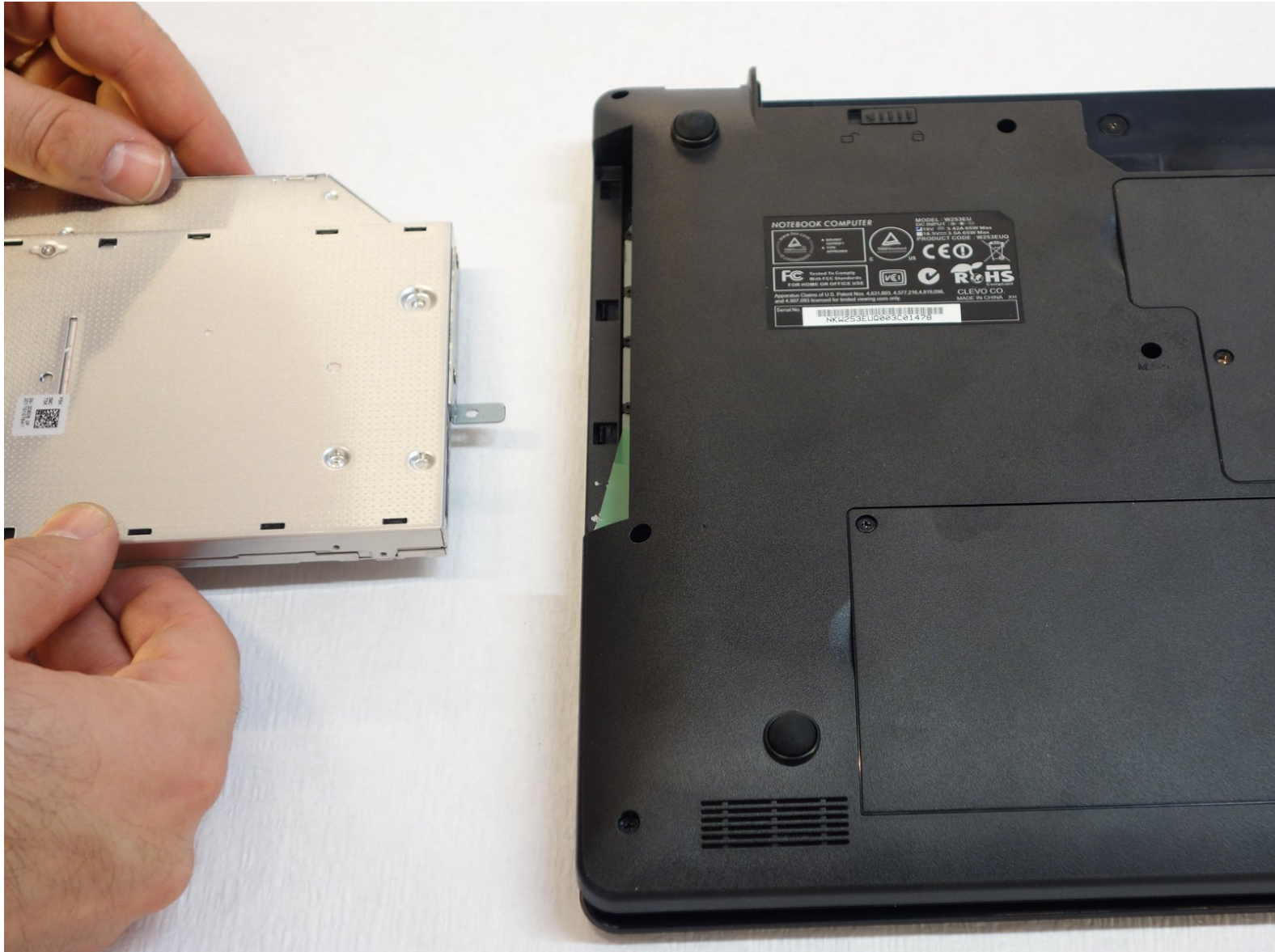




CD / DVD RW drive by why! Replace W253EU

Written By: Felice Suglia

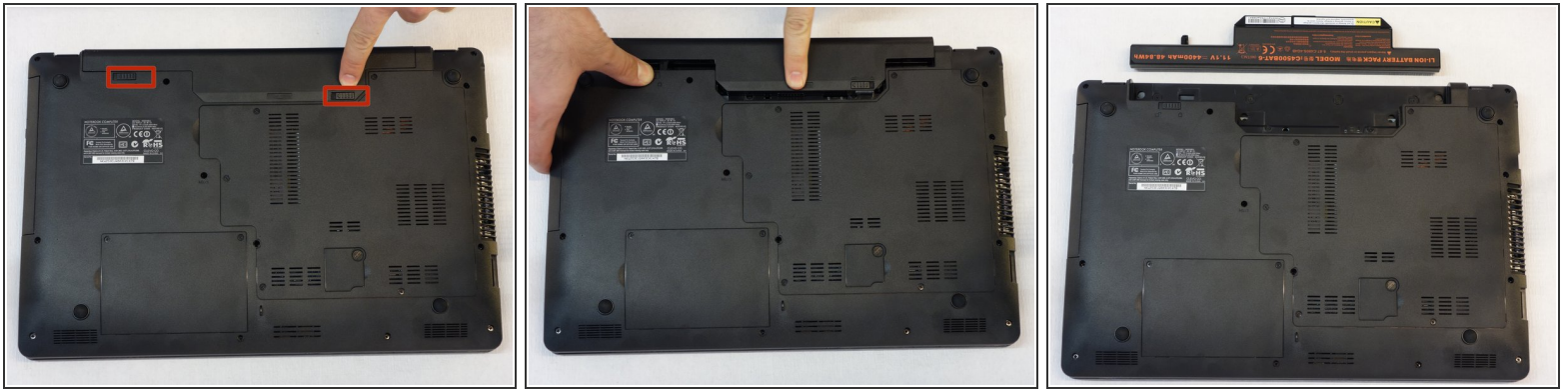




TOOLS:

- [Phillips #1 Screwdriver](#) (1)
-

Step 1 — Battery from why! Remove W253EU



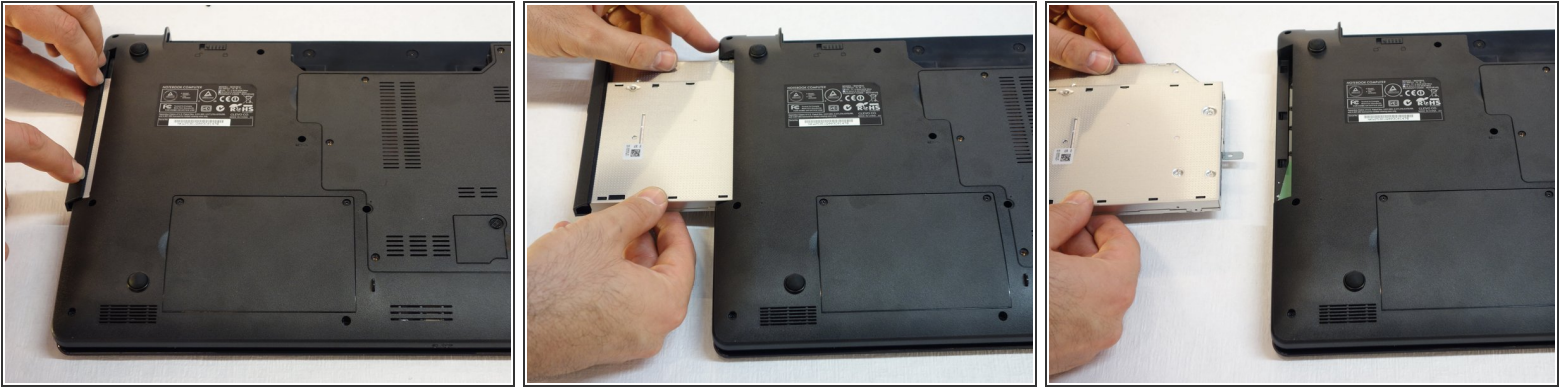
- Turn off the computer.
- ⓘ Before each operation it is important to start with the removal of the accumulator.
- Take the slide unlocked into position, remove the battery.

Step 2 — CD / DVD RW drive



- Use a Phillips # 1 screwdriver to screw that holds the CD / DVD drive in place.

Step 3



- Pull the CD / DVD drive carefully out

For reassembly, follow the instructions in reverse order.