



India Mark II Tank Replacement

Replace the tank on an India Mark II pump.

Written By: Andrew Optimus Goldheart



INTRODUCTION

Follow this guide to remove the tank and spout for repair or replacement.



TOOLS:

- [24mm Wrench](#) (1)
-

Step 1 — Access Door



- ☑ Before performing any repairs, perform a water test on the pump by raising and lowering the handle a full 40 strokes. A properly performing pump will yield greater than 10 liters.
- Remove the hex head bolt from the top of the access door on the pump head.
- ☑ On reassembly, this bolt should be hand-tight.

Step 2



- Pull the access door straight up off the pump head.
- ⓘ Store the access door in a sanitary place to prevent contamination.

Step 3



- ✦ The access door has a tongue that fits into the base of the pump head.
- i The access door makes a convenient tray to hold nuts and bolts during the disassembly.


Step 4 — Chain



- Place the spacer collar around the pump rod below the raised chain, with the beveled side down, and the flat side facing up.

Step 5



 The following procedure requires two people. If you attempt to do this alone, you risk injuring yourself and damaging the pump.

- Lift the pump handle until the base of the chain comes to rest on the spacer collar, and the chain is slack. Hold the handle in this position while the chain is being detached.

Step 6



- Using the two access holes, place an angled socket wrench on the bolt and nut attaching the chain to the pump handle.

Step 7



- Hold the wrench on the bolt stationary.
- Loosen the nut.

Step 8



- Remove the nut from the chain bolt.

Step 9



- Remove the washer from the chain bolt.

Step 10



- Remove the chain bolt.

Step 11



- Pull the top of the chain straight off of the pump handle.

Step 12 — Head



- Remove the two bolts from the handle side of the pump head.
- Use one wrench on the bolt and another on the nut beneath. Hold the bolt stationary and loosen the nut.

Step 13



- Remove the two bolts and nuts from the handle side.

Step 14



- After removing the two handle side bolts, have your partner support the weight of the handle.
- Remove the two remaining bolts in the same fashion.

Step 15



- Lift and remove the pump head from the pump.
- ⓘ Store the pump head in a sanitary place, preferably above ground, to prevent contamination.

Step 16 — Chain



- Slightly twist the head flange, until the corners overhang the top of the tank far enough to grab.

Step 17



- Lift the head flange up about one foot above the tank.

Step 18



- Slide the rod clamp around the pump rod, and support it on the tank base.
- ⓘ Make sure the pegs in the base of the rod clamp fit into the appropriate holes in the top of the tank.

Step 19



- Tighten the rod clamp against the pump rod.

⚠ Be sure the pump rod is centered within the jaws of the clamp and held securely.

Step 20



- Lower the head flange.

Step 21



- Unscrew the chain from the top of the pump rod.
- Remove the chain.
- Check the chain for signs of wear or damage.
- ❗ Set the chain in a sanitary place, such as the access door that was previously removed.

Step 22 — Head Flange



- Remove the chain support from around the pump rod.

Step 23



- Remove the jam nut from the top of the pump rod.

Step 24



- Remove the head flange.

Step 25



- Screw the jam nut back onto the top of the pump rod.

Step 26 — Tank



- Screw a T-handle onto the top of the pump rod. Tighten the T-handle up against the jam nut.

Step 27



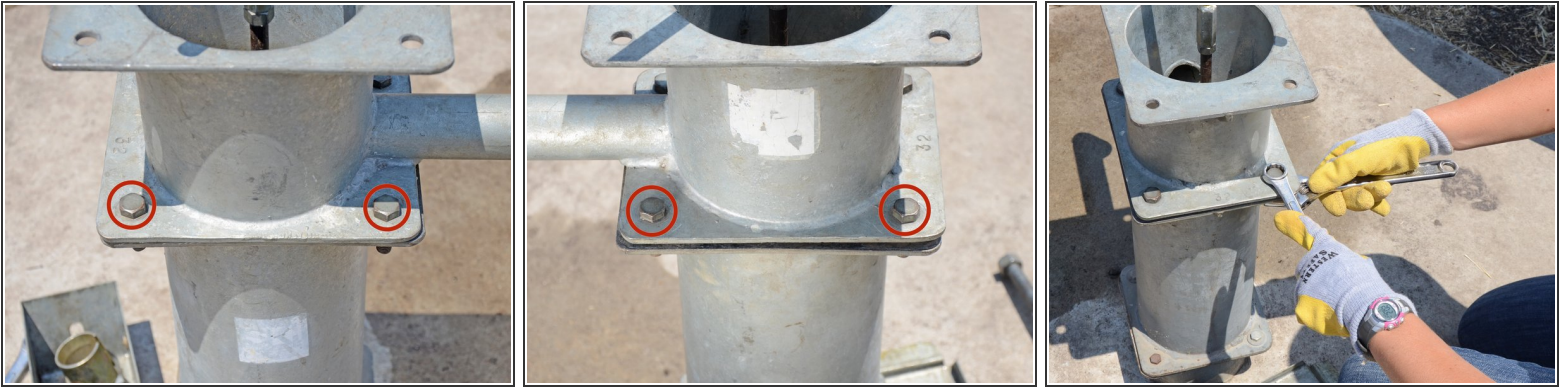
- Loosen the rod vise.

Step 28



- Remove the rod vise from the tank.

Step 29



- Remove the four bolts connecting the tank to the top flange.
- Use one wrench on the bolt and a second wrench on the nut beneath. Hold the bolt still and loosen the nut.

Step 30




- Twist the tank 45 degrees in order to get a better grasp on it.

Step 31



- Lift the tank straight up, about one foot.

 The tank is attached to the riser main, and the two must be lifted as a unit. Be careful and get help, as this can be very heavy.

Step 32



- Have a third person place the pipe vise around the riser main, on top of the top flange.
- Tighten the pipe vise securely around the riser main.

Step 33



- Secure the pipe vise to the top flange with two bolts and nuts to hold the pipe vise in place.

Step 34



- Unscrew the tank from the riser main.

Step 35



- Lift the tank up a few inches above the top of the riser main.

Step 36



- Insert the rod vise between the riser main and the tank, around the pump rod.
- Tighten the rod vise onto the pump rod.

Step 37



- Unscrew the T-handle from the pump rod and remove it.
- ⓘ Keep the T-handle ready to reattach to the pump rod after the tank is removed.

Step 38



- Remove the tank.

To reassemble your device, follow these instructions in reverse order.