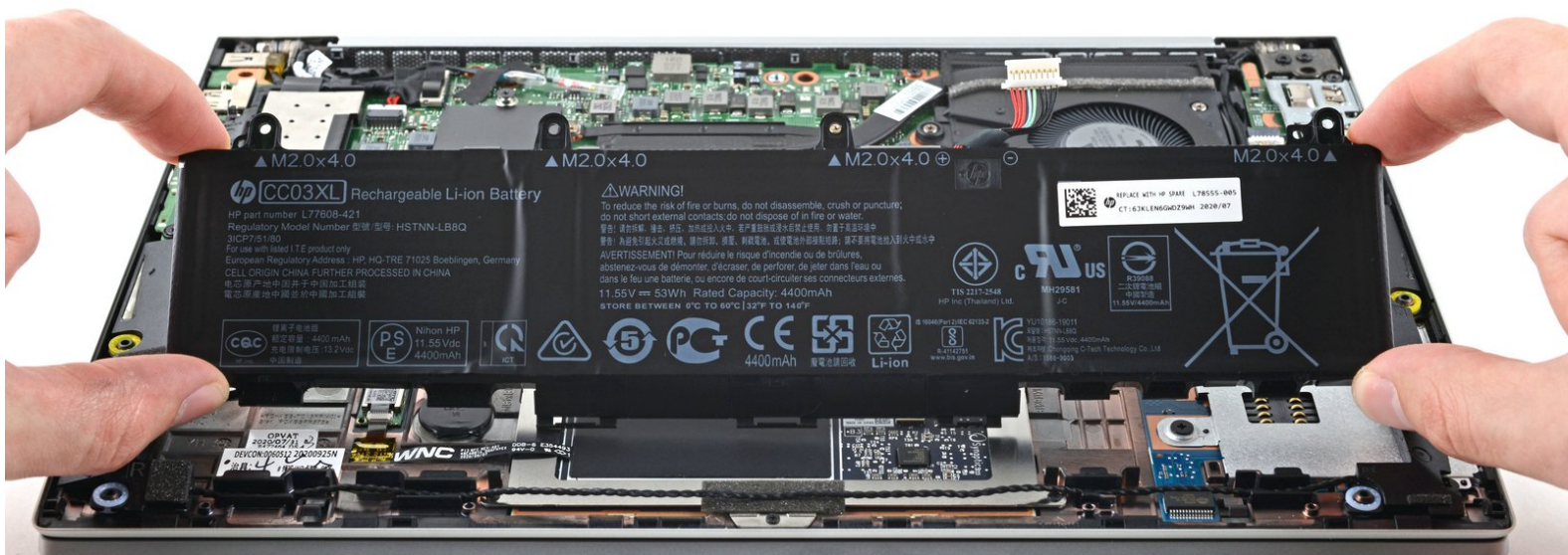




# HP EliteBook 835 G7 Battery Replacement

Use this guide to replace the battery in your...

Written By: Alex Diaz-Kokaisl



---

## INTRODUCTION

Use this guide to replace the battery in your HP EliteBook 835 G7 Laptop.

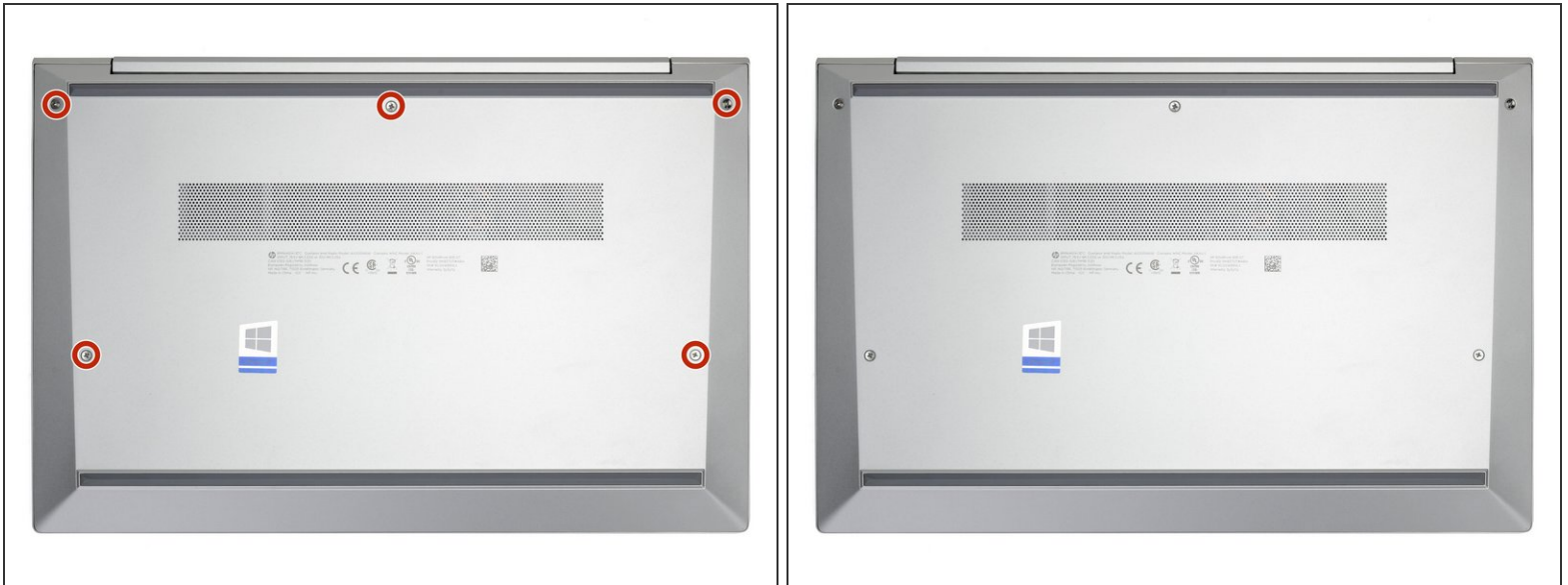
**For your safety, discharge the battery below 25% before disassembling your device.** This reduces the risk of fire if the battery is accidentally damaged during the repair. If your battery is swollen, [take appropriate precautions](#).



### TOOLS:

- [Phillips #0 Screwdriver](#) (1)
  - [1 x Opening Picks](#) (1)
  - [Spudger](#) (1)
-

## Step 1 — Remove the Phillips screws



**!** Completely power off and unplug your EliteBook before you start. Close the display and flip the entire laptop upside-down.

- Use a Phillips screwdriver to loosen the five captive screws from the lower case.

## Step 2 — Release the case's right clips



- Insert an opening pick between the lower case and the chassis along the hinge edge.
- Slide the opening pick around the right corner and halfway up the side of the EliteBook to release the clips securing the lower case.

### Step 3 — Release the case's left clips



- Repeat the previous step on the left side of the case to release the clips.

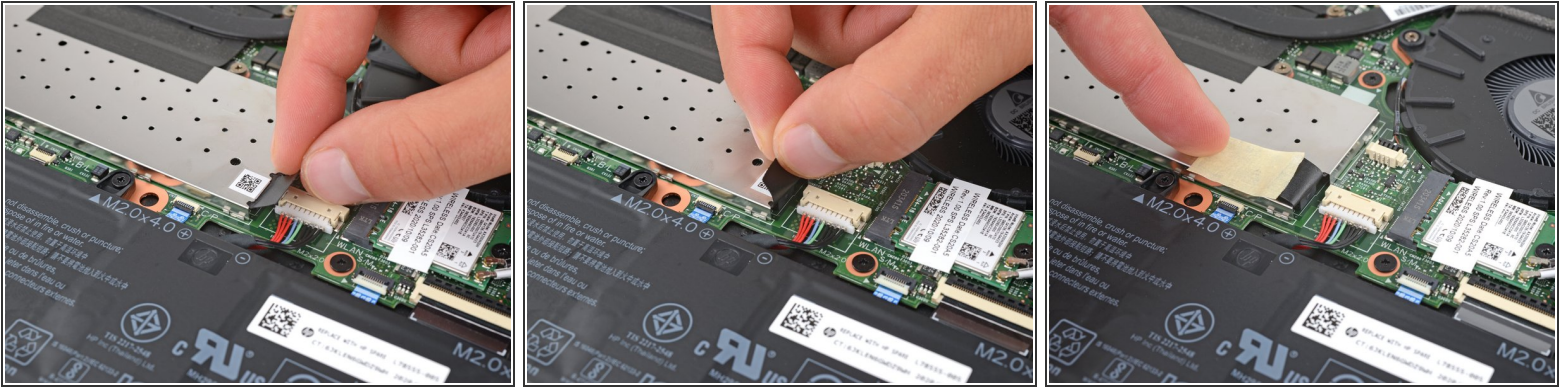
### Step 4 — Remove the lower case



- Lift the lower case up and away from the EliteBook and remove it.



## Step 5 — Move the pull tab



- Move the pull tab that covers the battery connector out of the way.
- ① You can use a piece of tape to hold the pull tab out of the way.

## Step 6 — Disconnect the battery



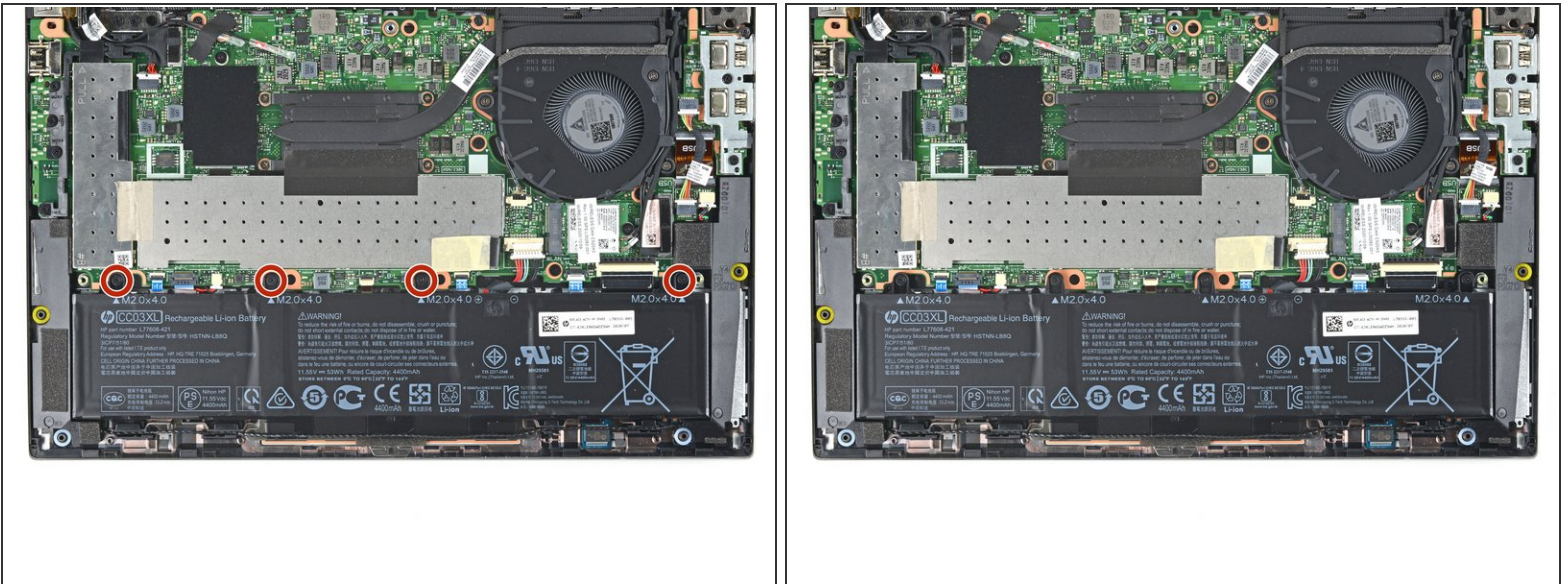
- Use the pointed end of a spudger to push each side of the battery connector until it comes out of the socket.

## Step 7 — Reroute the speaker cable



- Use a spudger, or your fingers, to separate the speaker cable from its plastic recess.
- Repeat for the two other plastic recesses.

## Step 8 — Unfasten the battery



- Use a Phillips screwdriver to remove the four 4.5 mm-long screws securing the battery.



## Step 9 — Remove the battery



- Tilt the top of the battery upward to release its plastic clips.
- Remove the battery.

To reassemble your device, follow these instructions in reverse order.

For optimal performance, [calibrate your newly installed battery](#) after completing this guide.

Take your e-waste to an [R2 or e-Stewards certified recycler](#).

Repair didn't go as planned? Try some [basic troubleshooting](#), or ask our [Answers community](#) for help.