



# Google Pixel 3 XL Back Cover Adhesive Installation

This repair guide was authored by the iFixit...

Written By: Chayton Ritter



# INTRODUCTION

**This repair guide was authored by the iFixit staff and hasn't been endorsed by Google.** Learn more about our repair guides [here](#).

Follow this guide to correctly apply replacement back cover adhesive to your Pixel 3 XL after a repair.

Before you begin, you should have already removed your Pixel's back cover and set it aside. Detailed instructions for this can be found [here](#).



## TOOLS:

- [Tweezers](#) (1)
- [Spudger](#) (1)
- [Cotton Swabs](#) (1)
- [Isopropyl Alcohol \(90% or Greater\)](#) (1)



## PARTS:

- [Google Pixel 3 XL Back Cover Adhesive - Genuine](#) (1)

## Step 1 — Remove adhesive residue from the frame



- Pick and scrape away the old adhesive from the frame.
- Use a spudger to scrape away any lingering adhesive.
- ⚠ Don't use metal tools to scrape away adhesive as this will damage the frame.
- For best results, clean the area underneath the removed adhesive with 90% or greater isopropyl alcohol to prep the surface for the new adhesive.

## Step 2 — Remove adhesive residue from the back cover



- Repeat the previous step for the back cover adhesive.
- ⚠ Don't use metal tools to scrape away adhesive as this will damage the back cover coating.
- ⚠ Don't use isopropyl alcohol near the rear camera bracket as it will damage its adhesive and foam.

### Step 3 — Prepare the replacement adhesive



- Peel away the plastic lining to expose the frame side of the replacement adhesive.

### Step 4 — Apply the adhesive



**⚠ Be very careful during this step! The adhesive is very sticky and can't be repositioned once it sticks. Misaligned adhesive can lead to an improper seal.**

- Lower the adhesive onto the frame.
- Use the holes in the frame to properly align the adhesive.

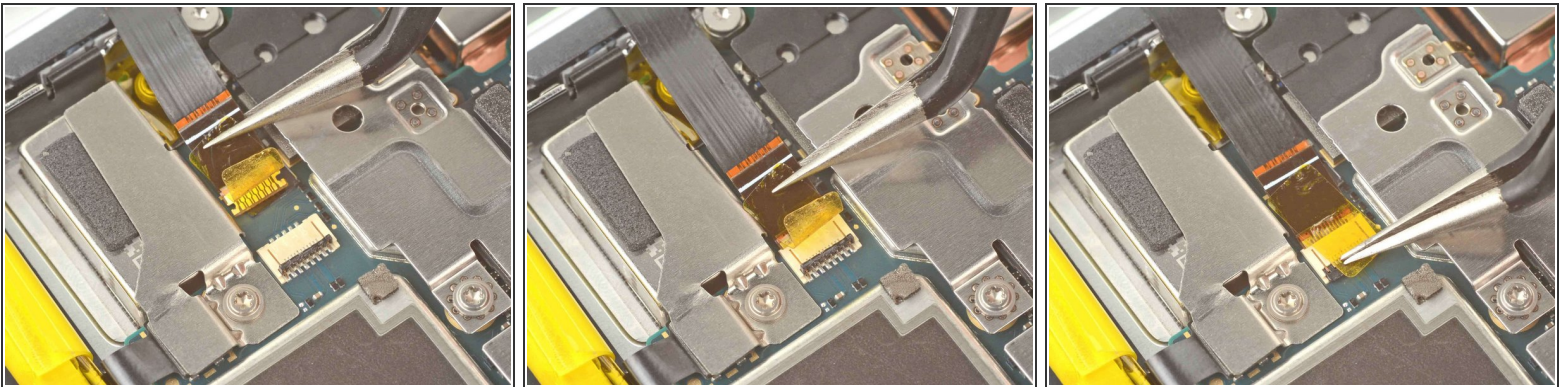


## Step 5 — Secure the adhesive to the frame



- Use the flat end of a spudger or your fingernail to press down on the adhesive.
- Slide along the perimeter to secure the adhesive to the frame.

## Step 6 — Connect the fingerprint sensor



- Use tweezers to guide the fingerprint sensor cable into its socket.
- Press down on the latch to secure it.

## Step 7 — Peel away the remaining plastic lining



- Peel away the plastic lining to expose the back cover side of the adhesive.

## Step 8 — Secure the back cover to the frame



- Lower the back cover onto the frame.
- Press down on all edges of the back cover to secure it to the frame.
- ☑ To help the adhesive bond more securely, heat the perimeter of the back cover and then place the phone face-down under a heavy stack of books for 30 minutes.

Repair didn't go as planned? Try some [basic troubleshooting](#), or ask our [Pixel 3 XL Answers community](#) for help.