



# MacBook Pro 13" Retina Display Early 2013

## AirPort Board Replacement

Replace the AirPort Board in your MacBook Pro 13" Retina Display Early 2013.

Written By: Sam Goldheart



# INTRODUCTION

Use this guide to replace the AirPort board.



## TOOLS:

- [MacBook Pro and Air 5-Point Pentalobe Screwdriver](#) (1)
- [iFixit Opening Tools](#) (1)
- [Spudger](#) (1)
- [T5 Torx Screwdriver](#) (1)
- [T6 Torx Screwdriver](#) (1)
- [Tweezers](#) (1)



## PARTS:

- [MacBook Pro 13" and 15" \(Late 2012/Early 2013\) Retina Airport/Bluetooth Board](#) (1)

## Step 1 — Lower Case



- Remove the following ten screws securing the lower case to the upper case:
  - Two 2.3 mm P5 Pentalobe screws
  - Eight 3.0 mm P5 Pentalobe screws
- ☑ Throughout this repair, [keep track of each screw](#) and make sure it goes back exactly where it came from to avoid damaging your device.

## Step 2



- Wedge your fingers between the upper case and the lower case.
- Gently pull the lower case away from the upper case.
- Remove the lower case and set it aside.

## Step 3



- ✦ During reassembly, gently push down the center of the lower case to reattach the two plastic clips.
  - The lower case is connected to the upper case at the center, with two plastic clips.

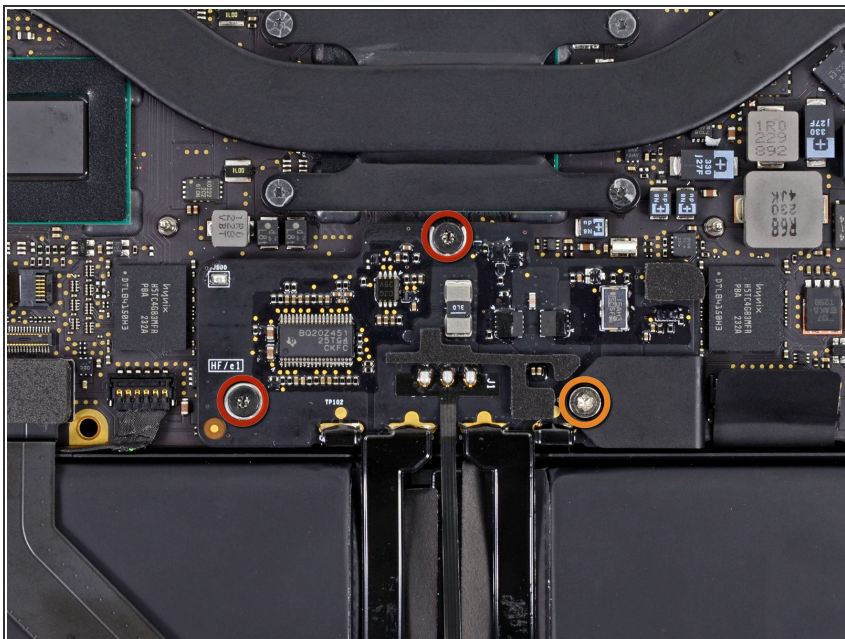
## Step 4 — Battery Connector



- Remove the plastic cover adhered to the battery contact board.

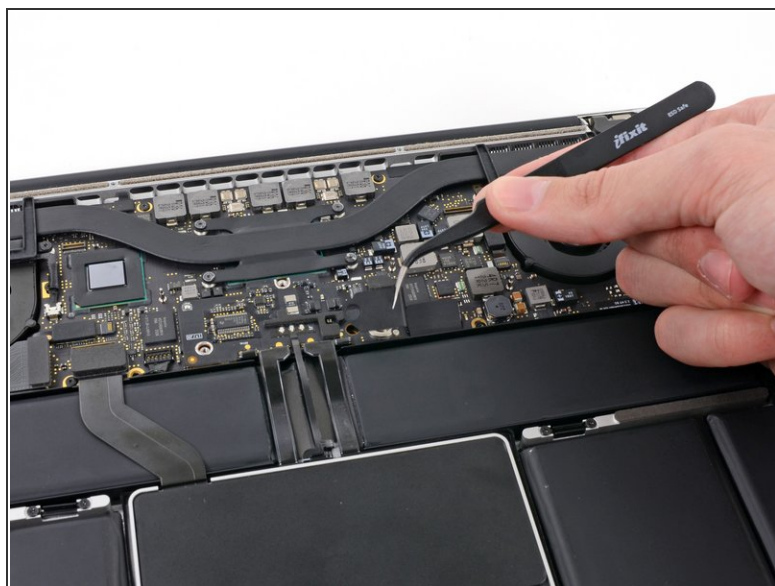


## Step 5



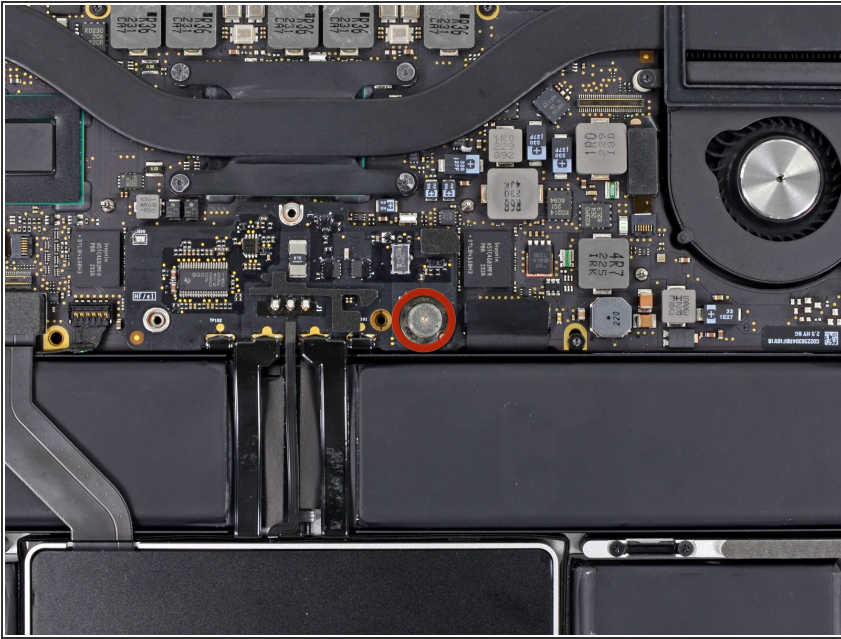
- Remove the following screws securing the battery connector board to the logic board:
  - Two 2.8 mm T6 Torx screws
  - One 7.0 mm T6 Torx shouldered screw

## Step 6



- Use tweezers to remove the small plastic cover located near the bottom right of the battery connector board.

## Step 7




- Remove the wide head 6.4 mm T6 Torx screw securing the battery connector to the logic board assembly.

## Step 8



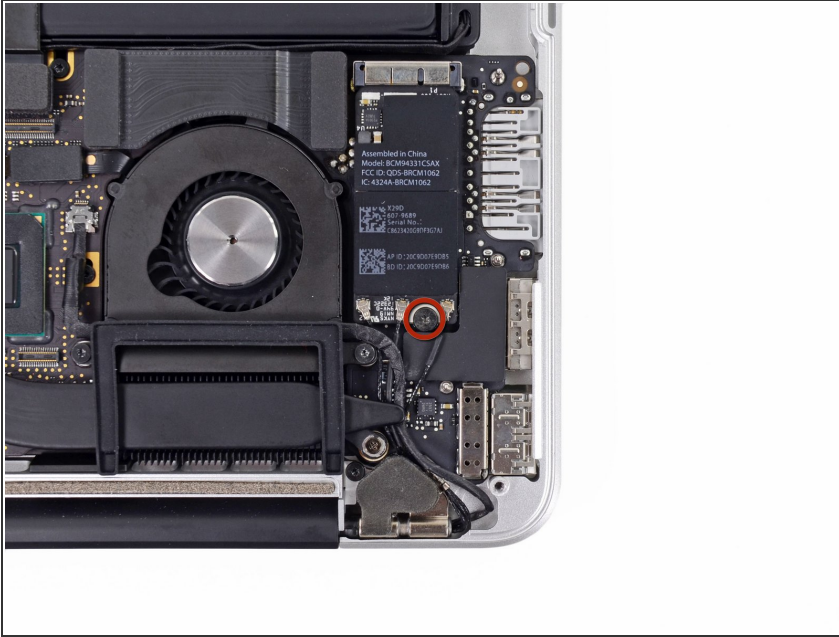
- Carefully lift the battery connector board up off the logic board.
- It is recommended to bend the battery cables just slightly, to keep the board suspended up above the logic board and out of the way.

 Do not fold the board completely over, or crease the cables, as this may damage the battery.

This document was generated on 2021-05-20 05:20:34 AM (MST).



## Step 9 — AirPort Board Assembly



- Remove the single 2.7 mm T5 Torx screw securing the AirPort board to the I/O board.

## Step 10



- Use the flat end of a spudger to pry and disconnect the three antenna cable connectors from the AirPort board.
- ☛ The three cables are coded with black sleeves of different lengths. During reassembly:
  - Connect the long-sleeved cable to the center socket.
  - The short-sleeved cable connects next to the screw.
  - The remaining cable has no sleeve, and connects in the last empty socket, next to the fan.

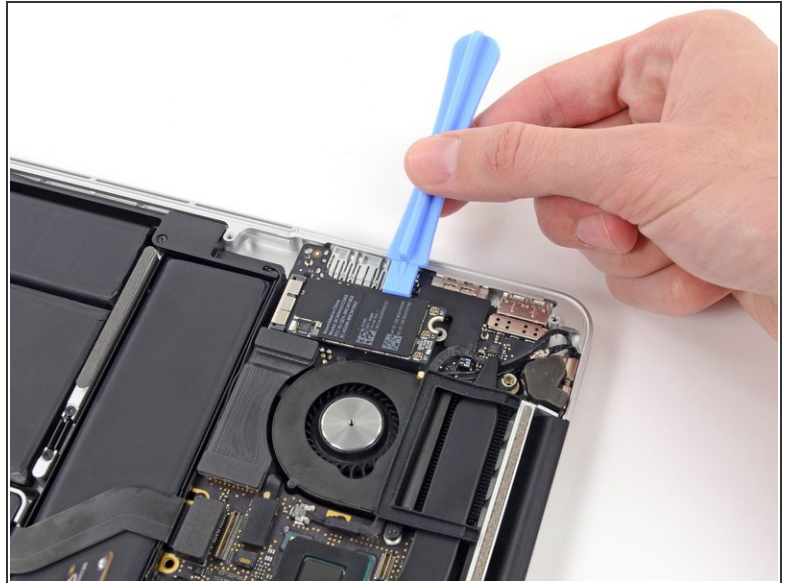
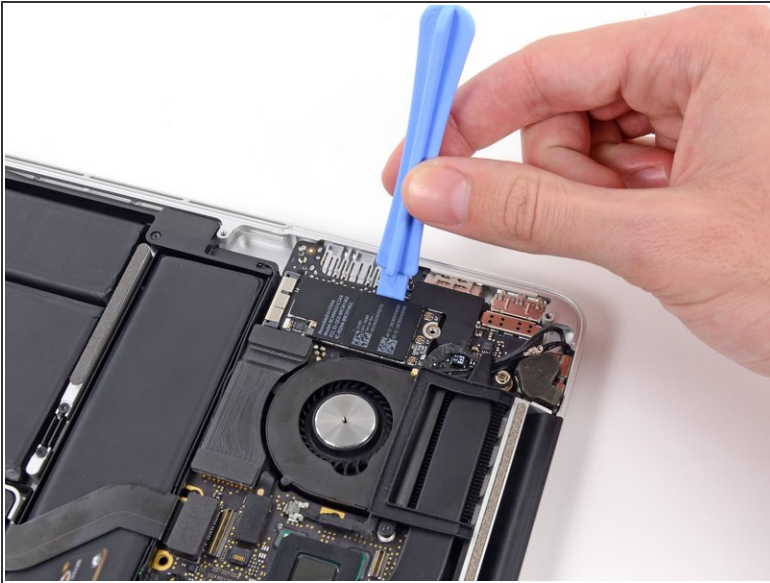
## Step 11



- Move the antenna cables aside, clear of the AirPort board.



## Step 12



- Wedge a plastic opening tool between the AirPort board (side nearest the I/O ports) and the I/O board.
  - Gently pry the AirPort board upwards, but do **not** remove it.
- ⚠ Only lift the AirPort board as much as is necessary to get a grip on it. Lifting it too high above the I/O board may damage the board or the socket.

## Step 13



- Pull the AirPort board straight out of its socket on the I/O board.

## Step 14 — AirPort Board



- AirPort board remains.

To reassemble your device, follow these instructions in reverse order.