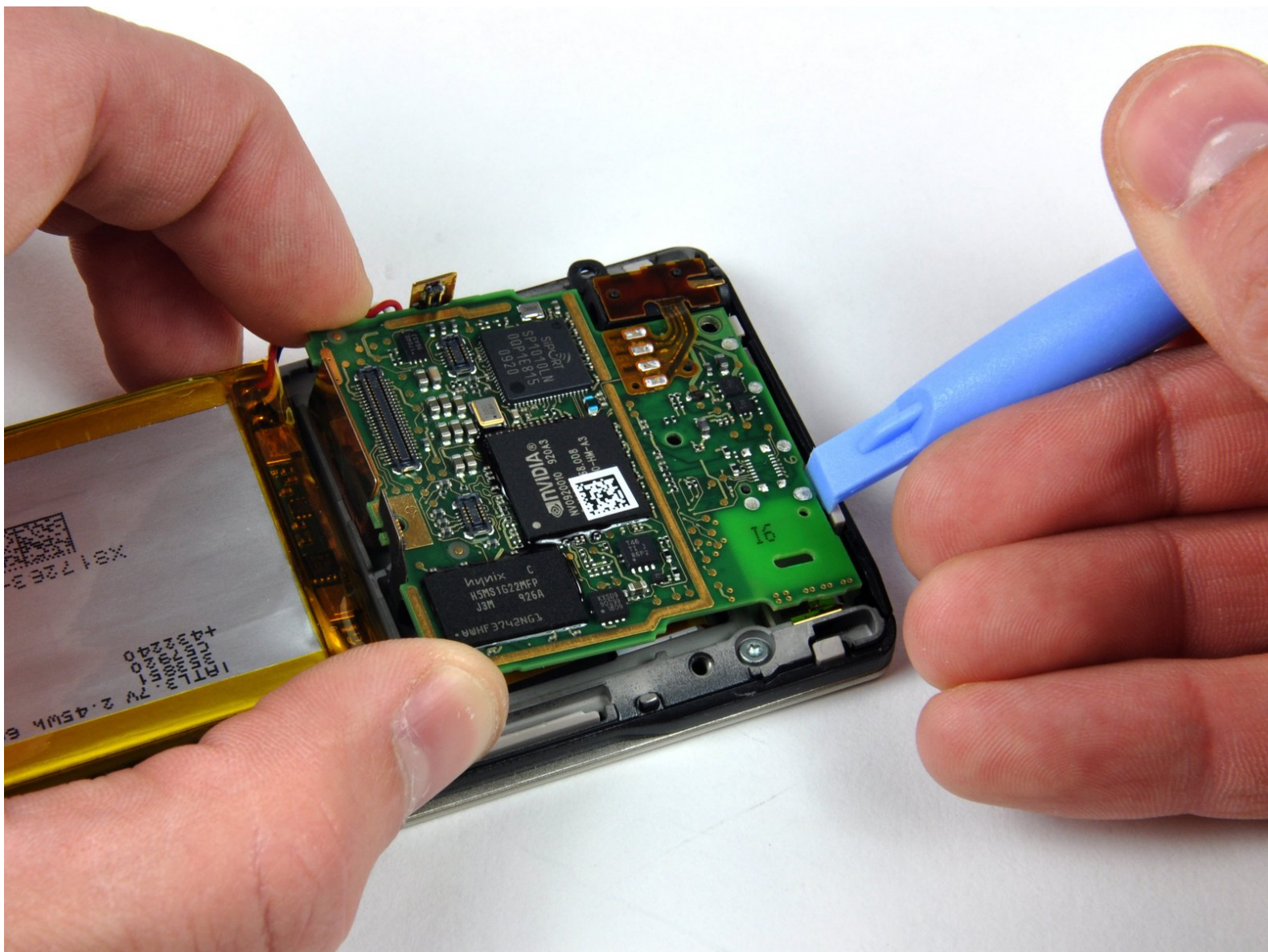




Microsoft Zune HD Battery & Logic Board Replacement

Written By: Walter Galan



INTRODUCTION

Faulty battery or logic board? Replace them!



TOOLS:

- [T6 Torx Screwdriver](#) (1)
 - [Tri-wing Screwdriver](#) (1)
 - [iFixit Opening Tools](#) (1)
 - [1xT4 Torx Screwdriver](#) (1)
-

Step 1 — Upper Rear Panel



- Remove the four Tri-Wing screws securing the upper rear panel to the inner chassis.

Step 2



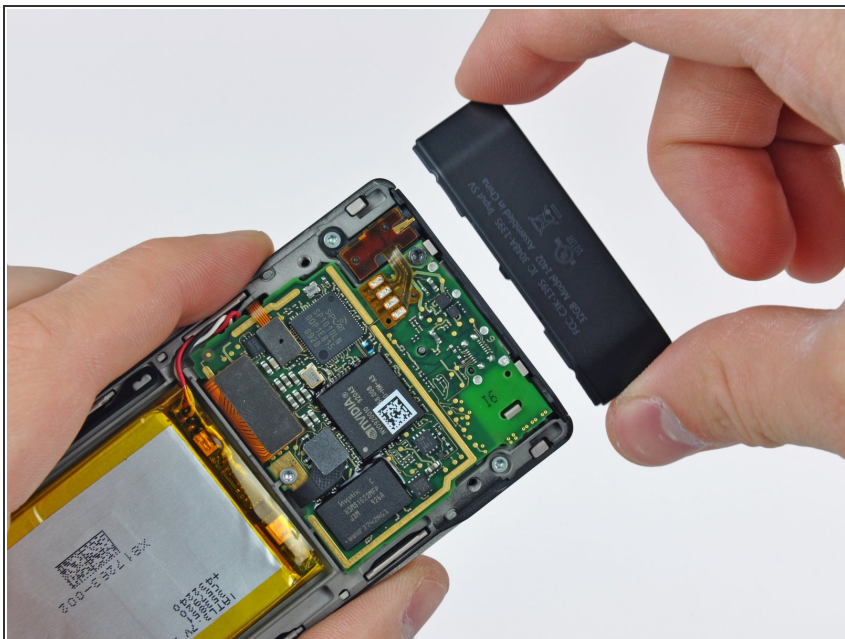
- Slightly rotate the top edge of the upper rear panel away from the Zune.
- Lift the upper rear panel straight up off the black plastic lower rear panel.

Step 3 — Lower Rear Panel



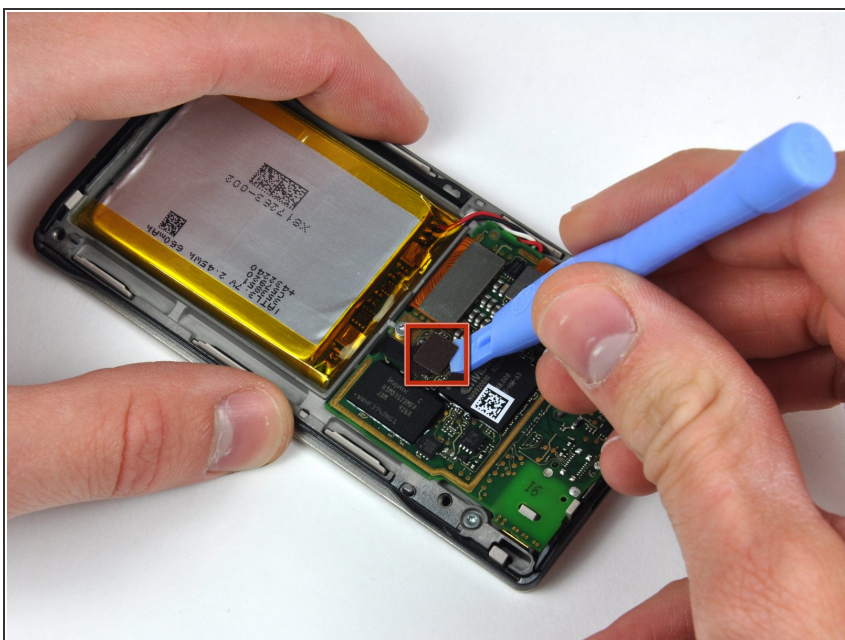
- Insert a small Zune opening tool into the gap between the logic board and one side of the black plastic lower rear panel.
- Carefully twist the Zune opening tool to pop the lower rear panel off the clips attaching it to the Zune.
- ① Repeat this process for the other side of the lower rear panel.

Step 4



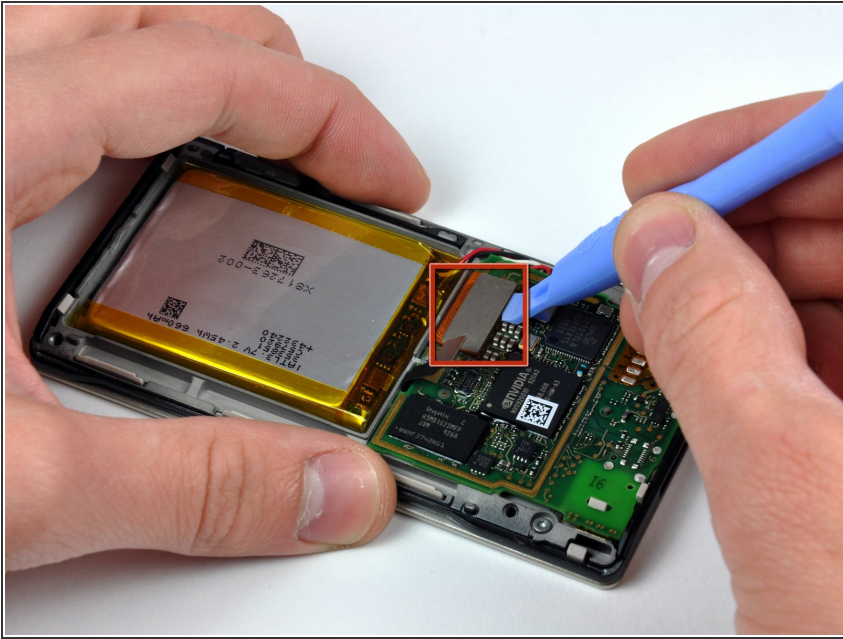
- Carefully slide the lower rear panel away from the Zune.

Step 5 — Battery & Logic Board



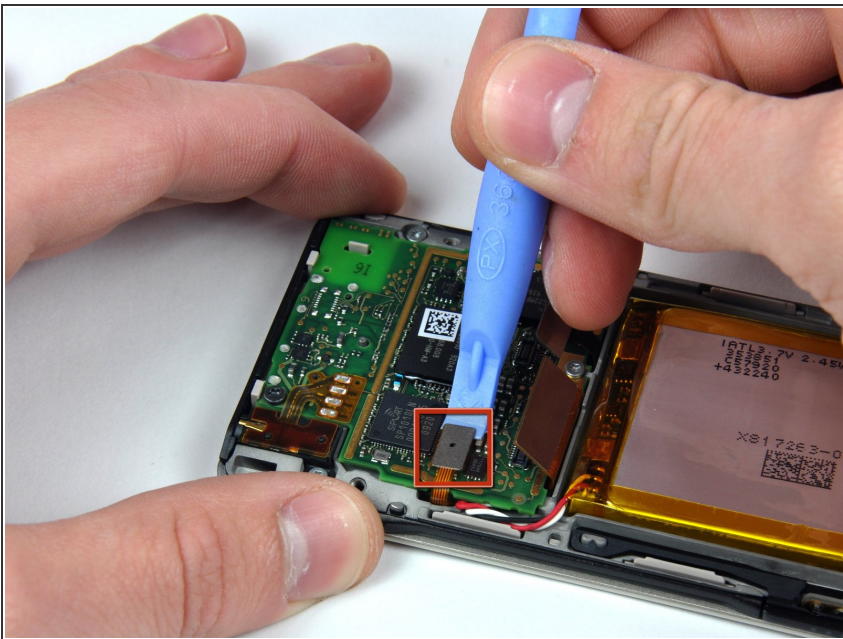
- Use a Zune opening tool to pry the digitizer ribbon cable connector up off the logic board.

Step 6



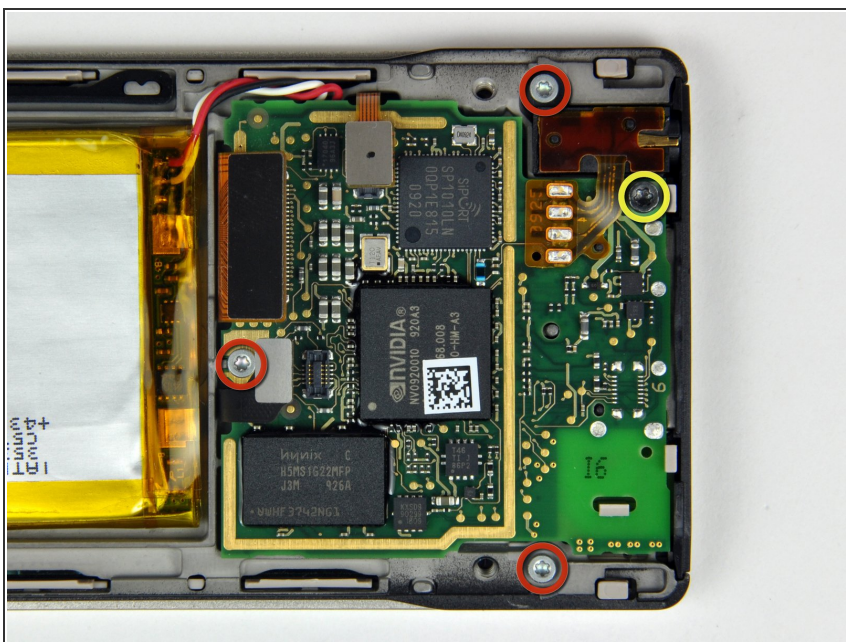
- Use a Zune opening tool to pry the OLED display ribbon cable connector up off the logic board.

Step 7



- Use a Zune opening tool to pry the control ribbon cable up off the logic board.

Step 8



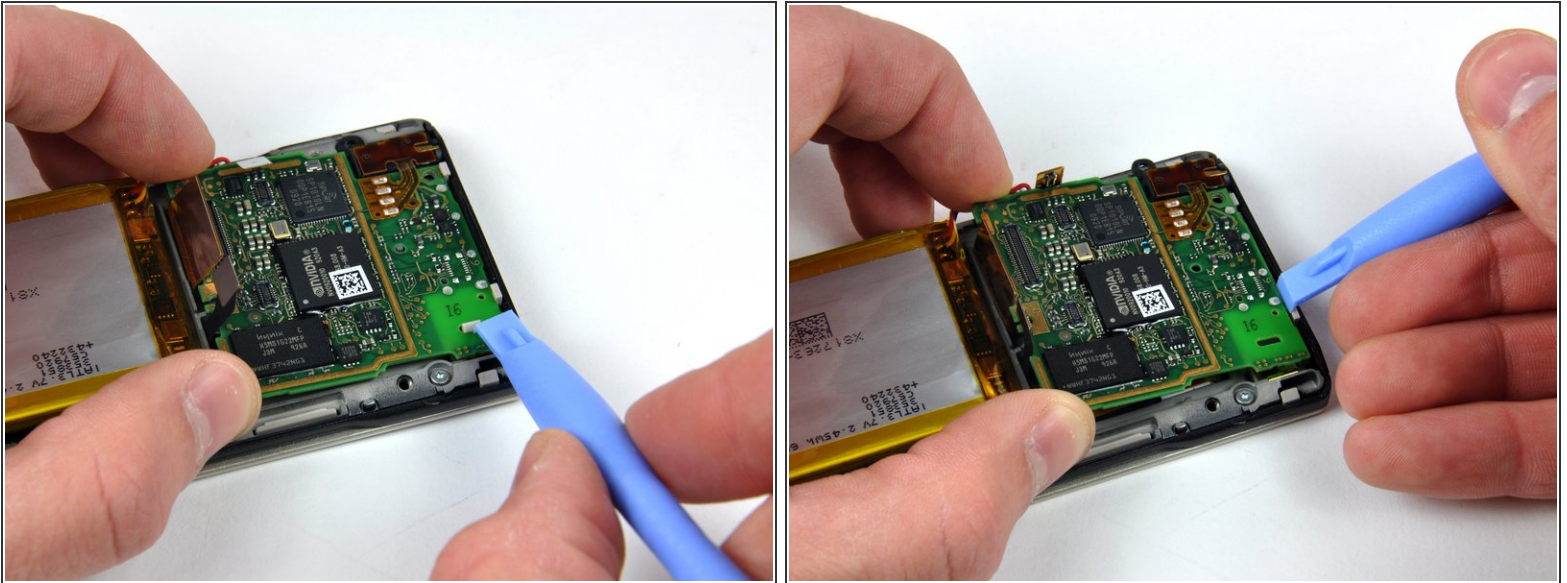
- Remove the following Torx screws securing the logic board assembly to the inner chassis:
 - Three T5 Torx screws.
 - One T6 Torx screw.

Step 9



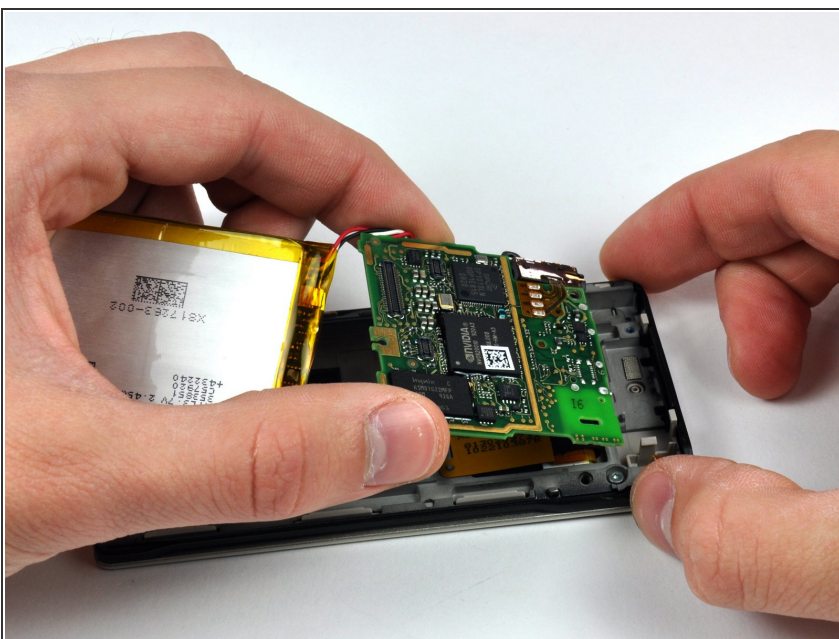
- Use a Zune opening tool to carefully pry the battery off the adhesive securing it to the inner chassis.
- ⚠ Do not attempt to completely remove the battery from the inner chassis as it is still attached to the logic board.

Step 10



- Use a Zune opening tool to push the small plastic clip securing the logic board near its lower left edge toward the headphone jack while gently lifting the upper edge of the logic board.
- Use a Zune opening tool to pull the plastic clip away from the logic board while gently pulling the board away from the bottom edge of the Zune.

Step 11



- ❗ For this step, it is recommended to cautiously hold the battery and logic board assembly with one hand while holding the inner chassis with the other.
- Pull the logic board away from the lower bezel and remove it from the inner chassis, minding any cables that may get caught.

To reassemble your device, follow these instructions in reverse order.