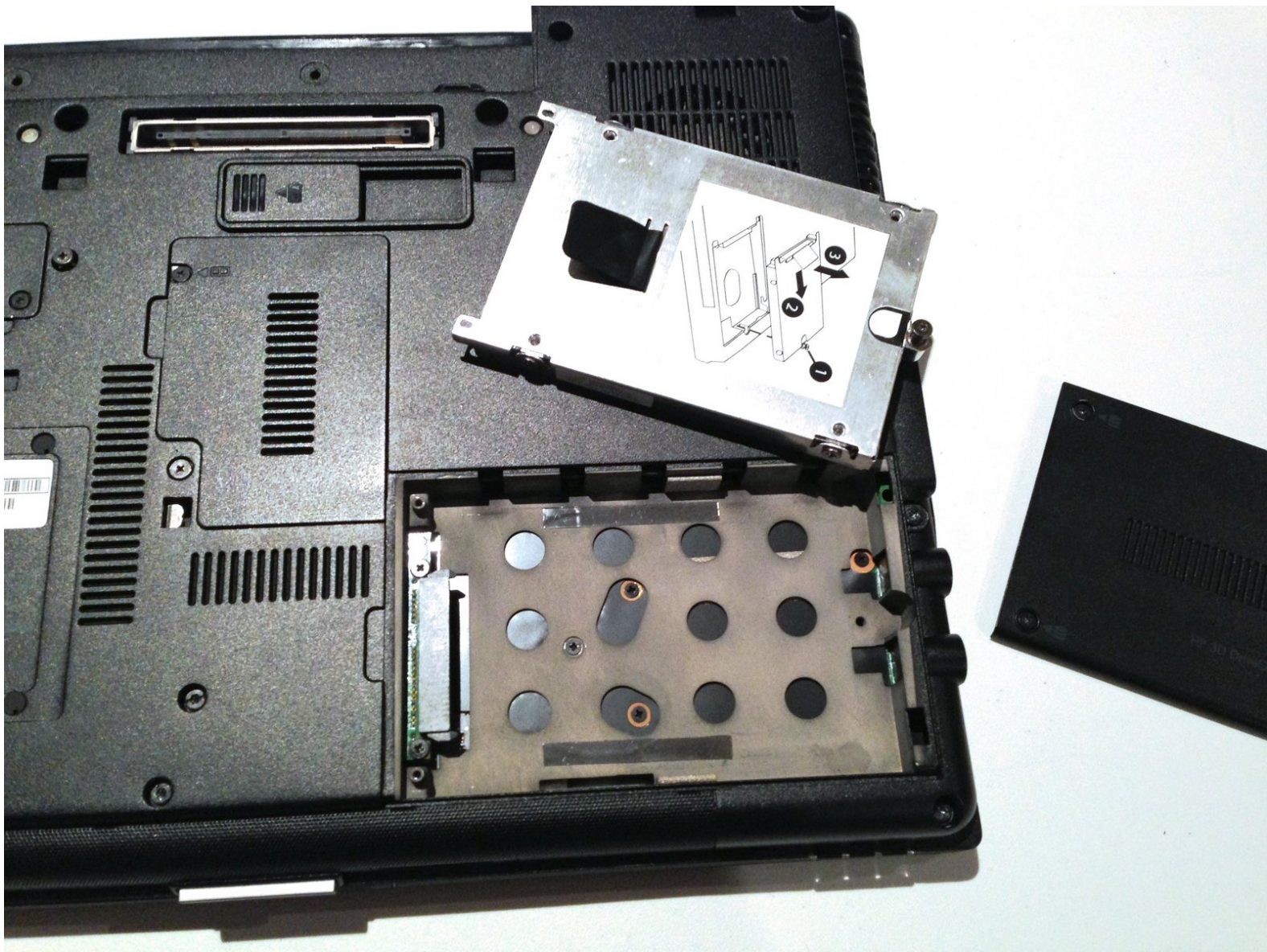




Removing the HP Elitebook 6930p Hard Drive

This guide shows how to remove the laptop HDD

Written By: Richdave



INTRODUCTION

This guide shows how to remove the laptop HDD



TOOLS:

- [Phillips #1 Screwdriver](#) (1)



PARTS:

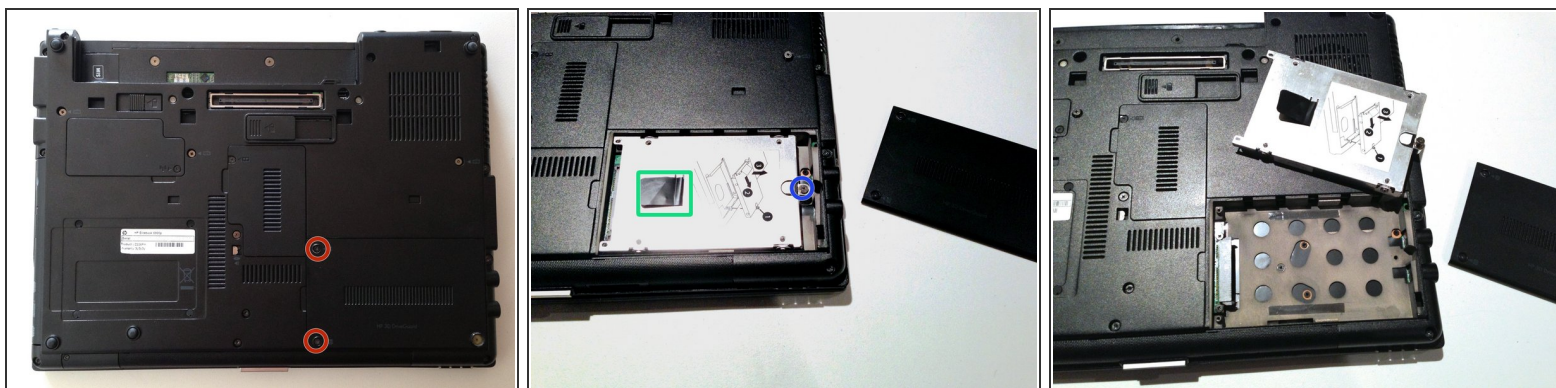
- [1 TB SSD](#) (1)
- [Crucial MX500 250 GB SSD](#) (1)
- [Crucial MX500 500 GB SSD](#) (1)
- [2 TB SSD](#) (1)

Step 1 — Battery Removal



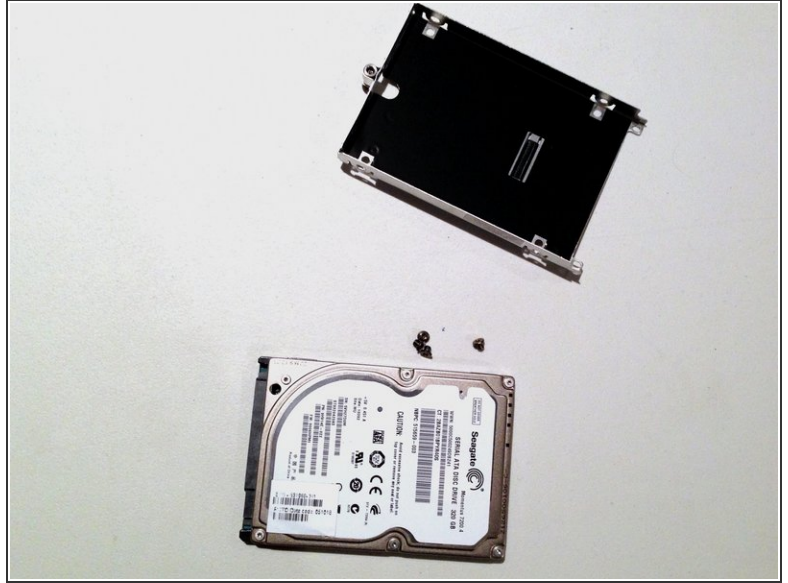
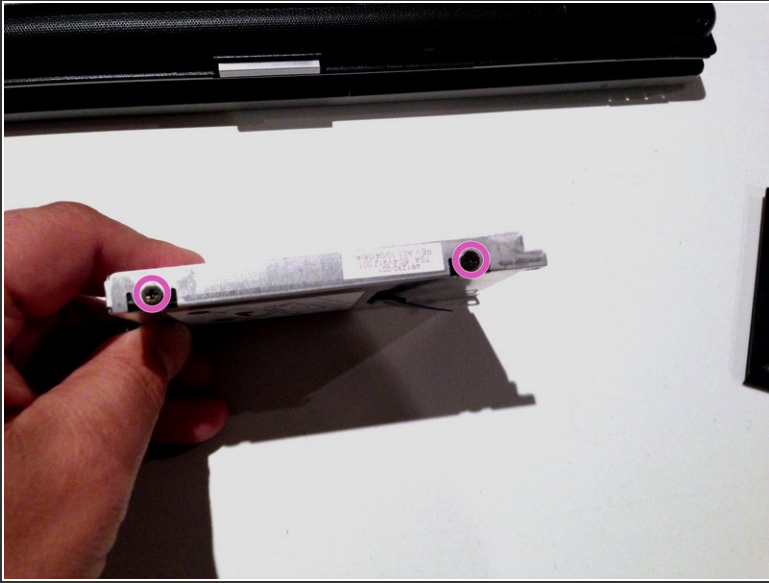
- Flip laptop over and locate the battery release button
- Push release button to the left to release battery and gently pull battery from the laptop

Step 2 — Hard Drive



- With the bottom of the laptop facing up and the front toward you locate and loosen the two M2.0×5.0 **captive** screws holding the hard drive bay cover closed.
- Lift the left side of the bay cover and swing it up and to the right to remove it.
- Loosen the M2.5×10.0 **captive** screw that holds the hard drive in.
- Grasp the plastic tab and slide the hard drive to the right to disconnect it from the motherboard.
- Lift the hard drive straight up and out of the laptop.

Step 3



- To remove the hard drive from the bracket remove the two M3.0×4.0 screws from each side of the hard drive.

To reassemble your device, follow these instructions in reverse order.