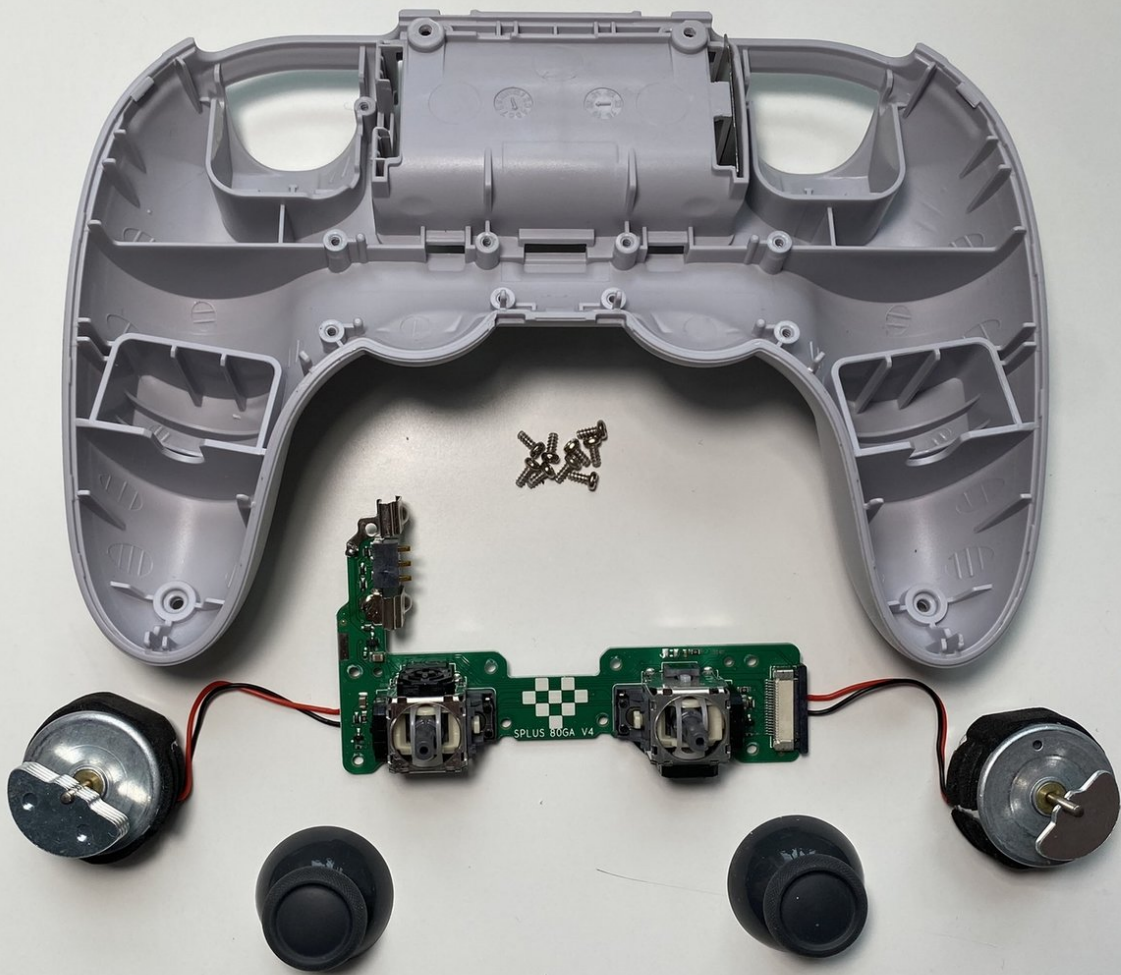




# Separating Rear Board

Prerequisite-Only

Written By: Brian W



---

## INTRODUCTION

This **Prerequisite-Only** guide shows how to remove the bottom board from the 8BitDo SN30 Pro+

---



### TOOLS:

- [T6 Torx Screwdriver](#) (1)
  - [Tweezers](#) (1)
  - [Phillips #1 Screwdriver](#) (1)
-

## Step 1 — Remove Battery



- Place the controller face down.
- Remove the battery cover.
- Remove rechargeable battery or AA batteries.

## Step 2 — Remove Trigger Buttons



- Remove L2 and R2 trigger buttons by pushing them away from the grips.

### Step 3 — Remove Screws



- Use Tweezers to uncover two screws under the label in the battery compartment.
- Use a T6 screwdriver to remove the four 7.3 mm screws securing the rear cover.

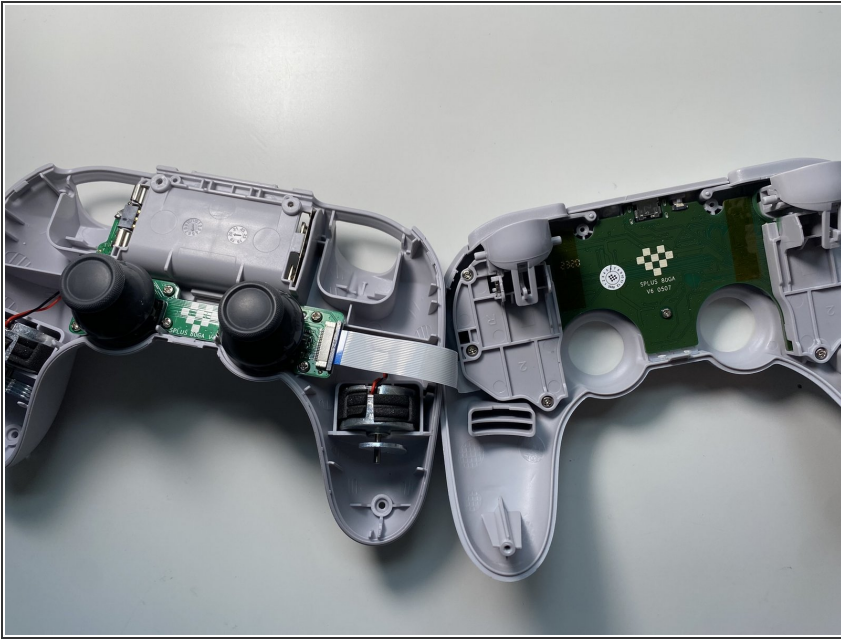
### Step 4 — Unclip Covers



- At the end of each grip, pry apart the covers.
- Use fingernail or opening pick to undo the two top clips.
  - One clip next to L button.
  - One clip next to R button
- Undo the final clip between the joysticks.



## Step 5 — Separate Covers



- Carefully move the rear cover away and from the front cover. Place it to the left.

**⚠ Do not completely separate. The two halves are still attached via a white ribbon cable.**

## Step 6 — Remove Ribbon Cable



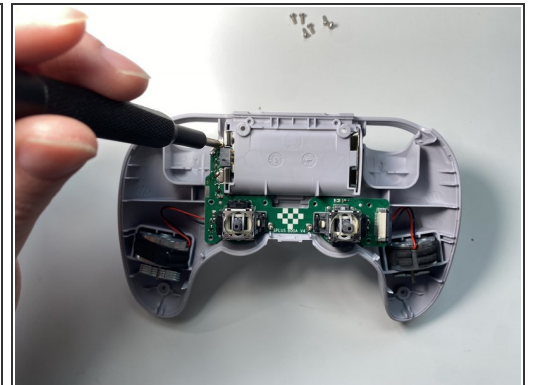
- Unlock the ribbon cable by push open the black plastic tab.
  - ⓘ The tab will slide about 1.5mm
- Pull the ribbon cable out of the connector in the direction of the cable.

## Step 7 — Remove Caps



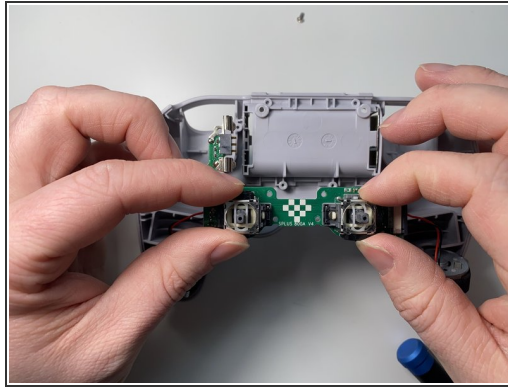
- Grab the top and pull straight up on the joystick cap. Pulling out the caps one-by-one.

## Step 8 — Remove Screws



- Use a Phillips screwdriver to remove the nine 5.2 mm screws securing the rear circuit board.
  - Four around the Right stick
  - Four around the Left stick
  - One next to the Battery connector

## Step 9 — Separate Rear Board



- Pull the two rumble motors out of their housings.
- Grab the analog sticks to pull out the circuit board

To reassemble your device, follow these instructions in reverse order.