



# 8BitDo SN30 Pro+ Controller Joystick Caps Replacement

Remove or Replace broken, worn out Joystick Caps from the 8BitDo SN30 Pro+ .

Written By: Brian W



# INTRODUCTION

8BitDo SN30 Pro, SN30 Pro+, Pro2 all use the same style joystick caps with silicone rubber coating. If your caps are broken or worn out, this guide will walk you through the replacement. This guide helps with only the replacement of the stick caps, not the analog sticks.



## TOOLS:

- [T6 Torx Screwdriver](#) (1)
- [Tweezers](#) (1)



## PARTS:

- [8BitDo Replacement Analog Stick Cap](#) (1)

## Step 1 — Remove Battery



- Place the controller face down.
- Remove the battery cover.
- Remove rechargeable battery or AA batteries.

## Step 2 — Remove Trigger Buttons



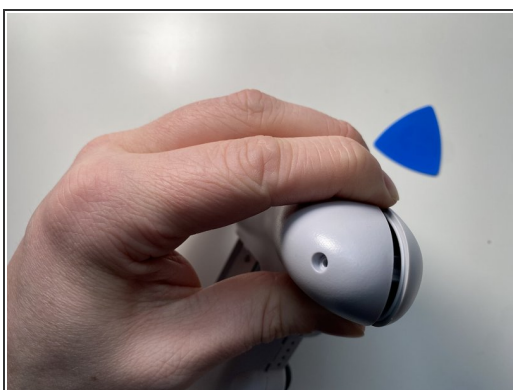
- Remove L2 and R2 trigger buttons by pushing them away from the grips.

### Step 3 — Remove Screws



- Use Tweezers to uncover two screws under the label in the battery compartment.
- Use a T6 screwdriver to remove the four 7.3 mm screws securing the rear cover.

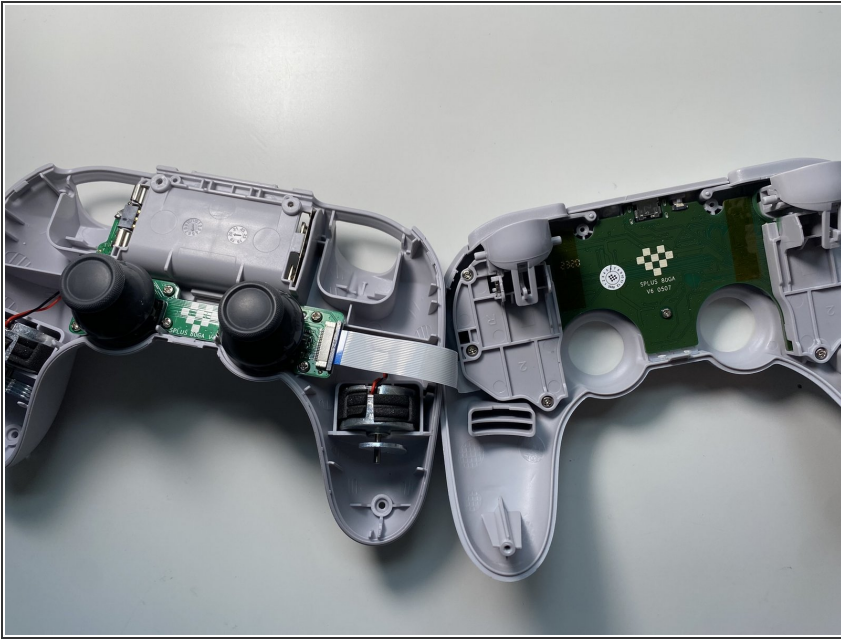
### Step 4 — Unclip Covers



- At the end of each grip, pry apart the covers.
- Use fingernail or opening pick to undo the two top clips.
  - One clip next to L button.
  - One clip next to R button
- Undo the final clip between the joysticks.



## Step 5 — Separate Covers



- Carefully move the rear cover away and from the front cover. Place it to the left.

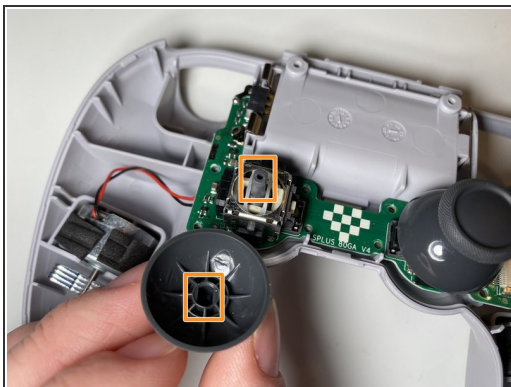
**⚠ Do not completely separate. The two halves are still attached via a white ribbon cable.**

## Step 6 — Remove Caps



- Grab the top and pull straight up on the joystick cap. Pulling out the caps one-by-one.

## Step 7 — Installing New Caps



- One at a time, Orient the new cap to match the analog stick.
- Push the cap straight down onto the analog stick.
  - You should hear the click of the stick button

To reassemble your device, follow these instructions in reverse order.