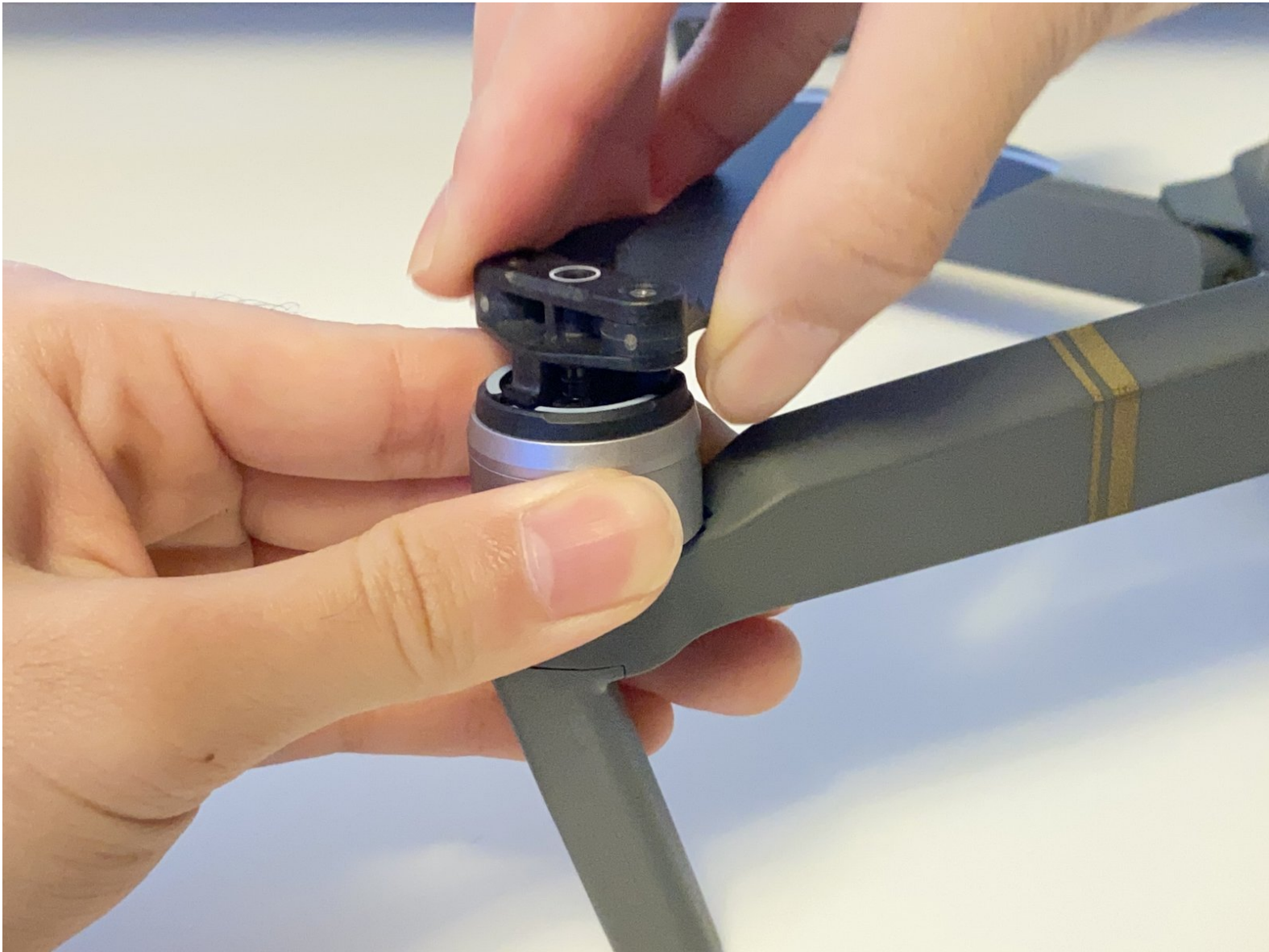




DJI Mavic Pro Propeller Replacement

A quick tutorial of how to replace your DJI Mavic Pro's propellers.

Written By: Sophia Maxine Villarosa



INTRODUCTION

Use this guide to replace a broken propeller of your DJI Mavic Pro Drone.

The propellers of a drone are very important. If the propellers are damaged, your flight may not be successful. Your propellers may need to be replaced if they crack or break when hit by an obstacle because broken propellers can affect the flight of the drone.

There are no tools required to replace the propellers of your drone, however you will need new propellers to replace the broken ones. Either you have bought the propellers separately or it has came with the drone.

Before beginning, make sure that your drone is powered off, do not replace the propellers when the drone is turned on.



PARTS:

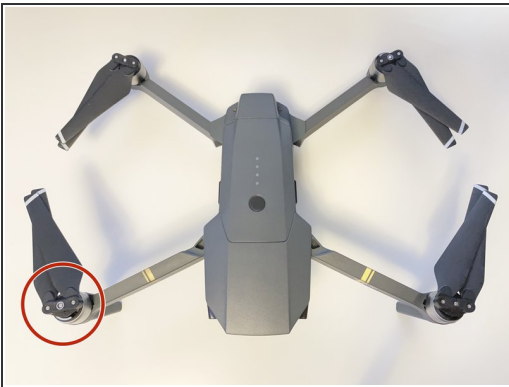
- [DJI Mavic Pro Folding Propellers](#) (4)
-

Step 1 — Propellers



- Unfold your DJI Mavic Pro Drone.


Step 2



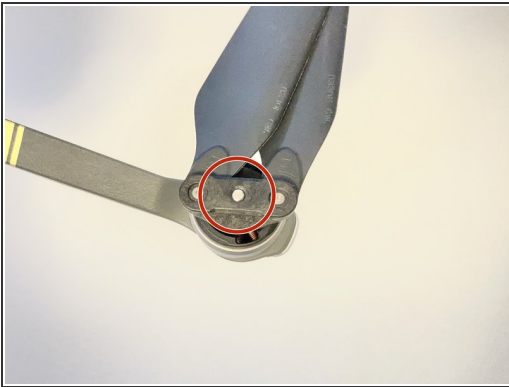
- Push down slightly on the propeller you want to remove.

Step 3



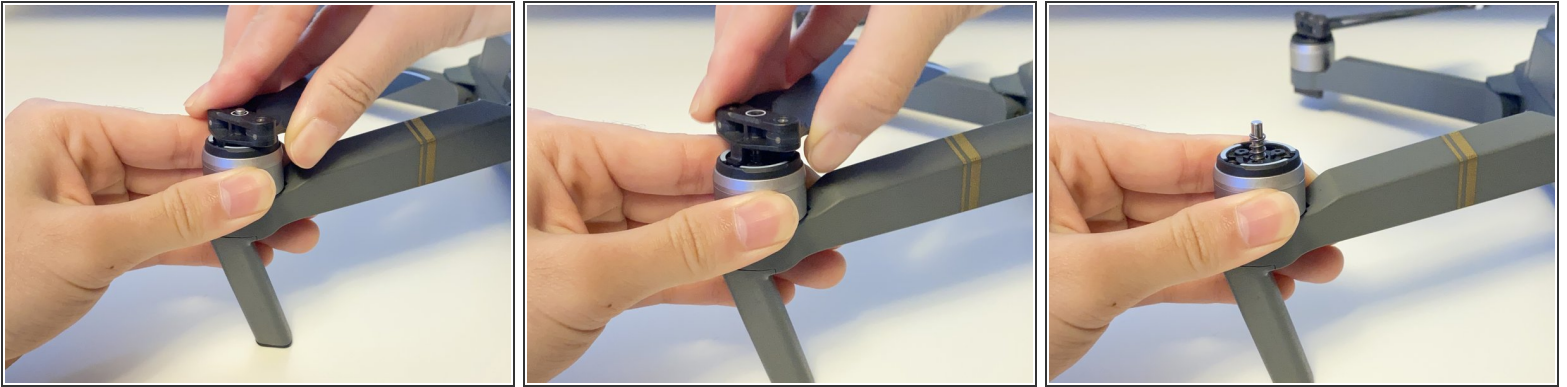
-  There are 2 types of propellers on a DJI Mavic Pro drone: 1 with a white circle outline (shown in the image) and 1 without.
- If the propeller you want to remove has a white outline like shown in the image, then turn the propeller **counterclockwise** to unlock its position.

Step 4



- If the propeller you want to remove **DOES NOT** have a white outline, then turn the propeller **clockwise** to unlock its position.

Step 5



- Pull up the propeller to remove it.

Step 6



☑ To replace the propellers, check to match the propellers with the arm of the drone.

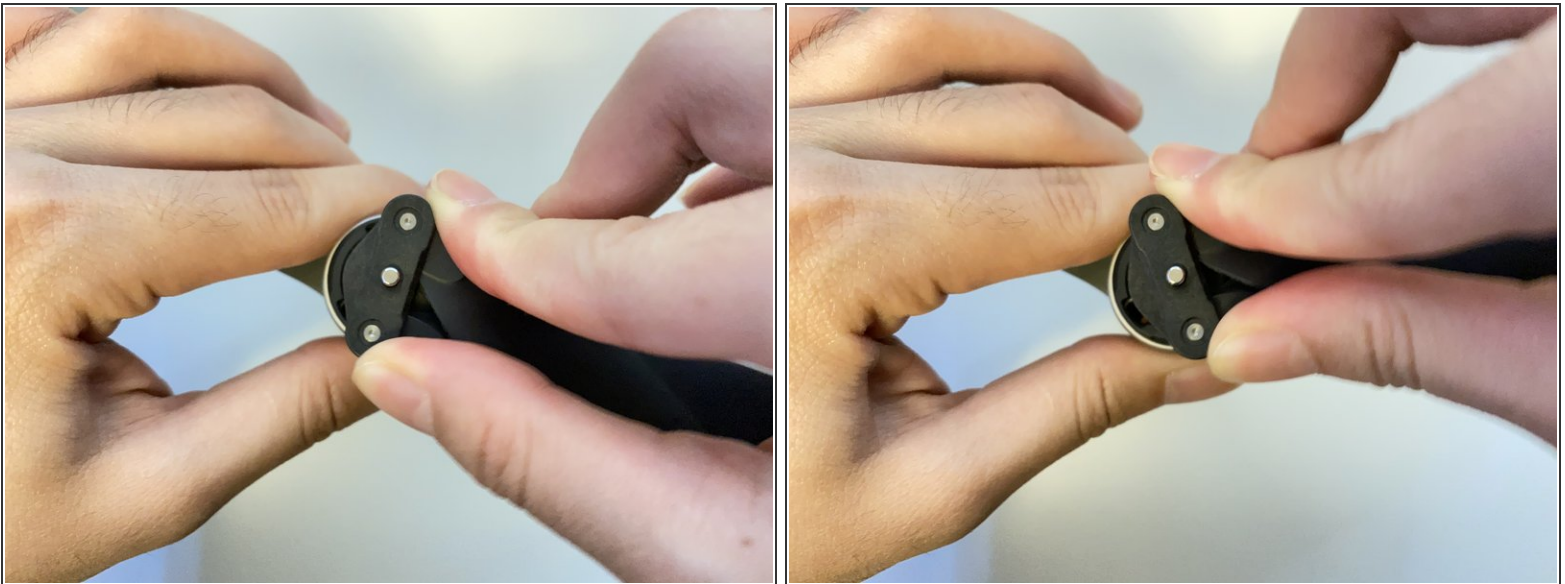
- The propeller with a white circle will have to be placed on the arm of the drone with a white outline and the propeller without the white circle will be placed on the arm of the drone without the white outline.

Step 7



- Align the parts outlined with red with the holes on the arm of the drone outlined by the red.
- Push the propeller down.

Step 8



- If the propeller has **NO** white mark (circle) then turn the propeller **counterclockwise** to lock its position.
- If the propeller has a white mark (circle) then turn the propeller **clockwise** to lock its position.

Step 9



- Check to see if the propeller is properly locked into place by slightly pulling it up.
- If it is locked, then you can safely fly your drone.