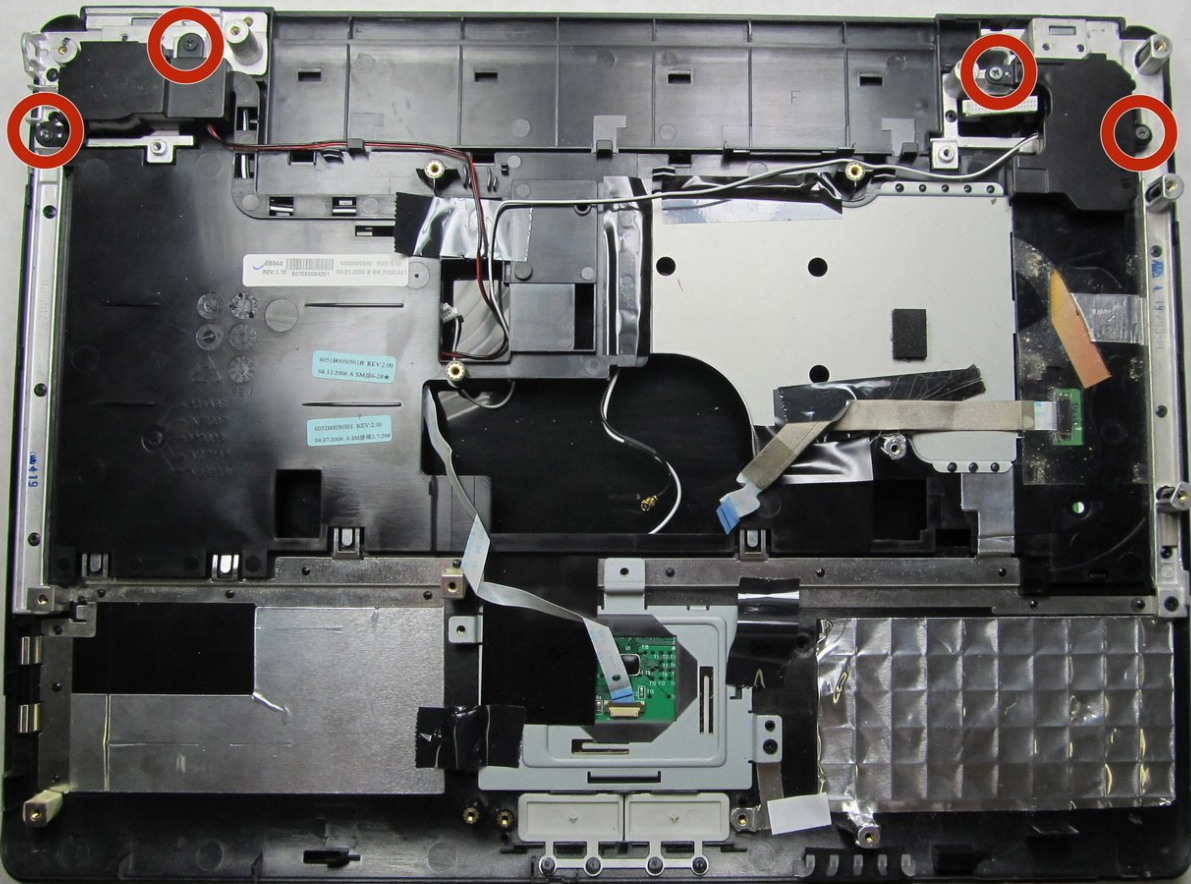




# Toshiba Satellite A105-S4011 Speakers Replacement

Install new speakers in your Toshiba A105.

Written By: Cara Sloth



---

## INTRODUCTION

This guide is relatively straight-forward as there are only few screws holding the speaker in place. The most difficult parts of this guide are the prerequisites; removing the keyboard, as well as separating the display from the motherboard.



### TOOLS:

- [Phillips #00 Screwdriver](#) (1)
  - [Phillips #1 Screwdriver](#) (1)
  - [iFixit Opening Tool](#) (1)
-

## Step 1 — Battery



- Turn the laptop over and locate the lock and battery release switches. Unlock the battery by changing the switch on the right from locked to unlocked by sliding the switch outward.

## Step 2



- Hold the release switch and pull out the battery towards you.



## Step 3 — Keyboard



**i** Make sure to turn off the laptop, unplug the device and/or remove any batteries.

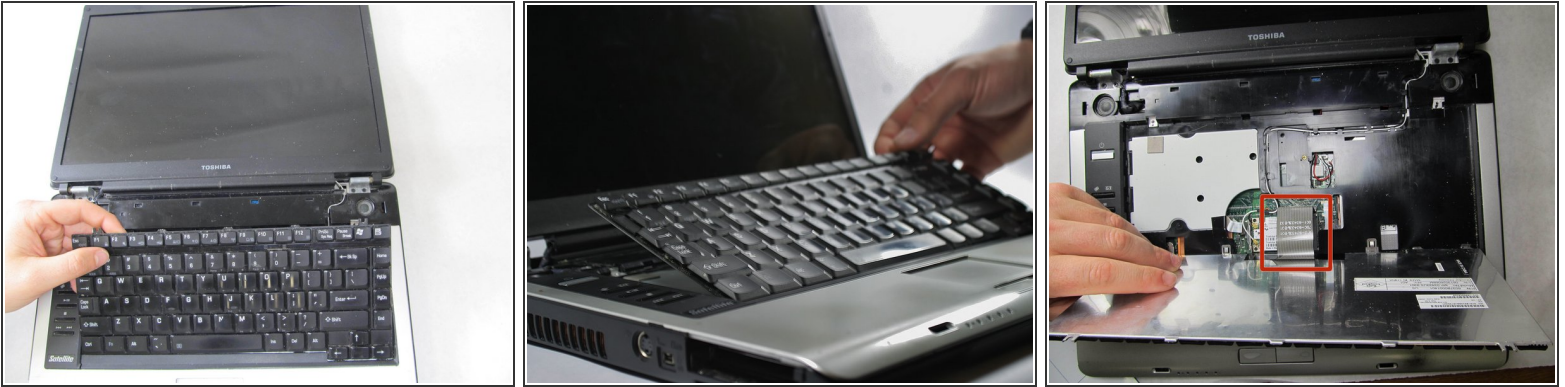
- Open the laptop so the display screen is bent fully back with the display facing upward, parallel to the surface you are working on.
- Wedge the Phillips 00 screwdriver above the F1 key, and separate the top piece of plastic from the body of the laptop. Don't worry about breaking it! You will need to forcefully wedge the screwdriver under the plastic, simultaneously pushing upward and forward.
- Once that section has popped up, work on pulling the rest of the plastic piece up and out, alternating from left to right.

## Step 4



- Completely remove the plastic piece from the body of the laptop.
- Using the Phillips 1 screwdriver, unscrew the two 3mm screws located at the top corners of the keyboard. (See the second picture for additional clarification.)

## Step 5



- Without yanking, lift the keyboard up carefully.
- Now that the board is free, cautiously undo and pull free the ribbon that connects the keyboard to the body of the laptop.

## Step 6 — Display



- Turn the laptop over, so that you are now looking at the bottom of the laptop.
- Using the Phillips #1 screwdriver remove the fourteen 6mm screws.
- Using the Phillips #1 screwdriver remove the three 4mm screws.

**⚠ Before beginning this guide, make sure you have disconnected the seven wires described in step 4 of the keyboard guide (the guide that proceeds this one).**

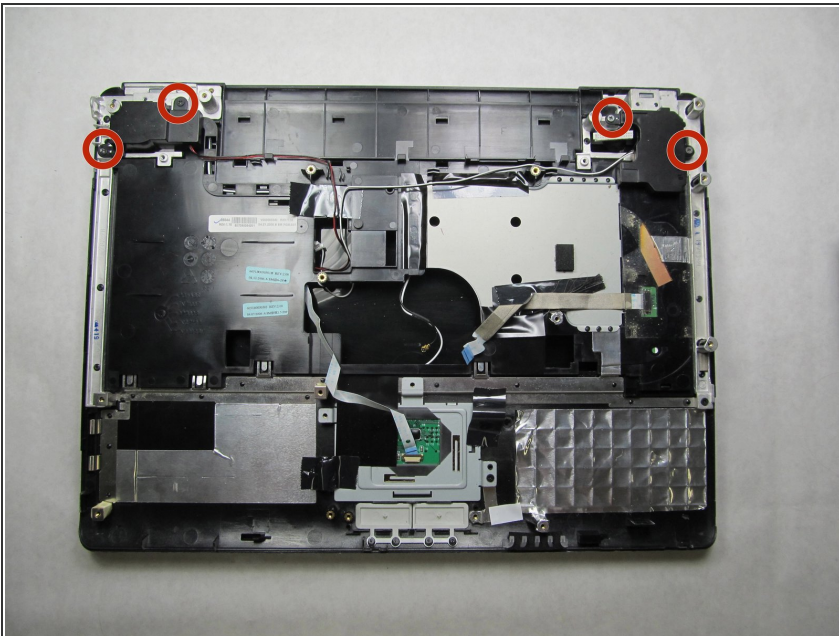


## Step 7



- Completely remove the display piece by pulling between the silver display-component and the black bottom-component. The display-component is an all-in-one component pictured here.
- ❗ You may need to use the plastic opening tool to pry the two sections apart
- ❗ Manufacturer sells the display piece, pictured here, as a complete piece for replacement purposes.

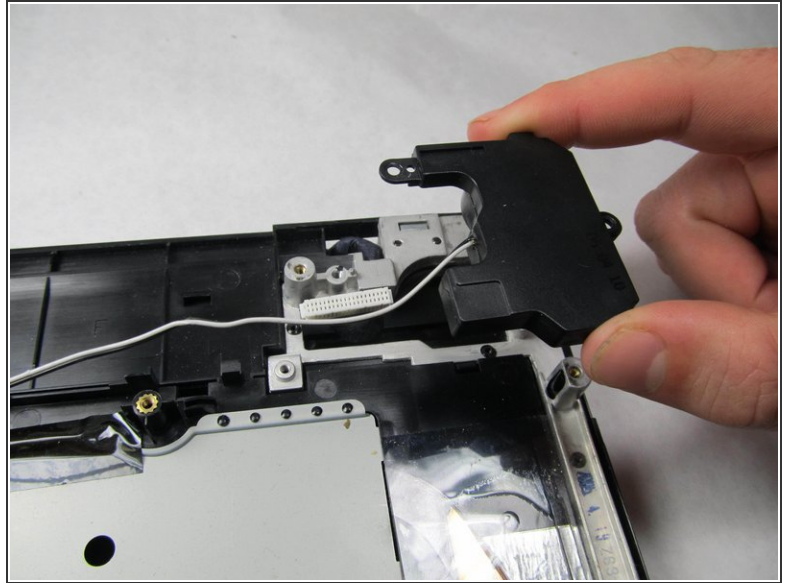
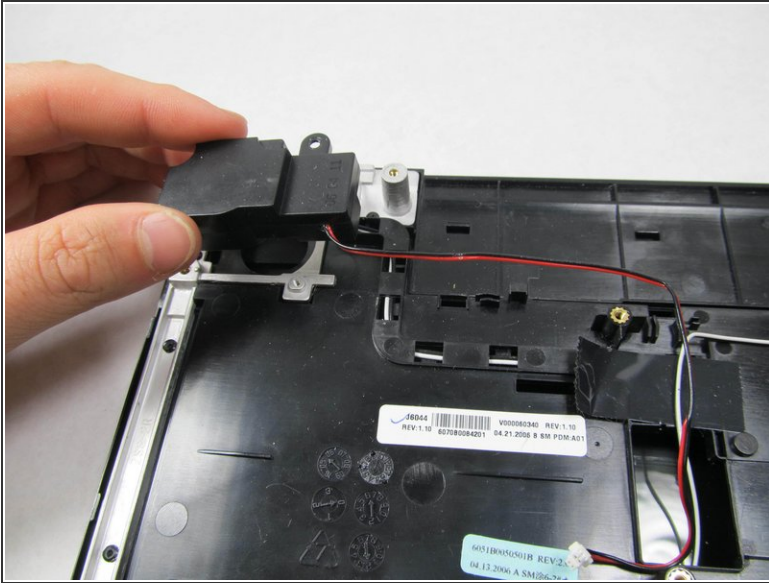
## Step 8 — Speakers



- On the top half of the disassembled laptop (the part that is connected to the display) use the #1 Phillips

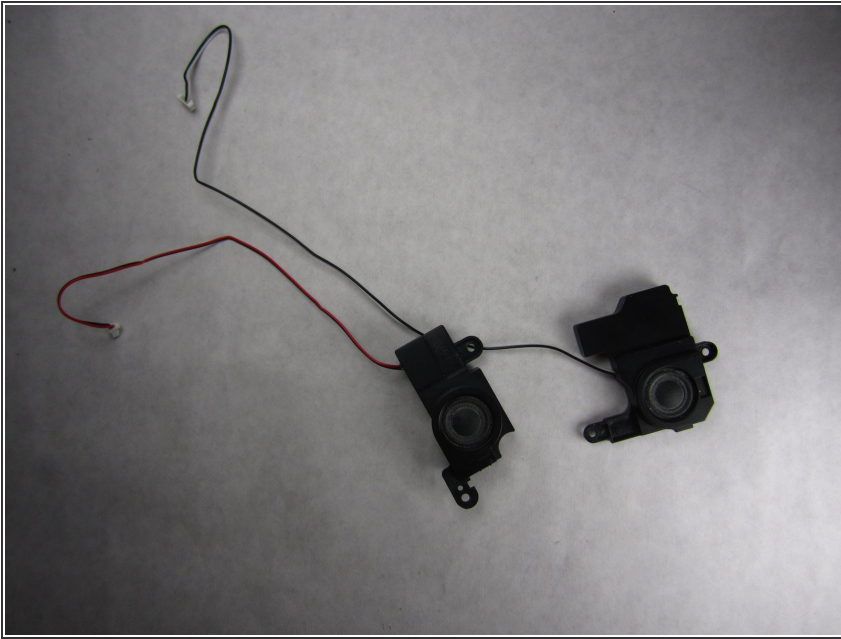
Screw Driver to remove the four 5mm screws holding the speakers in place.

## Step 9



- Once the screws have been removed, simply lift the two individual speakers out of their positions.
- ❗ The wires that connect the speakers to the rest of the components should have been disconnected when taking the top case off.

## Step 10



- Once the speaker wires have been disconnected, the screws unscrewed, and the speakers removed you should be left with these two components.
- ★ Reminder: Do not confuse the two speakers. The red wire of one speaker means it is the positive receiver and the black wire means it is the negative receiver.

To reassemble your device, follow these instructions in reverse order.