



How to Fix an Analog Stick Drift in an Xbox One Elite Series 2 Controller

Does the analog stick of your Elite Series 2...

Written By: Aliyah Castaneda



INTRODUCTION

Does the analog stick of your Elite Series 2 (model 1797) Xbox controller drift onscreen without you moving it? If so, it probably has what is called “analog stick drift.”

There are multiple causes of stick drift. Sometimes it can be caused by damage—like dropping it—for example. Other times it can be caused by normal wear and tear. Fortunately, a lot of the time, it is simply caused by a buildup of debris in the sensor.

This easy-to-follow guide requires no special skills, and will take you through the process of fixing it.



TOOLS:

- [iFixit Opening Picks \(Set of 6\)](#) (1)
- [Compressed Air](#) (1)
- [Spudger](#) (1)
- [iFixit Opening Tool](#) (1)



PARTS:

- [Xbox One Elite Controller Series 2 Joystick](#) (1)

Step 1 — How to Fix an Analog Stick Drift in an Xbox One Elite Series 2 Controller



- Place a prying tool in the crease of the right side of the controller.
- Slide the prying tool until the controller begins to pop open.

Step 2




- Insert an opening pick into the space to keep the controller from snapping shut.

Step 3



- Continue to use the prying tool down the side of the controller.

 The bottom right handle will pop open.

Step 4



- Slide the prying tool along the crease of the bottom of the controller.

Step 5



- Place the prying tool in the crease of the left side of the controller.
- Slide the prying tool until the controller begins to pop open.

Step 6



- Insert an opening pick into the space to keep the controller from snapping shut.

Step 7



- Continue to slide the prying tool in the crease of the controller.
- ⓘ The bottom handle will pop open.

Step 8



- Place the prying tool into the space at the top of the controller.
- Slide the prying tool until the entire top half of the controller is loose.

Step 9



- Remove the top half of the controller.

Step 10



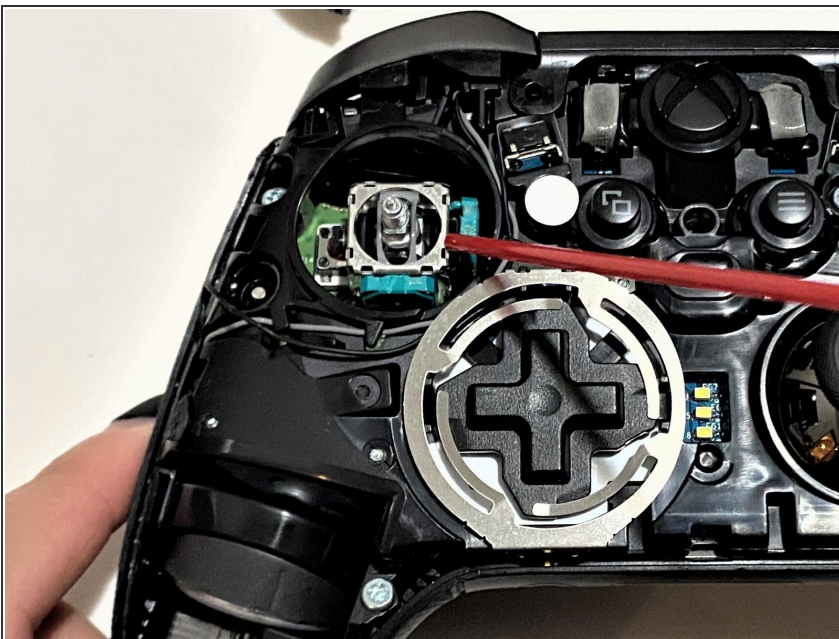
- Twist the analog stick counterclockwise until it comes off.

Step 11



- Use a spudger to open the sensor.

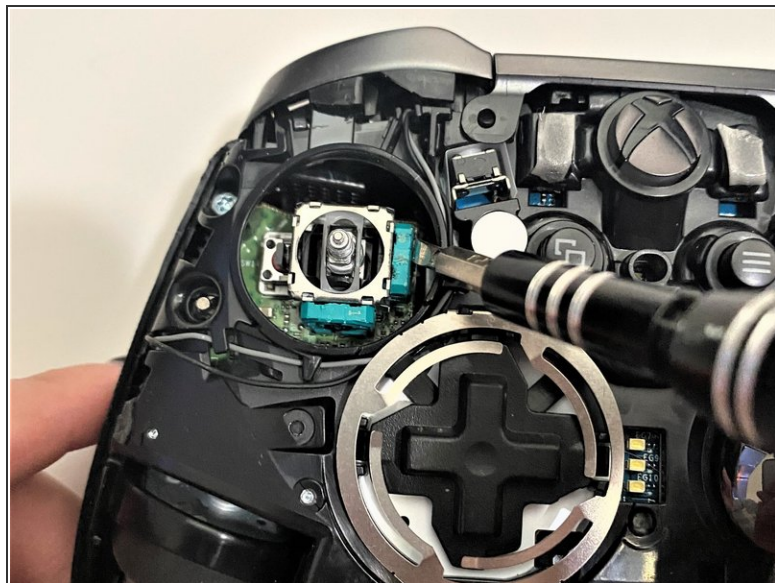
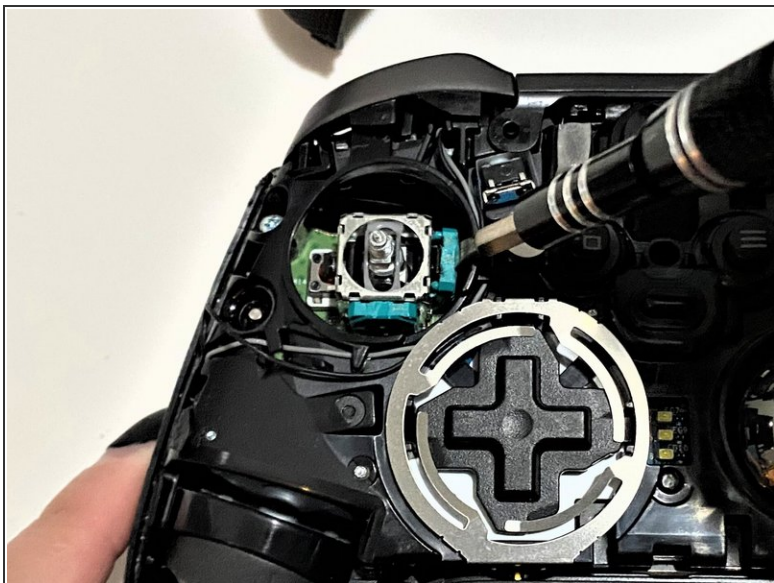
Step 12



- Place the tip of the straw from the can of compressed air into space near the sensor.
- Spray the can of compressed air until the sensor is free of debris.

⚠ Do not get the liquid from the can of compressed air into the sensor or anywhere in the controller.

Step 13



- Use a spudger to close the sensor.

Step 14



- Replace the analog stick, and twist to the right until it tightens.

Step 15



- Place the top half of the controller back onto the bottom half.
- Push on the bottom, top, and sides until they snap together.