



# Dell Latitude 3190 Keyboard Replacement

The keyboard is the main source of...

Written By: Haley Smith



# INTRODUCTION

The keyboard is the main source of communication between the user and the laptop. Without it, the laptop has very limited capability. Before replacing your keyboard, attempt to clean under the keys with a can of air and a microfiber cloth. If your Dell Latitude 3190 keyboard has missing or broke keys or has stopped functioning altogether, follow this guide to replace the keyboard. Make sure your device is powered off and unplugged from external power before beginning the repair.

## TOOLS:

Spudger (1)

Phillips #0 Screwdriver (1)

iFixit Opening Tool (1)

## Step 1 — Base Cover



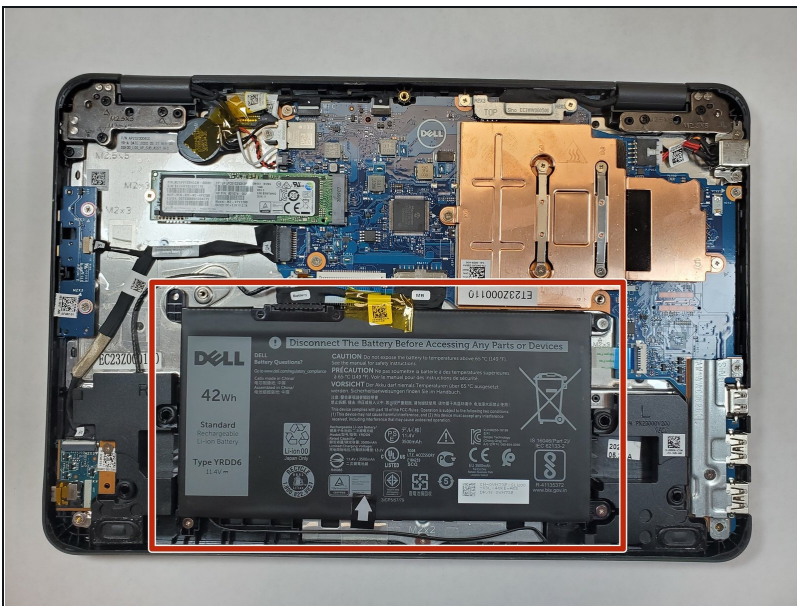
- Use a Phillips #0 screwdriver to remove the seven 7 mm screws securing the back case.

## Step 2



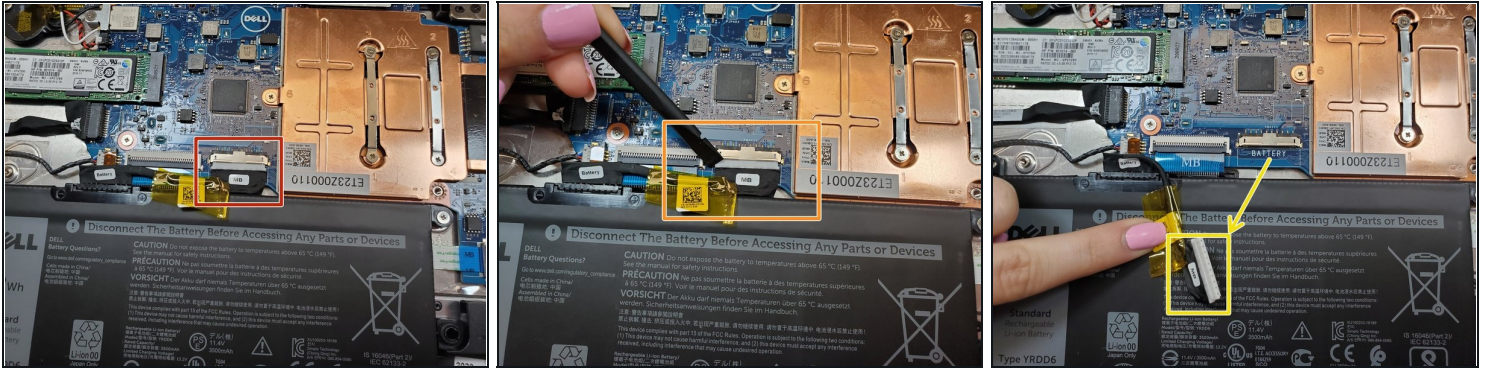
- Using a plastic opening tool carefully separate the plastic base cover from the rest of the laptop.
- Lift the bottom cover from the laptop.

## Step 3 — Battery



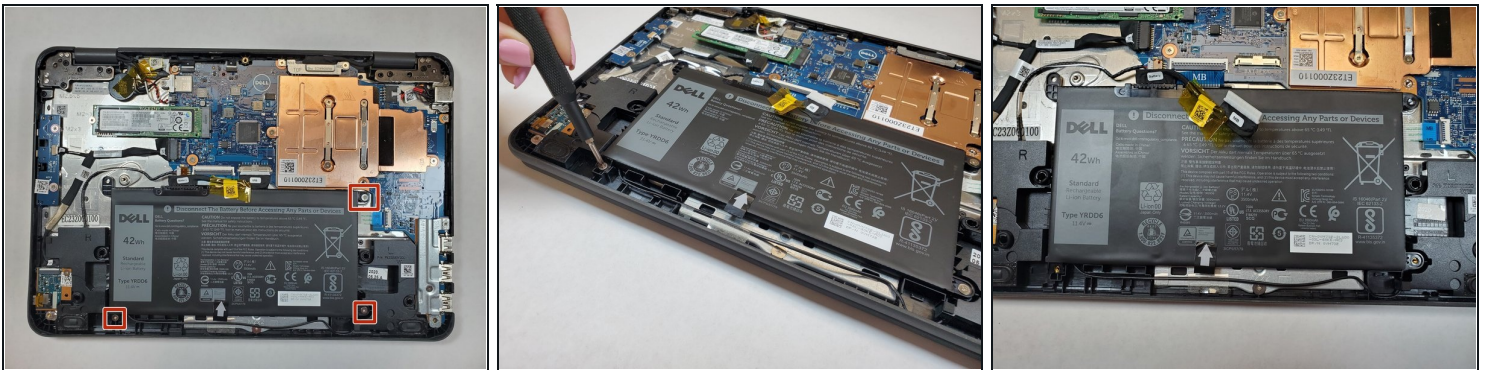
- Locate the battery.

## Step 4



- Disconnect the battery cable located on the top of the battery.
- Use the spudger and disconnect the battery cable.
- Pull the cable out of the way.

## Step 5



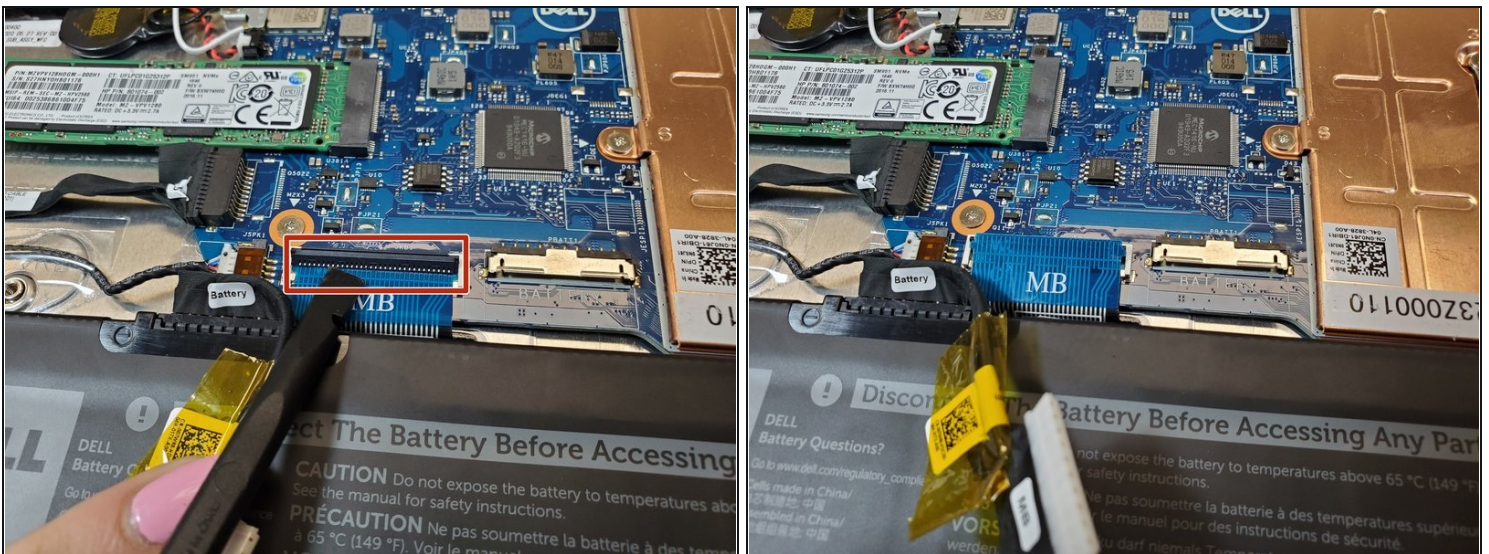
- Use a Phillips #0 screwdriver to remove the three 3 mm screws from the battery.

## Step 6



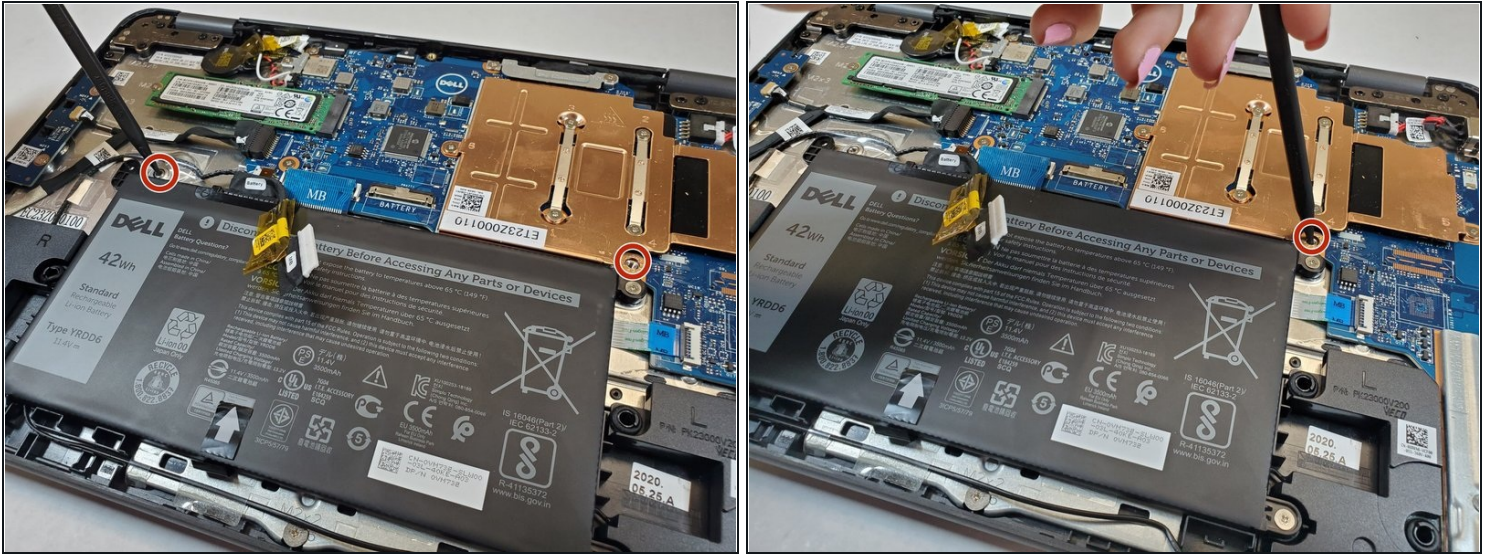
- Pull the black battery tap upwards to remove the battery.
- ⓘ The battery adhesive is strong, do not be afraid to use force. You may need to use the spudger or opening tool as a wedge.

## Step 7 — Keyboard



- Use the spudger to release the small black tab locking down the connector by lightly pushing up on it.
- Disconnect the keyboard cable from the connector on the system board.

## Step 8



- Hold down the laptop securely while pushing into the two release holes using a spudger.

ⓘ You may need to push harder than you think, you will feel it release.

## Step 9



- Turn the laptop over, so the keyboard is facing up
- Pry the bottom of the keyboard using a spudger to the release the keyboard.
- Slide the keyboard outwards, away from the computer, and lift the keyboard away from the computer.

To reassemble your device, follow these instructions in reverse order.

