



# Huawei Mate 10 lite battery replacement

Replacing the battery of a Huawei Mate 10 lite

Written By: Maximilian Deisz



## INTRODUCTION

This guide shows you how to replace the lithium-ion-battery of your Mate 10 lite.

You have to take [appropriate security measures](#) if the battery is swollen. For your own security you should drain the battery to 25% as that reduces the risk of fire if you damage the battery during repair.

The backcover is not glued so it can be opened easily.



### TOOLS:

- [iFixit Opening Picks \(Set of 6\)](#) (1)
- [iFixit Opening Tool](#) (1)
- [Phillips #00 Screwdriver](#) (1)
- [T2 Torx Screwdriver](#) (1)
- [Spudger](#) (1)
- [Plastic Cards](#) (1)
- [iFixit Adhesive Remover \(for Battery, Screen, and Glass Adhesive\)](#) (1)

*Empfohlen aber nicht benötigt*



### PARTS:

- [New Item](#) (1)

## Step 1 — Remove SIM card



- Remove the SIM card by using a paperclip or a special tool and inserting it into the hole next to the SIM card tray until it pops out.

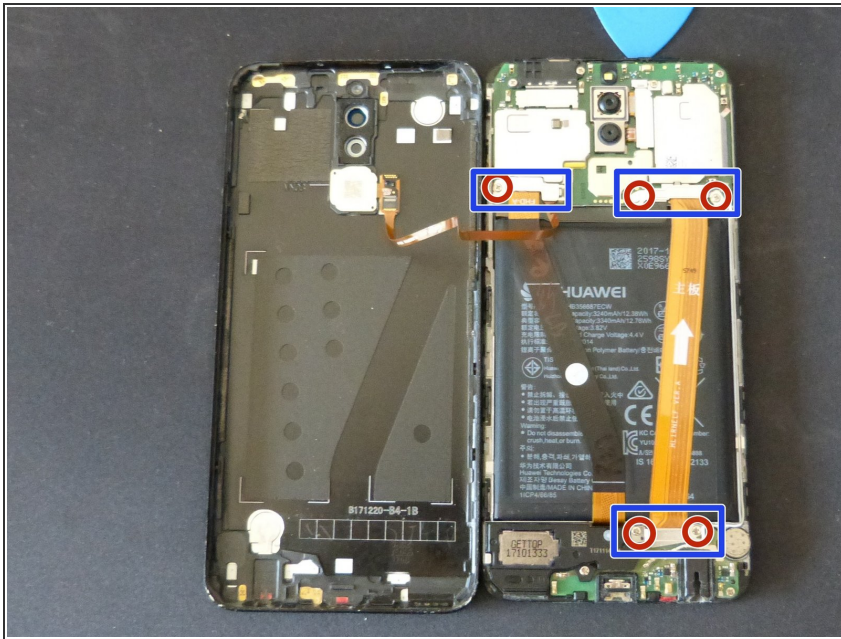
## Step 2 — Open the case



- Remove the Torx T2 screws on the bottom of the case(next to the USB port)
- Use the Opening tool on the bottom of the case and pry it open
- go around the side to open the phone
- place the device screen down and take the backcover off to the left side

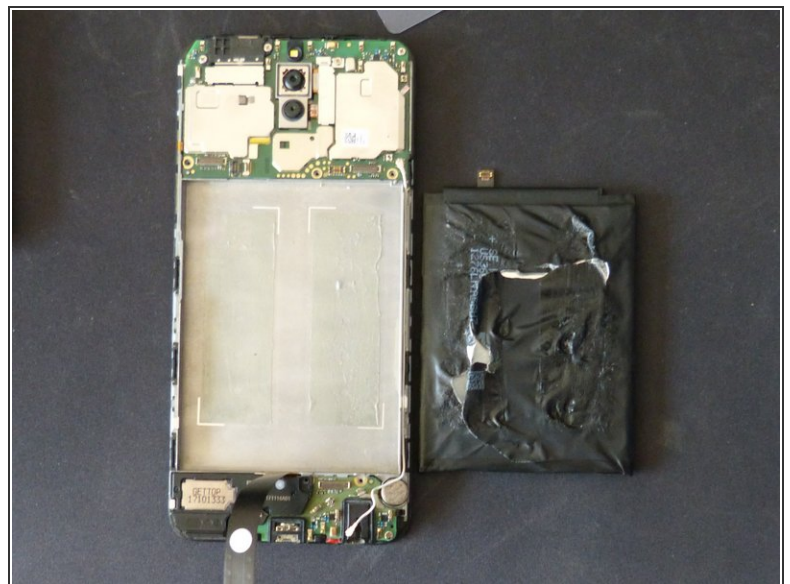


### Step 3 — Remove the cables



- Red: Phillips #00 screws
- Blue: Remove the cable clamps with the Spudger
- Remove the cables connecting to the backside and remove the cables that run over the battery

### Step 4 — Remove the battery



- Insert the plastic card into the side and push them under the battery
- the glue under the battery can be removed with highgrade IPA or a special glue remover. Otherwise you can pry the battery out with the spudger, the plastic cards and the opening picks

Follow the guide in the opposite direction and use the replacement battery.