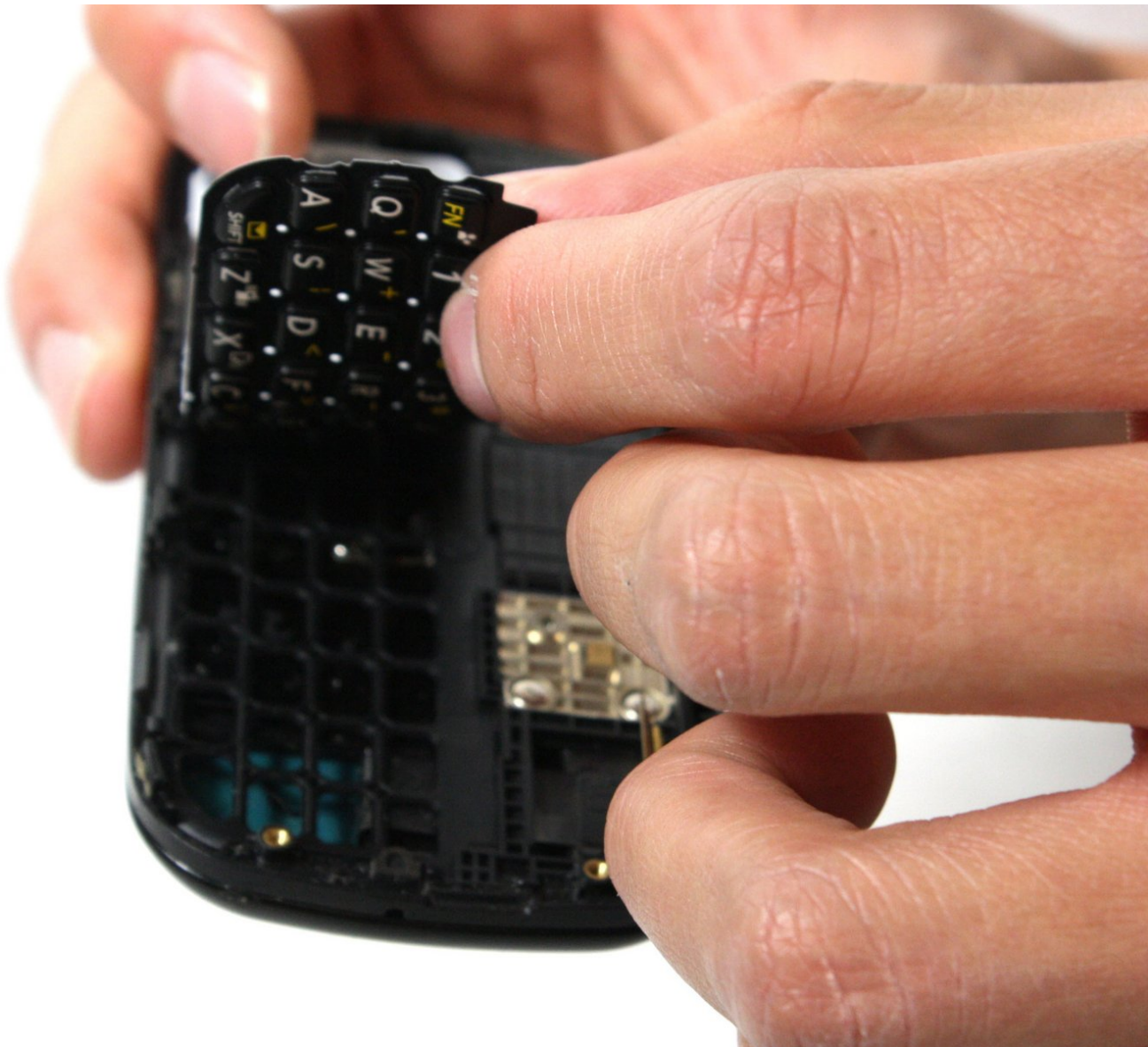




LG Cosmos Silicon Keypad Replacement

This guide provides step by step instructions on how to replace the silicon keypad.

Written By: Johnny Phane



INTRODUCTION

If the QWERTY silicon keypad is worn out or damaged, it is replaceable. It requires time and a lot of disassembling.



TOOLS:

- [Phillips #000 Screwdriver](#) (1)
- [iFixit Opening Tools](#) (1)



PARTS:

- [LG Cosmos VN250 QWERTY Keypad](#) (1)

Step 1 — Battery



- Apply an upward force to slide the back cover off.

Step 2



- Use your finger to push down on the top of the battery and pull it out.

Step 3 — Rear Case



- Remove the five 3.0mm Phillips #000 screws along the edge of the rear case.

Step 4



- Use a plastic opening tool to pry the rear case loose.

Step 5



- Once the rear case is loose, lift it from the rest of the phone.

Step 6 — Motherboard



- Remove the two 2.9 mm Phillips #000 screws that are slightly off-centered to the right.

Step 7



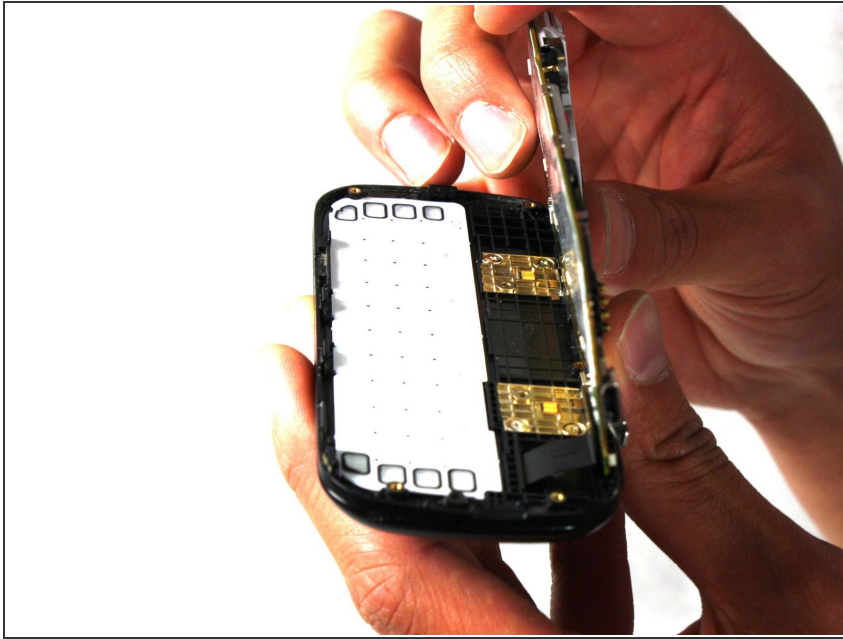
- Use the plastic opening tool to pry the motherboard loose.

Step 8



- Hold the motherboard from the top and bottom and slowly lift the motherboard until you feel a pull.
- ⚠ The flex cable is attached at the bottom of the motherboard and can be damaged if too much lifting force is applied.

Step 9



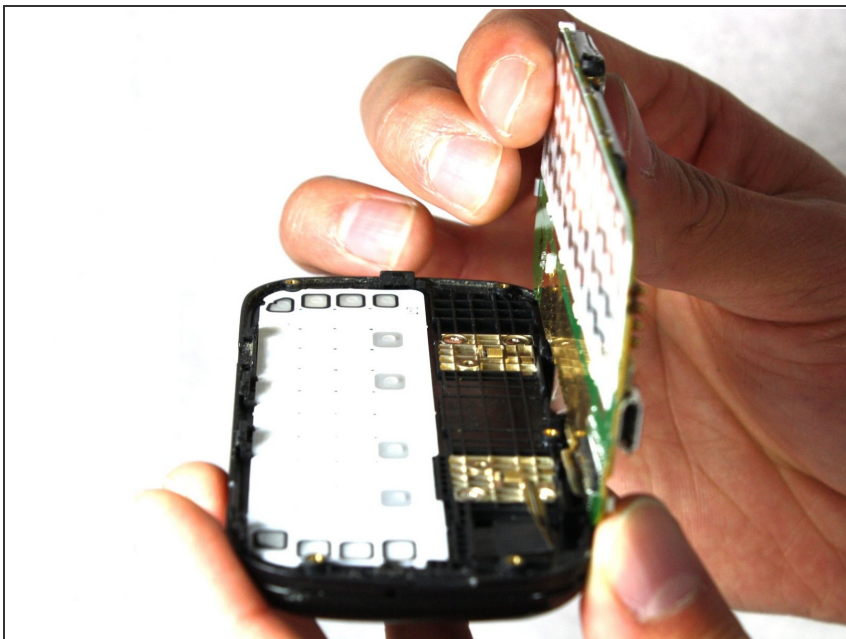
- Once the motherboard is lifted , rotate the motherboard up 90 degrees to the right.

Step 10



- Use your finger to pull the flex cable out from its connector.

Step 11



- Pull the motherboard away from the rest of the phone.

Step 12 — Silicon Keypad



- Lift the silicon keypad away from the rest of the phone.

To reassemble your device, follow these instructions in reverse order.