



# Samsung Galaxy A51 Screen with Frame Replacement

Galaxy A51 broken screen replacement

Written By: ZFix



---

## INTRODUCTION

Samsung Galaxy A51 - how to disassemble the device and change broken screen

[video: <https://youtu.be/03Y1wPInghM>]



### TOOLS:

- [Plastic Cards](#) (1)
  - [Phillips #0 Screwdriver](#) (1)
  - [Tweezers](#) (1)
  - [Heavy-Duty Suction Cups \(Pair\)](#) (1)
  - [Spudger](#) (1)
-

## Step 1 — Samsung Galaxy A51 Screen with Frame



- Samsung Galaxy A51 - the new spare part.

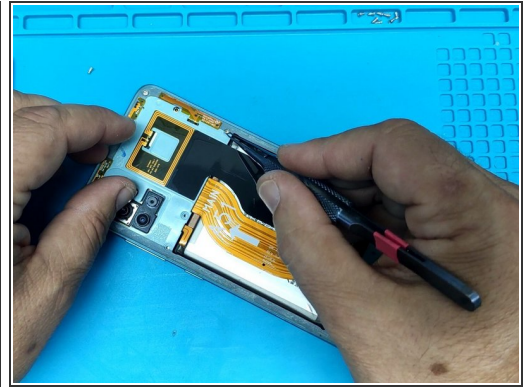
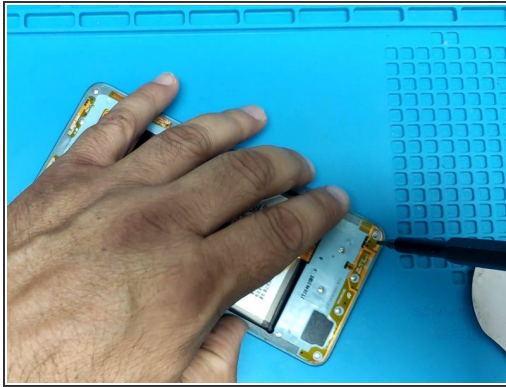
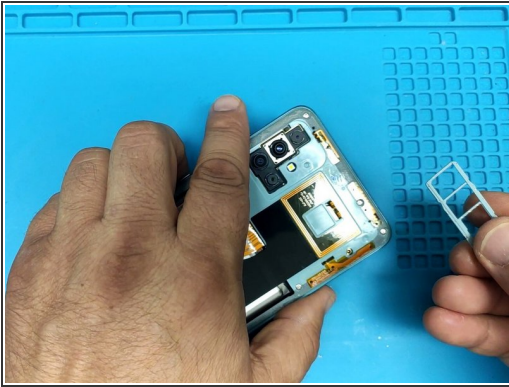
## Step 2 — Back Cover



- Warm up the device to soften the adhesive.
- Use suction cup and plastic tools (playing cards) to separate the back cover.

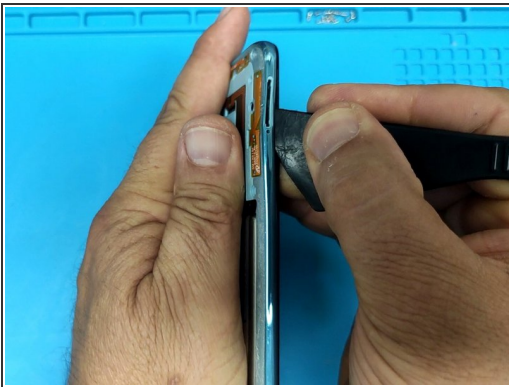


### Step 3 — SIM Tray and screws



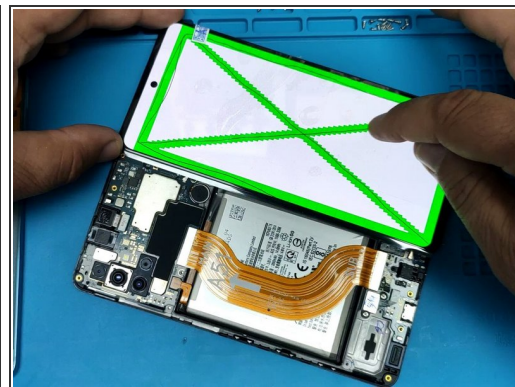
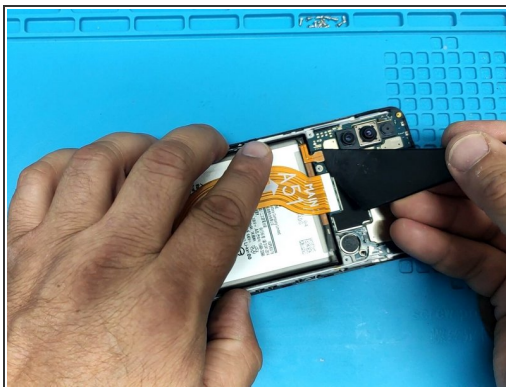
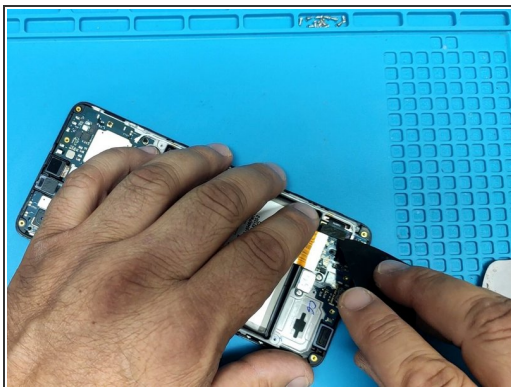
- Remove the SIM Tray.
- Remove 13x Phillips screws.

### Step 4 — Middle Frame removal



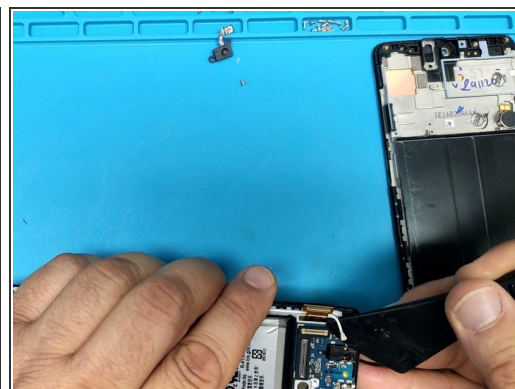
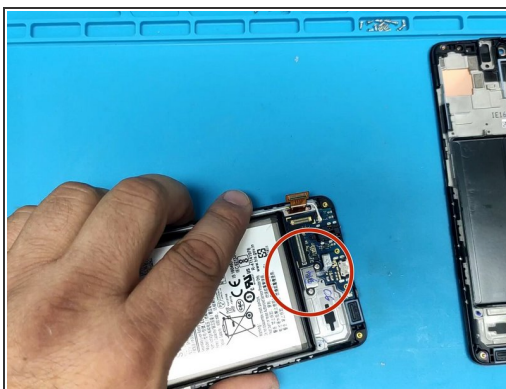
- Only use plastic tools to separate the metal frame.

## Step 5 — Test the new spare part



- Test the new spare part.

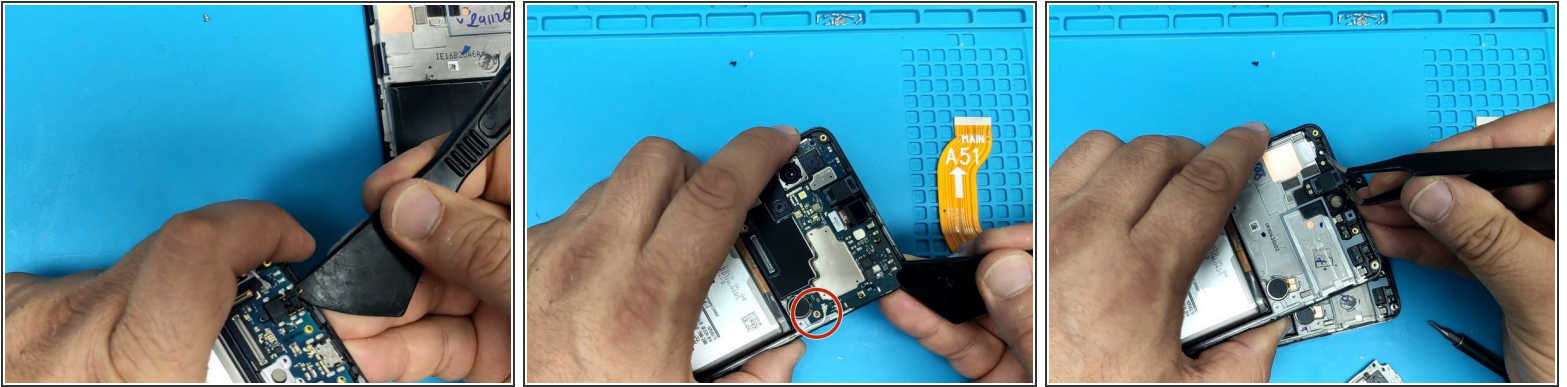
## Step 6



- Disconnect and remove the main flex cable.
- To remove the fingerprint sensor - remove two Philips screws and disconnect the flex cable.
- Disconnect coaxial antenna cable.



## Step 7



- Remove the Sub -board? Charging board.
- The motherboard is secured by one small black screw, remove it to separate the board.
- Don't forget to transfer the receiver.

To reassemble your device, follow these instructions in reverse order.